

Targus Antimicrobial Protection is a protective finish creating a cleaner surface. Unlike typically applied sprays, it works continuously to protect the device by preventing the growth of microorganisms. Keep your presenter safer with Targus Antimicrobial Protection.

**Antimicrobial product protection is limited to the device itself.

This presenter has been infused with an antimicrobial additive. Active ingredient: Silver Phosphate Glass (nano-).

EPA Est. 99234-CA-1

La protection antimicrobienne Targus est un fini protecteur permettant de créer une surface plus propre. Contrairement aux sprays généralement appliqués sur la surface des produits, elle agit en continu pour protéger l'appareil et empêcher la croissance de micro-organismes. Protégez votre télécommande de présentation grâce à la protection antimicrobienne Targus.

**La protection antimicrobienne du produit est limitée à l'appareil lui-même.

Cette télécommande de présentation a été infusée avec un additif antimicrobien. Ingrédient actif : Verre de phosphate d'argent (nano-).

EPA Est/ 99234-CA-1

La protección antimicrobiana de Targus es un acabado protector que crea una superficie más limpia. A diferencia de los aerosoles aplicados a nivel tópico, este tipo de protección funciona constantemente para proteger el dispositivo evitando la proliferación de microorganismos. Mantén tu puntero inalámbrico más seguro con la protección antimicrobiana de Targus.

**La protección antimicrobiana se limita al propio dispositivo.

Este puntero inalámbrico ha sido tratado con un aditivo antimicrobiano. Principio activo: vidrio de fosfato de plata (nano-).

EPA Est. 99234-CA-1



AMP068 FCC ID : OXM000135
AMP068R FCC ID : OXM000136

AMP068 IC : 27357-00004
AMP068R IC : 27357-00005

Targus®

CONTROL MAX PRESENTER REMOTE

User Guide

Model (型號/型号) : AMP068

(Product Name / 產品名稱 / 产品名称: Wireless Presenter / 無線簡報器 / 无线简报器)
AMP068R

(Product Name / 產品名稱 / 产品名称: Wireless Receiver / 無線接收器 / 无线接收器)
SKU : AMP06804AMGL

folding line
2 staples here (saddle stitching)

Diecut

Color: Grayscale

Material: 80gsm woodfree paper

Folded Size: 4" W x 6" H

Open size: 8" W x 6" H

410-4185-001A / AMP06804AMGL



EN - Introduction

Thank you for your purchase of the Targus Control Max Presenter Remote. It offers true plug-and-play capability with no need for software drivers and the 2.4 GHz technology allows for effective presentations at up to 66/20m.

Contents

- Control Max Presenter Remote
- USB-A Stowable Dongle
- 2 x AAA battery
- User Guide

System Requirements

Hardware

- USB-A interface

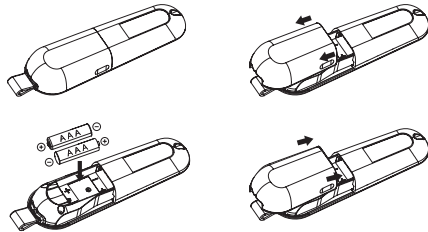
Operating System

- Windows® 10
- macOS®
- Chrome OS™ (Chrome Slider only)

"App/Programme functionality may vary, please check with your software provider"


Installing the Battery

1. Open the battery cover at the bottom of the presenter.
2. Insert the supplied battery, making sure the positive (+) and negative (-) ends of the battery match the polarity indicators inside the battery compartment.
3. The White LED will light for 3 seconds twice after correct battery installation.
4. The Red LED will flash until power off when the battery is low. Please replace battery.




CAUTION : risk of explosion if the battery is replaced by an incorrect type.

Establishing connection by 2.4G mode


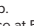
1. Plug the USB-A receiver into any USB-A port on your laptop.
2. The presenter will connect laptop automatically, you can see the logo  at LCD screen bottom once 2.4G connection successfully. Please follow step 3 if 2.4G mode is not working.
3. Depress "Laser Button + Play PTT Button" for 3 seconds. The White LED will flash during pairing.

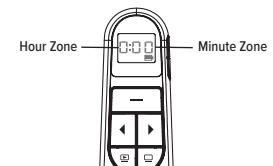
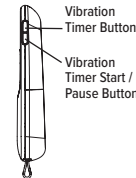


Establishing connection by Bluetooth

1. Enable the Bluetooth setting on your laptop/computer device.
2. Depress "Laser Button + Back Screen Button" for 3 seconds. The White LED will flash for 3 mins during pairing.
3. While the White LED is flashing, go to your laptop/computer Bluetooth setting and select "Targus P068" Bluetooth device name.
4. The Bluetooth presenter is now connected to your laptop/computer and the White LED turns off, you can see the logo  at LCD screen bottom once Bluetooth connection successfully.
5. If the pairing process takes longer than 3 minutes and the White LED turns off, reinstall battery and follow step 2.

Establishing Vibration Timer

1. Click Vibration Timer Button once, the Hour Zone number 0 will flash to wait for setting, click Forward or Backward Button to increase or decrease your target number from minimum 0 to maximum 9 hours.
2. Click Vibration Timer Button twice, the Minute Zone number 00 will flash to wait for setting, click Forward or Backward Button to increase or decrease your target number from minimum 00 to maximum 59 minutes.
3. Click Vibration Timer Button thrice, quit Vibration Timer Setting Mode. It will go to step 1 once you click the button.
4. Hold pressing Vibration Timer Button 3 second, timer will be clear.
5. Click Vibration Timer Start / Pause Button once, start timer when timer setting available and you can see play logo  at LCD screen top.
6. Click Vibration Timer Start / Pause Button twice, pause timer when timer setting available and you can see pause logo  at LCD screen top.
7. Presenter will vibrate once when timer balance at 5 minutes and 3 minutes, presenter will vibrate twice when timer balance 0 minute.



Power Saving Mode

In order to conserve power and increase battery life time, the presenter will enter power saving mode automatically after 5 minutes while presenter is motionless. Click on any button to resume to normal operation, the presenter may take a few seconds to reconnect with your laptop/computer.

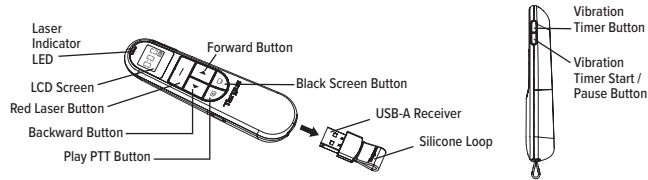
Reconnecting the laptop/computer device

The presenter will automatically attempt to reconnect to the most recent device whenever 2.4G mode or Bluetooth mode when power on or awoken.

Troubleshooting (Bluetooth connection)

- Make sure your presenter power is on.
- Make sure your laptop/computer device Bluetooth is working properly.
- Power indicator light flashing red indicates low battery.
- If your laptop/computer is connected to other Bluetooth devices, you may need to disconnect some devices before you can connect the presenter.
- If the presenter is still not connecting to your laptop/computer device and you see several "Targus P068" on Bluetooth device list, you may need to remove all "Targus P068", then hold the combo button "Laser Button + Back Screen Button" for 3 seconds to make a new device Bluetooth pairing connection.
- If the presenter is still not recognized, make sure the correct version of software is installed. Verify the Windows and Mac OS version for compatibility.

Keys and Functions



	Single Button / Combo Button	Operation	Function Description
1	Laser Button	Long press button less than 120 sec. Long press button over 120 sec.	Show red laser point Stop to show red laser point
2	Forward Button	1. Short press during play PTT Mode 2. Short press during Vibration Timer Setting Mode 3. Long press during Vibration Timer Setting Mode	Forward page Adding 1 hour at Hour Zone or adding 1 min at Minute Zone Continuous adding 1 hour until to 9 hours at Hour Zone or continuous adding 1 minute until 59 minutes at Minute Zone
3	Backward Button	1. Short press during play PTT Mode 2. Short press during Timer Setting Mode 3. Long press during Timer Setting Mode	Backward page Decreasing 1 hour at Hour Zone or decreasing 1 minute at Minute Zone Continuous decreasing 1 hour until to 0 hour at Hour Zone or continuous decreasing 1 minute until 0 minute at Minute Zone
4	Laser Button + Play PTT Button	Long press Laser Button + Play PTT 3 sec.	2.4G Wireless Mode pairing or re-pairing
5	Laser Button + Black Screen Button	Long press Laser Button + Black Screen Button 3 sec.	Bluetooth Wireless Mode pairing or re-pairing
6	Play PTT Button	Short press	Play PTT / end PTT
7	Black Screen Button	Short press	Black screen / resume screen during play PTT
8	Vibration Timer Button	1. Short press first time 2. Short press second times 3. Short press third times 4. Long press 3 sec.	Enter Vibration Timer Setting Mode at Hour Zone Enter Vibration Timer Setting Mode at Minute Zone Quit Vibration Timer Setting Mode Clear Vibration Timer Setting and quit Vibration Timer Setting Mode
9	Vibration Timer Start / Pause Button	1. Short press first time 2. Short press second times	Start Vibration Timer Pause Vibration Timer

Safety Measures

- Keep the presenter away from young children.
- Any attempt to disassemble, adjust or repair the presenter may result in exposure to the safety hazards.

Troubleshooting

What do I do if the response time of the presenter is slow or it intermittently stops working?

- Make sure that the presenter is within 66 feet (20 m) of its receiver.
- Increase the distance between the presenter's receiver and the base units of other wireless devices.
- Turn off any wireless devices and their base units that are near the presenter's receiver.
- Replace the battery.

Product Specification

Wireless Presenter (AMP068)

2.4G Frequency Range	2402MHz-2480MHz
Bluetooth Frequency Range	2402MHz-2480MHz
Battery Type	AAA battery
Effective 2.4G RF Communication Range	20 metres max.
Effective Bluetooth Communication Range	10 metres max.
2.4G Maximum EIRP Power (dBm) (EU)	-6.2dBm
Bluetooth Maximum EIRP Power(dBm) (EU)	-6.0dBm
Rating	3V \pm 100mA

Wireless Receiver (AMP068R)

2.4G Frequency Range	2402MHz-2480MHz
Interface	USB 1.1 / 2.0
2.4G Maximum EIRP Power (dBm) (EU)	-12.7dBm
Rating	5V \pm 100mA

Targus Control Max

Targus

Supplier's Declaration of Conformity

CE

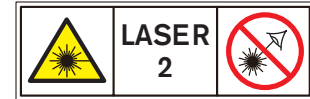
Manufacturer: Targus International LLC
Responsible party: 211 North Miller Street, Anaheim, CA 92805U SA
Tel: 1-714-765-5555
Fax: 1-714-765-5599
Internet: www.targus.com

Herby declares that the product
Traden name: Targus
Products name: Wireless Presenter, Wireless Receiver
Model number(s): A9500 (Wireless Presenter), A9500R (Wireless Receiver)
Conforms to the following specifications:
FCC CFR Title4 47 part 15 Subpart B and ANSI C63.4-2014 standard limits
That exist state: results re referred to the test report Number: **21071303257N-001**

Supplementary Information:
This device complies with part 15 of the FCCR rules. Operation is subject to the following two conditions: (1) This device may not cause harmful interference, and (2) this device must accept any interference received, including interference that may cause undesired operation.

Director: Targus International, LLC
Function Title: N/A
Date: 8/10/2021
Signed for and on behalf of Targus

Targus Control Max



AVOID EXPOSURE - HAZARDOUS ELECTROMAGNETIC RADIATION EMITTED FROM THIS APERTURE. LASER RADIATION. DO NOT STARE INTO THE BEAM OR VIEW DIRECTLY WITH OPTICAL INSTRUMENTS. CLASS 2 LASER PRODUCT. NEVER POINT A LASER BEAM INTO A PERSON'S EYES OR VIEW A LASER BEAM DIRECTLY. AS PROLONGED EXPOSURE CAN BE HAZARDOUS TO THE EYES. MOMENTARY EXPOSURE FROM A LASER POINTER, SUCH AS AN INADVERTENT SWEEP OF THE LIGHT ACROSS A PERSON'S EYES, MAY CAUSE TEMPORARY FLASH BLINDNESS SIMILAR TO THE EFFECT OF A CAMERA FLASH BULB. ALTHOUGH THIS CONDITION IS TEMPORARY, IT CAN BECOME MORE DANGEROUS IF THE EXPOSED PERSON IS ENGAGED IN A VISION-CRITICAL ACTIVITY SUCH AS DRIVING. CAUTION: ANY CHANGES OR MODIFICATIONS NOT EXPRESSLY APPROVED BY THE PARTY RESPONSIBLE FOR COMPLIANCE COULD VOID THE USER'S AUTHORITY TO OPERATE THE EQUIPMENT. THIS DEVICE AND ITS ANTENNA(S) MUST NOT BE CO-LOCATED OR OPERATING IN CONJUNCTION WITH ANY OTHER ANTENNA OR TRANSMITTER. YOUR DEVICE CONTAINS A LOW POWER TRANSMITTER. WHEN DEVICE IS TRANSMITTED IT SENDS OUT RADIO FREQUENCY (RF) SIGNAL. NOTE: THE MANUFACTURER IS NOT RESPONSIBLE FOR ANY RADIO OR TV INTERFERENCE CAUSED BY UNAUTHORIZED MODIFICATIONS TO THIS EQUIPMENT. SUCH MODIFICATIONS COULD VOID THE USER'S AUTHORITY TO OPERATE THE EQUIPMENT.

RF warning statement

The device has been evaluated to meet general RF exposure requirement. The device can be used in portable exposure condition without restriction.

Industry Canada Statement

This device contains licence-exempt transmitter(s) / receiver(s) that comply with Innovation, Science and Economic Development Canada's licence-exempt RSS(s). Operation is subject to the following two conditions:

1. This device may not cause interference.
2. This device must accept any interference, including interference that may cause undesired operation of the device.

L'émetteur / récepteur exempt de licence contenu dans le présent appareil est conforme aux CNR d'Innovation, Sciences et Développement économique Canada applicables aux appareils radio exempts de licence. L'exploitation est autorisée aux deux conditions suivantes:

1. L'appareil ne doit pas produire de brouillage;
2. L'appareil doit accepter tout brouillage radioélectrique subi, même si le brouillage est susceptible d'en compromettre le fonctionnement.

FCC Statement Tested to Comply

This device complies with Part 15 of the FCC Rules. Operation is subject to the following two conditions:

1. This device may not cause harmful interference, and
2. This device must accept any interference received, including interference that may cause undesired operation.

Warning: Changes or modifications not expressly approved by the party responsible for compliance could void the user's authority to operate the equipment.

NOTE: This equipment has been tested and found to comply with the limits for a Class B digital device, pursuant to Part 15 of the FCC Rules. These limits are designed to provide reasonable protection against harmful interference in a residential installation.

This equipment generates uses and can radiate radio frequency energy and, if not installed and used in accordance with the instructions, may cause harmful interference to radio communications. However, there is no guarantee that interference will not occur in a particular installation. If this equipment does cause harmful interference to radio or television reception, which can be determined by turning the equipment off and on, the user is encouraged to try to correct the interference by one or more of the following measures:

- Reorient or relocate the receiving antenna.
- Increase the separation between the equipment and receiver.
- Connect the equipment into an outlet on a circuit different from that to which the receiver is connected.
- Consult the dealer or an experienced radio/TV technician for help.

User can find the FCC ID number inside the battery box (user-accessible non-detachable compartment)

Targus

Declaration of Conformity

UK CA

Manufacturer: Targus International LLC
Address: 1211 North Miller Street, Anaheim, CA 92805 USA
Imported: Targus Europe Ltd.
3 New Square, Brillenton Lakes, Brixton Park, Farnham, Middlesex, TW14 8BA, UK
Tel: 1-714-765-5555
Fax: 1-714-765-5599
Email: www.targus.com
Tel: +44 (0)20 8831 2013

We herby confirm the following designated product: **Wireless Presenter/Receiver**, Model: **A9500/A9500R**, conforms to the following standards:
EN 55032:2015+A11:2020
EN 55035:2015+A11:2020
EN 60950-1:2012
EN 60950-2:2012
EN 60950-3:2012
EN 60950-4:2012
EN 60950-5:2012
EN 60950-6:2012
EN 60950-7:2012
EN 60950-8:2012
EN 60950-9:2012
EN 60950-10:2012
EN 60950-11:2012
EN 60950-12:2012
EN 60950-13:2012
EN 60950-14:2012
EN 60950-15:2012
EN 60950-16:2012
EN 60950-17:2012
EN 60950-18:2012
EN 60950-19:2012
EN 60950-20:2012
EN 60950-21:2012
EN 60950-22:2012
EN 60950-23:2012
EN 60950-24:2012
EN 60950-25:2012
EN 60950-26:2012
EN 60950-27:2012
EN 60950-28:2012
EN 60950-29:2012
EN 60950-30:2012
EN 60950-31:2012
EN 60950-32:2012
EN 60950-33:2012
EN 60950-34:2012
EN 60950-35:2012
EN 60950-36:2012
EN 60950-37:2012
EN 60950-38:2012
EN 60950-39:2012
EN 60950-40:2012
EN 60950-41:2012
EN 60950-42:2012
EN 60950-43:2012
EN 60950-44:2012
EN 60950-45:2012
EN 60950-46:2012
EN 60950-47:2012
EN 60950-48:2012
EN 60950-49:2012
EN 60950-50:2012
EN 60950-51:2012
EN 60950-52:2012
EN 60950-53:2012
EN 60950-54:2012
EN 60950-55:2012
EN 60950-56:2012
EN 60950-57:2012
EN 60950-58:2012
EN 60950-59:2012
EN 60950-60:2012
EN 60950-61:2012
EN 60950-62:2012
EN 60950-63:2012
EN 60950-64:2012
EN 60950-65:2012
EN 60950-66:2012
EN 60950-67:2012
EN 60950-68:2012
EN 60950-69:2012
EN 60950-70:2012
EN 60950-71:2012
EN 60950-72:2012
EN 60950-73:2012
EN 60950-74:2012
EN 60950-75:2012
EN 60950-76:2012
EN 60950-77:2012
EN 60950-78:2012
EN 60950-79:2012
EN 60950-80:2012
EN 60950-81:2012
EN 60950-82:2012
EN 60950-83:2012
EN 60950-84:2012
EN 60950-85:2012
EN 60950-86:2012
EN 60950-87:2012
EN 60950-88:2012
EN 60950-89:2012
EN 60950-90:2012
EN 60950-91:2012
EN 60950-92:2012
EN 60950-93:2012
EN 60950-94:2012
EN 60950-95:2012
EN 60950-96:2012
EN 60950-97:2012
EN 60950-98:2012
EN 60950-99:2012
EN 60950-100:2012
EN 60950-101:2012
EN 60950-102:2012
EN 60950-103:2012
EN 60950-104:2012
EN 60950-105:2012
EN 60950-106:2012
EN 60950-107:2012
EN 60950-108:2012
EN 60950-109:2012
EN 60950-110:2012
EN 60950-111:2012
EN 60950-112:2012
EN 60950-113:2012
EN 60950-114:2012
EN 60950-115:2012
EN 60950-116:2012
EN 60950-117:2012
EN 60950-118:2012
EN 60950-119:2012
EN 60950-120:2012
EN 60950-121:2012
EN 60950-122:2012
EN 60950-123:2012
EN 60950-124:2012
EN 60950-125:2012
EN 60950-126:2012
EN 60950-127:2012
EN 60950-128:2012
EN 60950-129:2012
EN 60950-130:2012
EN 60950-131:2012
EN 60950-132:2012
EN 60950-133:2012
EN 60950-134:2012
EN 60950-135:2012
EN 60950-136:2012
EN 60950-137:2012
EN 60950-138:2012
EN 60950-139:2012
EN 60950-140:2012
EN 60950-141:2012
EN 60950-142:2012
EN 60950-143:2012
EN 60950-144:2012
EN 60950-145:2012
EN 60950-146:2012
EN 60950-147:2012
EN 60950-148:2012
EN 60950-149:2012
EN 60950-150:2012
EN 60950-151:2012
EN 60950-152:2012
EN 60950-153:2012
EN 60950-154:2012
EN 60950-155:2012
EN 60950-156:2012
EN 60950-157:2012
EN 60950-158:2012
EN 60950-159:2012
EN 60950-160:2012
EN 60950-161:2012
EN 60950-162:2012
EN 60950-163:2012
EN 60950-164:2012
EN 60950-165:2012
EN 60950-166:2012
EN 60950-167:2012
EN 60950-168:2012
EN 60950-169:2012
EN 60950-170:2012
EN 60950-171:2012
EN 60950-172:2012
EN 60950-173:2012
EN 60950-174:2012
EN 60950-175:2012
EN 60950-176:2012
EN 60950-177:2012
EN 60950-178:2012
EN 60950-179:2012
EN 60950-180:2012
EN 60950-181:2012
EN 60950-182:2012
EN 60950-183:2012
EN 60950-184:2012
EN 60950-185:2012
EN 60950-186:2012
EN 60950-187:2012
EN 60950-188:2012
EN 60950-189:2012
EN 60950-190:2012
EN 60950-191:2012
EN 60950-192:2012
EN 60950-193:2012
EN 60950-194:2012
EN 60950-195:2012
EN 60950-196:2012
EN 60950-197:2012
EN 60950-198:2012
EN 60950-199:2012
EN 60950-200:2012
EN 60950-201:2012
EN 60950-202:2012
EN 60950-203:2012
EN 60950-204:2012
EN 60950-205:2012
EN 60950-206:2012
EN 60950-207:2012
EN 60950-208:2012
EN 60950-209:2012
EN 60950-210:2012
EN 60950-211:2012
EN 60950-212:2012
EN 60950-213:2012
EN 60950-214:2012
EN 60950-215:2012
EN 60950-216:2012
EN 60950-217:2012
EN 60950-218:2012
EN 60950-219:2012
EN 60950-220:2012
EN 60950-221:2012
EN 60950-222:2012
EN 60950-223:2012
EN 60950-224:2012
EN 60950-225:2012
EN 60950-226:2012
EN 60950-227:2012
EN 60950-228:2012
EN 60950-229:2012
EN 60950-230:2012
EN 60950-231:2012
EN 60950-232:2012
EN 60950-233:2012
EN 60950-234:2012
EN 60950-235:2012
EN 60950-236:2012
EN 60950-237:2012
EN 60950-238:2012
EN 60950-239:2012
EN 60950-240:2012
EN 60950-241:2012
EN 60950-242:2012
EN 60950-243:2012
EN 60950-244:2012
EN 60950-245:2012
EN 60950-246:2012
EN 60950-247:2012
EN 60950-248:2012
EN 60950-249:2012
EN 60950-250:2012
EN 60950-251:2012
EN 60950-252:2012
EN 60950-253:2012
EN 60950-254:2012
EN 60950-255:2012
EN 60950-256:2012
EN 60950-257:2012
EN 60950-258:2012
EN 60950-259:2012
EN 60950-260:2012
EN 60950-261:2012
EN 60950-262:2012
EN 60950-263:2012
EN 60950-264:2012
EN 60950-265:2012
EN 60950-266:2012
EN 60950-267:2012
EN 60950-268:2012
EN 60950-269:2012
EN 60950-270:2012
EN 60950-271:2012
EN 60950-272:2012
EN 60950-273:2012
EN 60950-274:2012
EN 60950-275:2012
EN 60950-276:2012
EN 60950-277:2012
EN 60950-278:2012
EN 60950-279:2012
EN 60950-280:2012
EN 60950-281:2012
EN 60950-282:2012
EN 60950-283:2012
EN 60950-284:2012
EN 60950-285:2012
EN 60950-286:2012
EN 60950-287:2012
EN 60950-288:2012
EN 60950-289:2012
EN 60950-290:2012
EN 60950-291:2012
EN 60950-292:2012
EN 60950-293:2012
EN 60950-294:2012
EN 60950-295:2012
EN 60950-296:2012
EN 60950-297:2012
EN 60950-298:2012
EN 60950-299:2012
EN 60950-300:2012
EN 60950-301:2012
EN 60950-302:2012
EN 60950-303:2012
EN 60950-304:2012
EN 60950-305:2012
EN 60950-306:2012
EN 60950-307:2012
EN 60950-308:2012
EN 60950-309:2012
EN 60950-310:2012
EN 60950-311:2012
EN 60950-312:2012
EN 60950-313:2012
EN 60950-314:2012
EN 60950-315:2012
EN 60950-316:2012
EN 60950-317:2012
EN 60950-318:2012
EN 60950-319:2012
EN 60950-320:2012
EN 60950-321:2012
EN 60950-322:2012
EN 60950-323:2012
EN 60950-324:2012
EN 60950-325:2012
EN 60950-326:2012
EN 60950-327:2012
EN 60950-328:2012
EN 60950-329:2012
EN 60950-330:2012
EN 60950-331:2012
EN 60950-332:2012
EN 60950-333:2012
EN 60950-334:2012
EN 60950-335:2012
EN 60950-336:2012
EN 60950-337:2012
EN 60950-338:2012
EN 60950-339:2012
EN 60950-340:2012
EN 60950-341:2012
EN 60950-342:2012
EN 60950-343:2012
EN 60950-344:2012
EN 60950-345:2012
EN 60950-346:2012
EN 60950-347:2012
EN 60950-348:2012
EN 60950-349:2012
EN 60950-350:2012
EN 60950-351:2012
EN 60950-352:2012
EN 60950-353:2012
EN 60950-354:2012
EN 60950-355:2012
EN 60950-356:2012
EN 60950-357:2012
EN 60950-358:2012
EN 60950-359:2012
EN 60950-360:2012
EN 60950-361:2012
EN 60950-362:2012
EN 60950-363:2012
EN 60950-364:2012
EN 60950-365:2012
EN 60950-366:2012
EN 60950-367:2012
EN 60950-368:2012
EN 60950-369:2012
EN 60950-370:2012
EN 60950-371:2012
EN 60950-372:2012
EN 60950-373:2012
EN 60950-374:2012
EN 60950-375:2012
EN 60950-376:2012
EN 60950-377:2012
EN 60950-378:2012
EN 60950-379:2012
EN 60950-380:2012
EN 60950-381:2012
EN 60950-382:2012
EN 60950-383:2012
EN 60950-384:2012
EN 60950-385:2012
EN 60950-386:2012
EN 60950-387:2012
EN 60950-388:2012
EN 60950-389:2012
EN 60950-390:2012
EN 60950-391:2012
EN 60950-392:2012
EN 60950-393:2012
EN 60950-394:2012
EN 60950-395:2012
EN 60950-396:2012
EN 60950-397:2012
EN 60950-398:2012
EN 60950-399:2012
EN 60950-400:2012
EN 60950-401:2012
EN 60950-402:2012
EN 60950-403:2012
EN 60950-404:2012
EN 60950-405:2012
EN 60950-406:2012
EN 60950-407:2012
EN 60950-408:2012
EN 60950-409:2012
EN 60950-410:2012
EN 60950-411:2012
EN 60950-412:2012
EN 60950-413:2012
EN 60950-414:2012
EN 60950-415:2012
EN 60950-416:2012
EN 60950-417:2012
EN 60950-418:2012
EN 60950-419:2012
EN 60950-420:2012
EN 60950-421:2012
EN 60950-422:2012
EN 60950-423:2012
EN 60950-424:2012
EN 60950-425:2012
EN 60950-426:2012
EN 60950-427:2012
EN 60950-428:2012
EN 60950-429:2012
EN 60950-430:2012
EN 60950-431:2012
EN 60950-432:2012
EN 60950-433:2012
EN 60950-434:2012
EN 60950-435:2012
EN 60950-436:2012
EN 60950-437:2012
EN 60950-438:2012
EN 60950-439:2012
EN 60950-440:2012
EN 60950-441:2012
EN 60950-442:2012
EN 60950-443:2012
EN 60950-444:2012
EN 60950-445:2012
EN 60950-446:2012
EN 60950-447:2012
EN 60950-448:2012
EN 60950-449:2012
EN 60950-450:2012
EN 60950-451:2012
EN 60950-452:2012
EN 60950-453:2012
EN 60950-454:2012
EN 60950-455:2012
EN 60950-456:2012
EN 60950-457:2012
EN 60950-458:2012
EN 60950-459:2012
EN 60950-460:2012
EN 60950-461:2012
EN 60950-462:2012
EN 60950-463:2012
EN 60950-464:2012
EN 60950-465:2012
EN 60950-466:2012
EN 60950-467:2012
EN 60950-468:2012
EN 60950-469:2012
EN 60950-470:2012
EN 60950-471:2012
EN 60950-472:2012
EN 60950-473:2012
EN 60950-474:2012
EN 60950-475:2012
EN 60950-476:2012
EN 60950-477:2012
EN 60950-478:2012
EN 60950-479:2012
EN 60950-480:2012
EN 60950-481:2012
EN 60950-482:2012
EN 60950-483:2012
EN 60950-484:2012
EN 60950-485:2012
EN 60950-486:2012
EN 60950-487:2012
EN 60950-488:2012
EN 60950-489:2012
EN 60950-490:2012
EN 60950-491:2012
EN 60950-492:2012
EN 60950-493:2012
EN 60950-494:2012
EN 60950-495:2012
EN 60950-496:2012
EN 60950-497:2012
EN 60950-498:2012
EN 60950-499:2012
EN 60950-500:2012
EN 60950-501:2012
EN 60950-502:2012
EN 60950-503:2012
EN 60950-504:2012
EN 60950-505:2012
EN 60950-506:2012
EN 60950-507:2012
EN 60950-508:2012
EN 60950-509:2012
EN 60950-510:2012
EN 60950-511:2012
EN 60950-512:2012
EN 60950-513:2012
EN 60950-514:2012
EN 60950-515:2012
EN 60950-516:2012
EN 60950-517:2012
EN 60950-518:2012
EN 60950-519:2012
EN 60950-520:2012
EN 60950-521:2012
EN 60950-522:2012
EN 60950-523:2012
EN 60950-524:2012
EN 60950-525:2012
EN 60950-526:2012
EN 60950-527:2012
EN 60950-528:2012
EN 60950-529:2012
EN 60950-530:2012
EN 60950-531:2012
EN 60950-532:2012
EN 60950-533:2012
EN 60950-534:2012
EN 60950-535:2012
EN 60950-536:2012
EN 60950-537:2012
EN 60950-538:2012
EN 60950-539:2012
EN 60950-540:2012
EN 60950-541:2012
EN 60950-542:2012
EN 60950-543:2012
EN 60950-544:2012
EN 60950-545:2012
EN 60950-546:2012
EN 60950-547:2012
EN 60950-548:2012
EN 60950-549:2012
EN 60950-550:2012
EN 60950-551:2012
EN 60950-552:2012
EN 60950-553:2012
EN 60950-554:2012
EN 60950-555:2012
EN 60950-556:2012
EN

Declaration of Conformity

Hereby, Targus, declares that this device is in compliance with the essential requirements and other relevant provisions of Directive 2014/53/EU.

AP CUSTOMERS: 3 YEARS LIMITED WARRANTY**EMEA CUSTOMERS: 2 YEARS LIMITED WARRANTY****OTHER REGIONS: 1 YEAR LIMITED WARRANTY**

We pride ourselves on the quality of our products. For complete warranty details and a list of our worldwide offices, please visit www.targus.com.

Targus product warranty does not cover any device or product that is not manufactured by Targus (including, but not limited to, laptops, smartphones, devices, or any other product that may be used in connection with the Targus product). Australian customers: For complete warranty details see warranty statement enclosed.

Targus is a registered trademark of Targus International LLC in the U.S. and in certain other countries. Windows is a registered trademark or trademark of Microsoft Corporation in the United States and/or other countries. macOS is a trademark of Apple Inc., registered in the U.S. and other countries. Chrome OS is a trademark of Google LLC. Bluetooth is a registered trademark of Bluetooth SIG, Inc. All logos and registered trademarks are the property of their respective owners. ©2021 Targus, 1211 North Miller Street, Anaheim, CA 92806. All rights reserved.

Product Registration

Targus recommends that you register your Targus accessory shortly after purchasing it. Go to targus.com/us/product_registration

You will need to provide your full name, email address, country of residence and product information.

Technical Support

For technical questions, please visit:

US	targus.com/us/support	1.800.283.6325
CAN	Internet: targus.com/ca/support	
EMEA	targus.com/uk/support	+44 (0)20-7744-0330
Australia	targus.com/au/support	1800.641.645 (NZ 0800.633.222)
Latin America	soporte@targus.com	

AUSTRALIAN AND NEW ZEALAND CONSUMERS ONLY

Thank you for your purchase. Targus warrants to the original purchaser that its products are free from defects in materials and workmanship, during the specified warranty period, and lasts as long as the original purchaser owns the product. The warranty period is stated on the packaging or in the documentation provided with this Targus product. Targus' Limited Product Warranty excludes damage caused by accident, neglect, abuse, misuse, improper care, normal wear and tear, ownership transfer, or alteration. The limited warranty also excludes any product that is not manufactured by Targus (including, without limitation, laptops, smartphones, devices, tablets, or any other non-Targus item) that is used in connection with the Targus product.

In the event that the Targus product has a defect in materials or workmanship Targus will, after receiving a warranty claim and inspecting the product, at its discretion, do one of the following: repair, replace, or refund with the same or a similar product (or part) of no lesser quality and ship it to the original purchaser at Targus' expense. As part of this inspection, proof of purchase will be required. There is no charge for inspection. To make a warranty claim, please contact Targus Australia or New Zealand (see details below), or return the product to the place of purchase. The original purchaser must bear the cost of the delivery to Targus.

Under Australian and/or New Zealand Consumer Laws, in addition to any warranty Targus gives, our products come with guarantees that cannot be excluded. You are entitled to a replacement or refund for a major failure and compensation for any other reasonably foreseeable loss or damage. You are entitled to have the products repaired or replaced if they fail to be of acceptable quality and the failure does not amount to a major failure.

For any warranty question, contact Targus Australia Pty. Ltd. (i) by mail at Suite 2, Level 8, 5 Rider Boulevard, Rhodes NSW 2138, by phone AUS 1800 641 645 or NZ 0800 633 222 or by Email: infoaust@targus.com. For additional information, check out our website at targus.com/au/warranty.

Technical Support

For technical questions, please contact us via the following options:

Email

techsupport@targus.com

Internet

<http://www.targus.com/>

Telephone**Targus Asia Pacific – Hong Kong**

Monday through Friday, 9:00 a.m. (09:00) to 5:30 p.m. (17:30): (+852) 2526-2620

Targus Asia Pacific – South Asia

Monday through Friday, 9:00 a.m. (09:00) to 6:00 p.m. (18:00): (+65) 6383-1330

Targus Australia

Monday through Friday, 9:00 a.m. (09:00) to 5:00 p.m. (17:00): (+61) 2-9807-1222

Targus Japan

Monday through Friday, 10:00 a.m. (10:00) to 5:00 p.m. (17:00): (+81) 3-3254-7070

Targus Korea

Monday through Friday, 9:00 a.m. (09:00) to 6:00 p.m. (18:00): (82) 10 3344 3757

Targus Taiwan

Monday through Friday, 9:00 a.m. (09:00) to 5:30 p.m. (17:30): (+886) 2-2723-1836

Targus Thailand

Monday through Friday, 9:00 a.m. (09:00) to 6:00 p.m. (18:00): (+66) 0-2634-4201