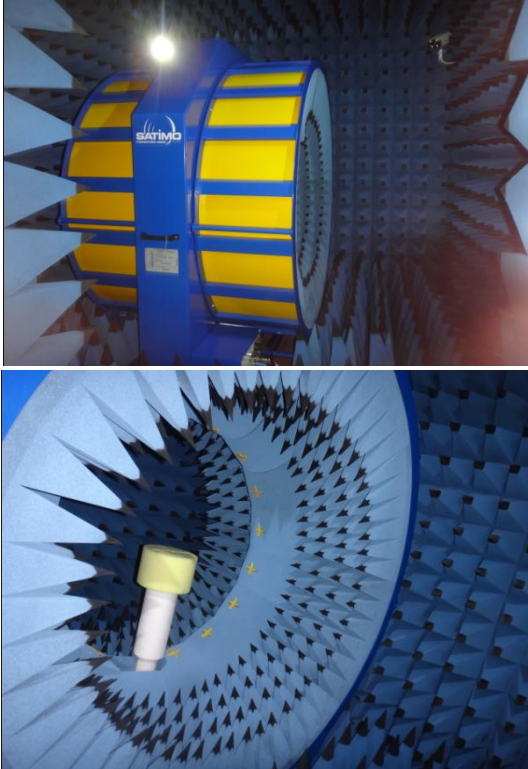


Test report



Customer name	Arrow	Project name	P04
Commissioning band	WiFi/5G	Structural mode	FPC+weld
Radio frequency engineer	Xiang Yi	Structural engineer	Du Qiang
Antenna type	monopole	date	2025/1/11



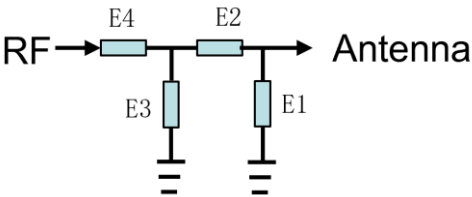
tarLab 3D laboratory, originally imported from France SATIMO Company, can accurately and quickly test the TRP, TIS, efficiency, gain, apple chart, direction chart and other parameter data of communication terminal products such as mobile phones, tablets and notebooks.

Antenna report version summary

edition	date	Content overview
V1.0	2024/6/24	Sample passive antenna test report
V2.0	2025/1/11	Certification test report

The WiFi antenna matching circuit ----- has not been changed

Element	E1	E2	E3	E4
Value	NC	0 Ω	NC	0 Ω



Passive antenna gain efficiency WIFI/5G

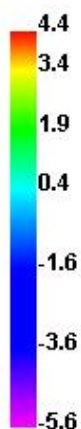
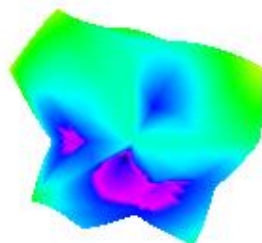
Freq (MHz)	Effi (%)	Gain (dBi)
5150	53.31	4.42
5200	50.82	4.35
5250	58.51	4.99
5300	50.86	4.38
5350	50.29	4.42
5400	51.75	4.4
5450	54.67	4.24
5500	46.8	3.42
5550	42.2	2.7
5600	41.97	2.34
5650	40.08	2.38
5700	43.96	2.41
5750	46.82	2.58
5800	41.67	1.91
5850	43.73	2.06

Antenna installation diagram

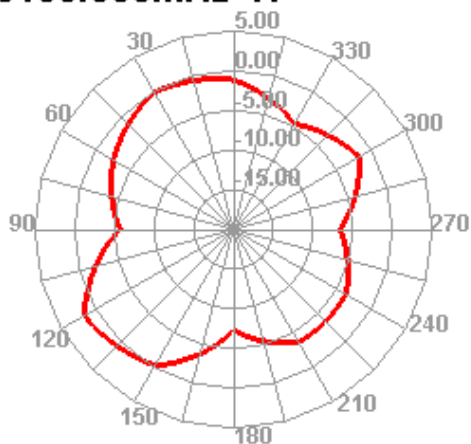


Apple chart direction

5150.000MHz

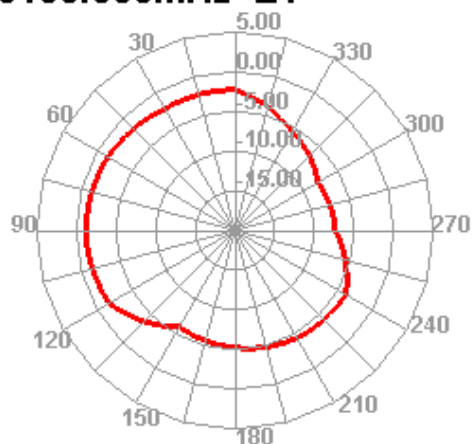


5150.000MHz H

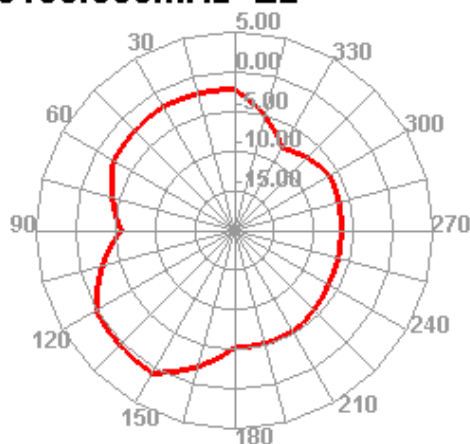


chart

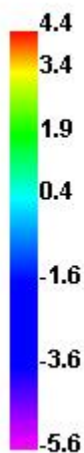
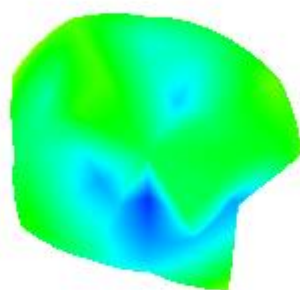
5150.000MHz E1



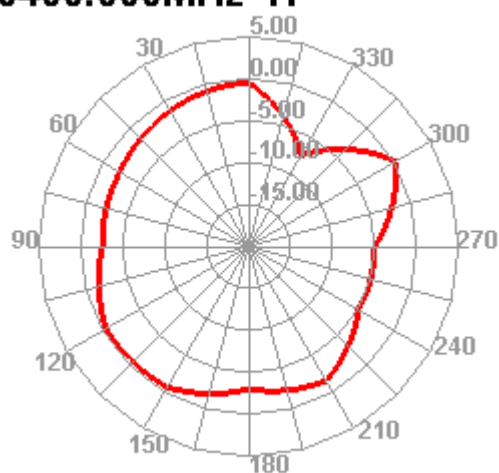
5150.000MHz E2



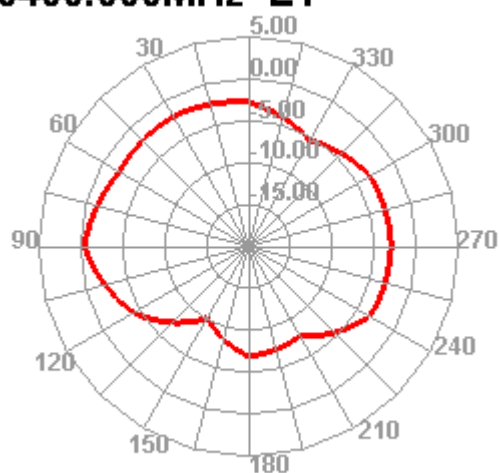
5400.000MHz



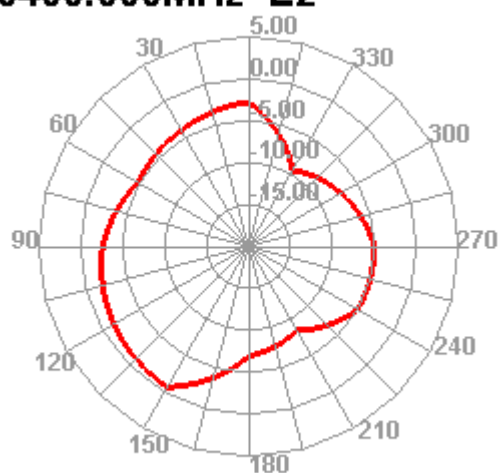
5400.000MHz H



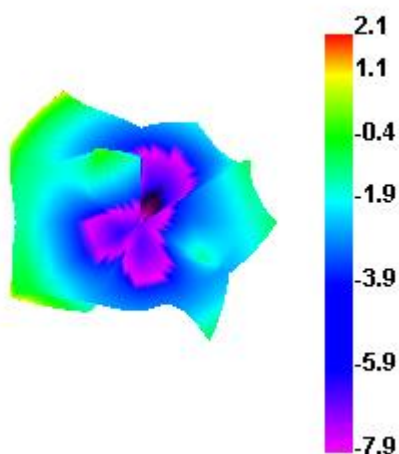
5400.000MHz E1



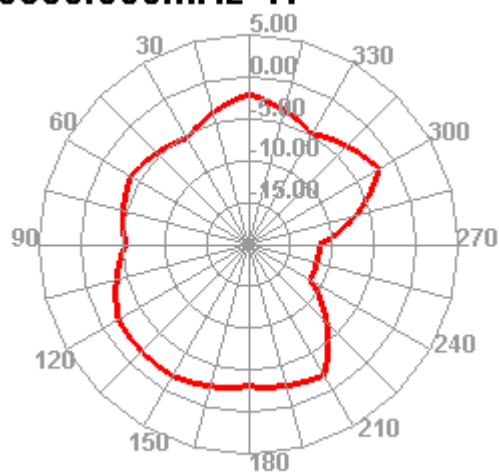
5400.000MHz E2



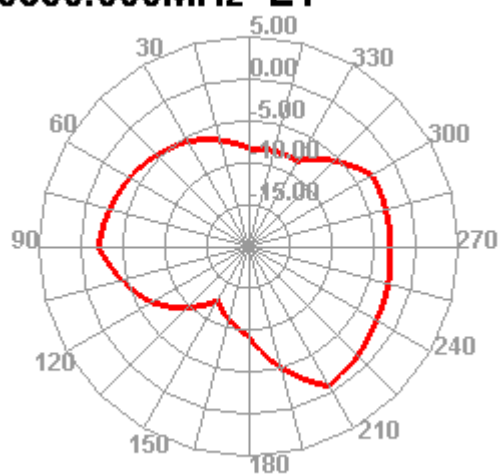
5850.000MHz



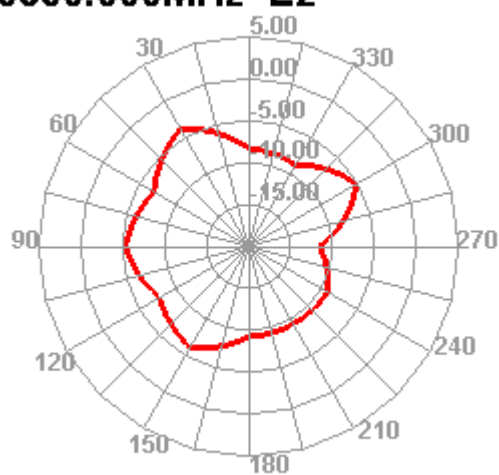
5850.000MHz H



5850.000MHz E1



5850.000MHz E2



Environmental treatment**No environment treatment****Note:**

- 1, this antenna is only suitable for debugging prototype, motherboard PCB or RF circuit material changes, accessories (such as camera, screen, horn, motor, battery, shell process) and other changes, must be tested and verified by our company before use.
2. If this project needs to be verified by the third party, please send the prototype to our company for retesting at least one working day in advance, and then send it to our company for testing, so as to avoid delays in the project progress after two or multiple tests!