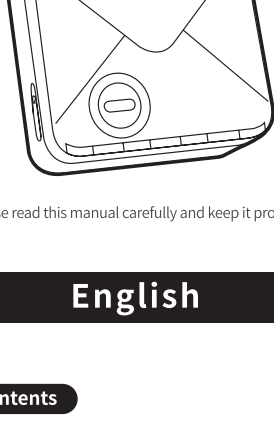


# Quick Start Guide

# M02S

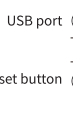
Mini  
Printer



Before using, please read this manual carefully and keep it properly for future reference.

## English

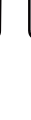
### 01. Package Contents



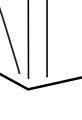
Printer\*1



Thermal Paper \*1



Data Cable\*1

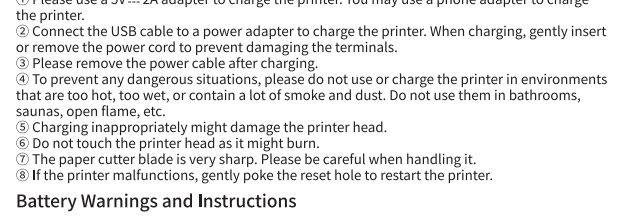


paper holder  
baffle\*1



Instruction  
Manual\*1

### 02. Printer Components



#### Indicator Light Guide

Power Indicator	Lighting form	power on/printing normally/charging completed
	Slow flashing	charging
	Quick flashing	out of paper / overheating/Insufficient battery
	Off	Shut down/charge completed

### 03. Note

- Please use a 5V=2A adapter to charge the printer. You may use a phone adapter to charge the printer.
- Connect the USB cable to a power adapter to charge the printer. When charging, gently insert or remove the power cord to prevent damaging the terminals.
- Please remove the power cable after charging.
- To prevent any dangerous situations, please do not use or charge the printer in environments that are too hot, too wet, or contain a lot of smoke and dust. Do not use them in bathrooms, saunas, open flame, etc.
- Charging inappropriately might damage the printer head.
- Do not touch the printer head as it might burn.
- The paper cutter blade is very sharp. Please be careful when handling it.
- If the printer malfunctions, gently poke the reset hole to restart the printer.

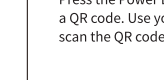
#### Battery Warnings and Instructions

- \* Do not disassemble, crush, break, or toss the batteries into fire.
- \* Please do not reuse when the battery is swollen.
- \* Please do not use if the battery is exposed to water and high temperature.
- \* Using the wrong battery may cause an explosion. Please dispose of used batteries according to the Instruction Manual.
- \* If the user wishes to use an adapter, please purchase and use adapters that have CCC certificates or fulfill relevant safety standards.

### 04. How to Download the App

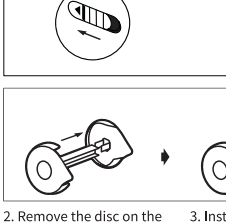
#### Mobile Download

Please search for “Phomemo” on your device’s app market and download the software.

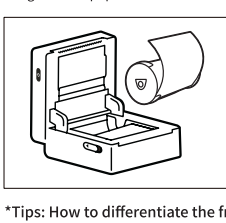


Phomemo

### 05. How to Connect to the App

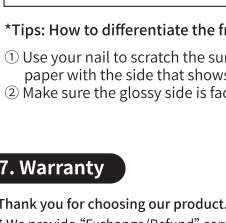


- For your first use, please charge the printer fully. Press and hold the Power Button for around 3 seconds to start the printer.
- Connecting to the Printer.



#### Method 1:

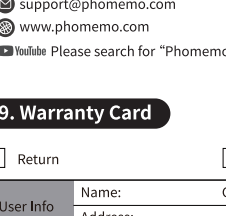
Turn on the Bluetooth function on your phone. Connect after searching for M02S on your Phomemo App.



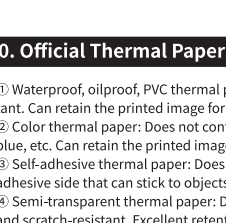
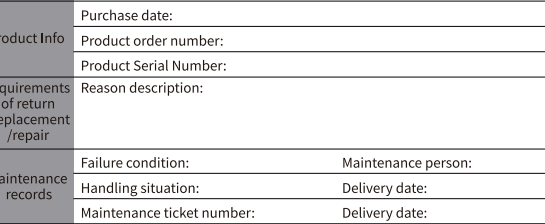
#### Method 2:

Press the Power Button twice to print out a QR code. Use your Phomemo App to scan the QR code.

### 06. How to Replace the Thermal Paper



- Open the printer’s cover. Take out the paper holder.



- Put in the paper holder and close the printer’s cover.

#### \*Tips: How to differentiate the front and back parts of the Thermal Paper?

- Use your nail to scratch the surface of the Thermal Paper. Install the thermal paper with the side that shows color facing up.
- Make sure the glossy side is facing upward.

### 07. Warranty

Thank you for choosing our product.

\* We provide “Exchange/Refund” services for customers within one year upon the purchase of the product.

### 08. After-sales services

Whatsapp : +86 13928088284 / +86 15338193665  
Skype : Phomemo Team-Jessie / Phomemo Team-Helen  
☎ +1 855 957 5321(US only)  
Office Hours: Monday to Friday from 9 a.m. to 5 p.m. EST  
✉ support@phomemo.com  
🌐 www.phomemo.com  
📺 YouTube Please search for “Phomemo” to find more guides on how to operate the printer.

### 09. Warranty Card

☐ Return ☐ Exchange ☐ Repair

User Info	Name:	Gender:	Phone:
	Address:		
Product Info	Purchase date:		
	Product order number:		
	Product Serial Number:		
Requirements of return /replacement /repair	Reason description:		
Maintenance records	Failure condition:	Maintenance person:	
	Handling situation:	Delivery date:	
	Maintenance ticket number:	Delivery date:	

### 10. Official Thermal Paper Type

- Waterproof, oilproof, PVC thermal paper: Does not contain Bisphenol-A. Scratch-resistant. Can retain the printed image for 7-10 years.
  - Color thermal paper: Does not contain Bisphenol-A. Includes colors such as yellow, pink, blue, etc. Can retain the printed image for up to 5 years.
  - Self-adhesive thermal paper: Does not contain Bisphenol-A. The thermal paper has an adhesive side that can stick to objects. Can retain the printed image for up to 10 years.
  - Semi-transparent thermal paper: Does not contain Bisphenol-A. Waterproof, oilproof, and scratch-resistant. Excellent retention of the printed image for up to 15 years.
- \*The above-mentioned are official Phomemo thermal papers.  
\*We are not responsible for any damage caused to the printer if unofficial thermal papers are used.

### 11. Basic Functions

#### 10.1 Print images

Steps:

- Choose the “Print Images” function in the Phomemo App
- Add the photos you wish to print.
- Adjust the setting of the image in the workspace.
- Choose the printing intensity.
- Press the “Print” button on the lower right corner to print.

#### 10.2 Graphic Function

The Graphics library contains various materials drawn by artists. You can modify and personalize the materials using the following steps.

Step 1: Select the “Graphic” function in the Phomemo App.

Step 2: Select any object to enter the edit screen.

Step 3: You can create personalized edits by adding text, table, image, stickers, QR codes on the edit screen. Any content edited is previewed on the edit screen.

Function	Description
Text	Selecting “Text” will insert a text box for editing. You can edit the content’s font, alignment, etc.
Table	Selecting “Table” will insert a table for editing.
Image	Selecting “Image” will insert an image for editing or printing.
Emoji	Selecting “Emoji” will insert an Emoji for editing or printing.
QR Code	Selecting “QR Code” will bring you to a screen where you can insert any text or numbers to generate a QR Code.

Step 4: Press the button on the upper right corner to print.

#### 10.3 Printing Windows Application Files

Select the “Print Web” function in the Phomemo App and enter the URL to access the webpage. Press the “Print” button to print the content of the webpage.

### 12. Frequently Asked Questions

Common problems and solutions		
Problem	Reason	Solution
Only half the paper is printed	1. The paper holder is not installed correctly	Reinstall the paper holder according to the paper adapter.
	2. The printer head did not connect properly	Reinstall the paper holder according to the paper adapter.
The printer cannot charge properly	1. Unable to charge	Connect the printer. You can check the remaining power of the printer at the Bluetooth connection indicator in the upper right corner.
	2. The charger is overheating	Use a 5V = 2A charger. Under normal circumstances, the printer will be fully charged in 2-5 hours.
	3. Unable to switch on printer	Do not leave the printer uncharged for more than 3 months or so. The battery power might run out completely and fail to activate or charge.
Cannot connect to the Printer’s Bluetooth	1. Your phone’s Bluetooth is deactivated	Activate your phone’s Bluetooth. (Bluetooth function does not activate automatically. You have to activate it manually)
	2. The App cannot detect the printer	The printer is not turned on. Turn on the printer.
		Press the Power Button of the printer twice to print the QR Code. Scan the QR Code to connect to the printer.
	3. Connecting to multiple devices	Disconnect your printer from other existing phones. You may only connect the printer to one phone at a time. You cannot connect to the printer while connected to your Bluetooth earphones. Disconnect from all other devices before connecting to the printer.
Unable to print	4. The phone’s location has not been turned on	Android devices need to turn on their location.
	1. Paper comes out without prints	The paper is installed the other way round. The printing surface should be installed facing up.
	2. System Bug	Restart your phone.
	3. There’s a black line on the paper	The paper is stuck, pull out some paper.
Paper jammed in the printer	4. The Indicator light is flashing	There’s no power. Charge for half an hour. Reinstall the paper. The paper is not pulled to the output slot. Pull a segment of paper out of the paper output slot.
	1. The paper roll has become loose and causes a jam	Remove the paper holder, manually pull the paper roll tight, and reinstall the paper holder. Or use the paper roll directly.
App shows that the printer has run out of paper	2. There’s a foreign object in the printer	Open the printer’s paper compartment and use rubbing alcohol to clean the interior of the printer.
	1. No paper comes out	Reinstall the paper. The paper is not extended toward the paper output slot.
Missing prints	2. The sensor cannot detect any paper	The sensor has malfunctioned. Use rubbing alcohol to clean the sensor.
	3. System Bug	Uninstall and reinstall the App
	1. The paper holder is not installed correctly	Reinstall the paper holder according to the paper adapter.
The text on the paper is faint	2. The paper is wrinkled or deformed	Take out the paper and cut off the deformed area. Reinstall and continue to print.
	3. The printer’s cover is not closed properly	Close the printer’s cover properly using your palm.
	4. The printer’s power is too low	No power. Charge before printing. Set the printing intensity to the highest.
	5. The paper is exposed to the air for a long time	The paper will expire even if placed inside the machine when exposed to humidity and the air for a long time.
		Store unused paper in a sealed bag or container.
The text on the paper is faint	Improper storage	Thermal paper should not be glued together.
		Record your edits before you print. After printing, avoid using permanent markers or rollerball pens on the paper.
		Environmental temperature, humidity, alcohol, sanitizers, sweat, or hand soap can cause the text to fade.
		Store the printing papers away from sunlight in a dry environment.
		After printing, do not store the paper with the printing surface touching another printing surface or plastic surface.
		Please choose self-adhesive thermal paper. Some alkaline-based adhesive will cause the print to fade faster.

### 13. FCC Warning

This device complies with part 15 of the FCC Rules. Operation is subject to the following two conditions:(1) This device may not cause harmful interference, and (2) this device must accept any interference received, including interference that may cause undesired operation.

Any Changes or modifications not expressly approved by the party responsible for compliance could void the user’s authority to operate the equipment.

This equipment has been tested and found to comply with the limits for a Class B digital device, pursuant to part 15 of the FCC Rules. These limits are designed to provide reasonable protection against harmful interference in a residential installation. This equipment generates uses and can radiate radio frequency energy and, if not installed and used in accordance with the instructions, may cause harmful interference to radio communications. However, there is no guarantee that interference will not occur in a particular installation. If this equipment does cause harmful interference to radio or television reception, which can be determined by turning the equipment off and on, the user is encouraged to try to correct the interference by one or more of the following measures:

- Reorient or relocate the receiving antenna.
- Increase the separation between the equipment and receiver.
- Connect the equipment into an outlet on a circuit different from that to which the receiver is connected.
- Consult the dealer or an experienced radio/TV technician for help.

The device has been evaluated to meet general RF exposure requirement. The device can be used in portable exposure condition without restriction.

### 14. ISCED Warning

IC Warning statement:

This device contains licence-exempt transmitter(s)/receiver(s) that comply with Innovation, Science and Economic Development Canada’s licence-exempt RSS(s). Operation is subject to the following two conditions:

- This device may not cause interference.
- This device must accept any interference, including interference that may cause undesired operation of the device.

L’ émetteur/récepteur exempt de licence contenu dans le présent appareil est conforme aux CNR d’ Innovation, Sciences et Développement économique Canada applicables aux appareils radio exempts de licence. L’ exploitation est autorisée aux deux conditions suivantes:

- L’ appareil ne doit pas produire de brouillage;
- L’ appareil doit accepter tout brouillage radioélectrique subi, même si le brouillage est susceptible d’ en compromettre le fonctionnement.

RF exposure statement

IC RF exposure statement:

The device has been evaluated to meet general IC RF exposure requirement. The device can be used in portable exposure condition without restriction.

IC Déclaration d’exposition aux RF:

L’appareil a été évalué pour répondre aux exigences générales d’exposition aux RF d’IC. L’appareil peut être utilisé dans des conditions d’exposition portable sans restriction.