

NEW

DATAMASTER™ Series **60° Sector Antennas**

for 2-way MMDS Applications

Now Andrew offers an alternative to wireline access for providing data (including Internet) and voice services to multiple dwelling units and small businesses.

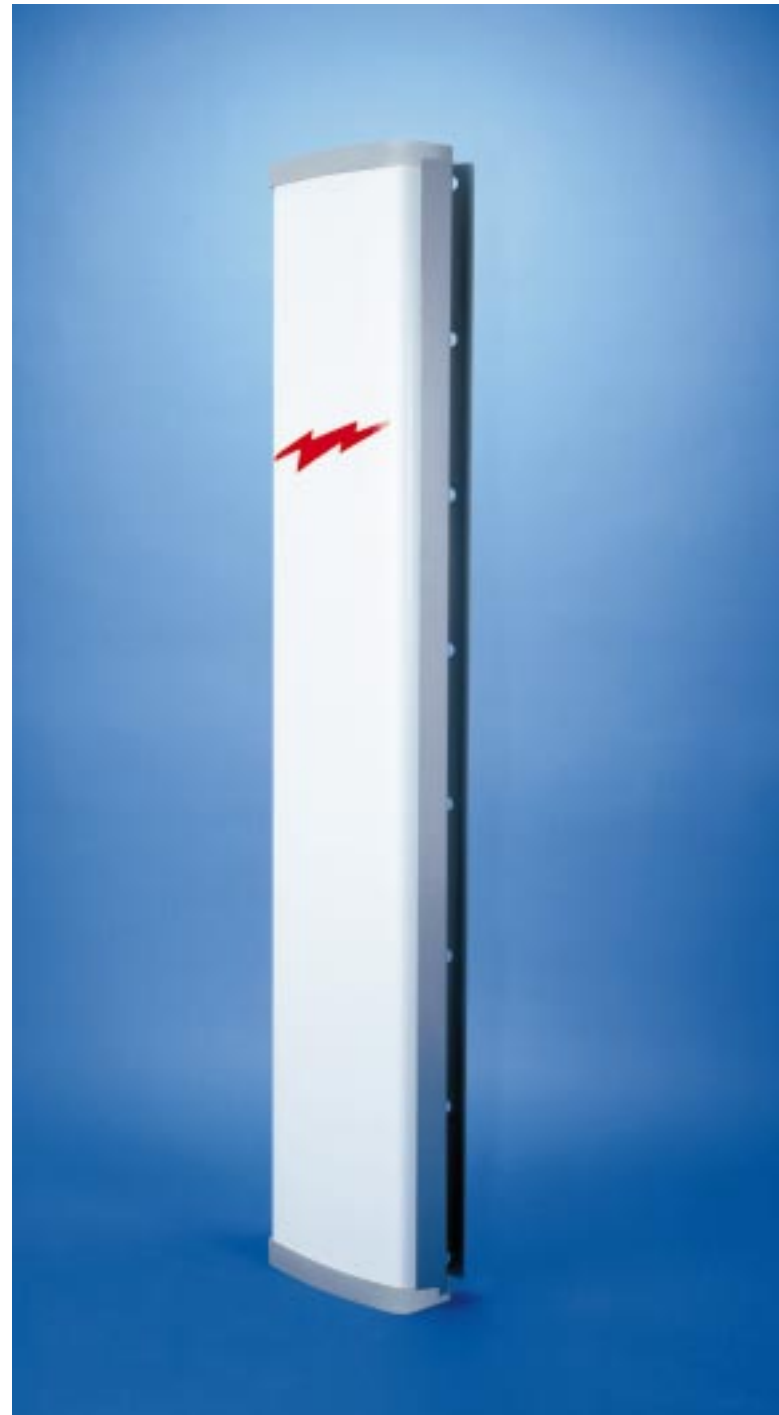
DATAMASTER sector antennas are specifically designed to meet the demands of the new 2-way MMDS marketplace created by recent FCC rulemaking.

DATAMASTER antennas are optimized for sectorized data transmission and efficient use of the MMDS spectrum for data applications. Versions are available to meet specific gain, band and polarity requirements for frequency reuse.

These new sector antennas are the latest addition to the Andrew market-leading family of internationally acclaimed HMD Series antennas for MDS and MMDS applications.

- *Efficient spectrum utilization – antenna pattern performance features excellent front to back ratios.*
- *Available in both horizontal (-H) and vertical (-V) polarization.*
- *W band (2500 - 2700 MHz) and NQ (2150-2162) antennas available in 18 dBi gain.*
- *Comprehensive three year warranty.*
- *For availability of other sector sizes and models, contact your Account Manager or Andrew at 1-800-DIAL-4RF.*

For more information:
1-800-DIAL-4RF

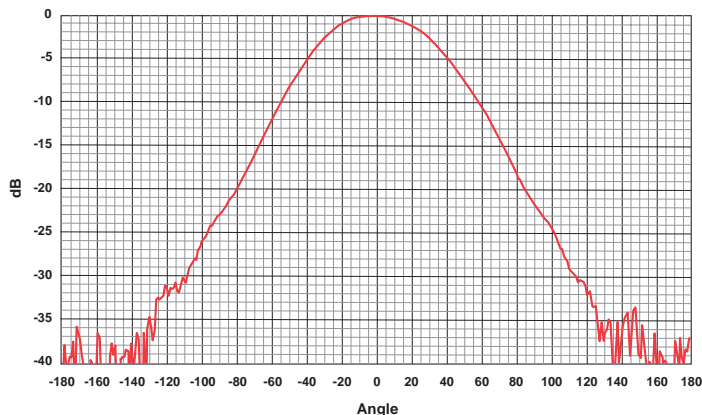
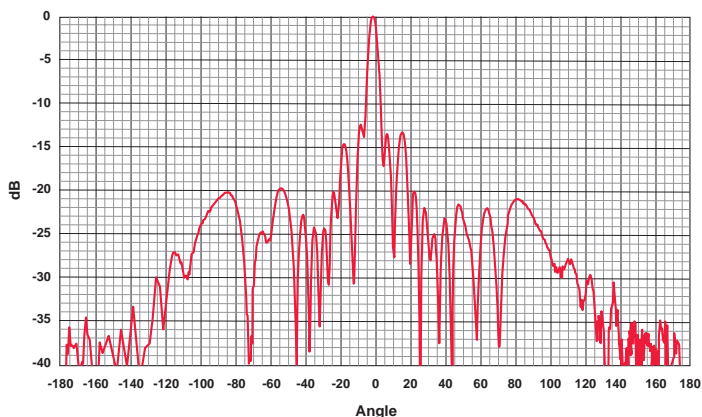


NEW**Electrical Specifications**

Gain, dBi	18
Frequency Band, MHz	
Type DMP18NQ060-H	2150-2162
Type DMP18NQ060-V	2150-2162
Type DMP18W060-H	2500-2700
Type DMP18W060-V	2500-2700
Azimuth Beamwidth, degrees	60
Polarization	Horizontal or Vertical
Impedance, ohms	50
Front-to-Back Ratio (135° to 225°), dB	-32
Input Power Rating, Average, watts	200
Lightning Protection	dc ground
Return Loss, dB (VSWR)	>14 (1.5:1)

Mechanical Specifications

Type No.	DMP18 (18 gain)
Mounting	Side Mount (tilt)
Input Connector	7-16 DIN
Dimensions, in (mm)	40 x 13.50 x 3.25 (1016 x 343 x 82)
Weight, lb (kg)	27 (12)
Radome Material	ABS
Radome Color	Gray
Environmental	
Survival Wind Speed, mph (km/hr)	125 (200)
Temperature Range, °C (°F)	-40 to +70 (-40 to 158)
Humidity	0 to 100% Condensing

Antenna Pattern Performance**Azimuth H or V****Elevation H or V**

Patterns shown are calculated.

**Andrew Corporation**

10500 W. 153rd Street
Orland Park, IL 60462 USA

From North America:
Telephone: 1-800-255-1479
Fax: 1-800-349-5444

International:
Telephone: +1-708-873-2307
Fax: +1-708-349-5444

Customer Support Center

From North America:
Telephone: 1-800-255-1479
Fax: 1-800-349-5444

International:
Telephone: +1-708-873-2307
Fax: +1-708-349-5444

Internet

<http://www.andrew.com>

On-Line Document Center

• view • e-mail • fax • print
One e-source for information
<http://www.andrew.com>

Fax-On-Demand

From North America:
1-800-861-1700
International:
+1-708-873-3614