



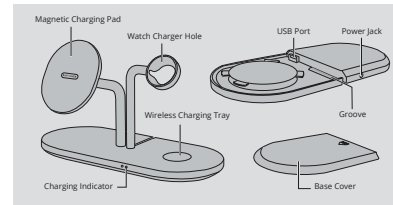
Model: RP-WC013

RAVPower 7.5W 3 In 1 Wireless Charger

User Manual



WHAT'S IN THE BOX

7.5W Wireless
Charger

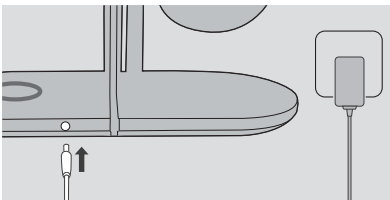
User Manual

Thank You
Card

USING YOUR WIRELESS CHARGER



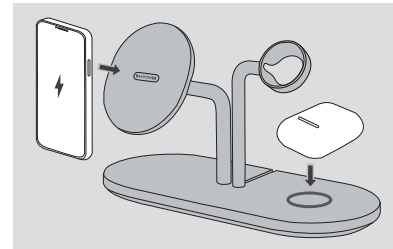
1. You can only charge the device with the included power adapter. Power adapters lower than 12V are not compatible.
2. Phone cases thicker than 0.2inch/0.5cm will not be detected. Remove it before charging.



Connect the device to the power supply with the power adapter.

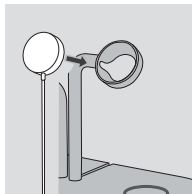
Charge your device

AirPods/iPhone:

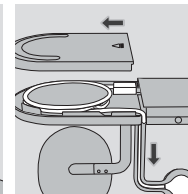


- Charge your AirPods on the wireless charging tray.
- Charge your iPhone on the magnetic charging pad or the wireless charging tray.

Apple Watch:



- 1) Insert your original Apple Watch magnetic charger (NOT INCLUDED) into the hole completely.



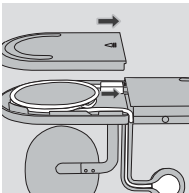
- 2) Open the base cover and place the cable into the slot along the groove.

RAVPOWER
www.ravpower.comE-MAIL:
support@ravpower.com

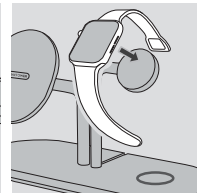
MANUFACTURER

Manufacturer: Shenzhen NearbyExpress Technology Development Co., Ltd.
Address: Floor 7, Building E, Galaxy World Phase II, Shenzhen, China

MADE IN CHINA



3) Insert the USB plug into the interface correctly and close the base cover.



4) Place your Apple Watch on the watch charger.

SPECIFICATIONS

Input	19V \approx 1.47A, 28W Max
Wireless Output	The output of iPhone 12 series: 7.5W The output power of AirPods: 3W The external output power of Apple Watch: 3W
Dimensions	111.5 x 69 x 12.3mm/ 4.4 x 2.7 x 0.5in
Net Weight	270g

IMPORTANT SAFETY INSTRUCTIONS

WARNING – When using this product, basic precautions should always be followed, including the following:

- Read all the instructions before use.
- Avoid dropping.
- Do not disassemble.
- Do not expose to liquids.
- Do not use if it is damaged or modified.
- Do not expose to fire or extreme temperatures.
- Use the included original RAVPower adapter only.
- Dispose as per local law and regulations.

WARRANTY

	<ul style="list-style-type: none">• 18 Month Warranty.• Life-time Support.
	<p>This warranty is void if the defect is caused by:</p> <ul style="list-style-type: none">• Damage caused by force majeure.• Accidental damage, misuse, abuse, neglect.• Improper repair or alteration by unauthorized persons.• Expired warranty period.

FCC Compliance

NOTE: This equipment has been tested and found to comply with the limits for a Class B digital device, pursuant to part 15 of the FCC Rules. These limits are designed to provide reasonable protection against harmful interference in a residential installation. This equipment generates uses and can radiate radio frequency energy and, if not installed and used in accordance with the instructions, may cause harmful interference to radio communications. However, there is no guarantee that interference will not occur in a particular installation. If this equipment does cause harmful interference to radio or television reception, which can be determined by turning the equipment off and on, the user is encouraged to try to correct the interference by one or more of the following measures:

- Reorient or relocate the receiving antenna.
- Increase the separation between the equipment and receiver.
- Connect the equipment into an outlet on a circuit different from that to which the receiver is connected.
- Consult the dealer or an experienced radio/TV technician for help.

Changes or modifications not expressly approved by the party responsible for compliance could void the user's authority to operate the equipment.

This device complies with Part 15 of the FCC Rules. Operation is subject to the following two conditions:
(1) this device may not cause harmful interference, and
(2) this device must accept any interference received, including interference that may cause undesired operation.

FCC Radiation Exposure Statement

This equipment complies with FCC radiation exposure limits set forth for an uncontrolled environment. This equipment shall be installed and operated with minimum distance 20cm between the radiator & body.

WEEE Compliance

DO not to dispose of product as unsorted municipal waste and to collect such WEEE separately, for proper treatment, recovery and recycling, please take this product(s) to designated collection points where it will be accepted free of charge. Please contact your local authority for further details of your nearest designated collection station.