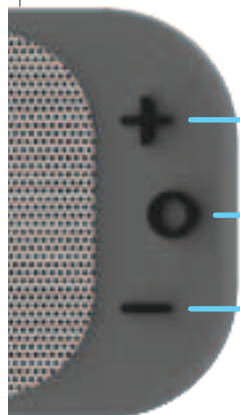


90mm

90mm

100mm

Activo Controls



+ Button

Single Press: Next Song
Hold: Volume Up

O Button

Single Press: Play/Pause Song
Hold: Turn Activo On/Off

- Button

Single Press: Previous Song
Hold: Volume Down

Built-in Magnets

Activo has magnets built into the bottom underneath the silicone outer. You can stick Activo to metallic surfaces such as your fridge, the hood of your car, etc.

Technical Specs

Battery Capacity: 600mAh
Input: 5V/400mA
Speaker Wattage: 5-watts
Bluetooth range: approx. 30 ft
Playtime: 6+ hours
Water Resistancy Rating: IPX6

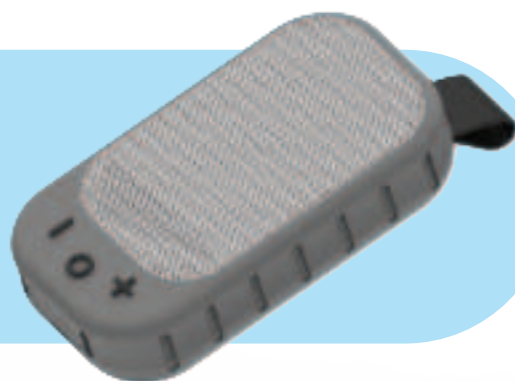
Designed by POWERSTICK.COM in Canada.
Made in China.



What is Activo?

Activo is a portable Bluetooth® 5-watt speaker that was designed to go on all your adventures with you.

It features a passive radiator for strong bass, IPX6 water resistancy, shockproof rubberized silicone outer, and has built-in magnets to attach to metallic objects. The robust strap also allows you to attach Activo to a carabiner to be easily accessible while on your treks.



Charging Activo

Activo is built to be water-resistant and the charging port is hidden behind a water-tight silicone plug. Use your finger to pull out the plug. Plug in the included USB-C charging cable into Activo and the USB-A side to a suitable power source. Always make sure plug is securely re-inserted after charging to maintain water resistancy.

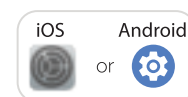


Pairing your Activo

1. Press and hold the O button on Activo to turn it on. You will hear a tone. The Indicator Light will begin flashing red and blue. You are now in Pairing Mode.

2. Go to your phone/device Settings. Find your Bluetooth settings.

(Note: if you are having trouble, please refer to your devices support manual.)



3. You should see Activo listed in the list of nearby Bluetooth devices. If you do not see Activo, make sure that you are in Pairing Mode (Indicator Light will flash red and blue just under the O button).

4. Tap on the device named Activo to pair by Bluetooth. Once paired, you will hear a notification indicating a successful pairing and the Indicator Light will flash green.

5. Go ahead and play your favorite tunes on Activo!

6. When you're done enjoying your music, press and hold the O button until it turns off.

(Note: to pair Activo with another device, you must first disconnect any devices currently paired by either: 1) turning off the first devices Bluetooth, 2) forgetting Activo as a paired device, or 3) not having the paired device within range.)

90mm

90mm

90mm

100mm

FCC Caution.

This device complies with part 15 of the FCC Rules. Operation is subject to the following two conditions:

- (1) This device may not cause harmful interference, and
- (2) this device must accept any interference received, including interference that may cause undesired operation.

Any Changes or modifications not expressly approved by the party responsible for compliance could void the user's authority to operate the equipment.

Note: This equipment has been tested and found to comply with the limits for a Class B digital device, pursuant to part 15 of the FCC Rules. These limits are designed to provide reasonable protection against harmful interference in a residential installation. This equipment generates uses and can radiate radio frequency energy and, if not installed and used in accordance with the instructions, may cause harmful interference to radio communications. However, there is no guarantee that interference will not occur in a particular installation. If this equipment does cause harmful interference to radio or television reception, which can be determined by turning the equipment off and on, the user is encouraged to try to correct the interference by one or more of the following measures:

- Reorient or relocate the receiving antenna.
- Increase the separation between the equipment and receiver.
- Connect the equipment into an outlet on a circuit different from that to which the receiver is connected.
- Consult the dealer or an experienced radio/TV technician for help.

The device has been evaluated to meet general RF exposure requirement. The device can be used in portable exposure condition without restriction.