



REPORT No.: SZ22060386S01

TEST REPORT

APPLICANT : Hot Pepper Mobile Inc.
PRODUCT NAME : Feature Phone
MODEL NAME : HPPL62A
BRAND NAME : Hot Pepper
FCC ID : 2A33N-L62A
STANDARD(S) : FCC 47 CFR Part 2(2.1093)
IEEE 1528-2013
RECEIPT DATE : 2022-09-06
TEST DATE : 2022-09-19 to 2022-10-19
ISSUE DATE : 2022-11-07

Edited by :

Xie Yiyun

Xie Yiyun (Rapporteur)

Approved by:

Shen Junsheng

Shen Junsheng (Supervisor)

NOTE: This document is issued by Shenzhen Morlab Communications Technology Co., the test report shall not be reproduced except in full without prior written permission of the company. The test results apply only to the particular sample(s) tested and to the specific tests carried out which is available on request for validation and information confirmed at our website.





DIRECTORY

1. SAR Results Summary	5
2. Technical Information	6
2.1. Applicant and Manufacturer Information	6
2.2. Equipment under Test (EUT) Description	6
2.3. Environment of Test Site/Conditions	8
3. Specific Absorption Rate (SAR)	9
3.1. Introduction	9
3.2. SAR Definition	9
4. RF Exposure Limits	10
4.1. Uncontrolled Environment	10
4.2. Controlled Environment	10
5. Applied Reference Documents	11
6. SAR Measurement System	12
6.1. E-Field Probe	13
6.2. Data Acquisition Electronics (DAE)	14
6.3. Robot	14
6.4. Measurement Server	15
6.5. Light Beam Unit	15
6.6. Phantom	15
6.7. Device Holder	16
6.8. Data Storage and Evaluation	17
6.9. Test Equipment List	19
7. Tissue Simulating Liquids	21
8. SAR System Verification	23
8.1. Purpose of System Performance check	23
8.2. System Setup	23



8.3. Validation Results	24
9. EUT Testing Position	27
9.1. Handset Reference Points	27
9.2. Positioning for Cheek / Touch	28
9.3. Positioning for Ear / 15° Tilt	28
9.4. SAR Evaluation near the Mouth/Jaw Regions of the Phantom	29
9.5. Body-worn Configurations	29
9.6. Hotspot Mode Exposure Position Conditions	30
10. Measurement Procedures	31
10.1. Spatial Peak SAR Evaluation	31
10.2. Power Reference Measurement	32
10.3. Area Scan Procedures	32
10.4. Zoom Scan Procedures	32
10.5. SAR Averaged Methods	33
10.6. Power Drift Monitoring	33
11. SAR Test Procedure	34
11.1. General Scan Requirements	34
11.2. Test Procedure	35
11.3. Description of Interpolation/Extrapolation Scheme	35
11.4. Wireless Router	35
12. SAR Test Configuration	37
13. Conducted Power List	46
14. Hotspot Mode Evaluation Procedure	46
15. Block Diagram of the Tests to be Performed	48
15.1. Head	48
15.2. Body	49
16. Test Results List	50
16.1. Test Guidance	50



16.2. Head SAR Data	52
16.3. Body SAR Data	56
16.4. Repeated SAR Assessment	62
17. Simultaneous Transmission Evaluation	64
17.1. Simultaneous Transmission Consideration	64
17.2. Simultaneous Transmission Analysis	65
18. Uncertainty Assessment	69
Annex A General Information	70
Annex B Test Setup Photos	
Annex C Plots of System Performance Check	
Annex D Plots of Maximum SAR Test Results	
Annex E Conducted Power	
Annex F DASY Calibration Certificate	

Changed History		
Version	Date	Reason for Change
1.0	2022-11-07	First edition

1. SAR Results Summary

The maximum results of Specific Absorption Rate (SAR) found during test as bellows:

<Highest Reported SAR Summary>

Frequency Band		Highest SAR Summary			
		Head (Gap 0mm)	Body-worn (Gap 10mm)	Hotspot (Gap 10mm)	Extremity (Gap 0mm)
		1g SAR (W/kg)			10g SAR (W/kg)
GSM	GSM850	0.694	0.829	0.829	N/A
	GSM1900	0.829	1.177	1.177	N/A
WCDMA	WCDMA II	0.517	1.100	1.100	N/A
	WCDMA IV	0.396	0.908	0.908	N/A
	WCDMA V	0.719	1.142	1.142	N/A
LTE	LTE Band 5	0.572	1.174	1.174	N/A
	LTE Band 12	1.084	1.189	1.189	N/A
	LTE Band 25/2	0.512	1.108	1.108	N/A
	LTE Band 26	0.509	1.182	1.182	N/A
	LTE Band 41	0.405	1.115	1.115	N/A
	LTE Band 66/4	0.473	1.120	1.120	N/A
	LTE Band 71	0.520	0.786	0.786	N/A
WLAN	2.4GHz WLAN	0.311	0.093	0.093	N/A
2.4GHz Band	Bluetooth	N/A	0.011	0.011	N/A

Highest Simultaneous Transmission SAR _{1g} (W/Kg):	1.395 W/kg	Limit(W/kg): 1.6 W/kg
--	------------	-----------------------

Note:

- For FDD-LTE Band 2/4 is full covered by FDD-LTE Band 25/66, therefore only FDD-LTE Band 25/66 was tested.
- This device is in compliance with Specific Absorption Rate (SAR) for general population or uncontrolled exposure limits (1.6W/kg as averaged over any 1 gram of tissue; specified in FCC 47 CFR part 1 (1.1310) and IEEE C95.1-1991), and had been tested in accordance with the measurement methods and procedures specified in IEEE 1528-2013 and FCC KDB publications.
- When the test result is a critical value, we will use the measurement uncertainty give the judgment result based on the 95% confidence intervals.



2. Technical Information

Note: Provide by applicant.

2.1. Applicant and Manufacturer Information

Applicant:	Hot Pepper Mobile Inc.
Applicant Address:	350 10th Ave 1000 Ste San Diego CA 92101-8705
Manufacturer:	Hot Pepper Mobile Inc.
Manufacturer Address:	350 10th Ave 1000 Ste San Diego CA 92101-8705

2.2. Equipment under Test (EUT) Description

Product Name:	Feature Phone
EUT IMEI:	358371950002322
Hardware Version:	AA30_P2
Software Version:	HPP-L62A-1.0.11
Frequency Bands:	GSM 850: 824 MHz ~ 849 MHz GSM 1900: 1850 MHz ~ 1910 MHz WCDMA Band II: 1850 MHz ~ 1910 MHz WCDMA Band IV: 1710 MHz ~ 1755 MHz WCDMA Band V: 824 MHz ~ 849 MHz LTE Band 2: 1850 MHz ~ 1910 MHz LTE Band 4: 1710 MHz ~ 1755 MHz LTE Band 5: 824 MHz ~ 849 MHz LTE Band 12: 699 MHz ~ 716 MHz LTE Band 25: 1850 MHz ~ 1915 MHz LTE Band 26: 814 MHz ~ 849 MHz LTE Band 41: 2496 MHz ~ 2690 MHz LTE Band 66: 1710 MHz ~ 1780 MHz LTE Band 71: 663 MHz ~ 698 MHz WLAN 2.4GHz: 2412 MHz ~ 2462 MHz Bluetooth: 2402 MHz ~ 2480 MHz
Modulation Mode:	GSM/GPRS: GMSK EDGE: 8PSK WCDMA: QPSK, 16QAM LTE: QPSK, 16QAM 802.11b: DSSS 802.11g/n-HT20/HT40: OFDM BR+EDR: GFSK(1Mbps), $\pi/4$ -DQPSK(2Mbps), 8-DPSK(3Mbps)



	Bluetooth LE: GFSK(1Mbps, 2Mbps)
Multi-slot Class:	GPRS: Multi-slot Class12 EDGE: Multi-slot Class 12
Operation Class:	Class B
VoLTE Mode:	Support
VoWi-Fi Mode:	Support
Hotspot Mode:	Support
Antenna Type:	WWAN: Fixed Internal Antenna WLAN: PIFA Antenna Bluetooth: PIFA Antenna
SIM Cards Description:	GSM+WCDMA+LTE

Note: For more detailed description, please refer to specification or user manual supplied by the applicant and/or manufacturer.

2.3. Environment of Test Site/Conditions

Normal Temperature (NT):	20-25 °C
Relative Humidity:	30-75 %
Air Pressure:	980-1020 hPa

Test Frequency:	GSM 850MHz/1900MHz WCDMA Band II/IV/V FDD-LTE Band 2/4/5/12/25/26/66/71 TDD-LTE Band 41 WLAN 2.4GHz Bluetooth
Operation Mode:	Call established
Power Level:	GSM 850 MHz Maximum output power(level 5) GSM 1900MHz Maximum output power(level 0) WCDMA Band II/IV/V (All Up Bits) FDD-LTE Band 2/4/5/12/25/26/66/71 (Maximum output power) TDD-LTE Band 41 (Maximum output power) WLAN 2.4GHz Bluetooth

During SAR test, EUT is in Traffic Mode (Channel Allocated) at Normal Voltage Condition. A communication link is set up with a System Simulator (SS) by air link, and a call is established.

The EUT shall use its internal transmitter. The antenna(s), battery and accessories shall be those specified by the Factory. The EUT battery must be fully charged and checked periodically during the test to ascertain uniform power output. If a wireless link is used, the antenna connected to the output of the base station simulator shall be placed at least 50 cm away from the handset.

The signal transmitted by the simulator to the antenna feeding point shall be lower than the output power level of the handset by at least 35 dB.

3. Specific Absorption Rate (SAR)

3.1. Introduction

SAR is related to the rate at which energy is absorbed per unit mass in an object exposed to a radio field. The SAR distribution in a biological body is complicated and is usually carried out by experimental techniques or numerical modeling. The standard recommends limits for two tiers of groups, occupational or controlled and general population or uncontrolled, based on a person's awareness and ability to exercise control over his or her exposure. In general, occupational or controlled exposure limits are Middle than the limits for general population or uncontrolled.

3.2. SAR Definition

The SAR definition is the time derivative (rate) of the incremental energy (dW) absorbed by(dissipated in) an incremental mass (dm) contained in a volume element (dv) of a given density. (ρ). The equation description is as below:

$$SAR = \frac{d}{dt} \left(\frac{dW}{dm} \right) = \frac{d}{dt} \left(\frac{dW}{\rho dv} \right)$$

SAR is expressed in units of Watts per kilogram (W/kg).

SAR measurement can be either related to the temperature elevation in tissue by,

$$SAR = C \left(\frac{\delta T}{\delta t} \right)$$

Where C is the specific head capacity, δT is the temperature rise and δt the exposure duration, or related to the electrical field in the tissue by

$$SAR = \frac{\sigma |E|^2}{\rho}$$

Where σ is the conductivity of the tissue, ρ is the mass density of the tissue and $|E|$ is the rmselectrical field strength.

However for evaluating SAR of low power transmitter, electrical field measurement is typically applied.



4. RF Exposure Limits

4.1. Uncontrolled Environment

Uncontrolled Environments are defined as locations where there is the exposure of individuals who have no knowledge or control of their exposure. The general population/uncontrolled exposure limits are applicable to situations in which the general public may be exposed or in which persons who are exposed as a consequence of their employment may not be made fully aware of the potential for exposure or cannot exercise control over their exposure. Members of the general public would come under this category when exposure is not employment-related; for example, in the case of a wireless transmitter that exposes persons in its vicinity.

4.2. Controlled Environment

Controlled Environments are defined as locations where there is exposure that may be incurred by persons who are aware of the potential for exposure, (i.e. as a result of employment or occupation). In general, occupational/controlled exposure limits are applicable to situations in which persons are exposed as a consequence of their employment, who have been made fully aware of the potential for exposure and can exercise control over their exposure. The exposure category is also applicable when the exposure is of a transient nature due to incidental passage through a location where the exposure levels may be higher than the general population/uncontrolled limits, but the exposed person is fully aware of the potential for exposure and can exercise control over his or her exposure by leaving the area or by some other appropriate means.

Limits for General Population/Uncontrolled Exposure (W/kg)

Type Exposure	Uncontrolled Environment Limit
Spatial Peak SAR (1g cube tissue for head and trunk)	1.6 W/kg
Spatial Peak SAR (10g cube tissue for limbs)	4.0 W/kg
Spatial Peak SAR (1g cube tissue for whole body)	0.08 W/kg

Note:

1. Occupational/Uncontrolled Environments are defined as locations where there is exposure that may be incurred by people who are aware of the potential for exposure (i.e. as a result of employment or occupation).
2. Whole-Body SAR is averaged over the entire body, partial-body SAR is averaged over any 1gram of tissue defined as a tissue volume in the shape of a cube. SAR for hands, wrists, feet and ankles is averaged over any 10 grams of tissue defined as a tissue volume in the shape of a cube.

5. Applied Reference Documents

Leading reference documents for testing:

Identity	Document Title	Method Determination /Remark
FCC 47CFR Part 2(2.1093)	Radio Frequency Radiation Exposure Evaluation: Portable Devices	No deviation
IEEE 1528-2013	IEEE Recommended Practice for Determining the Peak Spatial-Average Specific Absorption Rate (SAR) in the Human Head from Wireless Communications Devices: Measurement Techniques	No deviation
KDB 447498 D04v01	General RF Exposure Guidance	No deviation
KDB 248227 D01v02r02	SAR Measurement Procedures for 802.11 Transmitters	No deviation
KDB 865664 D01v01r04	SAR Measurement 100 MHz to 6 GHz	No deviation
KDB 865664 D02v01r02	RF Exposure Reporting	No deviation
KDB 648474 D04v01r03	Handset SAR	No deviation
KDB 941225 D01v03r01	3G SAR MEAUREMENT PROCEDURES	No deviation
KDB 941225 D05v02r05	SAR Evaluation Consideration for LTE Devices	No deviation
KDB 941225 D06v02r01	SAR Evaluation Procedures For Portable Devices With Wireless Router Capabilities	No deviation
<p>Note 1: The test item is not applicable.</p> <p>Note 2: Additions to, deviation, or exclusions from the method shall be judged in the "method determination" column of add, deviate or exclude from the specific method shall be explained in the "Remark" of the above table.</p>		

6. SAR Measurement System



Fig 6.1 SPEAG DASY System Configurations

The DASY system for performance compliance tests is illustrated above graphically. This system consists of the following items:

- A standard high precision 6-axis robot with controller, a teach pendant and software.
- A data acquisition electronic (DAE) attached to the robot arm extension.
- A dosimetric probe equipped with an optical surface detector system.
- The electro-optical converter (ECO) performs the conversion between optical and electrical signals
- A measurement server performs the time critical tasks such as signal filtering, control of the robot operation and fast movement interrupts.
- A probe alignment unit which improves the accuracy of the probe positioning.
- A computer operating Windows XP.
- DASY software.
- Remote control with teach pendant and additional circuitry for robot safety such as warning lamps, etc.
- The SAM twin phantom.
- A device holder.
- Tissue simulating liquid.
- Dipole for evaluating the proper functioning of the system.
- Some of the components are described in details in the following sub-sections.

6.1. E-Field Probe

The SAR measurement is conducted with the dosimetric probe (manufactured by SPEAG). The probe is specially designed and calibrated for use in liquid with high permittivity. The dosimetric probe has special calibration in liquid at different frequency. This probe has a built in optical surface detection system to prevent from collision with phantom.

➤ E-Field Probe Specification

<ES3DV3 Probe>

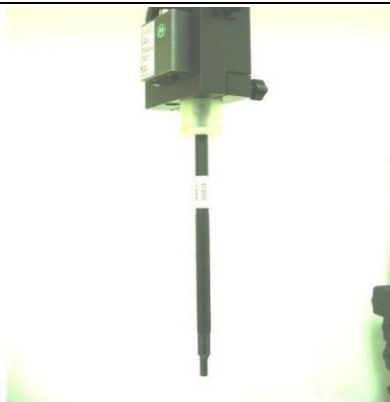
Construction	Symmetrical design with triangular core Built-in optical fiber for surface detection system. Built-in shielding against static charges. PEEK enclosure material (resistant to organic solvents, e.g., DGBE)	
Frequency	10 MHz to 3 GHz; Linearity: ± 0.2 dB	
Directivity	± 0.2 dB in HSL (rotation around probe axis) ± 0.4 dB in HSL (rotation normal to probe axis)	
Dynamic Range	5 μ W/g to 100 mW/g; Linearity: ± 0.2 dB	
Dimensions	Overall length: 330 mm (Tip: 16 mm) Tip diameter: 6.8 mm (Body: 12 mm) Distance from probe tip to dipole centers: 2.7 mm	

Fig 6.2 Photo of ES3DV3

<EX3DV4 Probe>


Construction	Symmetrical design with triangular core Built-in shielding against static charges PEEK enclosure material (resistant to organic solvents, e.g., DGBE)	
Frequency	10 MHz to 6 GHz; Linearity: ± 0.2 dB	
Directivity	± 0.3 dB in HSL (rotation around probe axis) ± 0.5 dB in tissue material (rotation normal to probe axis)	
Dynamic Range	10 μ W/g to 100 mW/g; Linearity: ± 0.2 dB	
Dimensions	Overall length: 330 mm (Tip: 20 mm) Tip diameter: 2.5 mm (Body: 12 mm) Typical distance from probe tip to dipole centers: 1 mm	

Fig 6.3 Photo of EX3DV4

➤ E-Field Probe Calibration

Each probe needs to be calibrated according to a dosimetric assessment procedure with accuracy better than $\pm 10\%$. The spherical isotropy shall be evaluated and within ± 0.25 dB. The sensitivity parameters (NormX, NormY, and NormZ), the diode compression parameter (DCP) and the conversion factor (ConvF) of the probe are tested. The calibration data can be referred to appendix C of this report.

6.2. Data Acquisition Electronics (DAE)

The data acquisition electronics (DAE) consists of a highly sensitive electrometer-grade preamplifier with auto-zeroing, a channel and gain-switching multiplexer, a fast 16 bit AD-converter and a command decoder and control logic unit. AD-converter and a command decoder and control logic unit. Transmission to the measurement server is accomplished through an optical downlink for data and status information as well as an optical uplink for commands and the clock. The input impedance of the DAE is 200 MOhm; the inputs are symmetrical and floating. Common mode rejection is above 80 dB.



Fig 6.4 Photo of DAE

6.3. Robot

The SPEAG DASY system uses the high precision robots (DASY4: RX90BL; DASY5: TX90XL) type from Stäubli SA (France). For the 6-axis controller system, the robot controller version (DASY4: CS7MB; DASY5: CS8c) from Stäubli is used. The Stäubli robot series have many features that are important for our application:

High precision (repeatability ± 0.035 mm)

High reliability (industrial design)

Jerk-free straight movements

Low ELF interference (the closed metallic construction shields against motor control fields)



Fig 6.5 Photo of DASY5

6.4. Measurement Server

The measurement server is based on a PC/104 CPU board with CPU (DASY4: 166 MHz, Intel Pentium; DASY5: 400 MHz, Intel Celeron), chip disk (DASY4: 32 MB; DASY5: 128 MB), RAM (DASY4: 64 MB, DASY5: 128 MB). The necessary circuits for communication with the DAE electronic box, as well as the 16 bit AD converter system for optical detection and digital I/O interface are contained on the DASY I/O board, which is directly connected to the PC/104 bus of the CPU board. The measurement server performs all the real-time data evaluation for field measurements and surface detection, controls robot movements and handles safety operations.



Fig 6.6 Photo of Server for DASY5

6.5. Light Beam Unit

The light beam switch allows automatic "tooling" of the probe. During the process, the actual position of the probe tip with respect to the robot arm is measured, as well as the probe length and the horizontal probe offset. The software then corrects all movements, such that the robot coordinates are valid for the probe tip.

The repeatability of this process is better than 0.1 mm. If a position has been taught with an aligned probe, the same position will be reached with another aligned probe within 0.1 mm, even if the other probe has different dimensions. During probe rotations, the probe tip will keep its actual position.



Fig. 6.7 Photo of Light Beam

6.6. Phantom

<SAM Twin Phantom>

Shell Thickness	2 ± 0.2 mm (sagging: <1%) Center ear point: 6 ± 0.2 mm
Filling Volume	Approx. 25 liters
Dimensions	Length: 1000 mm; Width: 500 mm; Height: adjustable feet
Measurement Areas	Left Head, Right Head, Flat Phantom



Fig. 6.8 Photo of SAM Phantom

The bottom plate contains three pair of bolts for locking the device holder. The device holder positions are adjusted to the standard measurement positions in the three sections. A white cover is provided to tap the phantom during off-periods to prevent water evaporation and changes in the liquid parameters. On the phantom top, three reference markers are provided to identify the phantom position with respect to the robot.

6.7. Device Holder

<Device Holder for SAM Twin Phantom>

The SAR in the phantom is approximately inversely proportional to the square of the distance between the source and the liquid surface. For a source at 5 mm distance, a positioning uncertainty of ± 0.5 mm would produce a SAR uncertainty of ± 20 %. Accurate device positioning is therefore crucial for accurate and repeatable measurements. The positions in which the devices must be measured are defined by the standards.

The DASY device holder is designed to cope with different positions given in the standard. It has two scales for the device rotation (with respect to the body axis) and the device inclination (with respect to the line between the ear reference points). The rotation center for both scales is the ear reference point (EPR). Thus the device needs no repositioning when changing the angles.

The DASY device holder is constructed of low-loss POM material having the following dielectric parameters: relative permittivity $\epsilon = 3$ and loss tangent $\delta = 0.02$. The amount of dielectric material has been reduced in the closest vicinity of the device, since measurements have suggested that the influence of the clamp on the test results could thus be lowered.

<Laptop Extension Kit>

The extension is lightweight and made of POM, acrylic glass and foam. It fits easily on the upper part of the mounting device in place of the phone positioned. The extension is fully compatible with the SAM Twin and ELI phantoms.



Fig 6.9 Device Holder



Fig 6.10 Laptop Extension Kit

6.8. Data Storage and Evaluation

➤ Data Storage

The DASY software stores the assessed data from the data acquisition electronics as raw data (in microvolt readings from the probe sensors), together with all the necessary software parameters for the data evaluation (probe calibration data, liquid parameters and device frequency and modulation data) in measurement files. The post-processing software evaluates the desired unit and format for output each time the data is visualized or exported. This allows verification of the complete software setup even after the measurement and allows correction of erroneous parameter settings. For example, if a measurement has been performed with an incorrect crest factor parameter in the device setup, the parameter can be corrected afterwards and the data can be reevaluated.

The measured data can be visualized or exported in different units or formats, depending on the selected probe type (e.g., [V/m], [A/m], [mW/g]). Some of these units are not available in certain situations or give meaningless results, e.g., a SAR-output in a non-lose media, will always be zero. Raw data can also be exported to perform the evaluation with other software packages.

➤ Data Evaluation

The DASY post-processing software (SEMCAD) automatically executes the following procedures to calculate the field units from the microvolt readings at the probe connector. The parameters used in the evaluation are stored in the configuration modules of the software.

Probe parameters:	- Sensitivity	$\text{Norm}_i, a_{i0}, a_{i1}, a_{i2}$
	- Conversion factor	ConvF_i
	- Diode compression point	dcpi
Device parameters:	- Frequency	f
	- Crest factor	cf
Media parameters:	- Conductivity	σ
	- Density	ρ

These parameters must be set correctly in the software. They can be found in the component documents or they can be imported into the software from the configuration files issued for the DASY components. In the direct measuring mode of the multi-meter option, the parameters of the actual system setup are used. In the scan visualization and export modes, the parameters stored in the corresponding document files are used.

The first step of the evaluation is a linearization of the filtered input signal to account for the compression characteristics of the detector diode. The compensation depends on the input signal, the diode type and the DC-transmission factor from the diode to the evaluation electronics. If the



exciting field is pulsed, the crest factor of the signal must be known to correctly compensate for peak power.

The formula for each channel can be given as:

$$V_i = U_i + U_i^2 \times \frac{cf}{dcp_i}$$

With V_i = compensated signal of channel i , ($i = x, y, z$)
 U_i = input signal of channel i , ($i = x, y, z$)
 cf = crest factor of exciting field (DASY parameter)
 dcp_i = diode compression point (DASY parameter)

From the compensated input signals, the primary field data for each channel can be evaluated:

$$\text{E-field Probes: } E_i = \sqrt{\frac{V_i}{\text{Norm}_i \times \text{ConvF}}}$$

$$\text{H-field Probes: } H_i = \sqrt{V_i} \times \frac{a_{i0} + a_{i1} + a_{i2} f^2}{f}$$

With V_i = compensated signal of channel i , ($i = x, y, z$)
 Norm_i = sensor sensitivity of channel i , ($i = x, y, z$), $\mu\text{V}/(\text{V/m})^2$ for E-field
 Probes ConvF = sensitivity enhancement in solution
 a_{ij} = sensor sensitivity factors for H-field probes
 f = carrier frequency [GHz]
 E_i = electric field strength of channel i in V/m
 H_i = magnetic field strength of channel i in A/m

The RSS value of the field components gives the total field strength (Hermitian magnitude):

$$E_{\text{tot}} = \sqrt{E_x^2 + E_y^2 + E_z^2}$$

The primary field data are used to calculate the derived field units.

$$\text{SAR} = E_{\text{tot}}^2 \times \frac{\sigma}{\rho \times 1000}$$

with SAR = local specific absorption rate in mW/g

E_{tot} = total field strength in V/m

σ = conductivity in [mho/m] or [Siemens/m]

ρ = equivalent tissue density in g/cm^3

Note that the density is set to 1, to account for actual head tissue density rather than the density of the tissue simulating liquid.

6.9. Test Equipment List

Manufacturer	Name of Equipment	Type/Model	Serial No./ SW Version	Calibration	
				Last Cal.	Due Date
SPEAG	750MHz System Validation Kit	D750V2	1173	2021.06.21	2024.06.20
SPEAG	900MHz System Validation Kit	D900V2	1d064	2021.12.17	2024.12.16
SPEAG	1800MHz System Validation Kit	D1800V2	2d158	2021.12.17	2024.12.16
SPEAG	2000MHz System Validation Kit	D2000V2	1050	2021.12.18	2024.12.17
SPEAG	2450MHz System Validation Kit	D2450V2	805	2021.12.17	2024.12.16
SPEAG	2600MHz System Validation Kit	D2600V2	1139	2021.06.25	2024.06.24
SPEAG	DOSIMETRIC ASSESSMENT SYSTEM	DASY52	52.10.4.1527	NCR	NCR
SPEAG	Dosimetric E-Field Probe	EX3DV4	7608	2022.01.12	2023.01.11
SPEAG	Data Acquisition Electronics	DAE4	1643	2021.12.30	2022.12.29
SPEAG	SAM Twin Phantom 2	QD 000 P40 CB	TP-1464	NCR	NCR
SPEAG	Phone Positioner	N/A	N/A	NCR	NCR
R&S	Network Emulator	CMW500	165755	2022.02.14	2023.02.13
Agilent	Network Analyzer	E5071B	MY42404762	2022.03.01	2023.02.28
Speag	Dielectric Assessment KIT	DAK-3.5	1279	2021.09.17	2023.09.16
mini-circuits	Amplifier	ZHL-42W+	608501717	NCR	NCR
Agilent	Signal Generator	N5182B	MY53050509	2022.01.07	2023.01.06
Agilent	Power Sensor	N8482A	MY41091706	2021.10.21	2022.10.20
Agilent	Power Meter	E4416A	MY45102093	2021.10.21	2022.10.20
Anritsu	Power Sensor	MA2411B	N/A	2021.10.21	2022.10.20
R&S	Power Meter	NRVD	101066	2021.10.21	2022.10.20
Agilent	Dual Directional Coupler	778D	50422	NA	NA
MCL	Attenuation	351-218-010	N/A	NA	NA
R&S	Spectrum Analyzer	N9030A	MY54170556	2021.10.20	2022.10.19
KTJ	Thermo meter	TA298	N/A	2021.12.21	2022.12.20
SPEAG	Tissue Simulating Liquids	HBBL600-10000V6		24H	

Note:

1. The calibration certificate of DASY can be referred to appendix F of this report.
2. The Insertion Loss calibration of Dual Directional Coupler and Attenuator were characterized via the network analyzer and compensated during system check.
3. The dielectric probe kit was calibrated via the network analyzer, with the specified procedure (calibrated in pure water) and calibration kit (standard) short circuit, before the dielectric



measurement. The specific procedure and calibration kit are provided by Speag.

4. In system check we need to monitor the level on the power meter, and adjust the power amplifier level to have precise power level to the dipole; the measured SAR will be normalized to 1W input power according to the ratio of 1W to the input power to the dipole. For system check, the calibration of the power amplifier is deemed not critically required for correct measurement; the power meter is critical and we do have calibration for it.
5. Attenuator insertion loss is calibrated by the network Analyzer, which the calibration is valid, before system check.
6. N.C.R means No Calibration Requirement.

7. Tissue Simulating Liquids

For SAR measurement of the field distribution inside the phantom, the phantom must be filled with homogeneous tissue simulating liquid to a depth of at least 15cm. For head SAR testing, the liquid height from the ear reference point (ERP) of the phantom to the liquid top surface is larger than 15cm. For body SAR testing, the liquid height from the center of the flat phantom to the liquid top surface is larger than 15cm, which is shown in Fig. 7.1. For body SAR testing, the liquid height from the center of the flat phantom to the liquid top surface is larger than 15 cm, which is shown in Fig. 7.2. The nominal dielectric values of the tissue simulating liquids in the phantom and the tolerance of 5% are listed in below table.



Fig 7.1 Photo of Liquid Height for Head SAR



Fig 7.2 Photo of Liquid Height for Body SAR

The following table gives the recipes for tissue simulating liquids

Frequency (MHz)	Water (%)	Sugar (%)	Cellulose (%)	Salt (%)	Preventol (%)	DGBE (%)	Conductivity (σ)	Permittivity (ϵ_r)
Head								
750	41.1	57.0	0.2	1.4	0.2	0	0.89	41.9
835	40.3	57.9	0.2	1.4	0.2	0	0.90	41.5
1800,1900,2000	55.2	0	0	0.3	0	44.5	1.40	40.0
2450	55.0	0	0	0	0	45.0	1.80	39.2
2600	54.8	0	0	0.1	0	45.1	1.96	39.0
Body								
750	51.7	47.2	0	0.9	0.1	0	0.96	55.5
835	50.8	48.2	0	0.9	0.1	0	0.97	55.2
1800,1900,2000	70.2	0	0	0.4	0	29.4	1.52	53.3
2450	68.6	0	0	0	0	31.4	1.95	52.7
2600	68.1	0	0	0.1	0	31.8	2.16	52.5

Simulating Liquid for 5GHz, Manufactured by SPEAG.

Ingredients	(% by weight)
Water	64~78%
Mineral oil	11~18%
Emulsifiers	9~15%
Additives and Salt	2~3%



Note: Please refer to the validation results for dielectric parameters of each frequency band. The dielectric properties of the tissue simulating liquids were verified prior to the SAR evaluation using a SPEAG Dielectric Assessment KIT and an Agilent Network Analyzer.

Table 1: Dielectric Performance of Tissue Simulating Liquid

Frequency (MHz)	Tissue Type	Liquid Temp.(°C)	Conductivity (σ)	Conductivity Target (σ)	Delta (σ) (%)	Limit (%)	Date
750	HSL	22.1	0.927	0.89	4.16	±5	2022.09.19
900	HSL	22.3	0.976	0.97	0.62	±5	2022.09.18
1800	HSL	22.3	1.417	1.40	1.21	±5	2022.09.25
2000	HSL	22.2	1.439	1.40	2.79	±5	2022.10.10
2450	HSL	22.2	1.834	1.80	1.89	±5	2022.10.18
2600	HSL	22.4	1.948	1.96	-0.61	±5	2022.10.19
Frequency (MHz)	Tissue Type	Liquid Temp.(°C)	Permittivity (ϵ_r)	Permittivity Target (ϵ_r)	Delta (ϵ_r) (%)	Limit (%)	Date
750	HSL	22.1	40.896	41.90	-2.40	±5	2022.09.19
900	HSL	22.3	40.937	41.50	-1.36	±5	2022.09.18
1800	HSL	22.3	40.138	40.00	0.34	±5	2022.09.25
2000	HSL	22.2	40.726	40.00	1.82	±5	2022.10.10
2450	HSL	22.2	39.533	39.20	0.85	±5	2022.10.18
2600	HSL	22.4	39.371	39.00	0.95	±5	2022.10.19

8. SAR System Verification

Each DASY system is equipped with one or more system validation kits. These units, together with the predefined measurement procedures within the DASY software, enable the user to conduct the system performance check and system validation. System validation kit includes a dipole, tripod holder to fix it underneath the flat phantom and a corresponding distance holder.

8.1. Purpose of System Performance check

The system performance check verifies that the system operates within its specifications. System and operator errors can be detected and corrected. It is recommended that the system performance check be performed prior to any usage of the system in order to guarantee reproducible results. The system performance check uses normal SAR measurements in a simplified setup with a well characterized source. This setup was selected to give a high sensitivity to all parameters that might fail or vary over time. The system check does not intend to replace the calibration of the components, but indicates situations where the system uncertainty is exceeded due to drift or failure.

8.2. System Setup

The output power on dipole port must be calibrated to 24 dBm (250 mW) before dipole is connected. In the simplified setup for system evaluation, the DUT is replaced by a calibrated dipole and the power source is replaced by a continuous wave which comes from a signal generator. The calibrated dipole must be placed beneath the flat phantom section of the SAM twin phantom with the correct distance holder. The distance holder should touch the phantom surface with a light pressure at the reference marking and be oriented parallel to the long side of the phantom. The system check verifies that the system operates within its specifications. It is performed daily or before every SAR measurement. The system check uses normal SAR measurements in the flat section of the phantom with a matched dipole at a specified distance. The system verification setup is shown as below.



Fig 8.1 Photo of Dipole Setup

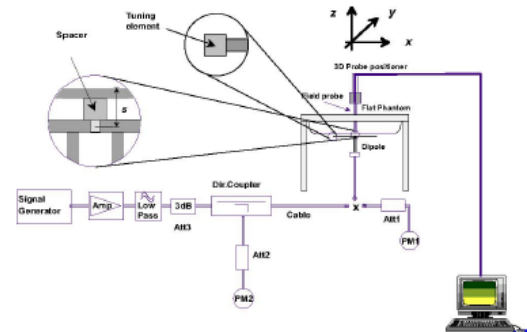


Fig 8.2 System Setup for System Evaluation

8.3. Validation Results

After system check testing, the SAR result will be normalized to 1W forward input power and compared with the reference SAR value derived from validation dipole certificate report. The deviation of system check should be within 10%.

<Validation Setup>

Frequency (MHz)	Tissue Type	Input Power(mW)	Dipole S/N	Probe S/N	DAE S/N
750	HSL	250	D750V3-1173	7608	1643
900	HSL	250	D900V2-1d064	7608	1643
1800	HSL	250	D1800V2-2d158	7608	1643
2000	HSL	250	D2000V2-1050	7608	1643
2450	HSL	250	D2450V2-805	7608	1643
2600	HSL	250	D2600V2-1139	7608	1643

<System Validation>

Frequency (MHz)	Tissue Type	Conductivity (σ)	Permittivity (ϵ_r)	CW Signal Validation		
				Sensitivity	Probe Linearity	Probe Isotropy
750	HSL	0.851	42.43	PASS	PASS	PASS
835	HSL	0.898	41.88	PASS	PASS	PASS
1750	HSL	1.386	39.91	PASS	PASS	PASS
1800	HSL	1.449	41.26	PASS	PASS	PASS
1900	HSL	1.435	39.65	PASS	PASS	PASS
2000	HSL	1.451	39.42	PASS	PASS	PASS
2300	HSL	1.764	38.99	PASS	PASS	PASS
2450	HSL	1.863	38.85	PASS	PASS	PASS
2600	HSL	1.973	38.58	PASS	PASS	PASS
3400	HSL	2.88	38.10	PASS	PASS	PASS
3500	HSL	2.91	37.90	PASS	PASS	PASS
3700	HSL	3.05	37.70	PASS	PASS	PASS
3900	HSL	3.15	37.50	PASS	PASS	PASS
4100	HSL	3.25	37.20	PASS	PASS	PASS
4200	HSL	3.34	37.00	PASS	PASS	PASS
4400	HSL	3.58	36.70	PASS	PASS	PASS
4600	HSL	3.70	36.60	PASS	PASS	PASS
4800	HSL	3.82	36.40	PASS	PASS	PASS
4900	HSL	3.96	36.20	PASS	PASS	PASS



REPORT No.: SZ22060386S01

5250	HSL	4.528	35.32	PASS	PASS	PASS
5600	HSL	4.905	34.89	PASS	PASS	PASS
5750	HSL	5.077	34.28	PASS	PASS	PASS

Frequency (MHz)	Tissue Type	Conductivity (σ)	Permittivity (ϵ_r)	Modulation Signal Validation		
				Mod. Type	Duty Factor	PAR
750	HSL	0.851	42.43	N/A	N/A	N/A
835	HSL	0.898	41.88	GMSK	PASS	N/A
1750	HSL	1.386	39.91	N/A	N/A	N/A
1800	HSL	1.449	41.26	N/A	N/A	N/A
1900	HSL	1.435	39.65	GMSK	PASS	N/A
2000	HSL	1.451	39.42	GMSK	PASS	N/A
2300	HSL	1.764	38.99	OFDM	PASS	PASS
2450	HSL	1.863	38.85	OFDM	PASS	PASS
2600	HSL	1.973	38.58	TDD	PASS	N/A
3400	HSL	2.88	38.10	OFDM	PASS	PASS
3500	HSL	2.91	37.90	OFDM	PASS	PASS
3700	HSL	3.05	37.70	OFDM	PASS	PASS
3900	HSL	3.15	37.50	OFDM	PASS	PASS
4100	HSL	3.25	37.20	OFDM	PASS	PASS
4200	HSL	3.34	37.00	OFDM	PASS	PASS
4400	HSL	3.58	36.70	OFDM	PASS	PASS
4600	HSL	3.70	36.60	OFDM	PASS	PASS
4800	HSL	3.82	36.40	OFDM	PASS	PASS
4900	HSL	3.96	36.20	OFDM	PASS	PASS
5250	HSL	4.528	35.32	OFDM	N/A	PASS
5600	HSL	4.905	34.89	OFDM	N/A	PASS
5750	HSL	5.077	34.28	OFDM	N/A	PASS



<Validation Results>

Date	Frequency (MHz)	Tissue Type	Input Power (mW)	Measured 1g SAR (W/kg)	Targeted 1g SAR (W/kg)	Normalized 1g SAR (W/kg)	Deviation (%)
2022.09.19	750	HSL	250	2.18	8.26	8.72	5.57
2022.09.18	900	HSL	250	2.73	11.20	10.92	-2.50
2022.09.25	1800	HSL	250	10.13	39.20	40.52	3.37
2022.10.10	2000	HSL	250	10.59	41.60	42.36	1.83
2022.10.18	2450	HSL	250	12.88	52.30	51.52	-1.49
2022.10.19	2600	HSL	250	13.64	54.00	54.56	1.04

Date	Frequency (MHz)	Tissue Type	Input Power (mW)	Measured 10g SAR (W/kg)	Targeted 10g SAR (W/kg)	Normalized 10g SAR (W/kg)	Deviation (%)
2022.09.19	750	HSL	250	1.39	5.45	5.56	2.02
2022.09.18	900	HSL	250	1.81	7.19	7.24	0.70
2022.09.25	1800	HSL	250	5.17	20.10	20.68	2.89
2022.10.10	2000	HSL	250	5.37	20.70	21.48	3.77
2022.10.18	2450	HSL	250	5.98	23.90	23.92	0.08
2022.10.19	2600	HSL	250	6.19	24.50	24.76	1.06

Note: System checks the specific test data please see Annex C.

9. EUT Testing Position

This EUT was tested in six different positions. They are right cheek/right tilted/left cheek/left tilted for head, Front/Back of the EUT with phantom 10 mm gap, as illustrated below, please refer to Appendix B for the test setup photos.

9.1. Handset Reference Points

The vertical centre line passes through two points on the front side of the handset – the midpoint of the width w_t of the handset at the level of the acoustic output, and the midpoint of the width w_b of the bottom of the handset.

The horizontal line is perpendicular to the vertical centre line and passes the center of the acoustic output. The horizontal line is also tangential to the handset at point A.

The two lines intersect at point A. Note that for many handsets, point A coincides with the center of the acoustic output; however, the acoustic output may be located elsewhere on the horizontal line.

Also note that the vertical centre line is not necessarily parallel to the front face of the handset, especially for clamshell handsets, handsets with flip covers, and other irregularly shaped handsets.



Fig. 9.1 Illustration for Cheek Position

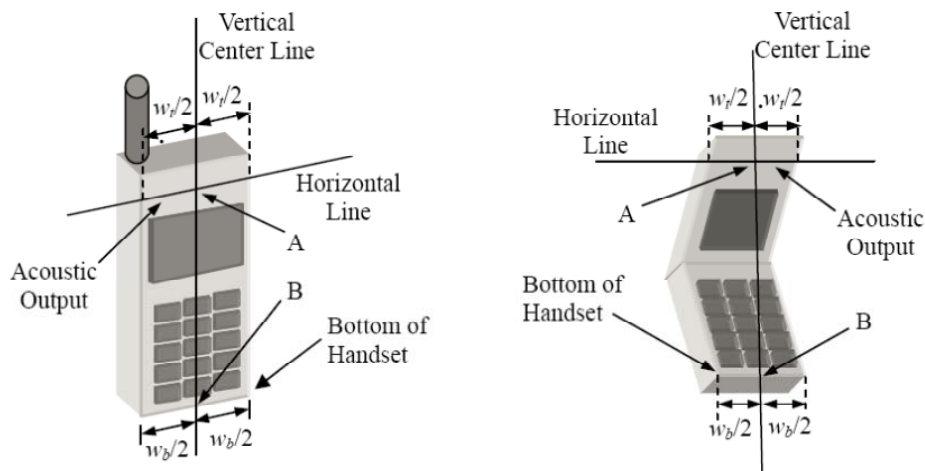


Fig. 9.2 Illustration for Handset Vertical and Horizontal Reference Lines

9.2. Positioning for Cheek / Touch

To position the device with the vertical center line of the body of the device and the horizontal line crossing the center piece in a plane parallel to the sagittal plane of the phantom. While maintaining the device in this plane, align the vertical center line with the reference plane containing the three ear and mouth reference point (M: Mouth, RE: Right Ear and LE: Left Ear) and align the center of the ear piece with the line RE-LE.

To move the device towards the phantom with the ear piece aligned with the line LE-RE until the phone touched the ear. While maintaining the device in the reference plane and maintaining the phone contact with the ear, move the bottom of the phone until any point on the front side is in contact with the cheek of the phantom or until contact with the ear is lost (see below figure)



Fig 9.3 Illustration for Cheek Position

9.3. Positioning for Ear / 15° Tilt

To position the device in the “cheek” position described above.

While maintaining the device the reference plane described above and pivoting against the ear, moves it outward away from the mouth by an angle of 15 degrees or until contact with the ear is lost (see figure below).

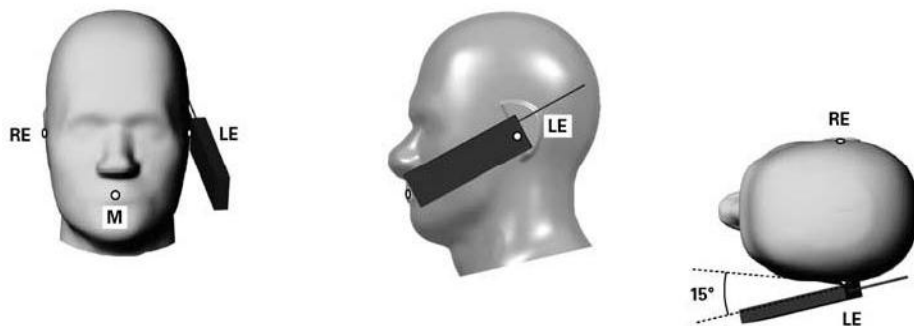


Fig 9.4 Illustration for Tilted Position

9.4. SAR Evaluation near the Mouth/Jaw Regions of the Phantom

Antennas located near the bottom of a phone may require SAR measurements around the mouth and jaw regions of the SAM head phantom. This typically applies to clam-shell style phones that are generally longer in the unfolded normal use positions or to certain older style long rectangular phones.

Under these circumstances, the following procedures apply, adopted from the FCC guidance on SAR handsets document FCC KDB Publication 648474 D04v01r03. The SAR required in these regions of SAM should be measured using a flat phantom. The phone should be positioned with a separation distance of 4 mm between the ear reference point (ERP) and the outer surface of the flat phantom shell. While maintaining this distance at the ERP location, the low (bottom) edge of the phone should be lowered from the phantom to establish the same separation distance between the peak SAR locations identified by the truncated partial SAR distribution measured with the SAM phantom. The distance from the peak SAR location to the phone is determined by the straight line passing perpendicularly through the phantom surface. When it is not feasible to maintain 4 mm separation at the ERP while also establishing the required separation at the peak SAR location, the top edge of the phone will be allowed to touch the phantom with a separation < 4 mm at the ERP. The phone should not be tilted to the left or right while placed in this inclined position to the flat phantom.

9.5. Body-worn Configurations

The body-worn configurations shall be tested with the supplied accessories (belt-clips, holsters, etc.) attached to the device in normal use configuration.

For body-worn and other configurations a flat phantom shall be used which is comprised of material with electrical properties similar to the corresponding tissues.

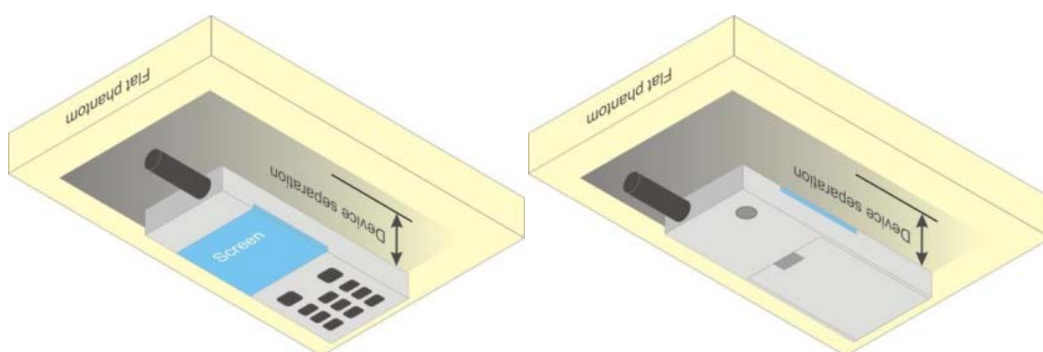


Fig 9.5 Illustration for Body Worn Position

9.6. Hotspot Mode Exposure Position Conditions

For handsets that support hotspot mode operations, with wireless router capabilities and various web browsing functions, the relevant hand and body exposure conditions are tested according to the hotspot SAR procedures in KDB 941225. A test separation distance of 10 mm is required between the phantom and all surfaces and edges with a transmitting antenna located within 25 mm from that surface or edge. When the form factor of a handset is smaller than 9 cm x 5 cm, a test separation distance of 5 mm (instead of 10 mm) is required for testing hotspot mode. When the separation distance required for body-worn accessory testing is larger than or equal to that tested for hotspot mode, in the same wireless mode and for the same surface of the phone, the hotspot mode SAR data may be used to support body-worn accessory SAR compliance for that particular configuration (surface).

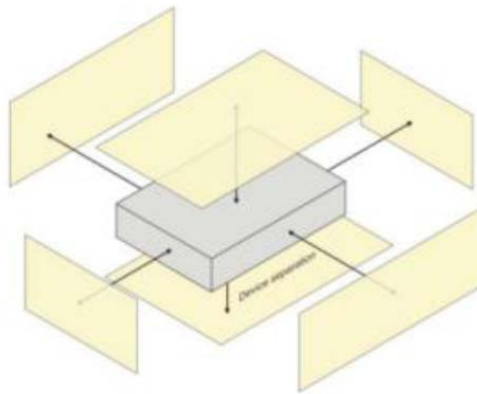


Fig 9.6 Illustration for Hotspot Position

10. Measurement Procedures

The measurement procedures are as follows:

<Conducted power measurement>

- (a) For WWAN power measurement, use base station simulator to configure EUT WWAN transmission in conducted connection with RF cable, at maximum power in each supported wireless interface and frequency band.
- (b) Read the WWAN RF power level from the base station simulator.
- (c) For WLAN/BT power measurement, use engineering software to configure EUT WLAN/BT continuously transmission, at maximum RF power in each supported wireless interface and frequency band.
- (d) Connect EUT RF port through RF cable to the power meter, and measure WLAN/BT output power.

<SAR measurement>

- (a) Use base station simulator to configure EUT WWAN transmission in radiated connection, and engineering software to configure EUT WLAN/BT continuously transmission, at maximum RF power, in the highest power channel.
- (b) Place the EUT in the positions as Appendix D demonstrates.
- (c) Set scan area, grid size and other setting on the DASY software.
- (d) Measure SAR results for the highest power channel on each testing position.
- (e) Find out the largest SAR result on these testing positions of each band.
- (f) Measure SAR results for other channels in worst SAR testing position if the reported SAR of highest power channel is larger than 0.8 W/kg.

According to the test standard, the recommended procedure for assessing the peak spatial-average SAR value consists of the following steps:

- (a) Power reference measurement.
- (b) Area scan.
- (c) Zoom scan.
- (d) Power drift measurement.

10.1. Spatial Peak SAR Evaluation

The procedure for spatial peak SAR evaluation has been implemented according to the test standard. It can be conducted for 1g and 10g, as well as for user-specific masses. The DASY software includes all numerical procedures necessary to evaluate the spatial peak SAR value.

The base for the evaluation is a "cube" measurement. The measured volume must include the 1g and 10g cubes with the highest averaged SAR values. For that purpose, the center of the measured volume is aligned to the interpolated peak SAR value of a previously performed area scan.



The entire evaluation of the spatial peak values is performed within the post-processing engine (SEMCAD). The system always gives the maximum values for the 1g and 10g cubes. The algorithm to find the cube with highest averaged SAR is divided into the following stages:

- (a) Extraction of the measured data (grid and values) from the Zoom Scan.
- (b) Calculation of the SAR value at every measurement point based on all stored data (A/D values and measurement parameters).
- (c) Generation of a high-resolution mesh within the measured volume.
- (d) Interpolation of all measured values from the measurement grid to the high-resolution grid.
- (e) Extrapolation of the entire 3-D field distribution to the phantom surface over the distance from sensor to surface.
- (f) Calculation of the averaged SAR within masses of 1g and 10g.

10.2. Power Reference Measurement

The Power Reference Measurement and Power Drift Measurements are for monitoring the power drift of the device under test in the batch process. The minimum distance of probe sensors to surface determines the closest measurement point to phantom surface. This distance cannot be smaller than the distance of sensor calibration points to probe tip as defined in the probe properties.

10.3. Area Scan Procedures

Area scans are defined prior to the measurement process being executed with a user defined variable spacing between each measurement point (integral) allowing low uncertainty measurements to be conducted. Scans defined for FCC applications utilize a 10mm^2 step integral, with 1mm interpolation used to locate the peak SAR area used for zoom scan assessments.

When an Area Scan has measured all reachable points, it computes the field maxima founding the scanned area, within a range of the global maximum. The range (in dB) is specified in the standards for compliance testing. For example, a 2 dB range is required in IEEE1528-2003.

10.4. Zoom Scan Procedures

Zoom Scans are used to assess the peak spatial SAR values within a cubic averaging volume containing 1 g and 10 g of simulated tissue. A density of 1000 kg/m^3 is used to represent the head and body tissue density and not the phantom liquid density, in order to be consistent with the definition of the liquid dielectric properties, i.e. the side length of the 1g cube is 10mm, with the side



length of the 10 g cube 21,5mm. The zoom scan integer steps can be user defined so as to reduce uncertainty, but normal practice for typical test applications utilize a physical step of 5x5x7 (8mmx8mmx5mm) providing a volume of 32mm in the X & Y axis, and 30mm in the Z axis.

10.5. SAR Averaged Methods

In DASY, the interpolation and extrapolation are both based on the modified Quadratic Sheppard's method. The interpolation scheme combines a least-square fitted function method and a weighted average method which are the two basic types of computational interpolation and approximation.

Extrapolation routines are used to obtain SAR values between the lowest measurement points and the inner phantom surface. The extrapolation distance is determined by the surface detection distance and the probe sensor offset. The uncertainty increases with the extrapolation distance. To keep the uncertainty within 1% for the 1 g and 10 g cubes, the extrapolation distance should not be larger than 5 mm.

10.6. Power Drift Monitoring

All SAR testing is under the DUT install full charged battery and transmit maximum output power. In DASY measurement software, the power reference measurement and power drift measurement procedures are used for monitoring the power drift of DUT during SAR test. Both these procedures measure the field at a specified reference position before and after the SAR testing. The software will calculate the field difference in dB. If the power drift more than 5%, the SAR will be retested.

11. SAR Test Procedure

11.1. General Scan Requirements

Probe boundary effect error compensation is required for measurements with the probe tip closer than half a probe tip diameter to the phantom surface. Both the probe tip diameter and sensor offset distance must satisfy measurement protocols; to ensure probe boundary effect errors are minimized and the higher fields closest to the phantom surface can be correctly measured and extrapolated to the phantom surface for computing 1-g SAR. Tolerances of the post-processing algorithms must be verified by the test laboratory for the scan resolutions used in the SAR measurements, according to the reference distribution functions specified in IEEE Std. 1528-2013.

			≤ 3 GHz	> 3 GHz
Maximum distance from closest measurement point (geometric center of probe sensors) to phantom surface			5 mm \pm 1 mm	$\frac{1}{2} \cdot \delta \cdot \ln(2)$ mm \pm 0.5 mm
Maximum probe angle from probe axis to phantom surface normal at the measurement location			$30^{\circ} \pm 1^{\circ}$	$20^{\circ} \pm 1^{\circ}$
Maximum area scan spatial resolution: Δx_{Area} , Δy_{Area}			≤ 2 GHz: ≤ 15 mm 2 – 3 GHz: ≤ 12 mm	3 – 4 GHz: ≤ 12 mm 4 – 6 GHz: ≤ 10 mm
			When the x or y dimension of the test device, in the measurement plane orientation, is smaller than the above, the measurement resolution must be \leq the corresponding x or y dimension of the test device with at least one measurement point on the test device.	
Maximum zoom scan spatial resolution: Δx_{Zoom} , Δy_{Zoom}			≤ 2 GHz: ≤ 8 mm 2 – 3 GHz: ≤ 5 mm*	3 – 4 GHz: ≤ 5 mm* 4 – 6 GHz: ≤ 4 mm*
Maximum zoom scan spatial resolution, normal to phantom surface	uniform grid: $\Delta z_{Zoom}(n)$		≤ 5 mm	3 – 4 GHz: ≤ 4 mm 4 – 5 GHz: ≤ 3 mm 5 – 6 GHz: ≤ 2 mm
	graded grid	$\Delta z_{Zoom}(1)$: between 1 st two points closest to phantom surface	≤ 4 mm	3 – 4 GHz: ≤ 3 mm 4 – 5 GHz: ≤ 2.5 mm 5 – 6 GHz: ≤ 2 mm
		$\Delta z_{Zoom}(n>1)$: between subsequent points	$\leq 1.5 \cdot \Delta z_{Zoom}(n-1)$ mm	
Minimum zoom scan volume	x, y, z		≥ 30 mm	3 – 4 GHz: ≥ 28 mm 4 – 5 GHz: ≥ 25 mm 5 – 6 GHz: ≥ 22 mm
Note: δ is the penetration depth of a plane-wave at normal incidence to the tissue medium; see IEEE Std 1528-2013 for details.				
* When zoom scan is required and the <i>reported</i> SAR from the <i>area scan based 1-g SAR estimation</i> procedures of KDB Publication 447498 is ≤ 1.4 W/kg, ≤ 8 mm, ≤ 7 mm and ≤ 5 mm zoom scan resolution may be applied, respectively, for 2 GHz to 3 GHz, 3 GHz to 4 GHz and 4 GHz to 6 GHz.				

11.2. Test Procedure

The Following steps are used for each test position

1. Establish a call with the maximum output power with a base station simulator. The connection between the mobile and the base station simulator is established via air interface.
2. Measurement of the local E-field value at a fixed location. This value serves as a reference value for calculating a possible power drift.
3. Measurement of the SAR distribution with a grid of 8 to 16mm * 8 to 16 mm and a constant distance to the inner surface of the phantom. Since the sensors cannot directly measure at the inner phantom surface, the values between the sensors and the inner phantom surface are extrapolated. With these values the area of the maximum SAR is calculated by an interpolation scheme.
4. Around this point, a cube of 30 * 30 * 30 mm or 32 * 32 * 32 mm is assessed by measuring 5 or 8 * 5 or 8*4 or 5 mm. With these data, the peak spatial-average SAR value can be calculated.

11.3. Description of Interpolation/Extrapolation Scheme

The local SAR inside the phantom is measured using small dipole sensing elements inside a probe body. The probe tip must not be in contact with the phantom surface in order to minimize measurements errors, but the highest local SAR will occur at the surface of the phantom.

An extrapolation is using to determinate this highest local SAR values. The extrapolation is based on a fourth-order least-square polynomial fit of measured data. The local SAR value is then extrapolated from the liquid surface with a 1mm step.

The measurements have to be performed over a limited time (due to the duration of the battery) so the step of measurement is high. It could vary between 5 and 8 mm. To obtain an accurate assessment of the maximum SAR averaged over 10 grams and 1 gram requires a very fine resolution in the three dimensional scanned data array.

11.4. Wireless Router

Some battery-operated handsets have the capability to transmit and receive user through simultaneous transmission of WIFI simultaneously with a separate licensed transmitter. The FCC has provided guidance in FCC KDB Publication 941225 D06 v02r01 where SAR test considerations for handsets ($L \times W \geq 9 \text{ cm} \times 5 \text{ cm}$) are based on a composite test separation distance of 10 from the front, back and edges of the device containing transmitting antennas within 2.5cm of their edges,



determined from general mixed use conditions for this type of devices. Since the hotspot SAR results may overlap with the body-worn accessory SAR requirements, the more conservative configurations can be considered, thus excluding some body-worn accessory SAR tests.

When the user enables the personal wireless router functions for the handset, actual operations include simultaneous transmission of both the WIFI transmitter and another licensed transmitter. Both transmitters often do not transmit at the same transmitting frequency and thus cannot be evaluated for SAR under actual use conditions due to the limitations of the SAR assessment probes. Therefore, SAR must be evaluated for each frequency transmission and mode separately and spatially summed with the WIFI transmitter according to FCC KDB Publication 447498 D01v06 publication procedures. The "Portable Hotspot" feature on the handset was NOT activated during SAR assessments, to ensure the SAR measurements were evaluated for a single transmission frequency RF signal at a time.

12. SAR Test Configuration

<GSM Mode>

A summary of these settings are illustrated below:

For GSM850 frequency band, the power control is set to 5 for GSM/GPRS mode (GSMK-CS1) and set to 8 for EDGE mode (MCS5); For GSM1900 frequency band, the power control is set to 0 for GSM/GPRS mode (GSMK-CS1) and set to 2 for EDGE mode (MCS5).

1. Per KDB 447498 D01v06, the maximum output power channel is used for SAR testing and for further SAR test reduction.
2. Per KDB 941225 D01v03r01, SAR test reduction for GSM / GPRS / EDGE modes is determined by the source-based time-averaged output power including tune-up tolerance. The mode with highest specified time-averaged output power should be tested for SAR compliance in the applicable exposure conditions. For modes with the same specified maximum output power and tolerance, the higher number time-slot configuration should be tested. Therefore, the GPRS (4Tx slots) for GSM850/GSM1900 is considered as the primary mode.
3. Other configurations of GSM / GPRS / EDGE are considered as secondary modes.

Timeslot consignations:

Remark:

1. The frame-averaged power is linearly reported the maximum burst averaged power over 8 time slots. The calculated method are shown as below:
The duty cycle "x" of different time slots as below:
1 TX slot is 1/8, 2 TX slots is 2/8, 3 TX slots is 3/8 and 4 TX slots is 4/8
Based on the calculation formula:
Frame-averaged power = Burst averaged power + 10 log (x)
So,
Frame-averaged power (1 TX slot) = Burst averaged power (1 TX slot)– 9.03
Frame-averaged power (2 TX slots) = Burst averaged power (2 TX slots)– 6.02
Frame-averaged power (3 TX slots) = Burst averaged power (3 TX slots)– 4.26
Frame-averaged power (4 TX slots) = Burst averaged power (4 TX slots) – 3.01
2. CS1 coding scheme was used in GPRS conducted power measurements and SAR testing, MCS5 coding scheme was used in EGPRS conducted power measurements and SAR testing (if necessary).

No. of Slots:	Slot 1	Slot 2	Slot 3	Slot 4
Slot Consignation:	1Up4Down	2Up3Down	3Up2Down	4Up1Down
Duty Cycle:	1:8.3	1:4.15	1:2.77	1:2.08
Correct Factor:	-9.03dB	-6.02dB	-4.26dB	-3.01dB

<WCDMA Mode>

Summary of UMTS conducted power measurement:

1. The 3G SAR test reduction procedure is applied, when the maximum output power and tune-up tolerance specified for production units in a secondary mode is $\leq \frac{1}{4}$ dB higher than the primary mode, SAR measurement is not required for the secondary mode.
2. The following tests were conducted according to the test requirements outlines in 3GPP TS 34.121 specification.
3. The procedures in KDB 941225 D01v03r01 are applied for 3GPP Rel. 6 HSPA to configure the device in the required sub-test mode(s) to determine SAR test exclusion.
4. For HSPA+ devices supporting 16 QAM in the uplink, power measurements procedure is according to the configurations in Table C.11.1.4 of 3GPP TS 34.121-1.
5. Per KDB 941225 D01v03r01, RMC 12.2kbps setting is used to evaluate SAR. The maximum output power and tune-up tolerance specified for production units in HSDPA / HSUPA / DC-HSDPA / HSPA+ is $\leq \frac{1}{4}$ dB higher than RMC 12.2Kbps or when the highest reported SAR of the RMC12.2Kbps is scaled by the ratio of specified maximum output power and tune-up tolerance of HSDPA / HSUPA / DC-HSDPA / HSPA+ to RMC12.2Kbps and the adjusted SAR is ≤ 1.2 W/kg, SAR measurement is not required for HSDPA / HSUPA / DC-HSDPA / HSPA+, and according to the following RF output power, the output power results of the secondary modes (HSDPA / HSUPA / DC-HSDPA / HSPA+) are less than $\frac{1}{4}$ dB higher than the primary modes; therefore, SAR measurement is not required for HSDPA / HSUPA / DC-HSDPA / HSPA+.
6. A fixed level power reduction is applied for WCDMA Band II when handset open Hotspot mode, the power reduction triggered.

HSDPA Setup Configuration

Sub-test	β_c	β_d	β_d (SF)	β_c/β_d	$\beta_{hs}^{(1)}$	CM (dB) ⁽²⁾
1	2/15	15/15	64	2/15	4/15	0.0
2	12/15 ⁽³⁾	15/15 ⁽³⁾	64	12/15 ⁽³⁾	24/15	1.0
3	15/15	8/15	64	15/8	30/15	1.5
4	15/15	4/15	64	15/4	30/15	1.5
Note 1: $\Delta_{ACK}, \Delta_{NACK}$ and $\Delta_{CQI} = 8 \Leftrightarrow A_{hs} = \beta_{hs}/\beta_c = 30/15 \Leftrightarrow \beta_{hs} = 30/15 * \beta_c$ Note 2: CM = 1 for $\beta_c/\beta_d = 12/15, \beta_{hs}/\beta_c = 24/15$. Note 3: For subtest 2 the β_c/β_d ratio of 12/15 for the TFC during the measurement period (TF1, TF0) is achieved by setting the signaled gain factors for the reference TFC (TF1, TF1) to $\beta_c = 11/15$ and $\beta_d = 15/15$.						

HSUPA Setup Configuration

Sub-test	β_c	β_d	β_d (SF)	β_c/β_d	$\beta_{hs}^{(1)}$	β_{ec}	β_{ed}	β_{ed} (SF)	β_{ed} (codes)	CM ⁽²⁾ (dB)	MPR (dB)	AG ⁽⁴⁾ Index	E-TFCI
1	11/15 ⁽³⁾	15/15 ⁽³⁾	64	11/15 ⁽³⁾	22/15	209/225	1039/225	4	1	1.0	0.0	20	75
2	6/15	15/15	64	6/15	12/15	12/15	94/75	4	1	3.0	2.0	12	67
3	15/15	9/15	64	15/9	30/15	30/15	$\beta_{ed1}: 47/15$ $\beta_{ed2}: 47/15$	4	2	2.0	1.0	15	92
4	2/15	15/15	64	2/15	4/15	2/15	56/75	4	1	3.0	2.0	17	71
5	15/15 ⁽⁴⁾	15/15 ⁽⁴⁾	64	15/15 ⁽⁴⁾	30/15	24/15	134/15	4	1	1.0	0.0	21	81

Note 1: Δ_{ACK} , Δ_{NACK} and $\Delta_{CQI} = 8 \Leftrightarrow A_{hs} = \beta_{hs}/\beta_c = 30/15 \Leftrightarrow \beta_{hs} = 30/15 * \beta_c$.

Note 2: CM = 1 for $\beta_c/\beta_d = 12/15$, $\beta_{hs}/\beta_c = 24/15$. For all other combinations of DPDCH, DPCCH, HS-DPCCH, E-DPDCH and E-DPCCH the MPR is based on the relative CM difference.

Note 3: For subtest 1 the β_c/β_d ratio of 11/15 for the TFC during the measurement period (TF1, TF0) is achieved by setting the signaled gain factors for the reference TFC (TF1, TF1) to $\beta_c = 10/15$ and $\beta_d = 15/15$.

Note 4: For subtest 5 the β_c/β_d ratio of 15/15 for the TFC during the measurement period (TF1, TF0) is achieved by setting the signaled gain factors for the reference TFC (TF1, TF1) to $\beta_c = 14/15$ and $\beta_d = 15/15$.

Note 5: Testing UE using E-DPDCH Physical Layer category 1 Sub-test 3 is not required according to TS 25.306 Table 5.1g.

Note 6: β_{ed} cannot be set directly; it is set by Absolute Grant Value.

HSPA+ 3GPP release 7 (uplink category 7) 16QAM, Setup Configuration:

Table C.11.1.4: β values for transmitter characteristics tests with HS-DPCCH and E-DCH with 16QAM

Sub-test	β_c (Note 3)	β_d	β_{hs} (Note 1)	β_{ec}	β_{ed} (2xSF2) (Note 4)	β_{ed} (2xSF4) (Note 4)	CM (dB) (Note 2)	MPR (dB) (Note 2)	AG Index (Note 4)	E-TFCI (Note 5)	E-TFCI (boost)
1	1	0	30/15	30/15	$\beta_{ed1}: 30/15$ $\beta_{ed2}: 30/15$	$\beta_{ed3}: 24/15$ $\beta_{ed4}: 24/15$	3.5	2.5	14	105	105

Note 1: Δ_{ACK} , Δ_{NACK} and $\Delta_{CQI} = 30/15$ with $\beta_{hs} = 30/15 * \beta_c$.

Note 2: CM = 3.5 and the MPR is based on the relative CM difference, MPR = MAX(CM-1,0).

Note 3: DPDCH is not configured, therefore the β_c is set to 1 and $\beta_d = 0$ by default.

Note 4: β_{ed} can not be set directly; it is set by Absolute Grant Value.

Note 5: All the sub-tests require the UE to transmit 2SF2+2SF4 16QAM EDCH and they apply for UE using E-DPDCH category 7. E-DCH TTI is set to 2ms TTI and E-DCH table index = 2. To support these E-DCH configurations DPDCH is not allocated. The UE is signaled to use the extrapolation algorithm.

DC-HSDPA Setup Configuration

The following tests were completed according to procedures in section 7.3.13 of 3GPP TS34.108 v9.5.0. A summary of these settings are illustrated below:

Downlink Physical Channels are set as per 3GPP TS34.121-1 v9.0.0 E.5.

Table E.5.0: Levels for HSDPA connection setup

Parameter During Connection setup	Unit	Value
P-CPICH_Ec/Ior	dB	-10
P-CCPCH and SCH_Ec/Ior	dB	-12
PICH_Ec/Ior	dB	-15
HS-PDSCH	dB	off
HS-SCCH_1	dB	off
DPCH_Ec/Ior	dB	-5
OCNS_Ec/Ior	dB	-3.1

Call is set up as per 3GPP TS34.108 v9.5.0 sub clause 7.3.13

The configurations of the fixed reference channels for HSDPA RF tests are described in 3GPP TS 34.121, annex C for FDD and 3GPP TS 34.122.

Table C.8.1.12: Fixed Reference Channel H-Set 12

Parameter	Unit	Value
Nominal Avg. Inf. Bit Rate	kbps	60
Inter-TTI Distance	TTI's	1
Number of HARQ Processes	Processes	6
Information Bit Payload (N_{INF})	Bits	120
Number Code Blocks	Blocks	1
Binary Channel Bits Per TTI	Bits	960
Total Available SML's in UE	SML's	19200
Number of SML's per HARQ Proc.	SML's	3200
Coding Rate		0.15
Number of Physical Channel Codes	Codes	1
Modulation		QPSK
<p>Note 1: The RMC is intended to be used for DC-HSDPA mode and both cells shall transmit with identical parameters as listed in the table.</p> <p>Note 2: Maximum number of transmission is limited to 1, i.e., retransmission is not allowed. The redundancy and constellation version 0 shall be used.</p>		


Figure C.8.19: Coding rate for Fixed reference Channel H-Set 12 (QPSK)

<LTE Mode>

LTE Target MPR level

The device implements maximum power reduction per 3GPP 36.101 requirements where the MPR target is as below table. The MPR settings are implemented configured into firmware and cannot be disabled by the end user or LTE carrier network.

Modulation	Channel bandwidth / Transmission bandwidth configuration [RB]						MPR	3GPP
	1.4	3.0	5	10	15	20	Target	MPR
	MHz	MHz	MHz	MHz	MHz	MHz	(dB)	(dB)
QPSK	> 5	> 4	> 8	> 12	> 16	> 18	1	≤ 1
16 QAM	≤ 5	≤ 4	≤ 8	≤ 12	≤ 16	≤ 18	1	≤ 1
64 QAM	> 5	> 4	> 8	> 12	> 16	> 18	2	≤ 2

Note: The measurement result showed some difference from the target MPR level, due to expected 0.5dB measurement tolerance

LTE Bands

LTE Bands	Channel bandwidth / Transmission bandwidth configuration [RB]					
	1.4	3.0	5	10	15	20
	MHz	MHz	MHz	MHz	MHz	MHz
2	√	√	√	√	√	√
4	√	√	√	√	√	√
5	√	√	√	√	N/A	N/A
12	√	√	√	√	N/A	N/A
25	√	√	√	√	√	√
26	√	√	√	√	√	N/A
41	N/A	N/A	√	√	√	√
66	√	√	√	√	√	√
71	N/A	N/A	√	√	√	√

Note:

1. Per KDB 941225 D05v02r05, when a properly configured base station simulator is used for the SAR and power measurements, spectrum plots for each RB allocation and offset configuration is not required.
2. Per KDB 941225 D05v02r05, start with the largest channel bandwidth and measure SAR for QPSK with 1 RB allocation, using the RB offset and required test channel combination with the highest maximum output power for RB offsets at the upper edge, middle and lower edge of each required test channel.
3. Per KDB 941225 D05v02r05, 50% RB allocation for QPSK SAR testing follows 1RB QPSK allocation procedure.
4. Per KDB 941225 D05v02r05, for QPSK with 100% RB allocation, SAR is not required when the highest maximum output power for 100 % RB allocation is less than the highest maximum output



power in 50% and 1 RB allocations and the highest reported SAR for 1 RB and 50% RB allocation are ≤ 0.8 W/kg. Otherwise, SAR is measured for the highest output power channel; and if the reported SAR is > 1.45 W/kg, the remaining required test channels must also be tested.

5. Per KDB 941225 D05v02r05, 16QAM/64QAM output power for each RB allocation configuration is $>$ not $\frac{1}{2}$ dB higher than the same configuration in QPSK and the reported SAR for the QPSK configuration is ≤ 1.45 W/kg; Per KDB941225 D05v02r05, 16QAM/64QAM SAR testing is not required.
6. Per KDB 941225 D05v02r05, smaller bandwidth output power for each RB allocation configuration is $>$ not $\frac{1}{2}$ Db higher than the same configuration in the largest supported bandwidth, and the reported SAR for the largest supported band width is ≤ 1.45 W/kg; Per KDB 941225 D05v02r05, smaller bandwidth SAR testing is not required.
7. For LTE B4 / B5 / B7 / B17 the maximum bandwidth does not support three non-overlapping channels, per KDB941225 D05v02r05, when a device supports overlapping channel assignment in a channel bandwidth configuration, the middle channel of the group of overlapping channels should be selected for testing.
8. LTE band 2 / 12 SAR test was covered by Band 25 / 17; according to April 2015 TCB workshop, SAR test for overlapping LTE bands can be reduced if
 - a. The maximum output power, including tolerance, for the smaller band is \leq the larger band to qualify for the SAR test exclusion.
 - b. The channel bandwidth and other operating parameters for the smaller band are fully supported by the larger band.
9. According to 2017 TCB workshop, for 64 QAM and 16 QAM should be verified by checking the signal constellation with a call box to avoid incorrect maximum power levels due to MPR and other requirements associated with signal modulation, and the following figure is taken from the "Fundamental Measurement >> Modulation Analysis >> constellation" mode of the device connect to the CMW500 base station, therefore, the device 64QAM and 16QAM signal modulation are correct. Identify if Maximum Power Reduction (MPR) is optional or mandatory, i.e. built-in by design: only mandatory MPR may be considered during SAR testing, when the maximum output power is permanently limited by the MPR implemented within the UE; and only for the applicable RB (resource block) configurations specified in LTE standards: b) A-MPR (additional MPR) must be disabled.
10. Per KDB 447498 D04v01, the reported SAR is the measured SAR value adjusted for maximum tune-up tolerance.
 - a. Tune-up scaling Factor = tune-up limit power (mW) / EUT RF power (mW), where tune-up limit is the maximum rated power among all production units.
 - b. For SAR testing of WLAN signal with non-100% duty cycle, the measured SAR is scaled-up by the duty cycle scaling factor which is equal to " $1/(\text{duty cycle})$ "
 - c. For WWAN: Reported SAR(W/kg)= Measured SAR(W/kg)*Tune-up Scaling Factor
 - d. For WLAN/Bluetooth: Reported SAR(W/kg)= Measured SAR(W/kg)* Duty Cycle scaling

factor * Tune-up scaling factor

- e. For TDD LTE SAR measurement, the duty cycle 1:1.59 (62.9 %) was used perform testing and considering the theoretical duty cycle of 63.3% for extended cyclic prefix in the uplink, and the theoretical duty cycle of 62.9% for normal cyclic prefix in uplink, a scaling factor of extended cyclic prefix $63.3\%/62.9\% = 1.006$ is applied to scale-up the measured SAR result. The Reported TDD LTE SAR = measured SAR (W/kg)* Tune-up Scaling Factor* scaling factor for extended cyclic prefix.
- 11. Per KDB 447498 D04v01, for each exposure position, testing of other required channels within the operating mode of a frequency band is not required when the reported 1-g or 10-g SAR for the mid-band or highest output power channel is: ≤ 0.8 W/kg or 2.0 W/kg, for 1-g or 10-g respectively, when the transmission band is ≤ 100 MHz ≤ 0.6 W/kg or 1.5 W/kg, for 1-g or 10-g respectively, when the transmission band is between 100 MHz and 200 MHz ≤ 0.4 W/kg or 1.0 W/kg, for 1-g or 10-g respectively, when the transmission band is ≥ 200 MHz
- 12. Per KDB 865664 D01v01r04, for each frequency band, repeated SAR measurement is required only when the measured SAR is ≥ 0.8 W/kg.
- 13. Per KDB 648474 D04v01r03, when the reported SAR for a body-worn accessory measured without a headset connected to the handset is ≤ 1.2 W/kg, SAR testing with a headset connected to the handset is not required.

<WLAN 2.4GHz>

- 1. SAR is measured for 2.4 GHz 802.11b DSSS using either the fixed test position or, when applicable, the initial test position procedure. SAR test reduction is determined according to the following:
 - a. When the reported SAR of the highest measured maximum output power channel for the exposure configuration is ≤ 0.8 W/kg, no further SAR testing is required for 802.11b DSSS in that exposure configuration.
 - b. When the reported SAR is > 0.8 W/kg, SAR is required for that position using the next highest measured output power channel. When any reported SAR is > 1.2 W/kg, SAR is required for the third channel; i.e., all channels require testing.
- 2. 2.4 GHz 802.11 g/n OFDM are additionally evaluated for SAR if the highest reported SAR for 802.11b, adjusted by the ratio of the OFDM to DSSS specified maximum output power, is > 1.2 W/kg. When SAR is required for OFDM modes in 2.4 GHz band, the Initial Test configuration Procedures should be followed.
- 3. For held-to-ear and hotspot operations, the initial test position procedures were applied. The test position with the highest extrapolated peak SAR will be used as the initial test position. When reported SAR for the initial test position is ≤ 0.4 W/kg, no additional testing for the remaining test positions was required. Otherwise, SAR is evaluated at the subsequent highest peak SAR positions until the reported SAR result is ≤ 0.8 W/kg or all test positions are measured.
- 4. Justification for test configurations for WLAN per KDB Publication 248227 D02DR02-41929 for



2.4 GHz WI-FI single transmission chain operations, the highest measured maximum output power channel for DSSS was selected for SAR measurement. SAR for OFDM modes (2.4 GHz 802.11g/n) was not required due to the maximum allowed powers and the highest reported DSSS SAR.

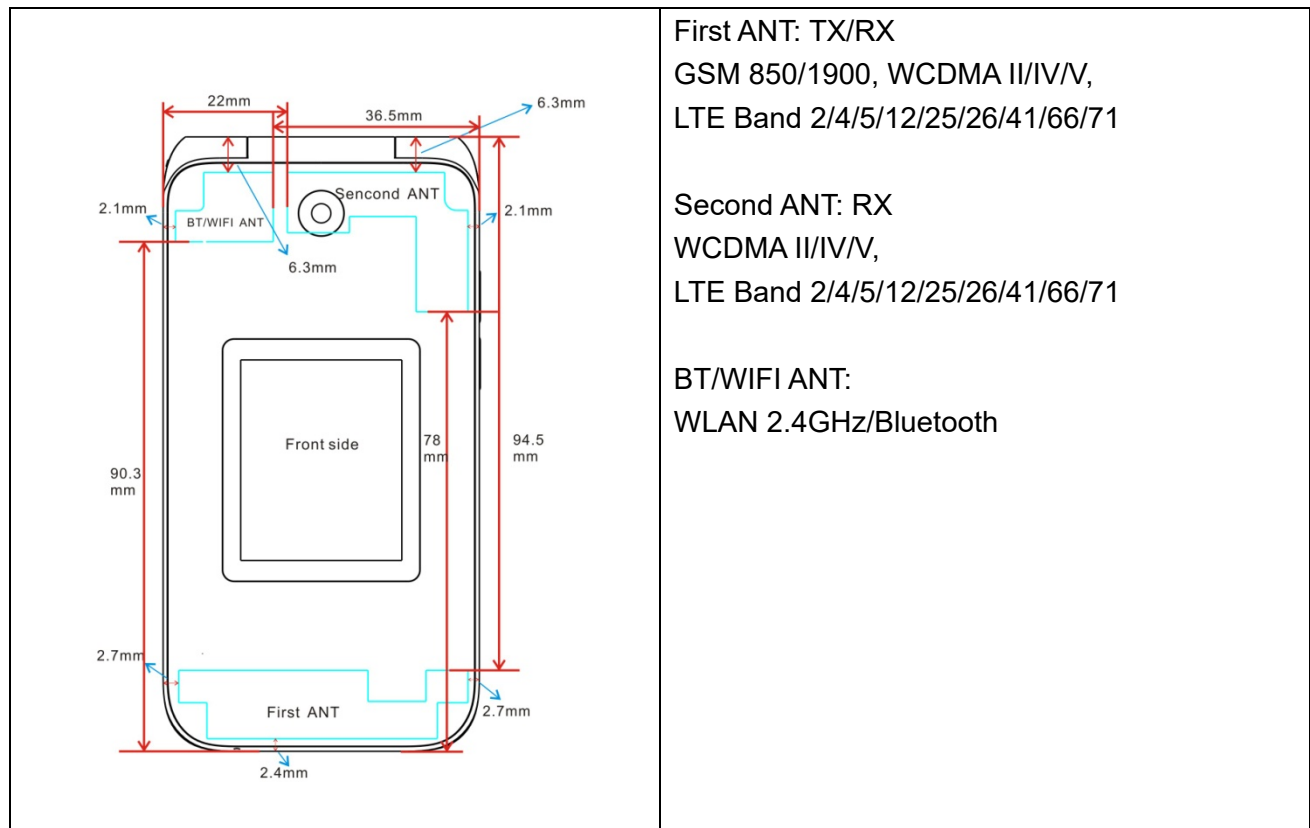
5. A fixed level power reduction is applied for WiFi when handset operates "held to the body" condition or "held to the ear" condition, the power reduction triggered by audio receiver detection and call establish status.
6. Per KDB 248227 D01v02r02, In the 2.4 GHz band, separate SAR procedures are applied to DSSS and OFDM configurations to simplify DSSS test requirements. SAR is not required for the following 2.4 GHz OFDM conditions:
 - a. When KDB Publication 447498 SAR test exclusion applies to the OFDM configuration.
 - b. When the highest reported SAR for DSSS is adjusted by the ratio of OFDM to DSSS specified maximum output power and the adjusted SAR is ≤ 1.2 W/kg.

13. Conducted Power List

Remark: The output power of WWAN/WLAN/Bluetooth refers to the annex E of this report.

14. Hotspot Mode Evaluation Procedure

➤ EUT Antenna Location



➤ EUT Antenna Distance

Antenna Location	Front	Back	Left	Right	Top	Bottom
First ANT	<5mm	<5mm	<5mm	<5mm	>25mm	<5mm
BT/WIFI ANT	<5mm	<5mm	<5mm	>25mm	<25mm	>25mm

➤ Hotspot Evaluation

Assessment	Hotspot Side for SAR Test Distance: 10mm					
Antennas	Front	Back	Left	Right	Top	Bottom
First ANT	Yes	Yes	Yes	Yes	No	Yes
BT/WIFI ANT	Yes	Yes	Yes	No	Yes	No

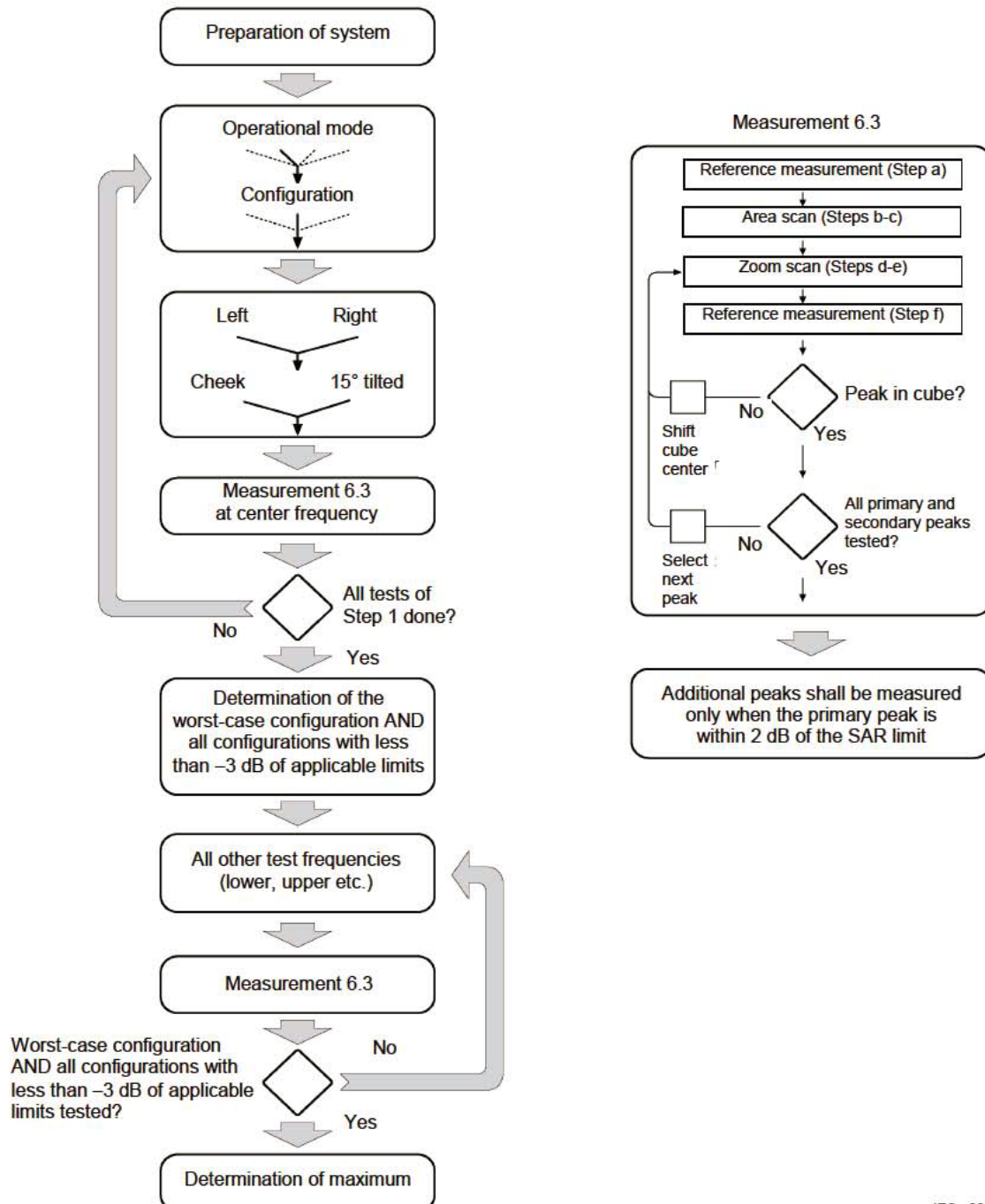


Note :

1. The SAR evaluation procedures for Portable Devices with Wireless Router function is according to KDB 941225 D06 Hotspot SAR v02r01.
2. Head/Body-worn/Hotspot mode SAR assessments are required.
3. Referring to KDB 941225 D06, when the overall device length and width are $\geq 9\text{cm} \times 5\text{cm}$, the test distance is 10 mm. SAR must be measured for all sides and surfaces with a transmitting antenna located within 25mm from that surface or edge.
4. For WWAN bands, all of surface or edges would be tested except the top side in this report.
5. For WLAN bands, all of surface or edges would be tested except the bottom side and right side in this report.

15. Block Diagram of the Tests to be Performed

15.1. Head



IEC 228/05

15.2. Body

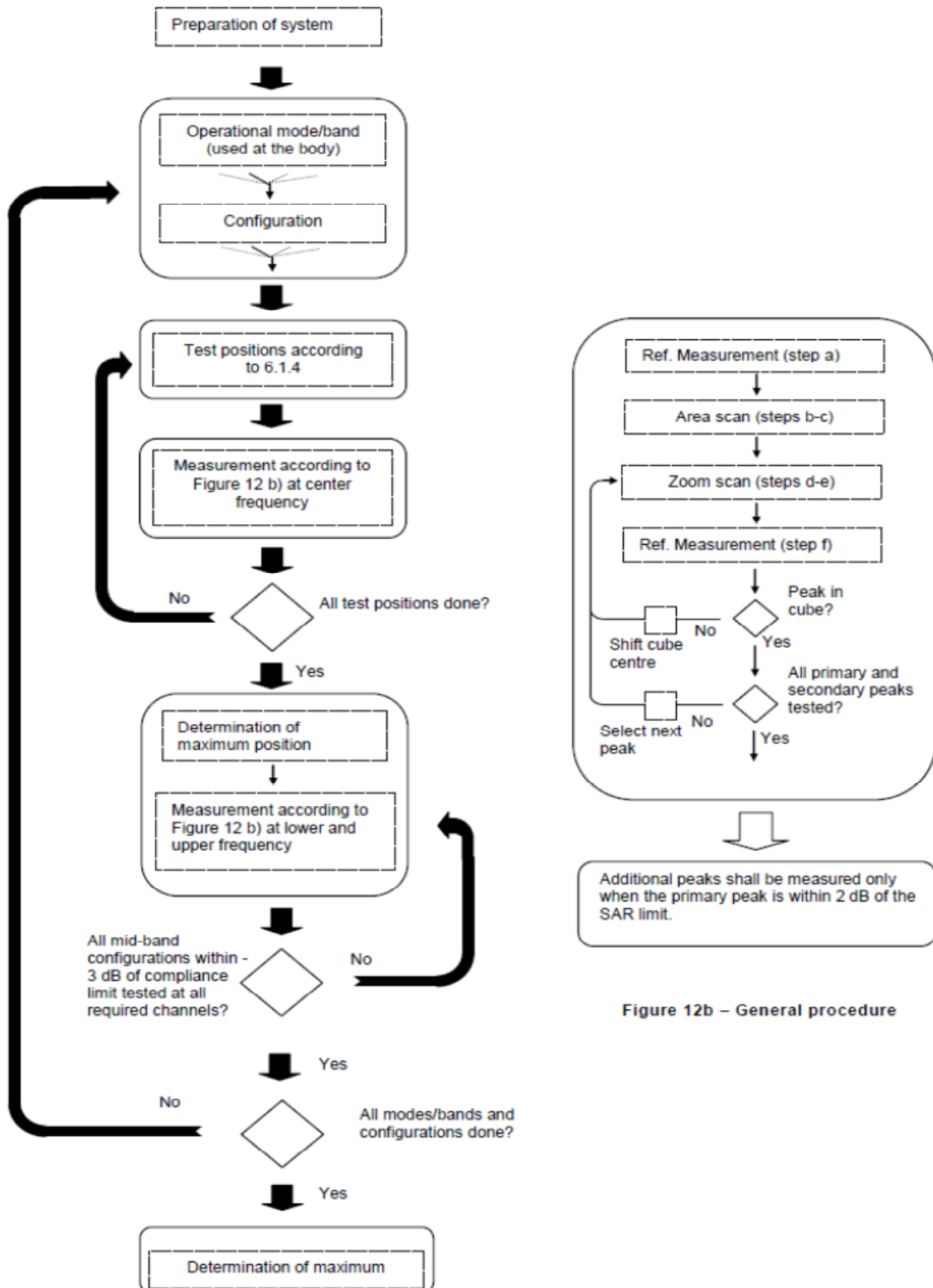


Figure 12b – General procedure

16. Test Results List

16.1. Test Guidance

1. Per KDB 447498 D04v01, the reported SAR is the measured SAR value adjusted for maximum tune-up tolerance.
 - a. Tune-up scaling Factor = tune-up limit power (mW) / EUT RF power (mW), where tune-up limit is the maximum rated power among all production units.
 - b. For SAR testing of WLAN signal with non-100% duty cycle, the measured SAR is scaled-up by the duty cycle scaling factor which is equal to "1/(duty cycle)".
 - c. For WWAN: Reported SAR(W/kg)= Measured SAR(W/kg)*Tune-up Scaling Factor.
 - d. For WLAN/Bluetooth: Reported SAR(W/kg)= Measured SAR(W/kg)* Duty Cycle scaling factor * Tune-up scaling factor.
2. Per KDB 447498 D04v01, for each exposure position, testing of other required channels within the operating mode of a frequency band is not required when the *reported* 1-g or 10-g SAR for the mid-band or highest output power channel is:
 - a. ≤ 0.8 W/kg or 2.0 W/kg, for 1-g or 10-g respectively, when the transmission band is ≤ 100 MHz
 - b. ≤ 0.6 W/kg or 1.5 W/kg, for 1-g or 10-g respectively, when the transmission band is between 100 MHz and 200 MHz
 - c. ≤ 0.4 W/kg or 1.0 W/kg, for 1-g or 10-g respectively, when the transmission band is ≥ 200 MHz
3. Per KDB 865664 D01v01r04, for each frequency band, repeated SAR measurement is required only when the measured SAR is ≥ 0.8 W/kg.
4. Per KDB 648474 D04v01r03, when the reported SAR for a body-worn accessory measured without a headset connected to the handset is ≤ 1.2 W/kg, SAR testing with a headset connected to the handset is not required.
5. Per KDB648474 D04v01r03, for smart phones with a display diagonal dimension > 15.0 cm or an overall diagonal dimension > 16.0 cm, when hotspot mode applies, 10-g extremity SAR is required only for the surfaces and edges with hotspot mode 1-g reported SAR > 1.2 W/kg, however, when power reduction applies to hotspot mode the measured SAR must be scaled to the maximum output power, including tolerance, allowed for tablet modes to compare with the 1.2 W/kg SAR test reduction threshold.
6. Per KDB248227 D01v02r02, a Wi-Fi device must be configured to transmit continuously at the required data rate, channel bandwidth and signal modulation, using the highest transmission duty factor supported by the test mode tools for SAR measurement. The test frequencies established using test mode must correspond to the actual channel frequencies required for operations in the U.S. When 802.11 frame gaps are accounted for in the transmission, a maximum transmission duty factor of 92 - 96% is typically achievable in most test mode configurations. A minimum transmission duty factor of 85% is required to avoid certain hardware and device implementation issues related to wide range SAR scaling. In addition, a periodic



transmission duty factor is required for current generation SAR systems to measure SAR correctly. Unless it is permitted by specific KDB procedures or continuous transmission is specifically restricted by the device, the reported SAR must be scaled to 100% transmission duty factor to determine compliance at the maximum tune-up tolerance limit. When a device is not capable of sustaining continuous transmission or the output can become nonlinear, and it is limited by hardware design and unable to transmit at higher than 85% duty factor, a periodic duty factor within 15% of the maximum duty factor the device is capable of transmitting should be used. The reported SAR must be scaled to the maximum transmission duty factor to determine compliance. Descriptions of the procedures applied to establish the specific duty factor used for SAR testing are required in SAR reports to support the test results.

7. For hotspot, SAR measurement of the front side exposure should be performed that open the flip since it is the minimum separation distance between the device and phantom.
8. When this device is proximity to human the sensor at the bottom side will be active automatically and the reduced power of WWAN applied.



16.2. Head SAR Data

➤ GSM Head SAR

Plot No.	Band/Mode	Test Position	CH.	Ave. Power (dBm)	Tune-up Limit (dBm)	Tune-up Scaling Factor	Meas. SAR _{1g} (W/kg)	Reported SAR _{1g} (W/kg)
	GPRS 850(4 TX slots)	Right Cheek	251	28.73	29.50	1.194	0.546	0.652
	GPRS 850(4 TX slots)	Right Tilt	251	28.73	29.50	1.194	0.298	0.356
1#	GPRS 850(4 TX slots)	Left Cheek	251	28.73	29.50	1.194	0.581	0.694
	GPRS 850(4 TX slots)	Left Tilt	251	28.73	29.50	1.194	0.174	0.208
	GPRS 1900(4 TX slots)	Right Cheek	512	25.92	26.50	1.143	0.659	0.753
	GPRS 1900(4 TX slots)	Right Tilt	512	25.92	26.50	1.143	0.250	0.286
	GPRS 1900(4 TX slots)	Left Cheek	512	25.92	26.50	1.143	0.717	0.819
	GPRS 1900(4 TX slots)	Left Tilt	512	25.92	26.50	1.143	0.165	0.189
2#	GPRS 1900(4 TX slots)	Left Cheek	661	25.87	26.50	1.156	0.717	0.829
	GPRS 1900(4 TX slots)	Left Cheek	810	25.82	26.50	1.169	0.706	0.826

➤ WCDMA Head SAR

Plot No.	Band/Mode	Test Position	CH.	Ave. Power (dBm)	Tune-up Limit (dBm)	Tune-up Scaling Factor	Meas. SAR _{1g} (W/kg)	Reported SAR _{1g} (W/kg)
	Band II/RMC 12.2Kbps	Right Cheek	9262	22.87	23.50	1.156	0.147	0.170
	Band II/RMC 12.2Kbps	Right Tilt	9262	22.87	23.50	1.156	0.067	0.078
3#	Band II/RMC 12.2Kbps	Left Cheek	9262	22.87	23.50	1.156	0.447	0.517
	Band II/RMC 12.2Kbps	Left Tilt	9262	22.87	23.50	1.156	0.073	0.084
	Band IV/RMC 12.2Kbps	Right Cheek	1413	22.86	23.50	1.159	0.247	0.286
	Band IV/RMC 12.2Kbps	Right Tilt	1413	22.86	23.50	1.159	0.238	0.276
4#	Band IV/RMC 12.2Kbps	Left Cheek	1413	22.86	23.50	1.159	0.342	0.396
	Band IV/RMC 12.2Kbps	Left Tilt	1413	22.86	23.50	1.159	0.148	0.171
	Band V/RMC 12.2Kbps	Right Cheek	4132	23.25	24.00	1.189	0.434	0.516
	Band V/RMC 12.2Kbps	Right Tilt	4132	23.25	24.00	1.189	0.263	0.313
5#	Band V/RMC 12.2Kbps	Left Cheek	4132	23.25	24.00	1.189	0.605	0.719
	Band V/RMC 12.2Kbps	Left Tilt	4132	23.25	24.00	1.189	0.090	0.107



➤ LTE QPSK Head SAR

Plot No.	Band/Mode	Test Position	CH.	Ave. Power (dBm)	Tune-up Limit (dBm)	Tune-up Scaling Factor	Meas. SAR _{1g} (W/kg)	Reported SAR _{1g} (W/kg)
	LTE Band 5/1RB#0 10M	Right Cheek	20525	23.93	24.50	1.140	0.378	0.431
	LTE Band 5/1RB#0 10M	Right Tilt	20525	23.93	24.50	1.140	0.250	0.285
6#	LTE Band 5/1RB#0 10M	Left Cheek	20525	23.93	24.50	1.140	0.502	0.572
	LTE Band 5/1RB#0 10M	Left Tilt	20525	23.93	24.50	1.140	0.377	0.430
	LTE Band 5/25RB#0 10M	Right Cheek	20525	22.87	23.50	1.156	0.297	0.343
	LTE Band 5/25RB#0 10M	Right Tilt	20525	22.87	23.50	1.156	0.196	0.227
	LTE Band 5/25RB#0 10M	Left Cheek	20525	22.87	23.50	1.156	0.394	0.456
	LTE Band 5/25RB#0 10M	Left Tilt	20525	22.87	23.50	1.156	0.296	0.342
	LTE Band 12/1RB#0 10M	Right Cheek	23095	23.96	24.50	1.132	0.496	0.562
	LTE Band 12/1RB#0 10M	Right Tilt	23095	23.96	24.50	1.132	0.245	0.277
7#	LTE Band 12/1RB#0 10M	Left Cheek	23095	23.96	24.50	1.132	0.957	1.084
	LTE Band 12/1RB#0 10M	Left Tilt	23095	23.96	24.50	1.132	0.669	0.758
	LTE Band 12/1RB#0 10M	Left Cheek	23060	23.81	24.50	1.172	0.911	1.068
	LTE Band 12/1RB#0 10M	Left Cheek	23130	23.86	24.50	1.159	0.918	1.064
	LTE Band 12/25RB#0 10M	Right Cheek	23095	22.75	23.50	1.189	0.387	0.460
	LTE Band 12/25RB#0 10M	Right Tilt	23095	22.75	23.50	1.189	0.191	0.227
	LTE Band 12/25RB#0 10M	Left Cheek	23095	22.75	23.50	1.189	0.746	0.887
	LTE Band 12/25RB#0 10M	Left Tilt	23095	22.75	23.50	1.189	0.522	0.620
	LTE Band 12/50RB#0 10M	Left Cheek	23095	22.81	23.50	1.172	0.602	0.706
	LTE Band 25/1RB#0 20M	Right Cheek	26365	23.45	24.00	1.135	0.387	0.439
	LTE Band 25/1RB#0 20M	Right Tilt	26365	23.45	24.00	1.135	0.067	0.076
8#	LTE Band 25/1RB#0 20M	Left Cheek	26365	23.45	24.00	1.135	0.451	0.512
	LTE Band 25/1RB#0 20M	Left Tilt	26365	23.45	24.00	1.135	0.191	0.217
	LTE Band 25/50RB#0 20M	Right Cheek	26365	22.42	23.00	1.143	0.387	0.442
	LTE Band 25/50RB#0 20M	Right Tilt	26365	22.42	23.00	1.143	0.048	0.055
	LTE Band 25/50RB#0 20M	Left Cheek	26365	22.42	23.00	1.143	0.125	0.143
	LTE Band 25/50RB#0 20M	Left Tilt	26365	22.42	23.00	1.143	0.191	0.218
	LTE Band 26/1RB#0 15M	Right Cheek	26865	23.86	24.50	1.159	0.431	0.499
	LTE Band 26/1RB#0 15M	Right Tilt	26865	23.86	24.50	1.159	0.273	0.316
9#	LTE Band 26/1RB#0 15M	Left Cheek	26865	23.86	24.50	1.159	0.439	0.509
	LTE Band 26/1RB#0 15M	Left Tilt	26865	23.86	24.50	1.159	0.291	0.337
	LTE Band 26/36RB#0 15M	Right Cheek	26865	22.76	23.50	1.186	0.336	0.399



REPORT No.: SZ22060386S01

	LTE Band 26/36RB#0 15M	Right Tilt	26865	22.76	23.50	1.186	0.217	0.257
	LTE Band 26/36RB#0 15M	Left Cheek	26865	22.76	23.50	1.186	0.372	0.441
	LTE Band 26/36RB#0 15M	Left Tilt	26865	22.76	23.50	1.186	0.227	0.269
	LTE Band 41/1RB#0 20M	Right Cheek	40620	23.95	24.50	1.135	0.170	0.194
	LTE Band 41/1RB#0 20M	Right Tilt	40620	23.95	24.50	1.135	0.093	0.106
	LTE Band 41/1RB#0 20M	Left Cheek	40620	23.95	24.50	1.135	0.264	0.301
	LTE Band 41/1RB#0 20M	Left Tilt	40620	23.95	24.50	1.135	0.083	0.094
	LTE Band 41/50RB#0 20M	Right Cheek	40620	22.95	23.50	1.135	0.120	0.137
	LTE Band 41/50RB#0 20M	Right Tilt	40620	22.95	23.50	1.135	0.082	0.093
	LTE Band 41/50RB#0 20M	Left Cheek	40620	22.95	23.50	1.135	0.154	0.176
	LTE Band 41/50RB#0 20M	Left Tilt	40620	22.95	23.50	1.135	0.073	0.083
(HPUE)								
	LTE Band 41/1RB#0 20M	Right Cheek	40620	26.80	27.50	1.175	0.292	0.345
	LTE Band 41/1RB#0 20M	Right Tilt	40620	26.80	27.50	1.175	0.166	0.196
10#	LTE Band 41/1RB#0 20M	Left Cheek	40620	26.80	27.50	1.175	0.343	0.405
	LTE Band 41/1RB#0 20M	Left Tilt	40620	26.80	27.50	1.175	0.083	0.098
	LTE Band 41/50RB#0 20M	Right Cheek	40620	25.80	26.50	1.175	0.130	0.153
	LTE Band 41/50RB#0 20M	Right Tilt	40620	25.80	26.50	1.175	0.074	0.087
	LTE Band 41/50RB#0 20M	Left Cheek	40620	25.80	26.50	1.175	0.154	0.182
	LTE Band 41/50RB#0 20M	Left Tilt	40620	25.80	26.50	1.175	0.042	0.049
11#	LTE Band 66/1RB#0 20M	Right Cheek	132322	23.86	24.50	1.159	0.408	0.473
	LTE Band 66/1RB#0 20M	Right Tilt	132322	23.86	24.50	1.159	0.282	0.327
	LTE Band 66/1RB#0 20M	Left Cheek	132322	23.86	24.50	1.159	0.321	0.372
	LTE Band 66/1RB#0 20M	Left Tilt	132322	23.86	24.50	1.159	0.146	0.169
	LTE Band 66/50RB#0 20M	Right Cheek	132322	22.90	23.50	1.148	0.306	0.351
	LTE Band 66/50RB#0 20M	Right Tilt	132322	22.90	23.50	1.148	0.219	0.251
	LTE Band 66/50RB#0 20M	Left Cheek	132322	22.90	23.50	1.148	0.151	0.173
	LTE Band 66/50RB#0 20M	Left Tilt	132322	22.90	23.50	1.148	0.110	0.126
	LTE Band 71/1RB#0 20M	Right Cheek	133322	23.80	24.50	1.175	0.396	0.465
	LTE Band 71/1RB#0 20M	Right Tilt	133322	23.80	24.50	1.175	0.075	0.089
12#	LTE Band 71/1RB#0 20M	Left Cheek	133322	23.80	24.50	1.175	0.443	0.520
	LTE Band 71/1RB#0 20M	Left Tilt	133322	23.80	24.50	1.175	0.072	0.085
	LTE Band 71/50RB#0 20M	Right Cheek	133322	23.03	23.50	1.114	0.232	0.259
	LTE Band 71/50RB#0 20M	Right Tilt	133322	23.03	23.50	1.114	0.068	0.076
	LTE Band 71/50RB#0 20M	Left Cheek	133322	23.03	23.50	1.114	0.323	0.360



	LTE Band 71/50RB#0 20M	Left Tilt	133322	23.03	23.50	1.114	0.017	0.019
--	------------------------	-----------	--------	-------	-------	-------	-------	-------

➤ **WLAN Head SAR**

Plot No.	Band/Mode	Test Position	CH.	Ave. Power (dBm)	Tune-up Limit (dBm)	Tune-up Scaling Factor	Meas. SAR _{1g} (W/kg)	Reported SAR _{1g} (W/kg)
	WLAN2.4GHz/802.11b	Right Cheek	11	16.47	17.00	1.130	0.113	0.128
	WLAN2.4GHz/802.11b	Right Tilt	11	16.47	17.00	1.130	0.025	0.028
13#	WLAN2.4GHz/802.11b	Left Cheek	11	16.47	17.00	1.130	0.274	0.311
	WLAN2.4GHz/802.11b	Left Tilt	11	16.47	17.00	1.130	0.018	0.021
	WLAN2.4GHz/802.11b	Left Cheek	1	16.30	17.00	1.175	0.230	0.271
	WLAN2.4GHz/802.11b	Left Cheek	6	16.43	17.00	1.140	0.268	0.307

Note:

1. Per KDB 447498 D04v01, for each exposure position, if the highest output power channel Reported SAR ≤ 0.8 W/kg, other channels SAR testing is not necessary.
2. Per KDB 865664 D01v01r04, for each frequency band, repeated SAR measurement is required when the measured SAR is ≥ 0.8 W/kg.
3. Per KDB 941225 D05v02r05, 100% RB allocation SAR measurement is not required when the highest reported SAR for 1 RB and 50% RB allocation are ≤ 0.8 W/kg.
4. Per KDB 248227 D01v02r02, for 802.11b DSSS , when the reported SAR of the highest measured maximum output power channel for the exposure configuration is ≤ 0.8 W/kg, no further SAR testing is required in that exposure configuration.
5. Per KDB 248227 D01v02r02, OFDM SAR is not required when the highest reported SAR for DSSS is adjusted by the ratio of OFDM to DSSS specified maximum output power and the adjusted SAR is ≤ 1.2 W/kg.
6. According to KDB 865664 D02v01r02, SAR plot is required for the highest measured SAR in each exposure configuration, wireless mode and frequency band combination.
7. For TDD-LTE, the reported SAR should be scaled with the duty cycle scaling factor 1.006.
8. The 2.4G WLAN reported 1g SAR (W/kg) should be scaled with the duty cycle scaling factor 1.005.



16.3. Body SAR Data

➤ GSM Body SAR

Plot No.	Band/Mode	Test Position	CH.	Ave. Power (dBm)	Tune-up Limit (dBm)	Tune-up Scaling Factor	Meas. SAR _{1g} (W/kg)	Reported SAR _{1g} (W/kg)
	GPRS 850(4 TX slots)	Front Side	251	28.73	29.50	1.194	0.488	0.583
14#	GPRS 850(4 TX slots)	Back Side	251	28.73	29.50	1.194	0.694	0.829
	GPRS 850(4 TX slots)	Left Side	251	28.73	29.50	1.194	0.478	0.571
	GPRS 850(4 TX slots)	Right Side	251	28.73	29.50	1.194	0.477	0.570
	GPRS 850(4 TX slots)	Bottom Side	251	28.73	29.50	1.194	0.521	0.622
	GPRS 850(4 TX slots)	Back Side	128	28.69	29.50	1.205	0.594	0.716
	GPRS 850(4 TX slots)	Back Side	189	28.67	29.50	1.211	0.677	0.820
	GPRS 1900(4 TX slots)	Front Side	512	25.92	26.50	1.143	0.923	1.055
15#	GPRS 1900(4 TX slots)	Back Side	512	25.92	26.50	1.143	1.030	1.177
	GPRS 1900(4 TX slots)	Left Side	512	25.92	26.50	1.143	0.636	0.727
	GPRS 1900(4 TX slots)	Right Side	512	25.92	26.50	1.143	0.650	0.743
	GPRS 850(4 TX slots)	Bottom Side	512	25.92	26.50	1.143	0.544	0.622
	GPRS 850(4 TX slots)	Front Side	661	25.87	26.50	1.156	0.839	0.970
	GPRS 850(4 TX slots)	Front Side	810	25.82	26.50	1.169	0.823	0.962
	GPRS 850(4 TX slots)	Back Side	661	25.87	26.50	1.156	0.938	1.084
	GPRS 850(4 TX slots)	Back Side	810	25.82	26.50	1.169	0.848	0.992

➤ WCDMA Body SAR

Plot No.	Band/Mode	Test Position	CH.	Ave. Power (dBm)	Tune-up Limit (dBm)	Tune-up Scaling Factor	Meas. SAR _{1g} (W/kg)	Reported SAR _{1g} (W/kg)
Reduced Power								
	Band II/RMC 12.2Kbps	Front Side	9262	21.37	22.00	1.156	0.865	1.000
	Band II/RMC 12.2Kbps	Back Side	9262	21.37	22.00	1.156	0.790	0.913
	Band II/RMC 12.2Kbps	Left Side	9262	21.37	22.00	1.156	0.211	0.244
	Band II/RMC 12.2Kbps	Right Side	9262	21.37	22.00	1.156	0.464	0.536
	Band II/RMC 12.2Kbps	Bottom Side	9262	21.37	22.00	1.156	0.241	0.278
	Band II/RMC 12.2Kbps	Front Side	9400	21.28	22.00	1.180	0.904	1.067
16#	Band II/RMC 12.2Kbps	Front Side	9538	21.23	22.00	1.194	0.921	1.100
	Band II/RMC 12.2Kbps	Back Side	9400	21.28	22.00	1.180	0.778	0.918
	Band II/RMC 12.2Kbps	Back Side	9538	21.23	22.00	1.194	0.796	0.950
Reduced Power								



17#	Band IV/RMC 12.2Kbps	Front Side	1413	21.36	22.00	1.159	0.784	0.908
	Band IV/RMC 12.2Kbps	Back Side	1413	21.36	22.00	1.159	0.515	0.597
	Band IV/RMC 12.2Kbps	Left Side	1413	21.36	22.00	1.159	0.035	0.041
	Band IV/RMC 12.2Kbps	Right Side	1413	21.36	22.00	1.159	0.116	0.134
	Band IV/RMC 12.2Kbps	Bottom Side	1413	21.36	22.00	1.159	0.219	0.254
	Band IV/RMC 12.2Kbps	Front Side	1312	21.34	22.00	1.164	0.778	0.906
	Band IV/RMC 12.2Kbps	Front Side	1513	21.35	22.00	1.161	0.725	0.842
	Band V/RMC 12.2Kbps	Front Side	4132	23.25	24.00	1.189	0.484	0.575
18#	Band V/RMC 12.2Kbps	Back Side	4132	23.25	24.00	1.189	0.961	1.142
	Band V/RMC 12.2Kbps	Left Side	4132	23.25	24.00	1.189	0.473	0.562
	Band V/RMC 12.2Kbps	Right Side	4132	23.25	24.00	1.189	0.471	0.560
	Band V/RMC 12.2Kbps	Bottom Side	4132	23.25	24.00	1.189	0.117	0.139
	Band V/RMC 12.2Kbps	Back Side	4182	23.14	24.00	1.219	0.661	0.806
	Band V/RMC 12.2Kbps	Back Side	4233	23.21	24.00	1.199	0.635	0.762

➤ **LTE QPSK Body SAR**

Plot No.	Band/Mode	Test Position	CH.	Ave. Power (dBm)	Tune-up Limit (dBm)	Tune-up Scaling Factor	Meas. SAR _{1g} (W/kg)	Reported SAR _{1g} (W/kg)
	LTE Band 5/1RB#0 10M	Front Side	20525	23.93	24.50	1.140	0.573	0.653
19#	LTE Band 5/1RB#0 10M	Back Side	20525	23.93	24.50	1.140	1.030	1.174
	LTE Band 5/1RB#0 10M	Left Side	20525	23.93	24.50	1.140	0.659	0.751
	LTE Band 5/1RB#0 10M	Right Side	20525	23.93	24.50	1.140	0.574	0.655
	LTE Band 5/1RB#0 10M	Bottom Side	20525	23.93	24.50	1.140	0.151	0.172
	LTE Band 5/1RB#0 10M	Back Side	20450	23.90	24.50	1.148	0.813	0.933
	LTE Band 5/1RB#0 10M	Back Side	20600	23.84	24.50	1.164	0.888	1.034
	LTE Band 5/25RB#0 10M	Front Side	20525	22.87	23.50	1.156	0.484	0.560
	LTE Band 5/25RB#0 10M	Back Side	20525	22.87	23.50	1.156	0.636	0.735
	LTE Band 5/25RB#0 10M	Left Side	20525	22.87	23.50	1.156	0.601	0.695
	LTE Band 5/25RB#0 10M	Right Side	20525	22.87	23.50	1.156	0.496	0.573
	LTE Band 5/25RB#0 10M	Bottom Side	20525	22.87	23.50	1.156	0.102	0.118
	LTE Band 5/50RB#0 10M	Back Side	20525	22.90	23.50	1.148	0.510	0.586
	LTE Band 12/1RB#0 10M	Front Side	23095	23.96	24.50	1.132	0.558	0.632
20#	LTE Band 12/1RB#0 10M	Back Side	23095	23.96	24.50	1.132	1.050	1.189
	LTE Band 12/1RB#0 10M	Left Side	23095	23.96	24.50	1.132	0.392	0.444
	LTE Band 12/1RB#0 10M	Right Side	23095	23.96	24.50	1.132	0.404	0.457
	LTE Band 12/1RB#0 10M	Bottom Side	23095	23.96	24.50	1.132	0.113	0.128



	LTE Band 12/1RB#0 10M	Back Side	23060	23.81	24.50	1.172	0.928	1.088
	LTE Band 12/1RB#0 10M	Back Side	23130	23.86	24.50	1.159	0.889	1.030
	LTE Band 12/25RB#0 10M	Front Side	23095	22.75	23.50	1.189	0.435	0.517
	LTE Band 12/25RB#0 10M	Back Side	23095	22.75	23.50	1.189	0.846	1.005
	LTE Band 12/25RB#0 10M	Left Side	23095	22.75	23.50	1.189	0.385	0.458
	LTE Band 12/25RB#0 10M	Right Side	23095	22.75	23.50	1.189	0.321	0.382
	LTE Band 12/25RB#0 10M	Bottom Side	23095	22.75	23.50	1.189	0.091	0.108
	LTE Band 12/25RB#0 10M	Back Side	23060	22.72	23.50	1.197	0.812	0.972
	LTE Band 12/25RB#0 10M	Back Side	23130	22.70	23.50	1.202	0.830	0.998
	LTE Band 12/50RB#0 10M	Back Side	23095	22.81	23.50	1.172	0.646	0.757
Reduced Power								
	LTE Band 25/1RB#0 20M	Front Side	26365	21.45	22.00	1.135	0.949	1.077
	LTE Band 25/1RB#0 20M	Back Side	26365	21.45	22.00	1.135	0.761	0.864
	LTE Band 25/1RB#0 20M	Left Side	26365	21.45	22.00	1.135	0.103	0.117
	LTE Band 25/1RB#0 20M	Right Side	26365	21.45	22.00	1.135	0.085	0.096
	LTE Band 25/1RB#0 20M	Bottom Side	26365	21.45	22.00	1.135	0.251	0.285
	LTE Band 25/1RB#0 20M	Front Side	26140	21.41	22.00	1.146	0.900	1.031
21#	LTE Band 25/1RB#0 20M	Front Side	26590	21.38	22.00	1.153	0.961	1.108
	LTE Band 25/1RB#0 20M	Back Side	26140	21.41	22.00	1.146	0.717	0.822
	LTE Band 25/1RB#0 20M	Back Side	26590	21.38	22.00	1.153	0.756	0.871
	LTE Band 25/50RB#0 20M	Front Side	26365	20.42	21.00	1.143	0.889	1.016
	LTE Band 25/50RB#0 20M	Back Side	26365	20.42	21.00	1.143	0.655	0.749
	LTE Band 25/50RB#0 20M	Left Side	26365	20.42	21.00	1.143	0.093	0.106
	LTE Band 25/50RB#0 20M	Right Side	26365	20.42	21.00	1.143	0.076	0.087
	LTE Band 25/50RB#0 20M	Bottom Side	26365	20.42	21.00	1.143	0.226	0.258
	LTE Band 25/50RB#0 20M	Front Side	26140	20.35	21.00	1.161	0.842	0.978
	LTE Band 25/50RB#0 20M	Front Side	26590	20.36	21.00	1.159	0.837	0.970
	LTE Band 25/100RB#0 20M	Front Side	26590	20.48	21.00	1.127	0.712	0.803
	LTE Band 26/1RB#0 15M	Front Side	26865	23.86	24.50	1.159	0.583	0.676
22#	LTE Band 26/1RB#0 15M	Back Side	26865	23.86	24.50	1.159	1.020	1.182
	LTE Band 26/1RB#0 15M	Left Side	26865	23.86	24.50	1.159	0.676	0.783
	LTE Band 26/1RB#0 15M	Right Side	26865	23.86	24.50	1.159	0.511	0.592
	LTE Band 26/1RB#0 15M	Bottom Side	26865	23.86	24.50	1.159	0.135	0.156
	LTE Band 26/1RB#0 15M	Back Side	26765	23.80	24.50	1.175	0.989	1.162
	LTE Band 26/1RB#0 15M	Back Side	26965	23.69	24.50	1.205	0.971	1.170
	LTE Band 26/36RB#0 15M	Front Side	26865	22.76	23.50	1.186	0.502	0.595



	LTE Band 26/36RB#0 15M	Back Side	26865	22.76	23.50	1.186	0.738	0.875
	LTE Band 26/36RB#0 15M	Left Side	26865	22.76	23.50	1.186	0.365	0.433
	LTE Band 26/36RB#0 15M	Right Side	26865	22.76	23.50	1.186	0.265	0.314
	LTE Band 26/36RB#0 15M	Bottom Side	26865	22.76	23.50	1.186	0.102	0.121
	LTE Band 26/36RB#0 15M	Back Side	26765	22.72	23.50	1.197	0.720	0.862
	LTE Band 26/36RB#0 15M	Back Side	26965	22.70	23.50	1.202	0.714	0.858
	LTE Band 26/75RB#0 15M	Back Side	26865	22.66	23.50	1.213	0.644	0.781
Reduced Power								
	LTE Band 41/1RB#0 20M	Front Side	40620	16.93	17.50	1.140	0.158	0.181
	LTE Band 41/1RB#0 20M	Back Side	40620	16.93	17.50	1.140	0.838	0.961
	LTE Band 41/1RB#0 20M	Left Side	40620	16.93	17.50	1.140	0.103	0.118
	LTE Band 41/1RB#0 20M	Right Side	40620	16.93	17.50	1.140	0.288	0.331
	LTE Band 41/1RB#0 20M	Bottom Side	40620	16.93	17.50	1.140	0.520	0.597
	LTE Band 41/1RB#0 20M	Back Side	39750	16.83	17.50	1.167	0.871	1.022
	LTE Band 41/1RB#0 20M	Back Side	40185	16.89	17.50	1.151	0.880	1.019
	LTE Band 41/1RB#0 20M	Back Side	41055	16.90	17.50	1.148	0.845	0.976
	LTE Band 41/1RB#0 20M	Back Side	41490	16.88	17.50	1.153	0.895	1.039
	LTE Band 41/50RB#0 20M	Front Side	40620	15.95	16.50	1.135	0.306	0.349
	LTE Band 41/50RB#0 20M	Back Side	40620	15.95	16.50	1.135	0.777	0.887
	LTE Band 41/50RB#0 20M	Left Side	40620	15.95	16.50	1.135	0.066	0.075
	LTE Band 41/50RB#0 20M	Right Side	40620	15.95	16.50	1.135	0.211	0.241
	LTE Band 41/50RB#0 20M	Bottom Side	40620	15.95	16.50	1.135	0.544	0.621
	LTE Band 41/50RB#0 20M	Back Side	39750	15.74	16.50	1.191	0.679	0.814
	LTE Band 41/50RB#0 20M	Back Side	40185	15.71	16.50	1.199	0.772	0.932
	LTE Band 41/50RB#0 20M	Back Side	41055	15.70	16.50	1.202	0.741	0.896
	LTE Band 41/50RB#0 20M	Back Side	41490	15.73	16.50	1.194	0.756	0.908
	LTE Band 41/100RB#0 20M	Back Side	41490	15.88	16.50	1.153	0.652	0.757
Reduced Power (HPUE)								
	LTE Band 41/1RB#0 20M	Front Side	40620	20.80	21.50	1.175	0.417	0.493
	LTE Band 41/1RB#0 20M	Back Side	40620	20.80	21.50	1.175	0.881	1.041
	LTE Band 41/1RB#0 20M	Left Side	40620	20.80	21.50	1.175	0.079	0.093
	LTE Band 41/1RB#0 20M	Right Side	40620	20.80	21.50	1.175	0.383	0.452
	LTE Band 41/1RB#0 20M	Bottom Side	40620	20.80	21.50	1.175	0.651	0.769
	LTE Band 41/1RB#0 20M	Back Side	39750	20.68	21.50	1.208	0.831	1.010
23#	LTE Band 41/1RB#0 20M	Back Side	40185	20.74	21.50	1.191	0.930	1.115
	LTE Band 41/1RB#0 20M	Back Side	41055	20.78	21.50	1.180	0.823	0.977
	LTE Band 41/1RB#0 20M	Back Side	41490	20.77	21.50	1.183	0.797	0.949



	LTE Band 41/50RB#0 20M	Front Side	40620	19.80	20.50	1.175	0.400	0.473
	LTE Band 41/50RB#0 20M	Back Side	40620	19.80	20.50	1.175	0.711	0.840
	LTE Band 41/50RB#0 20M	Left Side	40620	19.80	20.50	1.175	0.060	0.071
	LTE Band 41/50RB#0 20M	Right Side	40620	19.80	20.50	1.175	0.302	0.357
	LTE Band 41/50RB#0 20M	Bottom Side	40620	19.80	20.50	1.175	0.620	0.733
	LTE Band 41/50RB#0 20M	Back Side	39750	19.59	20.50	1.233	0.720	0.893
	LTE Band 41/50RB#0 20M	Back Side	40185	19.56	20.50	1.242	0.771	0.963
	LTE Band 41/50RB#0 20M	Back Side	41055	19.55	20.50	1.245	0.690	0.864
	LTE Band 41/50RB#0 20M	Back Side	41490	19.58	20.50	1.236	0.711	0.884
	LTE Band 41/100RB#0 20M	Back Side	40185	19.73	20.50	1.194	0.620	0.745
Reduced Power								
	LTE Band 66/1RB#0 20M	Front Side	132322	20.86	21.50	1.159	0.864	1.001
	LTE Band 66/1RB#0 20M	Back Side	132322	20.86	21.50	1.159	0.959	1.111
	LTE Band 66/1RB#0 20M	Left Side	132322	20.86	21.50	1.159	0.109	0.126
	LTE Band 66/1RB#0 20M	Right Side	132322	20.86	21.50	1.159	0.066	0.076
	LTE Band 66/1RB#0 20M	Bottom Side	132322	20.86	21.50	1.159	0.406	0.470
	LTE Band 66/1RB#0 20M	Front Side	132072	20.77	21.50	1.183	0.816	0.966
	LTE Band 66/1RB#0 20M	Front Side	132572	20.79	21.50	1.178	0.840	0.989
	LTE Band 66/1RB#0 20M	Back Side	132072	20.77	21.50	1.183	0.810	0.959
24#	LTE Band 66/1RB#0 20M	Back Side	132572	20.79	21.50	1.178	0.951	1.120
	LTE Band 66/50RB#0 20M	Front Side	132322	19.90	20.50	1.148	0.800	0.919
	LTE Band 66/50RB#0 20M	Back Side	132322	19.90	20.50	1.148	0.910	1.045
	LTE Band 66/50RB#0 20M	Left Side	132322	19.90	20.50	1.148	0.089	0.102
	LTE Band 66/50RB#0 20M	Right Side	132322	19.90	20.50	1.148	0.056	0.064
	LTE Band 66/50RB#0 20M	Bottom Side	132322	19.90	20.50	1.148	0.320	0.367
	LTE Band 66/50RB#0 20M	Front Side	132072	19.81	20.50	1.172	0.761	0.892
	LTE Band 66/50RB#0 20M	Front Side	132572	19.79	20.50	1.178	0.744	0.876
	LTE Band 66/50RB#0 20M	Back Side	132072	19.81	20.50	1.172	0.765	0.897
	LTE Band 66/50RB#0 20M	Back Side	132572	19.79	20.50	1.178	0.800	0.942
	LTE Band 66/100RB#0 20M	Back Side	132572	19.75	20.50	1.189	0.705	0.838
	LTE Band 71/1RB#0 20M	Front Side	133322	23.80	24.50	1.175	0.394	0.463
25#	LTE Band 71/1RB#0 20M	Back Side	133322	23.80	24.50	1.175	0.669	0.786
	LTE Band 71/1RB#0 20M	Left Side	133322	23.80	24.50	1.175	0.214	0.251
	LTE Band 71/1RB#0 20M	Right Side	133322	23.80	24.50	1.175	0.189	0.222
	LTE Band 71/1RB#0 20M	Bottom Side	133322	23.80	24.50	1.175	0.101	0.119



	LTE Band 71/50RB#0 20M	Front Side	133322	23.03	23.50	1.114	0.358	0.399
	LTE Band 71/50RB#0 20M	Back Side	133322	23.03	23.50	1.114	0.572	0.637
	LTE Band 71/50RB#0 20M	Left Side	133322	23.03	23.50	1.114	0.184	0.205
	LTE Band 71/50RB#0 20M	Right Side	133322	23.03	23.50	1.114	0.163	0.181
	LTE Band 71/50RB#0 20M	Bottom Side	133322	23.03	23.50	1.114	0.087	0.097

➤ **WLAN Body SAR**

Plot No.	Band/Mode	Test Position	CH.	Ave. Power (dBm)	Tune-up Limit (dBm)	Tune-up Scaling Factor	Meas. SAR _{1g} (W/kg)	Reported SAR _{1g} (W/kg)
	WLAN2.4GHz/802.11b	Front Side	11	16.47	17.00	1.130	0.034	0.039
26#	WLAN2.4GHz/802.11b	Back Side	11	16.47	17.00	1.130	0.082	0.093
	WLAN2.4GHz/802.11b	Left Side	11	16.47	17.00	1.130	0.048	0.054
	WLAN2.4GHz/802.11b	Top Side	11	16.47	17.00	1.130	0.022	0.025
	Bluetooth/DH5	Front Side	78	9.26	10.00	1.186	0.005	0.007
27#	Bluetooth/DH5	Back Side	78	9.26	10.00	1.186	0.007	0.011
	Bluetooth/DH5	Left Side	78	9.26	10.00	1.186	0.004	0.007
	Bluetooth/DH5	Top Side	78	9.26	10.00	1.186	0.006	0.010

Note:

1. For TDD-LTE, the reported SAR should be scaled with the duty cycle scaling factor 1.006.
2. The 2.4G WLAN reported 1g SAR (W/kg) should be scaled with the duty cycle scaling factor 1.005, Bluetooth with 1.302.



16.4. Repeated SAR Assessment

➤ General Note

In accordance with published RF Exposure KDB procedure 865664 D01 SAR measurement 100 MHz to 6 GHz. These additional measurements are repeated after the completion of all measurements requiring the same head or body tissue-equivalent medium in a frequency band. The test device should be returned to ambient conditions (normal room temperature) with the battery fully charged before it is re-mounted on the device holder for the repeated measurement(s) to minimize any unexpected variations in the repeated results.

1. Repeated measurement is not required when the original highest measured SAR is < 0.80 W/kg;
2. When the original highest measured SAR is ≥ 0.80 W/kg, repeat that measurement once.
3. Perform a second repeated measurement only if the ratio of largest to smallest SAR for the original and first repeated measurements is > 1.20 or when the original or repeated measurement is ≥ 1.45 W/kg ($\sim 10\%$ from the 1-g SAR limit).
4. Perform a third repeated measurement only if the original, first or second repeated measurement is ≥ 1.5 W/kg and the ratio of largest to smallest SAR for the original, first and second repeated measurements is > 1.20 .

➤ Test Results

Plot No.	Band/Mode	Test Position	CH.	Ave. Power (dBm)	Tune-up Limit (dBm)	Tune-up Scaling Factor	Meas. SAR _{1g} (W/kg)	Reported SAR _{1g} (W/kg)
OR.	LTE Band 12/1RB#0 10M	Left Cheek	23095	23.96	24.50	1.132	0.957	1.084
1 st	LTE Band 12/1RB#0 10M	Left Cheek	23095	23.96	24.50	1.132	0.941	1.066
OR.	GPRS 1900(4 TX slots)	Back Side	512	25.92	26.50	1.143	1.030	1.177
1 st	GPRS 1900(4 TX slots)	Back Side	512	25.92	26.50	1.143	0.993	1.135
Reduced Power								
OR.	Band II/RMC 12.2Kbps	Front Side	9538	21.23	22.00	1.194	0.921	1.100
1 st	Band II/RMC 12.2Kbps	Front Side	9538	21.23	22.00	1.194	0.901	1.076
OR.	Band V/RMC 12.2Kbps	Back Side	4132	23.25	24.00	1.189	0.961	1.142
1 st	Band V/RMC 12.2Kbps	Back Side	4132	23.25	24.00	1.189	0.947	1.126
OR.	LTE Band 5/1RB#0 10M	Back Side	20525	23.93	24.50	1.140	1.030	1.174
1 st	LTE Band 5/1RB#0 10M	Back Side	20525	23.93	24.50	1.140	1.003	1.144
OR.	LTE Band 12/1RB#0 10M	Back Side	23095	23.96	24.50	1.132	1.050	1.189
1 st	LTE Band 12/1RB#0 10M	Back Side	23095	23.96	24.50	1.132	1.011	1.145



OR.	LTE Band 25/1RB#0 20M	Front Side	26590	21.38	22.00	1.153	0.961	1.108
1 st	LTE Band 25/1RB#0 20M	Front Side	26590	21.38	22.00	1.153	0.947	1.092
OR.	LTE Band 26/1RB#0 15M	Back Side	26865	23.86	24.50	1.159	1.020	1.182
1 st	LTE Band 26/1RB#0 15M	Back Side	26865	23.86	24.50	1.159	0.992	1.150
Reduced Power								
OR.	LTE Band 41/1RB#0 20M	Back Side	41490	16.88	17.50	1.153	0.895	1.039
1 st	LTE Band 41/1RB#0 20M	Back Side	41490	16.88	17.50	1.153	0.878	1.019
Reduced Power (HPUE)								
OR.	LTE Band 41/1RB#0 20M	Back Side	40185	20.74	21.50	1.191	0.930	1.115
1 st	LTE Band 41/1RB#0 20M	Back Side	40185	20.74	21.50	1.191	0.917	1.099
Reduced Power								
OR.	LTE Band 66/1RB#0 20M	Back Side	132572	20.79	21.50	1.178	0.951	1.120
1 st	LTE Band 66/1RB#0 20M	Back Side	132572	20.79	21.50	1.178	0.935	1.101



17. Simultaneous Transmission Evaluation

17.1. Simultaneous Transmission Consideration

No.	Simultaneous Transmission Consideration	Head	Body-Worn	Hotspot
1	WWAN+WLAN 2.4GHz	Yes	Yes	Yes
2	WWAN+Bluetooth	No	Yes	Yes

Note:

1. When the user enables the personal wireless router functions for the handset, actual operations include simultaneous transmission of the WWAN and WLAN transmitters. The "Portable Hotspot" feature on the handset was NOT activated, to ensure the SAR measurements were evaluated for a single transmission frequency RF signal.
2. The hotspot SAR result may overlap with the body-worn accessory SAR requirements, per KDB 941225 D06, the more conservative configurations can be considered, thus excluding some unnecessary body-worn accessory SAR tests.
3. Simultaneous Transmission SAR evaluation is not required for BT and WLAN, because the software mechanism have been incorporated to guarantee that the WLAN and Bluetooth transmitters would not simultaneously operate.
4. Per KDB 447498D04v01, simultaneous transmission SAR evaluation procedures is as followed:
Step 1: If sum of 1 g SAR < 1.6 W/kg, Simultaneous SAR measurement is not required.
Step 2: If sum of 1 g SAR > 1.6 W/kg, ratio of SAR to peak separation distance for pair of transmitters calculated.
Step 3: If the ratio of SAR to peak separation distance is ≤ 0.04 , Simultaneous SAR measurement is not required.
Step 4: If the ratio of SAR to peak separation distance is > 0.04 , Simultaneous SAR measurement is required and simultaneous transmission SAR value is calculated.
(The ratio is determined by: $(SAR1 + SAR2) \wedge 1.5/R_i \leq 0.04$,
 R_i is the separation distance between the peak SAR locations for the antenna pair in mm.

17.2. Simultaneous Transmission Analysis

➤ Head Simultaneous Transmission for WWAN(2/3/4G)+WLAN 2.4GHz

WWAN Band	Exposure Position	1	2	1+2 Summed 1g SAR (W/kg)
		WWAN	2.4GHz WLAN	
		1g SAR (W/kg)	1g SAR (W/kg)	
GSM 850	Right Cheek	0.652	0.128	0.780
	Right Tilt	0.356	0.028	0.384
	Left Cheek	0.694	0.311	1.005
	Left Tilt	0.208	0.021	0.229
GSM 1900	Right Cheek	0.753	0.128	0.881
	Right Tilt	0.286	0.028	0.314
	Left Cheek	0.829	0.311	1.140
	Left Tilt	0.189	0.021	0.210
WCDMA II	Right Cheek	0.170	0.128	0.298
	Right Tilt	0.078	0.028	0.106
	Left Cheek	0.517	0.311	0.828
	Left Tilt	0.084	0.021	0.105
WCDMA IV	Right Cheek	0.286	0.128	0.414
	Right Tilt	0.276	0.028	0.304
	Left Cheek	0.396	0.311	0.707
	Left Tilt	0.171	0.021	0.192
WCDMA V	Right Cheek	0.516	0.128	0.644
	Right Tilt	0.313	0.028	0.341
	Left Cheek	0.719	0.311	1.030
	Left Tilt	0.107	0.021	0.128
LTE Band 5	Right Cheek	0.431	0.128	0.559
	Right Tilt	0.285	0.028	0.313
	Left Cheek	0.572	0.311	0.883
	Left Tilt	0.430	0.021	0.451
LTE Band 12	Right Cheek	0.562	0.128	0.690
	Right Tilt	0.277	0.028	0.305
	Left Cheek	1.084	0.311	1.395
	Left Tilt	0.758	0.021	0.779
LTE Band 25/2	Right Cheek	0.194	0.128	0.322
	Right Tilt	0.106	0.028	0.134
	Left Cheek	0.301	0.311	0.612
	Left Tilt	0.094	0.021	0.115
LTE Band 26	Right Cheek	0.442	0.128	0.570
	Right Tilt	0.076	0.028	0.104



	Left Cheek	0.512	0.311	0.823
	Left Tilt	0.218	0.021	0.239
LTE Band 41	Right Cheek	0.499	0.128	0.627
	Right Tilt	0.316	0.028	0.344
	Left Cheek	0.509	0.311	0.820
	Left Tilt	0.337	0.021	0.358
LTE Band 66/4	Right Cheek	0.473	0.128	0.601
	Right Tilt	0.327	0.028	0.355
	Left Cheek	0.372	0.311	0.683
	Left Tilt	0.169	0.021	0.190
LTE Band 71	Right Cheek	0.465	0.128	0.593
	Right Tilt	0.089	0.028	0.117
	Left Cheek	0.520	0.311	0.831
	Left Tilt	0.085	0.021	0.106

➤ **Body Simultaneous Transmission for WWAN+WLAN 2.4GHz/Bluetooth**

WWAN Band	Exposure Position	1	2	3	1+2 Summed 1g SAR (W/kg)	1+3 Summed 1g SAR (W/kg)
		WWAN	2.4GHz WLAN	Bluetooth		
		1g SAR (W/kg)	1g SAR (W/kg)	1g SAR (W/kg)		
GSM 850	Front Side	0.583	0.039	0.007	0.622	0.590
	Back Side	0.829	0.093	0.011	0.922	0.840
	Left Side	0.571	0.054	0.007	0.625	0.578
	Right Side	0.570			0.570	0.570
	Top Side		0.025	0.010	0.025	0.010
	Bottom Side	0.622			0.622	0.622
GSM 1900	Front Side	1.055	0.039	0.007	1.094	1.062
	Back Side	1.177	0.093	0.011	1.270	1.188
	Left Side	0.727	0.054	0.007	0.781	0.734
	Right Side	0.743			0.743	0.743
	Top Side		0.025	0.010	0.025	0.010
	Bottom Side	0.622			0.622	0.622
WCDMA II	Front Side	1.100	0.039	0.007	1.139	1.107
	Back Side	0.950	0.093	0.011	1.043	0.961
	Left Side	0.244	0.054	0.007	0.298	0.251
	Right Side	0.536			0.536	0.536
	Top Side		0.025	0.010	0.025	0.010
	Bottom Side	0.278			0.278	0.278
WCDMA IV	Front Side	0.908	0.039	0.007	0.947	0.915
	Back Side	0.597	0.093	0.011	0.690	0.608
	Left Side	0.041	0.054	0.007	0.095	0.048



	Right Side	0.134			0.134	0.134
	Top Side		0.025	0.010	0.025	0.010
	Bottom Side	0.254			0.254	0.254
WCDMA V	Front Side	0.575	0.039	0.007	0.614	0.582
	Back Side	1.142	0.093	0.011	1.235	1.153
	Left Side	0.562	0.054	0.007	0.616	0.569
	Right Side	0.560			0.560	0.560
	Top Side		0.025	0.010	0.025	0.010
	Bottom Side	0.139			0.139	0.139
LTE Band 5	Front Side	0.653	0.039	0.007	0.692	0.660
	Back Side	1.174	0.093	0.011	1.267	1.185
	Left Side	0.751	0.054	0.007	0.805	0.758
	Right Side	0.655			0.655	0.655
	Top Side		0.025	0.010	0.025	0.010
	Bottom Side	0.172			0.172	0.172
LTE Band 12	Front Side	0.632	0.039	0.007	0.671	0.639
	Back Side	1.189	0.093	0.011	1.282	1.200
	Left Side	0.458	0.054	0.007	0.512	0.465
	Right Side	0.457			0.457	0.457
	Top Side		0.025	0.010	0.025	0.010
	Bottom Side	0.128			0.128	0.128
LTE Band 25/2	Front Side	0.349	0.039	0.007	0.388	0.356
	Back Side	1.039	0.093	0.011	1.132	1.050
	Left Side	0.118	0.054	0.007	0.172	0.125
	Right Side	0.331			0.331	0.331
	Top Side		0.025	0.010	0.025	0.010
	Bottom Side	0.621			0.621	0.621
LTE Band 26	Front Side	1.108	0.039	0.007	1.147	1.115
	Back Side	0.871	0.093	0.011	0.964	0.882
	Left Side	0.117	0.054	0.007	0.171	0.124
	Right Side	0.096			0.096	0.096
	Top Side		0.025	0.010	0.025	0.010
	Bottom Side	0.285			0.285	0.285
LTE Band 41	Front Side	0.676	0.039	0.007	0.715	0.683
	Back Side	1.182	0.093	0.011	1.275	1.193
	Left Side	0.783	0.054	0.007	0.837	0.790
	Right Side	0.592			0.592	0.592
	Top Side		0.025	0.010	0.025	0.010
	Bottom Side	0.156			0.156	0.156
LTE Band 66/4	Front Side	1.001	0.039	0.007	1.040	1.008
	Back Side	1.120	0.093	0.011	1.213	1.131



REPORT No.: SZ22060386S01

	Left Side	0.126	0.054	0.007	0.180	0.133
	Right Side	0.076			0.076	0.076
	Top Side		0.025	0.010	0.025	0.010
	Bottom Side	0.470			0.470	0.470
LTE Band 71	Front Side	0.463	0.039	0.007	0.502	0.470
	Back Side	0.786	0.093	0.011	0.879	0.797
	Left Side	0.251	0.054	0.007	0.305	0.258
	Right Side	0.222			0.222	0.222
	Top Side		0.025	0.010	0.025	0.010
	Bottom Side	0.119			0.119	0.119

18. Uncertainty Assessment

According to KDB 865664 D01 SAR measurement 100 MHz to 6GHz, when the highest measured 1-g SAR is less than 1.5 W/kg and 10-g extremity SAR less than 3.75 W/kg, the expanded SAR measurement uncertainty must be less than 30% with a confidence interval of $k=2$. When these conditions are met, extensive SAR measurement uncertainty analysis described in IEEE 1528-2013 is not required in the SAR report and submitted for equipment approval. For this device, both the 1-g SAR is less than 1.5 W/kg. Therefore the measurement uncertainty table is not required in this report.



Annex A General Information

1. Identification of the Responsible Testing Laboratory

Laboratory Name:	Shenzhen Morlab Communications Technology Co., Ltd.
Laboratory Address:	FL.3, Building A, FeiYang Science Park, No.8 LongChang Road, Block 67, BaoAn District, ShenZhen, GuangDong Province, P. R. China
Telephone:	+86 755 36698555
Facsimile:	+86 755 36698525

2. Identification of the Responsible Testing Location

Name:	Shenzhen Morlab Communications Technology Co., Ltd.
Address:	FL.3, Building A, FeiYang Science Park, No.8 LongChang Road, Block 67, BaoAn District, ShenZhen, GuangDong Province, P. R. China

3. Facilities and Accreditations

The FCC designation number is CN1192, the test firm registration number is 226174.

Note:

The main report is end here and the other Annex (B,C,D,E,F) will be submitted separately.

***** END OF MAIN REPORT *****