



EXHIBIT 7

Test Setup Photos

Applicant: Nortel Networks

**For Class II Permissive
Change on :**

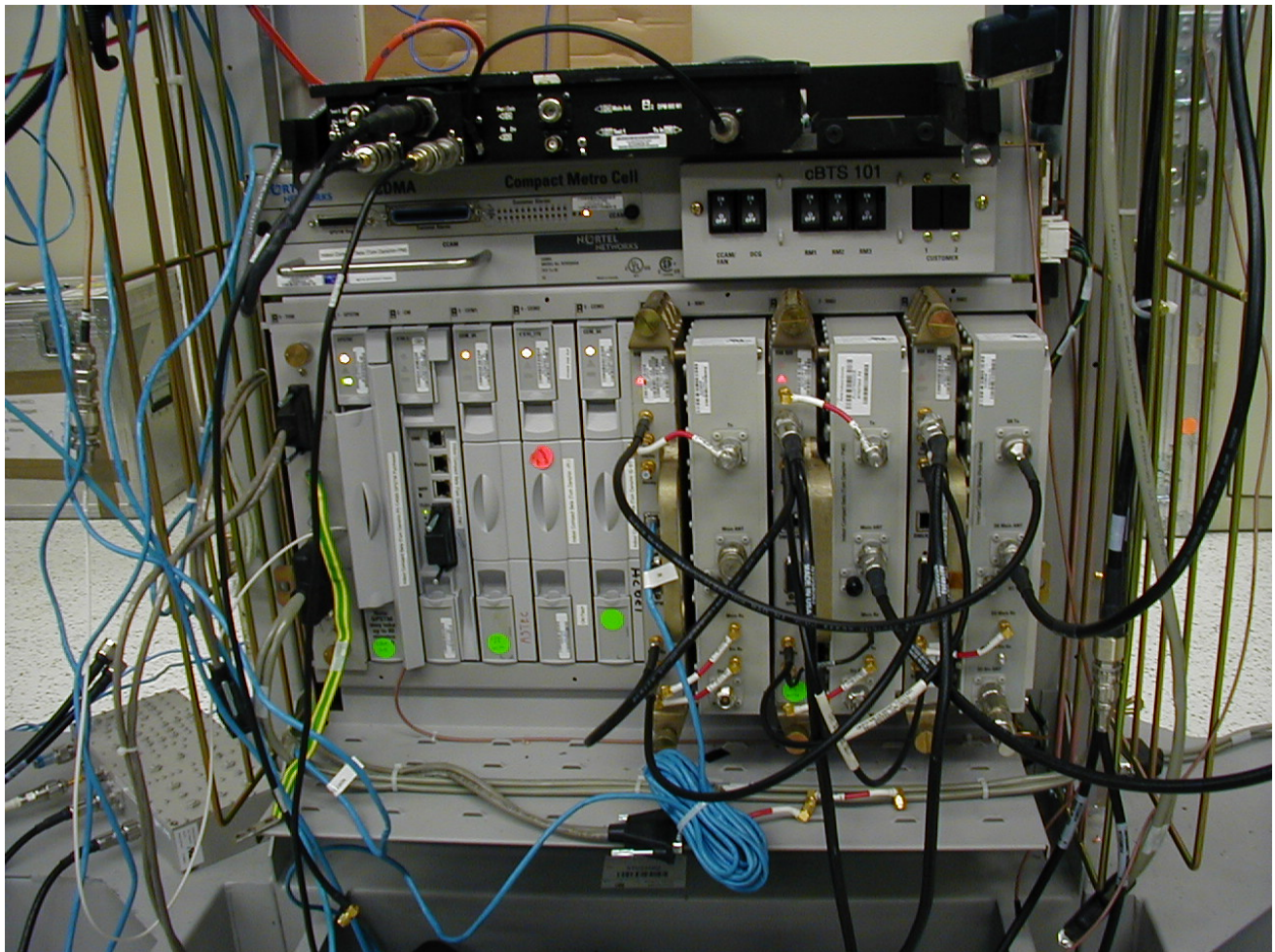
FCC: AB6NT1900RM-CBTS

IC: 332D-CBS1G9RM



**Test setup for the
Spurious Emission at Antenna Terminals**

This document contains Proprietary information of Nortel Networks. This information is considered to be confidential and should be treated appropriately.



Radio setup for the Spurious Emission at Antenna Terminals

This document contains Proprietary information of Nortel Networks. This information is considered to be confidential and should be treated appropriately.