

# RF Exposure Lab

802 N. Twin Oaks Valley Road, Suite 105 • San Marcos, CA 92069 • U.S.A.

TEL (760) 471-2100 • FAX (760) 471-2121

<http://www.rfexposurelab.com>

## CERTIFICATE OF COMPLIANCE SAR EVALUATION

Intel Mobile Communication  
100 Center Point Circle, Suite 200  
Columbia, SC 29210

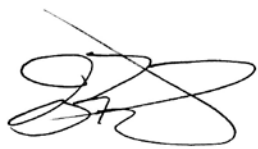
Dates of Test: June 22-25, 2015  
Test Report Number: SAR.20150612

FCC ID:	PD93165NG (Contains Model 3165NGW)
IC Certificate:	1000M-3165NG (Contains Model 3165NGW)
Model(s):	TPN-Q146
Contains WLAN Model(s):	Intel® Dual Band Wireless-AC 3165 (Model 3165NGW)
Test Sample:	Engineering Unit Same as Production
Serial Number:	5CD409167V
Equipment Type:	Wireless Module Installed in Notebook/Tablet
Classification:	Portable Transmitter Next to Body
TX Frequency Range:	2412 – 2462 MHz; 5180 – 5320 MHz; 5500 – 5700 MHz; 5745 – 5825 MHz
Frequency Tolerance:	± 2.5 ppm
Maximum RF Output:	2450 MHz (b) – 17.50 dB, 2450 MHz (g) – 17.50 dB, 2450 MHz (n20) – 17.50 dB, 2450 MHz (n40) – 17.50 dB, 5250 MHz (a) – 16.00 dB, 5250 MHz (n20) – 16.00 dB, 5250 MHz (n40) – 16.50 dB, 5600 MHz (a) – 16.00 dB, 5600 MHz (n20) – 16.00 dB, 5600 MHz (n40) – 16.50 dB, 5800 MHz (a) – 16.00 dB, 5800 MHz (n20) – 16.00 dB, 5800 MHz (n40) – 16.50 dB Conducted
Signal Modulation:	DSSS, OFDM
Antenna Type:	WNC, P/N 81EEAR15.G75 (Tx1 & Tx2); PIFA Antenna
Application Type:	Certification
FCC Rule Parts:	Part 2, 15C, 15E
KDB Test Methodology:	KDB 447498 D01 v05r02, KDB 248227 v02, KDB 616217 D04 v01
Industry Canada:	RSS-102 Issue 5, Safety Code 6
Maximum SAR Value:	1.06 W/kg Reported
Max. Simultaneous SAR:	0.02 Separation Ratio
Separation Distance:	3.7 mm

This wireless mobile and/or portable device has been shown to be compliant for localized specific absorption rate (SAR) for uncontrolled environment/general exposure limits specified in ANSI/IEEE Std. C95.1-1992 and had been tested in accordance with the measurement procedures specified in IEEE 1528-2013 and IEC 62209-2:2010 (See test report).

I attest to the accuracy of the data. All measurements were performed by myself or were made under my supervision and are correct to the best of my knowledge and belief. I assume full responsibility for the completeness of these measurements and vouch for the qualifications of all persons taking them.

RF Exposure Lab, LLC certifies that no party to this application is subject to a denial of Federal benefits that includes FCC benefits pursuant to Section 5301 of the Anti-Drug Abuse Act of 1988, 21 U.S.C. 853(a).



Jay M. Moulton  
Vice President



Testing Cert. # 2387.01

## Table of Contents

1. Introduction .....	3
SAR Definition [5].....	4
2. SAR Measurement Setup .....	5
Robotic System .....	5
System Hardware.....	5
System Electronics.....	6
Probe Measurement System.....	6
3. Probe and Dipole Calibration.....	14
4. Phantom & Simulating Tissue Specifications.....	15
Head & Body Simulating Mixture Characterization .....	15
5. ANSI/IEEE C95.1 – 1992 RF Exposure Limits [2].....	16
Uncontrolled Environment .....	16
Controlled Environment.....	16
6. Measurement Uncertainty .....	17
7. System Validation.....	18
Tissue Verification.....	18
Test System Verification.....	18
8. SAR Test Data Summary .....	19
Procedures Used To Establish Test Signal .....	19
Device Test Condition .....	19
SAR Data Summary – 2450 MHz Body 802.11b & BT .....	36
SAR Data Summary – 5250 MHz Body 802.11a .....	37
SAR Data Summary – 5600 MHz Body 802.11a .....	38
SAR Data Summary – 5800 MHz Body 802.11a .....	39
SAR Data Summary – Simultaneous Evaluation .....	40
9. Test Equipment List.....	41
10. Conclusion .....	42
11. References.....	43
Appendix A – System Validation Plots and Data .....	44
Appendix B – SAR Test Data Plots .....	54
Appendix C – SAR Test Setup Photos .....	59
Appendix D – Probe Calibration Data Sheets.....	64
Appendix E – Dipole Calibration Data Sheets .....	76
Appendix F – Phantom Calibration Data Sheets .....	99
Appendix G – MPE Calculations .....	101
Appendix H – Validation Summary.....	102

## 1. Introduction

This measurement report shows compliance of the Intel Mobile Communications Model 3165NGW installed in HP Model TPN-Q146 FCC ID: PD93165NG with FCC Part 2, 1093, ET Docket 93-62 Rules for mobile and portable devices and IC Certificate: 1000M-3165NG with RSS102 Issue 5 & Safety Code 6. The FCC have adopted the guidelines for evaluating the environmental effects of radio frequency radiation in ET Docket 93-62 on August 6, 1996 to protect the public and workers from the potential hazards of RF emissions due to FCC regulated portable devices. [1], [6]

The test results recorded herein are based on a single type test of Intel Mobile Communications Model 3165NGW installed in HP Model TPN-Q146 and therefore apply only to the tested sample.

The test procedures, as described in ANSI C95.1 – 1999 Standard for Safety Levels with Respect to Human Exposure to Radio Frequency Electromagnetic Fields, 3 kHz to 300 GHz [2], ANSI C95.3 – 2002 Recommended Practice for the Measurement of Potentially Hazardous Electromagnetic Fields [3], IEEE Std.1528 – 2003 Recommended Practice [4], and Industry Canada Safety Code 6 Limits of Human Exposure to Radiofrequency Electromagnetic Fields in the Frequency Range from 3kHz to 300 GHz were employed.

The following table indicates all the wireless technologies operating in the 3165NGW installed in HP Model TPN-Q146 wireless modem. The table also shows the tolerance for the power level for each mode.

Band	Technology	Class	3GPP Nominal Power dBm	Setpoint Nominal Power dBm	Tolerance dBm	Lower Tolerance dBm	Upper Tolerance dBm
WLAN – 2.4 GHz	802.11b	N/A	N/A	14	±1.5	12.5	15.5
WLAN – 2.4 GHz	802.11g/n(Ch. 1 and 11)	N/A	N/A	12	±1.5	10.5	13.5
WLAN – 2.4 GHz	802.11 g/n(Ch. 2-10)	N/A	N/A	15	±1.5	13.5	16.5
WLAN – 5 GHz	802.11a	N/A	N/A	13	±1.5	11.5	14.5
WLAN – 5 GHz	802.11n	N/A	N/A	15	±1.5	13.5	16.5

## SAR Definition [5]

Specific Absorption Rate is defined as the time derivative (rate) of the incremental energy ( $dW$ ) absorbed by (dissipated in) an incremental mass ( $dm$ ) contained in a volume element ( $dV$ ) of a given density ( $\rho$ ).

$$SAR = \frac{d}{dt} \left( \frac{dW}{dm} \right) = \frac{d}{dt} \left( \frac{dW}{\rho dV} \right)$$

SAR is expressed in units of watts per kilogram (W/kg). SAR can be related to the electric field at a point by

$$SAR = \frac{\sigma |E|^2}{\rho}$$

where:

$\sigma$  = conductivity of the tissue (S/m)

$\rho$  = mass density of the tissue (kg/m<sup>3</sup>)

$E$  = rms electric field strength (V/m)

## 2. SAR Measurement Setup

### Robotic System

These measurements are performed using the DASY52 automated dosimetric assessment system. The DASY52 is made by Schmid & Partner Engineering AG (SPEAG) in Zurich, Switzerland and consists of high precision robotics system (Staubli), robot controller, Intel Core2 computer, near-field probe, probe alignment sensor, and the generic twin phantom containing the brain equivalent material. The robot is a six-axis industrial robot performing precise movements to position the probe to the location (points) of maximum electromagnetic field (EMF) (see Fig. 2.1).

### System Hardware

A cell controller system contains the power supply, robot controller teach pendant (Joystick), and a remote control used to drive the robot motors. The PC consists of the HP Intel Core2 computer with Windows XP system and SAR Measurement Software DASY52, A/D interface card, monitor, mouse, and keyboard. The Staubli Robot is connected to the cell controller to allow software manipulation of the robot. A data acquisition electronic (DAE) circuit that performs the signal amplification, signal multiplexing, AD-conversion, offset measurements, mechanical surface detection, collision detection, etc. is connected to the Electro-optical coupler (EOC). The EOC performs the conversion from the optical into digital electric signal of the DAE and transfers data to the PC plug-in card.



**Figure 2.1 SAR Measurement System Setup**

## System Electronics

The DAE4 consists of a highly sensitive electrometer-grade preamplifier with auto-zeroing, a channel and gain-switching multiplexer, a fast 16 bit AD-converter and a command decoder and control logic unit. Transmission to the PC-card is accomplished through an optical downlink for data and status information and an optical uplink for commands and clock lines. The mechanical probe mounting device includes two different sensor systems for frontal and sidewise probe contacts. They are also used for mechanical surface detection and probe collision detection. The robot uses its own controller with a built in VME-bus computer. The system is described in detail in.

## Probe Measurement System

The SAR measurements were conducted with the dosimetric probe EX3DV4, designed in the classical triangular configuration (see Fig. 2.2) and optimized for dosimetric evaluation. The probe is constructed using the thick film technique; with printed resistive lines on ceramic substrates. The probe is equipped with an optical multi fiber line ending at the front of the probe tip. (see Fig. 2.3) It is connected to the EOC box on the robot arm and provides an automatic detection of the phantom surface. Half of the fibers are connected to a pulsed infrared transmitter, the other half to a synchronized receiver. As the probe approaches the surface, the reflection from the surface produces a coupling from the transmitting to the receiving fibers. This reflection increases first during the approach, reaches maximum and then decreases. If the probe is flatly touching the surface, the coupling is zero. The distance of the coupling maximum to the surface is independent of the surface reflectivity and largely independent of the surface to probe angle. The DASY52 software reads the reflection during a software approach and looks for the maximum using a 2nd order fitting. The approach is stopped at reaching the maximum.



**DAE System**

**Probe Specifications**

**Calibration:** In air from 10 MHz to 6.0 GHz  
In brain and muscle simulating tissue at Frequencies of 450 MHz, 835 MHz, 1750 MHz, 1900 MHz, 2450 MHz, 2600 MHz, 3500 MHz, 5200 MHz, 5300 MHz, 5600 MHz, 5800 MHz

**Frequency:** 10 MHz to 6 GHz

**Linearity:**  $\pm 0.2\text{dB}$  (30 MHz to 6 GHz)

**Dynamic:** 10 mW/kg to 100 W/kg

**Range:** Linearity:  $\pm 0.2\text{dB}$

**Dimensions:** Overall length: 330 mm

**Tip length:** 20 mm

**Body diameter:** 12 mm

**Tip diameter:** 2.5 mm

**Distance from probe tip to sensor center:** 1 mm

**Application:** SAR Dosimetry Testing  
Compliance tests of wireless device



**Figure 2.2 Triangular Probe Configurations**



**Figure 2.3 Probe Thick-Film Technique**



## Probe Calibration Process

### Dosimetric Assessment Procedure

Each probe is calibrated according to a dosimetric assessment procedure described in with accuracy better than +/- 10%. The spherical isotropy was evaluated with the procedure described in and found to be better than +/-0.25dB. The sensitivity parameters (Norm X, Norm Y, Norm Z), the diode compression parameter (DCP) and the conversion factor (Conv F) of the probe is tested.

### Free Space Assessment

The free space E-field from amplified probe outputs is determined in a test chamber. This is performed in a TEM cell for frequencies below 1 GHz, and in a waveguide above 1GHz for free space. For the free space calibration, the probe is placed in the volumetric center of the cavity at the proper orientation with the field. The probe is then rotated 360 degrees until the three channels show the maximum reading. The power density readings equates to 1 mW/cm<sup>2</sup>.

### Temperature Assessment \*

E-field temperature correlation calibration is performed in a flat phantom filled with the appropriate simulated brain tissue. The measured free space E-field in the medium, correlates to temperature rise in a dielectric medium. For temperature correlation calibration a RF transparent thermistor based temperature probe is used in conjunction with the E-field probe

$$SAR = C \frac{\Delta T}{\Delta t}$$

$$SAR = \frac{|E|^2 \cdot \sigma}{\rho}$$

where:

where:

$\Delta t$  = exposure time (30 seconds),

$\sigma$  = simulated tissue conductivity,

$C$  = heat capacity of tissue (brain or muscle),

$\rho$  = Tissue density (1.25 g/cm<sup>3</sup> for brain tissue)

$\Delta T$  = temperature increase due to RF exposure.

SAR is proportional to  $\Delta T / \Delta t$ , the initial rate of tissue heating, before thermal diffusion takes place.

Now it's possible to quantify the electric field in the simulated tissue by equating the thermally derived SAR to the E- field;



**Figure 2.4 E-Field and Temperature Measurements at 900MHz**



**Figure 2.5 E-Field and Temperature Measurements at 1800MHz**



## Data Extrapolation

The DASY52 software automatically executes the following procedures to calculate the field units from the microvolt readings at the probe connector. The first step of the evaluation is a linearization of the filtered input signal to account for the compression characteristics of the detector diode. The compensation depends on the input signal, the diode type and the DC-transmission factor from the diode to the evaluation electronics. If the exciting field is pulsed, the crest factor of the signal must be known to correctly compensate for peak power. The formula for each channel can be given like below;

$$V_i = U_i + U_i^2 \cdot \frac{cf}{dcp_i}$$

with  $V_i$  = compensated signal of channel i (i=x,y,z)  
 $U_i$  = input signal of channel i (i=x,y,z)  
 $cf$  = crest factor of exciting field (DASY parameter)  
 $dcp_i$  = diode compression point (DASY parameter)

From the compensated input signals the primary field data for each channel can be evaluated:

E-field probes:

$$E_i = \sqrt{\frac{V_i}{Norm_i \cdot ConvF}}$$

with  $V_i$  = compensated signal of channel i (i = x,y,z)  
 $Norm_i$  = sensor sensitivity of channel i (i = x,y,z)  
 $\mu V/(V/m)^2$  for E-field probes  
 $ConvF$  = sensitivity of enhancement in solution  
 $E_i$  = electric field strength of channel i in V/m

The RSS value of the field components gives the total field strength (Hermetian magnitude):

$$E_{tot} = \sqrt{E_x^2 + E_y^2 + E_z^2}$$

The primary field data are used to calculate the derived field units.

$$SAR = E_{tot}^2 \cdot \frac{\sigma}{\rho \cdot 1000}$$

with  $SAR$  = local specific absorption rate in W/g  
 $E_{tot}$  = total field strength in V/m  
 $\sigma$  = conductivity in [mho/m] or [Siemens/m]  
 $\rho$  = equivalent tissue density in g/cm<sup>3</sup>

The power flow density is calculated assuming the excitation field to be a free space field.

$$P_{free} = \frac{E_{tot}^2}{3770}$$

with  $P_{pwe}$  = equivalent power density of a plane wave in W/cm<sup>2</sup>  
 $E_{tot}$  = total electric field strength in V/m

## Scanning procedure

- The DASY installation includes predefined files with recommended procedures for measurements and system check. They are read-only document files and destined as fully defined but unmeasured masks. All test positions (head or body-worn) are tested with the same configuration of test steps differing only in the grid definition for the different test positions.
- The „reference“ and „drift“ measurements are located at the beginning and end of the batch process. They measure the field drift at one single point in the liquid over the complete procedure. The indicated drift is mainly the variation of the DUT's output power and should vary max. +/- 5 %.
- The highest integrated SAR value is the main concern in compliance test applications. These values can mostly be found at the inner surface of the phantom and cannot be measured directly due to the sensor offset in the probe. To extrapolate the surface values, the measurement distances to the surface must be known accurately. A distance error of 0.5mm could produce SAR errors of 6% at 1800 MHz. Using predefined locations for measurements is not accurate enough. Any shift of the phantom (e.g., slight deformations after filling it with liquid) would produce high uncertainties. For an automatic and accurate detection of the phantom surface, the DASY5 system uses the mechanical surface detection. The detection is always at touch, but the probe will move backward from the surface the indicated distance before starting the measurement.
- The „area scan“ measures the SAR above the DUT or verification dipole on a parallel plane to the surface. It is used to locate the approximate location of the peak SAR with 2D spline interpolation. The robot performs a stepped movement along one grid axis while the local electrical field strength is measured by the probe. The probe is touching the surface of the SAM during acquisition of measurement values. The scan uses different grid spacings for different frequency measurements. Standard grid spacing for head measurements in frequency ranges  $\leq 2$ GHz is 15 mm in x - and y- dimension. For higher frequencies a finer resolution is needed, thus for the grid spacing is reduced according the following table:

Area scan grid spacing for different frequency ranges	
Frequency range	Grid spacing
$\leq 2$ GHz	$\leq 15$ mm
2 – 4 GHz	$\leq 12$ mm
4 – 6 GHz	$\leq 10$ mm

Grid spacing and orientation have no influence on the SAR result. For special applications where the standard scan method does not find the peak SAR within the grid, e.g. mobile phones with flip cover, the grid can be adapted in orientation. Results of this coarse scan are shown in annex B.

- A „zoom scan” measures the field in a volume around the 2D peak SAR value acquired in the previous „coarse” scan. It uses a fine meshed grid where the robot moves the probe in steps along all the 3 axis (x,y and z-axis) starting at the bottom of the Phantom. The grid spacing for the cube measurement is varied according to the measured frequency range, the dimensions are given in the following table:

<b>Zoom scan grid spacing and volume for different frequency ranges</b>			
Frequency range	Grid spacing for x, y axis	Grid spacing for z axis	Minimum zoom scan volume
≤ 2 GHz	≤ 8 mm	≤ 5 mm	≥ 30 mm
2 – 3 GHz	≤ 5 mm	≤ 5 mm	≥ 28 mm
3 – 4 GHz	≤ 5 mm	≤ 4 mm	≥ 28 mm
4 – 5 GHz	≤ 4 mm	≤ 3 mm	≥ 25 mm
5 – 6 GHz	≤ 4 mm	≤ 2 mm	≥ 22 mm

DASY is also able to perform repeated zoom scans if more than 1 peak is found during area scan. In this document, the evaluated peak 1g and 10g averaged SAR values are shown in the 2D-graphics in annex B. Test results relevant for the specified standard (see section 3) are shown in table form in section 7.

## Spatial Peak SAR Evaluation

The spatial peak SAR - value for 1 and 10 g is evaluated after the Cube measurements have been done. The basis of the evaluation are the SAR values measured at the points of the fine cube grid consisting of all points in the three directions x, y and z. The algorithm that finds the maximal averaged volume is separated into three different stages.

- The data between the dipole center of the probe and the surface of the phantom are extrapolated. This data cannot be measured since the center of the dipole is 1 to 2.7 mm away from the tip of the probe and the distance between the surface and the lowest measuring point is about 1 mm (see probe calibration sheet). The extrapolated data from a cube measurement can be visualized by selecting 'Graph Evaluated'.
- The maximum interpolated value is searched with a straight-forward algorithm. Around this maximum the SAR - values averaged over the spatial volumes (1g or 10 g) are computed using the 3d-spline interpolation algorithm. If the volume cannot be evaluated (i.e., if a part of the grid was cut off by the boundary of the measurement area) the evaluation will be started on the corners of the bottom plane of the cube.
- All neighboring volumes are evaluated until no neighboring volume with a higher average value is found.

## Extrapolation

The extrapolation is based on a least square algorithm [W. Gander, Computermathematik, p.168-180]. Through the points in the first 3 cm along the z-axis, polynomials of order four are calculated. These polynomials are then used to evaluate the points between the surface and the probe tip. The points, calculated from the surface, have a distance of 1 mm from each other.

## Interpolation

The interpolation of the points is done with a 3d-Spline. The 3d-Spline is composed of three one-dimensional splines with the "Not a knot"-condition [W. Gander, Computermathematik, p.141-150] (x, y and z -direction) [Numerical Recipes in C, Second Edition, p.123ff].

## Volume Averaging

At First the size of the cube is calculated. Then the volume is integrated with the trapezoidal algorithm. 8000 points (20x20x20) are interpolated to calculate the average.

## Advanced Extrapolation

DASY uses the advanced extrapolation option which is able to compensate boundary effects on E-field probes.

**SAM PHANTOM**

The SAM Twin Phantom V4.0 is constructed of a fiberglass shell integrated in a wooden table. The shape of the shell is based on data from an anatomical study designed to determine the maximum exposure in at least 90% of all users. It enables the dosimetric evaluation of left and right hand phone usage as well as body mounted usage at the flat phantom region. A cover prevents the evaporation of the liquid. Reference markings on the Phantom allow the complete setup of all predefined phantom positions and measurement grids by manually teaching three points in the robot. (see Fig. 2.6)

**Phantom Specification**

**Phantom:** SAM Twin Phantom (V4.0)  
**Shell Material:** Vivac Composite  
**Thickness:**  $2.0 \pm 0.2$  mm



**Figure 2.6 SAM Twin Phantom**

**Device Holder for Transmitters**

In combination with the SAM Twin Phantom V4.0 the Mounting Device (see Fig. 2.7), enables the rotation of the mounted transmitter in spherical coordinates whereby the rotation point is the ear opening. The devices can be easily, accurately, and repeatedly positioned according to the FCC, CENELEC, IEC and IEEE specifications. The device holder can be locked at different phantom locations (left head, right head, flat phantom).



**Figure 2.7 Mounting Device**

Note: A simulating human hand is not used due to the complex anatomical and geometrical structure of the hand that may produce infinite number of configurations. To produce the worst-case condition (the hand absorbs antenna output power), the hand is omitted during the tests.

### **3. Probe and Dipole Calibration**

**See Appendix D and E.**

## 4. Phantom & Simulating Tissue Specifications

### Head & Body Simulating Mixture Characterization

The head and body mixtures consist of the material based on the table listed below. The mixture is calibrated to obtain proper dielectric constant (permittivity) and conductivity of the desired tissue. Body tissue parameters that have not been specified in IEEE1528-2013 are derived from the issue dielectric parameters computed from the 4-Cole-Cole equations.

**Table 4.1 Typical Composition of Ingredients for Tissue**

Ingredients		Simulating Tissue			
		2450 MHz Body	5250 MHz Body	5600 MHz Body	5785 MHz Body
Mixing Percentage					
Water		73.20	Proprietary Mixture Procured from Speag		
Sugar		0.00			
Salt		0.04			
HEC		0.00			
Bactericide		0.00			
DGBE		26.70			
Dielectric Constant	Target	52.70	48.96	48.47	48.25
Conductivity (S/m)	Target	1.95	5.35	5.77	5.96



## 5. ANSI/IEEE C95.1 – 1992 RF Exposure Limits [2]

### Uncontrolled Environment

Uncontrolled Environments are defined as locations where there is the exposure of individuals who have no knowledge or control of their exposure. The general population/uncontrolled exposure limits are applicable to situations in which the general public may be exposed or in which persons who are exposed as a consequence of their employment may not be made fully aware of the potential for exposure or cannot exercise control over their exposure. Members of the general public would come under this category when exposure is not employment-related; for example, in the case of a wireless transmitter that exposes persons in its vicinity.

### Controlled Environment

Controlled Environments are defined as locations where there is exposure that may be incurred by persons who are aware of the potential for exposure, (i.e. as a result of employment or occupation). In general, occupational/controlled exposure limits are applicable to situations in which persons are exposed as a consequence of their employment, who have been made fully aware of the potential for exposure and can exercise control over their exposure. This exposure category is also applicable when the exposure is of a transient nature due to incidental passage through a location where the exposure levels may be higher than the general population/uncontrolled limits, but the exposed person is fully aware of the potential for exposure and can exercise control over his or her exposure by leaving the area or by some other appropriate means.

**Table 5.1 Human Exposure Limits**

	UNCONTROLLED ENVIRONMENT General Population (W/kg) or (mW/g)	CONTROLLED ENVIRONMENT Professional Population (W/kg) or (mW/g)
SPATIAL PEAK SAR <sup>1</sup> Head	1.60	8.00
SPATIAL AVERAGE SAR <sup>2</sup> Whole Body	0.08	0.40
SPATIAL PEAK SAR <sup>3</sup> Hands, Feet, Ankles, Wrists	4.00	20.00

<sup>1</sup> The Spatial Peak value of the SAR averaged over any 1 gram of tissue (defined as a tissue volume in the shape of a cube) and over the appropriate averaging time.

<sup>2</sup> The Spatial Average value of the SAR averaged over the whole body.

<sup>3</sup> The Spatial Peak value of the SAR averaged over any 10 grams of tissue (defined as a tissue volume in the shape of a cube) and over the appropriate averaging time.

## 6. Measurement Uncertainty

Measurement uncertainty table is not required per KDB 865664 D01 v01 section 2.8.2 page 12. SAR measurement uncertainty analysis is required in the SAR report only when the highest measured SAR in a frequency band is  $\geq 1.5$  W/kg for 1-g SAR. The equivalent ratio (1.5/1.6) should be applied to extremity and occupational exposure conditions. The highest reported value is less than 1.5 W/kg. Therefore, the measurement uncertainty table is not required.

## 7. System Validation

### Tissue Verification

**Table 7.1 Measured Tissue Parameters**

		2450 MHz Body		5200 MHz Body	
Date(s)		June 23, 2015		June 22, 2015	
Liquid Temperature (°C)	20.0	Target	Measured	Target	Measured
Dielectric Constant: $\epsilon$		52.70	52.53	49.01	48.88
Conductivity: $\sigma$		1.95	1.98	5.30	5.28
		5600 MHz Body		5800 MHz Body	
Date(s)		June 22, 2015		June 22, 2015	
Liquid Temperature (°C)	20.0	Target	Measured	Target	Measured
Dielectric Constant: $\epsilon$		48.47	48.28	48.20	47.98
Conductivity: $\sigma$		5.77	5.76	6.00	5.99

See Appendix A for data printout.

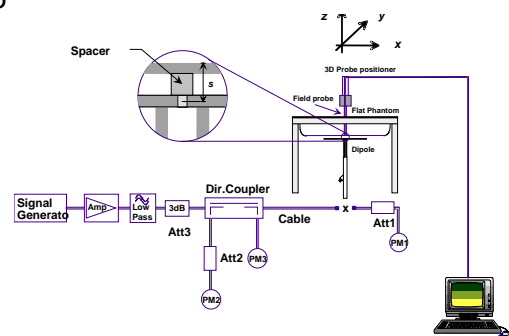
### Test System Verification

Prior to assessment, the system is verified to the  $\pm 10\%$  of the specifications at the test frequency by using the system kit. Power is normalized to 1 watt. (Graphic Plots Attached)

**Table 7.2 System Dipole Validation Target & Measured**

	Test Frequency	Targeted SAR <sub>1g</sub> (W/kg)	Measure SAR <sub>1g</sub> (W/kg)	Tissue Used for Verification	Deviation Target and Fast SAR to SAR (%)	Plot Number
23-Jun-2015	2450 MHz	51.50	50.90	Body	- 1.17	1
22-Jun-2015	5200 MHz	73.40	73.00	Body	- 0.54	2
22-Jun-2015	5600 MHz	79.10	79.60	Body	+ 0.63	3
22-Jun-2015	5800 MHz	72.90	72.50	Body	- 0.55	4

See Appendix A for data plots.5



**Figure 7.1 Dipole Validation Test Setup**

## **8. SAR Test Data Summary**

### **See Measurement Result Data Pages**

See Appendix B for SAR Test Data Plots.  
See Appendix C for SAR Test Setup Photos.

### **Procedures Used To Establish Test Signal**

The device was either placed into simulated transmit mode using the manufacturer's test codes or the actual transmission is activated through a base station simulator or similar equipment. See data pages for actual procedure used in measurement.

### **Device Test Condition**

In order to verify that the device was tested at full power, conducted output power measurements were performed before and after each SAR measurement to confirm the output power unless otherwise noted. If a conducted power deviation of more than 5% occurred, the test was repeated. The power drift of each test is measured at the start of the test and again at the end of the test. The drift percentage is calculated by the formula  $((\text{end}/\text{start}) - 1) * 100$  and rounded to three decimal places. The drift percentage is calculated into the resultant SAR value on the data sheet for each test.

The EUT was tested in the tablet configuration of the device. The laptop configuration was not tested as the antenna is greater than 20 cm from the user. See appendix G for the MPE calculations. The EUT was tested in on all sides of the device where the antenna was within 25 mm of that side. All measurements for the tablet condition were conducted with the side of the device in direct contact with the phantom. For sides of the antenna which were not measured in this report, the SAR was conduct on the module in the modular approval with the maximum distance of 8 mm on all six sides of the antenna. Therefore, the requirements mentioned in RSS-102 Supplementary Procedures (SPR)-001 – SAR Testing Requirements with Regards to Bystanders for Laptop Type Computers with Antennas Built-In on Display Screen (Laptop/Tablet Mode) are covered.

The Bluetooth transmitter does simultaneously transmit with the WiFi transmitter. When the BT is turned on, it transmits on Aux and the WiFi transmits on Main. Simultaneous transmission is evaluated on page 40.

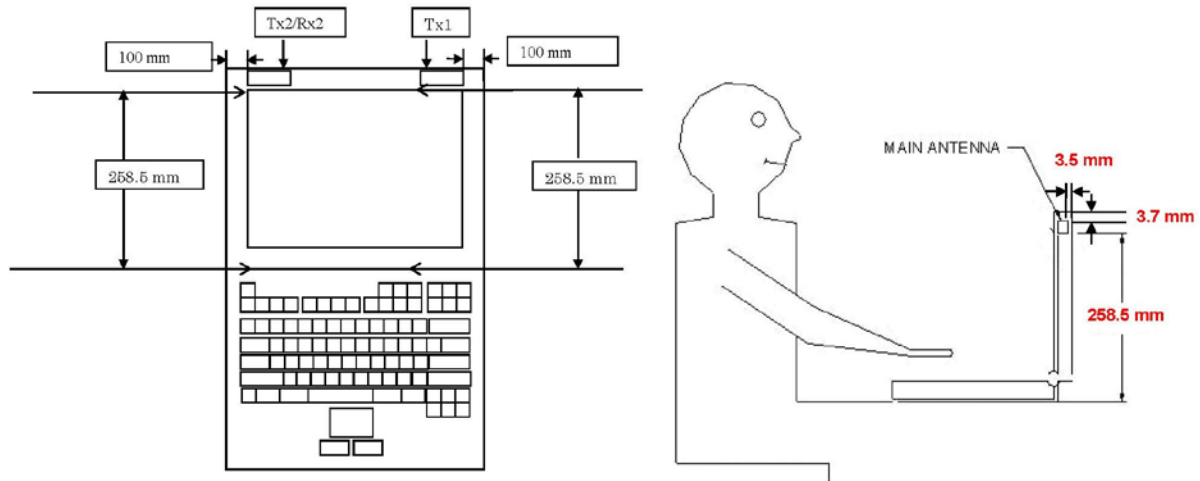
The main antenna was evaluated for stand-alone SAR per RSS-102 Issue 5 for BT. Please see data sheet summary on page 36.

The data rates used when evaluating the WiFi transmitter were the lowest data rates for each mode. The device was operating at its maximum output power at the lowest data rate for all measurements.

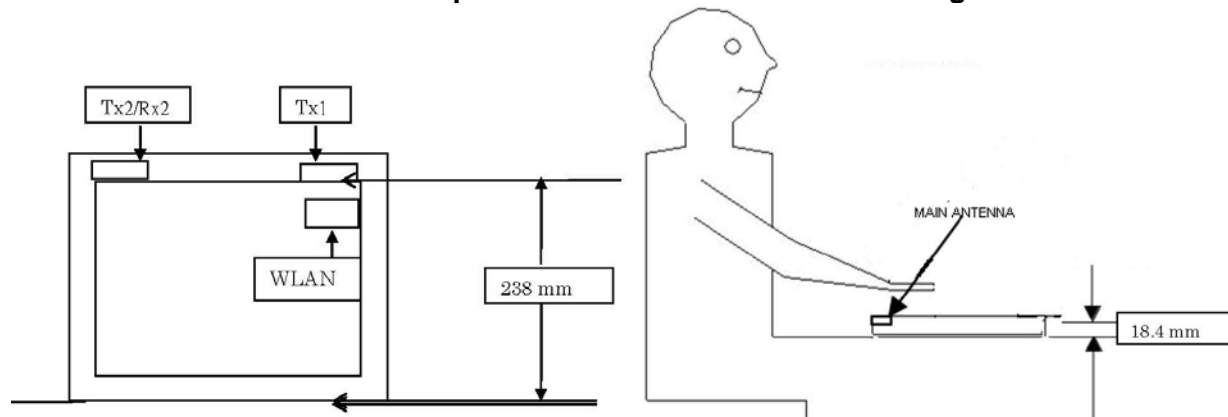
The tablet was using the Intel test utility DRTU Version 1.7.6-1091 and the device driver was version 17.6.0.1.

The antenna was on a minimum of 10 cm of Styrofoam during each test. The following is a pictorial drawing of the locations and separation distances.

### Location and Separation Distances Laptop Mode Diagrams



### Location and Separation Distances Tablet Mode Diagrams



Band	Mode	Bandwidth (MHz)	Channel	Frequency (MHz)	Data Rate	Antenna	Power (dBm)
2450 MHz	802.11b	20	1	2412	1 Mbps	Chain A	16.41
			6	2437			17.50
			11	2462			17.46
			1	2412		Chain B	16.45
			6	2437			17.48
			11	2462			17.47
	802.11g	20	1	2412	6 Mbps	Chain A	13.87
			6	2437			17.50
			11	2462			12.46
			1	2412		Chain B	14.45
			6	2437			17.49
			11	2462			12.42
	802.11n	20	1	2412	HT4	Chain A	13.92
			6	2437			17.47
			11	2462			12.39
			1	2412		Chain B	14.41
			6	2437			17.42
			11	2462			12.46
	802.11n	40	3	2422	HT4	Chain A	13.42
			6	2437			17.45
			9	2452			12.48
			3	2422		Chain B	13.41
			6	2437			17.46
			9	2452			11.47
5.15-5.25 GHz	802.11a	20	36	5180	6 Mbps	Chain A	13.92
			40	5200			15.47
			44	5220			15.50
			48	5240			15.46
			36	5180		Chain B	13.96
			40	5200			15.92
			44	5220			16.00
			48	5240			15.99
	802.11n	20	36	5180	HT4	Chain A	13.89
			40	5200			15.43
			44	5220			15.46
			48	5240			15.42
			36	5180		Chain B	13.98
			40	5200			15.85
			44	5220			15.93
			48	5240			15.90
	802.11n	40	38	5190	HT4	Chain A	11.96
			46	5230	HT4	Chain B	15.42
			38	5190			13.46
			46	5230			15.40
5.25-5.35 GHz	802.11a	20	52	5260	6 Mbps	Chain A	15.38
			56	5280			15.50
			60	5300			15.50
			64	5320			13.46
			52	5260		Chain B	15.94
			56	5280			16.00
			60	5300			16.00
			64	5320			13.41
	802.11n	20	52	5260	HT4	Chain A	15.42
			56	5280			15.44
			60	5300			15.49
			64	5320			13.40
			52	5260		Chain B	15.91
			56	5280			15.88
			60	5300			15.96
			64	5320			13.43
	802.11n	40	54	5270	HT4	Chain A	15.40
			62	5310	HT4	Chain B	13.46
			54	5270			15.44
			62	5310			13.39

Band	Mode	Bandwidth (MHz)	Channel	Frequency (MHz)	Data Rate	Antenna	Power (dBm)
5600 MHz	802.11a	20	100	5500	6 Mbps	Chain A	13.46
			104	5520			15.50
			108	5540			15.46
			112	5560			15.41
			116	5580			15.50
			120	5600			15.44
			124	5620			15.50
			128	5640			15.41
			132	5660			15.43
			136	5680			15.50
			140	5700			12.90
			100	5500		Chain B	13.94
			104	5520			16.00
			108	5540			15.90
			112	5560			15.95
			116	5580			16.00
			120	5600			15.89
			124	5620			16.00
			128	5640			15.92
			132	5660			16.00
			136	5680			15.99
			140	5700			12.94
	802.11n	20	100	5500	HT4	Chain A	13.37
			104	5520			15.42
			108	5540			15.38
			112	5560			15.46
			116	5580			15.48
			120	5600			15.44
			124	5620			15.47
			128	5640			15.40
			132	5660			15.39
			136	5680			15.46
			140	5700			12.87
			100	5500		Chain B	13.42
			104	5520			15.96
			108	5540			15.92
			112	5560			15.90
			116	5580			15.93
			120	5600			15.97
			124	5620			15.89
			128	5640			15.87
			132	5660			15.94
			136	5680			15.82
			140	5700			12.91
	802.11n	40	102	5510	HT4	Chain A	13.42
			110	5550			15.46
			118	5580			15.39
			126	5610			15.42
			134	5670			15.37
			102	5510		Chain B	13.91
			110	5550			15.42
			118	5580			15.40
			126	5610			15.35
			134	5670			15.46



Band	Mode	Bandwidth (MHz)	Channel	Frequency (MHz)	Data Rate	Antenna	Power (dBm)
5800 MHz	802.11a	20	149	5745	6 Mbps	Chain A	15.42
			153	5765			15.48
			157	5785			15.50
			161	5805			15.44
			165	5825			15.50
			149	5745		Chain B	15.96
			153	5765			15.91
			157	5785			16.00
			161	5805			15.95
			165	5825			16.00
	802.11n	20	149	5745	HT4	Chain A	15.44
			153	5765			15.46
			157	5785			15.49
			161	5805			15.42
			165	5825			15.38
			149	5745		Chain B	15.96
			153	5765			15.91
			157	5785			15.90
			161	5805			15.93
			165	5825			15.97
	802.11n	40	151	5755	HT4	Chain A	15.42
			159	5795			15.38
			151	5755		Chain B	15.36
			159	5795			15.40

**Figure 8.1 Test Reduction Table – 2.4 GHz Main**

Mode	Side	Required Channel	Tested/Reduced
802.11b	Tablet – Back	1 – 2412 MHz	Reduced <sup>1</sup>
		6 – 2437 MHz	Tested
		11 – 2462 MHz	Reduced <sup>1</sup>
	Tablet – Top Edge	1 – 2412 MHz	Reduced <sup>1</sup>
		6 – 2437 MHz	Tested
		11 – 2462 MHz	Reduced <sup>1</sup>
	Left, Right, Bottom	1 – 2412 MHz	Reduced <sup>3</sup>
		6 – 2437 MHz	Reduced <sup>3</sup>
		11 – 2462 MHz	Reduced <sup>3</sup>
802.11g	Tablet – Back	1 – 2412 MHz	Reduced <sup>2</sup>
		6 – 2437 MHz	Reduced <sup>2</sup>
		11 – 2462 MHz	Reduced <sup>2</sup>
	Tablet – Top Edge	1 – 2412 MHz	Reduced <sup>2</sup>
		6 – 2437 MHz	Reduced <sup>2</sup>
		11 – 2462 MHz	Reduced <sup>2</sup>
	Left, Right, Bottom	1 – 2412 MHz	Reduced <sup>2</sup>
		6 – 2437 MHz	Reduced <sup>2</sup>
		11 – 2462 MHz	Reduced <sup>2</sup>
802.11n	Tablet – Back	1 – 2412 MHz	Reduced <sup>2</sup>
		6 – 2437 MHz	Reduced <sup>2</sup>
		11 – 2462 MHz	Reduced <sup>2</sup>
	Tablet – Top Edge	1 – 2412 MHz	Reduced <sup>2</sup>
		6 – 2437 MHz	Reduced <sup>2</sup>
		11 – 2462 MHz	Reduced <sup>2</sup>
	Left, Right, Bottom	1 – 2412 MHz	Reduced <sup>2</sup>
		6 – 2437 MHz	Reduced <sup>2</sup>
		11 – 2462 MHz	Reduced <sup>2</sup>

Reduced<sup>1</sup> – When the reported SAR is  $\leq 0.4$  W/kg, SAR is not required for the remaining test configuration per KDB 248227 D01 v02 section 5.1.1 1) page 9.

Reduced<sup>2</sup> – When the highest reported SAR for DSSS is adjusted by the ratio of OFDM to DSSS specified maximum output power and the adjusted SAR is  $\leq 1.2$  W/kg, SAR is not required per KDB 248227 D01 v02 section 5.2.2 2) page 10.

Reduced<sup>3</sup> – When the antenna is more than 25 mm from a side, the test can be reduced per KDB447498 D01 v05r02 section 4.3.1 1) page 11. See below for calculations.

### Calculations for test exclusion for Bottom, Left and Right side.

Maximum power: 56.2 mW  
Bottom Edge distance: 238 mm  
Right Side distance: 100 mm  
Left Side distance: 249 mm

The closest distance is from the right side. Therefore, if the right side is excluded the bottom and left would also be excluded.

$$[[(3.0)/(\sqrt{2.462}) * 50 \text{ mm}]] + [(100 - 50 \text{ mm}) * 10] = 595 \text{ mW which is greater than } 56.2 \text{ mW}$$

**Figure 8.2 Test Reduction Table – 2.4 GHz Aux**

Mode	Side	Required Channel	Tested/Reduced
802.11b	Tablet – Back	1 – 2412 MHz	Reduced <sup>1</sup>
		6 – 2437 MHz	Tested
		11 – 2462 MHz	Reduced <sup>1</sup>
	Tablet – Top Edge	1 – 2412 MHz	Reduced <sup>1</sup>
		6 – 2437 MHz	Tested
		11 – 2462 MHz	Reduced <sup>1</sup>
	Left, Right, Bottom	1 – 2412 MHz	Reduced <sup>3</sup>
		6 – 2437 MHz	Reduced <sup>3</sup>
		11 – 2462 MHz	Reduced <sup>3</sup>
802.11g	Tablet – Back	1 – 2412 MHz	Reduced <sup>2</sup>
		6 – 2437 MHz	Reduced <sup>2</sup>
		11 – 2462 MHz	Reduced <sup>2</sup>
	Tablet – Top Edge	1 – 2412 MHz	Reduced <sup>2</sup>
		6 – 2437 MHz	Reduced <sup>2</sup>
		11 – 2462 MHz	Reduced <sup>2</sup>
	Left, Right, Bottom	1 – 2412 MHz	Reduced <sup>2</sup>
		6 – 2437 MHz	Reduced <sup>2</sup>
		11 – 2462 MHz	Reduced <sup>2</sup>
802.11n	Tablet – Back	1 – 2412 MHz	Reduced <sup>2</sup>
		6 – 2437 MHz	Reduced <sup>2</sup>
		11 – 2462 MHz	Reduced <sup>2</sup>
	Tablet – Top Edge	1 – 2412 MHz	Reduced <sup>2</sup>
		6 – 2437 MHz	Reduced <sup>2</sup>
		11 – 2462 MHz	Reduced <sup>2</sup>
	Left, Right, Bottom	1 – 2412 MHz	Reduced <sup>2</sup>
		6 – 2437 MHz	Reduced <sup>2</sup>
		11 – 2462 MHz	Reduced <sup>2</sup>

Reduced<sup>1</sup> – When the reported SAR is  $\leq 0.4$  W/kg, SAR is not required for the remaining test configuration per KDB 248227 D01 v02 section 5.1.1 1) page 9.

Reduced<sup>2</sup> – When the highest reported SAR for DSSS is adjusted by the ratio of OFDM to DSSS specified maximum output power and the adjusted SAR is  $\leq 1.2$  W/kg, SAR is not required per KDB 248227 D01 v02 section 5.2.2 2) page 10.

Reduced<sup>3</sup> – When the antenna is more than 25 mm from a side, the test can be reduced per KDB447498 D01 v05r02 section 4.3.1 1) page 11. See below for calculations.

### Calculations for test exclusion for Bottom, Left and Right side.

Maximum power: 56.2 mW  
Bottom Edge distance: 238 mm  
Right Side distance: 249 mm  
Left Side distance: 100 mm

The closest distance is from the left side. Therefore, if the left side is excluded the bottom and right would also be excluded.

$$[\{(3.0)/(\sqrt{2.462})\} * 50 \text{ mm}] + \{100 - 50 \text{ mm}\} * 10 = 595 \text{ mW which is greater than 56.2 mW}$$

**Figure 8.3 Test Reduction Table – 5.1 GHz Main**

Mode	Side	Required Channel	Tested/Reduced
802.11a 5150 MHz	Tablet Back	36 – 5180 MHz	Reduced <sup>1</sup>
		40 – 5200 MHz	Reduced <sup>1</sup>
		44 – 5220 MHz	Reduced <sup>1</sup>
		48 – 5240 MHz	Reduced <sup>1</sup>
	Front Edge	36 – 5180 MHz	Reduced <sup>1</sup>
		40 – 5200 MHz	Reduced <sup>1</sup>
		44 – 5220 MHz	Reduced <sup>1</sup>
		48 – 5240 MHz	Reduced <sup>1</sup>
	Left, Right & Bottom	36 – 5180 MHz	Reduced <sup>2</sup>
		40 – 5200 MHz	Reduced <sup>2</sup>
		44 – 5220 MHz	Reduced <sup>2</sup>
		48 – 5240 MHz	Reduced <sup>2</sup>
802.11n 5150 MHz	Tablet Back	36 – 5180 MHz	Reduced <sup>1</sup>
		40 – 5200 MHz	Reduced <sup>1</sup>
		44 – 5220 MHz	Reduced <sup>1</sup>
		48 – 5240 MHz	Reduced <sup>1</sup>
	Front Edge	36 – 5180 MHz	Reduced <sup>1</sup>
		40 – 5200 MHz	Reduced <sup>1</sup>
		44 – 5220 MHz	Reduced <sup>1</sup>
		48 – 5240 MHz	Reduced <sup>1</sup>
	Left, Right & Bottom	36 – 5180 MHz	Reduced <sup>2</sup>
		40 – 5200 MHz	Reduced <sup>2</sup>
		44 – 5220 MHz	Reduced <sup>2</sup>
		48 – 5240 MHz	Reduced <sup>2</sup>

Reduced<sup>1</sup> – When the adjusted SAR is  $\leq 1.2$  W/kg, SAR is not required for the band with lower maximum output power in that test configuration per KDB 248227 D01 v02 section 5.3.1 2) page 11.

Reduced<sup>2</sup> – When the antenna is more than 25 mm from a side, the test can be reduced per KDB447498 D01 v05r02 section 4.3.1 1) page 11. See below for calculations.

#### Calculations for test exclusion for Bottom, Left and Right side.

Maximum power: 44.7 mW  
Bottom Edge distance: 238 mm  
Right Side distance: 100 mm  
Left Side distance: 249 mm

The closest distance is from the right side. Therefore, if the right side is excluded the bottom and left would also be excluded.

$[(3.0/(\sqrt{5.24})) * 50 \text{ mm}] + [(100 - 50 \text{ mm}) * 10] = 565 \text{ mW}$  which is greater than 44.7 mW

**Figure 8.4 Test Reduction Table – 5.1 GHz Aux**

Mode	Side	Required Channel	Tested/Reduced
802.11a 5150 MHz	Tablet Back	36 – 5180 MHz	Reduced <sup>1</sup>
		40 – 5200 MHz	Reduced <sup>1</sup>
		44 – 5220 MHz	Reduced <sup>1</sup>
		48 – 5240 MHz	Reduced <sup>1</sup>
	Front Edge	36 – 5180 MHz	Reduced <sup>1</sup>
		40 – 5200 MHz	Reduced <sup>1</sup>
		44 – 5220 MHz	Reduced <sup>1</sup>
		48 – 5240 MHz	Reduced <sup>1</sup>
	Left, Right & Bottom	36 – 5180 MHz	Reduced <sup>2</sup>
		40 – 5200 MHz	Reduced <sup>2</sup>
		44 – 5220 MHz	Reduced <sup>2</sup>
		48 – 5240 MHz	Reduced <sup>2</sup>
802.11n 5150 MHz	Tablet Back	36 – 5180 MHz	Reduced <sup>1</sup>
		40 – 5200 MHz	Reduced <sup>1</sup>
		44 – 5220 MHz	Reduced <sup>1</sup>
		48 – 5240 MHz	Reduced <sup>1</sup>
	Front Edge	36 – 5180 MHz	Reduced <sup>1</sup>
		40 – 5200 MHz	Reduced <sup>1</sup>
		44 – 5220 MHz	Reduced <sup>1</sup>
		48 – 5240 MHz	Reduced <sup>1</sup>
	Left, Right & Bottom	36 – 5180 MHz	Reduced <sup>2</sup>
		40 – 5200 MHz	Reduced <sup>2</sup>
		44 – 5220 MHz	Reduced <sup>2</sup>
		48 – 5240 MHz	Reduced <sup>2</sup>

Reduced<sup>1</sup> – When the adjusted SAR is  $\leq 1.2$  W/kg, SAR is not required for the band with lower maximum output power in that test configuration per KDB 248227 D01 v02 section 5.3.1 2) page 11.

Reduced<sup>2</sup> – When the antenna is more than 25 mm from a side, the test can be reduced per KDB447498 D01 v05r02 section 4.3.1 1) page 11. See below for calculations.

#### Calculations for test exclusion for Bottom, Left and Right side.

Maximum power: 44.7 mW  
Bottom Edge distance: 238 mm  
Right Side distance: 249 mm  
Left Side distance: 100 mm

The closest distance is from the left side. Therefore, if the left side is excluded the bottom and right would also be excluded.

$[(3.0/(\sqrt{5.24})) * 50 \text{ mm}] + [(100 - 50 \text{ mm}) * 10] = 565 \text{ mW}$  which is greater than 44.7 mW

**Figure 8.5 Test Reduction Table – 5.2 GHz Main**

Mode	Side	Required Channel	Tested/Reduced
802.11a 5250 MHz	Tablet Back	52 – 5260 MHz	Reduced <sup>1</sup>
		56 – 5280 MHz	Reduced <sup>1</sup>
		60 – 5300 MHz	Tested
		64 – 5320 MHz	Reduced <sup>1</sup>
	Front Edge	52 – 5260 MHz	Reduced <sup>3</sup>
		56 – 5280 MHz	Tested
		60 – 5300 MHz	Tested
		64 – 5320 MHz	Reduced <sup>3</sup>
	Left, Right & Bottom	52 – 5260 MHz	Reduced <sup>2</sup>
		56 – 5280 MHz	Reduced <sup>2</sup>
		60 – 5300 MHz	Reduced <sup>2</sup>
		64 – 5320 MHz	Reduced <sup>2</sup>
802.11n 5250 MHz	Tablet Back	52 – 5260 MHz	Reduced <sup>1</sup>
		56 – 5280 MHz	Reduced <sup>1</sup>
		60 – 5300 MHz	Reduced <sup>1</sup>
		64 – 5320 MHz	Reduced <sup>1</sup>
	Front Edge	52 – 5260 MHz	Reduced <sup>1</sup>
		56 – 5280 MHz	Reduced <sup>1</sup>
		60 – 5300 MHz	Reduced <sup>1</sup>
		64 – 5320 MHz	Reduced <sup>1</sup>
	Left, Right & Bottom	52 – 5260 MHz	Reduced <sup>1</sup>
		56 – 5280 MHz	Reduced <sup>1</sup>
		60 – 5300 MHz	Reduced <sup>1</sup>
		64 – 5320 MHz	Reduced <sup>1</sup>

Reduced<sup>1</sup> – When the reported SAR is  $\leq 0.4$  W/kg, SAR is not required for the remaining test configuration per KDB 248227 D01 v02 section 5.1.1 1) page 9.

Reduced<sup>2</sup> – When the antenna is more than 25 mm from a side, the test can be reduced per KDB447498 D01 v05r02 section 4.3.1 1) page 11. See below for calculations.

Reduced<sup>3</sup> – When the reported SAR is  $>0.8$  W/kg, test the next highest configuration until the SAR value is  $\leq 1.2$  W/kg per KDB 248227 D01 v02 section 5.1.1 3) page 9.

Calculations for test exclusion for Bottom, Left and Right side.

Maximum power: 44.7 mW  
Bottom Edge distance: 238 mm  
Right Side distance: 100 mm  
Left Side distance: 249 mm

The closest distance is from the right side. Therefore, if the right side is excluded the bottom and left would also be excluded.

$[(3.0)/(\sqrt{5.32}) * 50 \text{ mm}] + [(100 - 50 \text{ mm}) * 10] = 565 \text{ mW}$  which is greater than 44.7 mW

**Figure 8.6 Test Reduction Table – 5.2 GHz Aux**

Mode	Side	Required Channel	Tested/Reduced
802.11a 5250 MHz	Tablet Back	52 – 5260 MHz	Reduced <sup>1</sup>
		56 – 5280 MHz	Reduced <sup>1</sup>
		60 – 5300 MHz	Tested
		64 – 5320 MHz	Reduced <sup>1</sup>
	Front Edge	52 – 5260 MHz	Reduced <sup>3</sup>
		56 – 5280 MHz	Tested
		60 – 5300 MHz	Tested
		64 – 5320 MHz	Reduced <sup>3</sup>
	Left, Right & Bottom	52 – 5260 MHz	Reduced <sup>2</sup>
		56 – 5280 MHz	Reduced <sup>2</sup>
		60 – 5300 MHz	Reduced <sup>2</sup>
		64 – 5320 MHz	Reduced <sup>2</sup>
802.11n 5250 MHz	Tablet Back	52 – 5260 MHz	Reduced <sup>1</sup>
		56 – 5280 MHz	Reduced <sup>1</sup>
		60 – 5300 MHz	Reduced <sup>1</sup>
		64 – 5320 MHz	Reduced <sup>1</sup>
	Front Edge	52 – 5260 MHz	Reduced <sup>1</sup>
		56 – 5280 MHz	Reduced <sup>1</sup>
		60 – 5300 MHz	Reduced <sup>1</sup>
		64 – 5320 MHz	Reduced <sup>1</sup>
	Left, Right & Bottom	52 – 5260 MHz	Reduced <sup>1</sup>
		56 – 5280 MHz	Reduced <sup>1</sup>
		60 – 5300 MHz	Reduced <sup>1</sup>
		64 – 5320 MHz	Reduced <sup>1</sup>

Reduced<sup>1</sup> – When the reported SAR is  $\leq 0.4$  W/kg, SAR is not required for the remaining test configuration per KDB 248227 D01 v02 section 5.1.1 1) page 9.

Reduced<sup>2</sup> – When the antenna is more than 25 mm from a side, the test can be reduced per KDB447498 D01 v05r02 section 4.3.1 1) page 11. See below for calculations.

Reduced<sup>3</sup> – When the reported SAR is  $>0.8$  W/kg, test the next highest configuration until the SAR value is  $\leq 1.2$  W/kg per KDB 248227 D01 v02 section 5.1.1 3) page 9.

Calculations for test exclusion for Bottom, Left and Right side.

Maximum power: 44.7 mW  
 Bottom Edge distance: 238 mm  
 Right Side distance: 249 mm  
 Left Side distance: 100 mm

The closest distance is from the left side. Therefore, if the left side is excluded the bottom and right would also be excluded.

$[(3.0/(\sqrt{5.32}) * 50 \text{ mm})] + [(100 - 50 \text{ mm}) * 10] = 565 \text{ mW}$  which is greater than 44.7 mW



**Figure 8.7 Test Reduction Table – 5.6 GHz Main**

Mode	Side	Required Channel	Tested/Reduced
802.11a 5600 MHz	Tablet Back	100 – 5500 MHz	Reduced <sup>1</sup>
		104 – 5520 MHz	Reduced <sup>1</sup>
		108 – 5540 MHz	Reduced <sup>1</sup>
		112 – 5560 MHz	Reduced <sup>1</sup>
		116 – 5580 MHz	Reduced <sup>1</sup>
		120 – 5600 MHz	Reduced <sup>1</sup>
		124 – 5620 MHz	Tested
		128 – 5640 MHz	Reduced <sup>1</sup>
		132 – 5660 MHz	Reduced <sup>1</sup>
		136 – 5680 MHz	Reduced <sup>1</sup>
		140 – 5700 MHz	Reduced <sup>1</sup>
	Front Edge	100 – 5500 MHz	Reduced <sup>2</sup>
		104 – 5520 MHz	Reduced <sup>2</sup>
		108 – 5540 MHz	Reduced <sup>2</sup>
		112 – 5560 MHz	Reduced <sup>2</sup>
		116 – 5580 MHz	Tested
		120 – 5600 MHz	Reduced <sup>2</sup>
		124 – 5620 MHz	Tested
		128 – 5640 MHz	Reduced <sup>2</sup>
		132 – 5660 MHz	Reduced <sup>2</sup>
		136 – 5680 MHz	Reduced <sup>2</sup>
		140 – 5700 MHz	Reduced <sup>2</sup>
	Left, Right & Bottom	100 – 5500 MHz	Reduced <sup>3</sup>
		104 – 5520 MHz	Reduced <sup>3</sup>
		108 – 5540 MHz	Reduced <sup>3</sup>
		112 – 5560 MHz	Reduced <sup>3</sup>
		116 – 5580 MHz	Reduced <sup>3</sup>
		120 – 5600 MHz	Reduced <sup>3</sup>
		124 – 5620 MHz	Reduced <sup>3</sup>
		128 – 5640 MHz	Reduced <sup>3</sup>
		132 – 5660 MHz	Reduced <sup>3</sup>
		136 – 5680 MHz	Reduced <sup>3</sup>
		140 – 5700 MHz	Reduced <sup>3</sup>

Reduced<sup>1</sup> – When the reported SAR is  $\leq 0.4$  W/kg, SAR is not required for the remaining test configuration per KDB 248227 D01 v02 section 5.1.1 1) page 9.

Reduced<sup>2</sup> – When the reported SAR is  $>0.8$  W/kg, test the next highest configuration until the SAR value is  $\leq 1.2$  W/kg per KDB 248227 D01 v02 section 5.1.1 3) page 9.

Reduced<sup>3</sup> – When the antenna is more than 25 mm from a side, the test can be reduced per KDB447498 D01 v05r02 section 4.3.1 1) page 11. See below for calculations.

Calculations for test exclusion for Bottom, Left and Right side.

Maximum power: 44.7 mW  
Bottom Edge distance: 238 mm  
Right Side distance: 100 mm  
Left Side distance: 249 mm

The closest distance is from the right side. Therefore, if the right side is excluded the bottom and left would also be excluded.

$[[[(3.0)/(\sqrt{5.70})]*50 \text{ mm}]] + [(100-50 \text{ mm})*10] = 562 \text{ mW}$  which is greater than 44.7 mW

**Figure 8.8 Test Reduction Table – 5.6 GHz Main**

Mode	Side	Required Channel	Tested/Reduced
802.11n 5600 MHz	Tablet Back	100 – 5500 MHz	Reduced <sup>1</sup>
		104 – 5520 MHz	Reduced <sup>1</sup>
		108 – 5540 MHz	Reduced <sup>1</sup>
		112 – 5560 MHz	Reduced <sup>1</sup>
		116 – 5580 MHz	Reduced <sup>1</sup>
		120 – 5600 MHz	Reduced <sup>1</sup>
		124 – 5620 MHz	Reduced <sup>1</sup>
		128 – 5640 MHz	Reduced <sup>1</sup>
		132 – 5660 MHz	Reduced <sup>1</sup>
	Front Edge	136 – 5680 MHz	Reduced <sup>1</sup>
		140 – 5700 MHz	Reduced <sup>1</sup>
		100 – 5500 MHz	Reduced <sup>2</sup>
		104 – 5520 MHz	Reduced <sup>2</sup>
		108 – 5540 MHz	Reduced <sup>2</sup>
		112 – 5560 MHz	Reduced <sup>2</sup>
		116 – 5580 MHz	Reduced <sup>2</sup>
		120 – 5600 MHz	Reduced <sup>2</sup>
		124 – 5620 MHz	Reduced <sup>2</sup>
	Left, Right & Bottom	128 – 5640 MHz	Reduced <sup>2</sup>
		132 – 5660 MHz	Reduced <sup>2</sup>
		136 – 5680 MHz	Reduced <sup>2</sup>
		140 – 5700 MHz	Reduced <sup>2</sup>
		100 – 5500 MHz	Reduced <sup>3</sup>
		104 – 5520 MHz	Reduced <sup>3</sup>
		108 – 5540 MHz	Reduced <sup>3</sup>
		112 – 5560 MHz	Reduced <sup>3</sup>
		116 – 5580 MHz	Reduced <sup>3</sup>
		120 – 5600 MHz	Reduced <sup>3</sup>
		124 – 5620 MHz	Reduced <sup>3</sup>
		128 – 5640 MHz	Reduced <sup>3</sup>
		132 – 5660 MHz	Reduced <sup>3</sup>
		136 – 5680 MHz	Reduced <sup>3</sup>
		140 – 5700 MHz	Reduced <sup>3</sup>

Reduced<sup>1</sup> – When the reported SAR is  $\leq 0.4$  W/kg, SAR is not required for the remaining test configuration per KDB 248227 D01 v02 section 5.1.1 1) page 9.

Reduced<sup>2</sup> – When the reported SAR is  $> 0.4$  W/kg, test next highest output power channel until SAR  $\leq 0.8$  W/kg then all remaining test configurations are not required per KDB 248227 D01 v02 section 5.1.1 2) page 9.

Reduced<sup>3</sup> – When the antenna is more than 25 mm from a side, the test can be reduced per KDB447498 D01 v05r02 section 4.3.1 1) page 11. See below for calculations.

Calculations for test exclusion for Bottom, Left and Right side.

Maximum power: 44.7 mW  
 Bottom Edge distance: 238 mm  
 Right Side distance: 100 mm  
 Left Side distance: 249 mm

The closest distance is from the right side. Therefore, if the right side is excluded the bottom and left would also be excluded.

$[[[(3.0)/(\sqrt{5.70})]*50 \text{ mm}]] + [(100-50 \text{ mm})*10] = 562 \text{ mW}$  which is greater than 44.7 mW

**Figure 8.9 Test Reduction Table – 5.6 GHz Aux**

Mode	Side	Required Channel	Tested/Reduced
802.11a 5600 MHz	Tablet Back	100 – 5500 MHz	Reduced <sup>1</sup>
		104 – 5520 MHz	Reduced <sup>1</sup>
		108 – 5540 MHz	Reduced <sup>1</sup>
		112 – 5560 MHz	Reduced <sup>1</sup>
		116 – 5580 MHz	Reduced <sup>1</sup>
		120 – 5600 MHz	Reduced <sup>1</sup>
		124 – 5620 MHz	Tested
		128 – 5640 MHz	Reduced <sup>1</sup>
		132 – 5660 MHz	Reduced <sup>1</sup>
		136 – 5680 MHz	Reduced <sup>1</sup>
		140 – 5700 MHz	Reduced <sup>1</sup>
	Front Edge	100 – 5500 MHz	Reduced <sup>2</sup>
		104 – 5520 MHz	Reduced <sup>2</sup>
		108 – 5540 MHz	Reduced <sup>2</sup>
		112 – 5560 MHz	Reduced <sup>2</sup>
		116 – 5580 MHz	Tested
		120 – 5600 MHz	Reduced <sup>2</sup>
		124 – 5620 MHz	Tested
		128 – 5640 MHz	Reduced <sup>2</sup>
		132 – 5660 MHz	Reduced <sup>2</sup>
		136 – 5680 MHz	Reduced <sup>2</sup>
		140 – 5700 MHz	Reduced <sup>2</sup>
	Left, Right & Bottom	100 – 5500 MHz	Reduced <sup>3</sup>
		104 – 5520 MHz	Reduced <sup>3</sup>
		108 – 5540 MHz	Reduced <sup>3</sup>
		112 – 5560 MHz	Reduced <sup>3</sup>
		116 – 5580 MHz	Reduced <sup>3</sup>
		120 – 5600 MHz	Reduced <sup>3</sup>
		124 – 5620 MHz	Reduced <sup>3</sup>
		128 – 5640 MHz	Reduced <sup>3</sup>
		132 – 5660 MHz	Reduced <sup>3</sup>
		136 – 5680 MHz	Reduced <sup>3</sup>
		140 – 5700 MHz	Reduced <sup>3</sup>

Reduced<sup>1</sup> – When the reported SAR is  $\leq 0.4$  W/kg, SAR is not required for the remaining test configuration per KDB 248227 D01 v02 section 5.1.1 1) page 9.

Reduced<sup>2</sup> – When the reported SAR is  $> 0.4$  W/kg, test next highest output power channel until SAR  $\leq 0.8$  W/kg then all remaining test configurations are not required per KDB 248227 D01 v02 section 5.1.1 2) page 9.

Reduced<sup>3</sup> – When the antenna is more than 25 mm from a side, the test can be reduced per KDB447498 D01 v05r02 section 4.3.1 1) page 11. See below for calculations.

Calculations for test exclusion for Bottom, Left and Right side.

Maximum power: 44.7 mW  
Bottom Edge distance: 238 mm  
Right Side distance: 249 mm  
Left Side distance: 100 mm

The closest distance is from the left side. Therefore, if the left side is excluded the bottom and right would also be excluded.

$[(3.0/(\sqrt{5.70})) * 50 \text{ mm}] + [(100 - 50 \text{ mm}) * 10] = 462 \text{ mW}$  which is greater than 44.7 mW

**Figure 8.10 Test Reduction Table – 5.6 GHz Aux**

Mode	Side	Required Channel	Tested/Reduced
802.11a 5600 MHz	Tablet Back	100 – 5500 MHz	Reduced <sup>1</sup>
		104 – 5520 MHz	Reduced <sup>1</sup>
		108 – 5540 MHz	Reduced <sup>1</sup>
		112 – 5560 MHz	Reduced <sup>1</sup>
		116 – 5580 MHz	Reduced <sup>1</sup>
		120 – 5600 MHz	Reduced <sup>1</sup>
		124 – 5620 MHz	Reduced <sup>1</sup>
		128 – 5640 MHz	Reduced <sup>1</sup>
		132 – 5660 MHz	Reduced <sup>1</sup>
		136 – 5680 MHz	Reduced <sup>1</sup>
		140 – 5700 MHz	Reduced <sup>1</sup>
	Front Edge	100 – 5500 MHz	Reduced <sup>2</sup>
		104 – 5520 MHz	Reduced <sup>2</sup>
		108 – 5540 MHz	Reduced <sup>2</sup>
		112 – 5560 MHz	Reduced <sup>2</sup>
		116 – 5580 MHz	Reduced <sup>2</sup>
		120 – 5600 MHz	Reduced <sup>2</sup>
		124 – 5620 MHz	Reduced <sup>2</sup>
		128 – 5640 MHz	Reduced <sup>2</sup>
		132 – 5660 MHz	Reduced <sup>2</sup>
		136 – 5680 MHz	Reduced <sup>2</sup>
		140 – 5700 MHz	Reduced <sup>2</sup>
	Left, Right & Bottom	100 – 5500 MHz	Reduced <sup>3</sup>
		104 – 5520 MHz	Reduced <sup>3</sup>
		108 – 5540 MHz	Reduced <sup>3</sup>
		112 – 5560 MHz	Reduced <sup>3</sup>
		116 – 5580 MHz	Reduced <sup>3</sup>
		120 – 5600 MHz	Reduced <sup>3</sup>
		124 – 5620 MHz	Reduced <sup>3</sup>
		128 – 5640 MHz	Reduced <sup>3</sup>
		132 – 5660 MHz	Reduced <sup>3</sup>
		136 – 5680 MHz	Reduced <sup>3</sup>
		140 – 5700 MHz	Reduced <sup>3</sup>

Reduced<sup>1</sup> – When the reported SAR is  $\leq 0.4$  W/kg, SAR is not required for the remaining test configuration per KDB 248227 D01 v02 section 5.1.1 1) page 9.

Reduced<sup>2</sup> – When the reported SAR is  $> 0.4$  W/kg, test next highest output power channel until SAR  $\leq 0.8$  W/kg then all remaining test configurations are not required per KDB 248227 D01 v02 section 5.1.1 2) page 9.

Reduced<sup>3</sup> – When the antenna is more than 25 mm from a side, the test can be reduced per KDB447498 D01 v05r02 section 4.3.1 1) page 11. See below for calculations.

Calculations for test exclusion for Bottom, Left and Right side.

Maximum power: 44.7 mW  
Bottom Edge distance: 238 mm  
Right Side distance: 249 mm  
Left Side distance: 100 mm

The closest distance is from the left side. Therefore, if the left side is excluded the bottom and right would also be excluded.

$[[[(3.0)/(\sqrt{5.70})]*50 \text{ mm}]] + [(100-50 \text{ mm})*10] = 462 \text{ mW}$  which is greater than 44.7 mW

**Figure 8.11 Test Reduction Table – 5.8 GHz Main**

Mode	Side	Required Channel	Tested/Reduced
802.11a 5800 MHz	Tablet Back	149 – 5745 MHz	Reduced <sup>1</sup>
		153 – 5765 MHz	Reduced <sup>1</sup>
		157 – 5785 MHz	Tested
		161 – 5805 MHz	Reduced <sup>1</sup>
		165 – 5825 MHz	Reduced <sup>1</sup>
	Front Edge	149 – 5745 MHz	Reduced <sup>2</sup>
		153 – 5765 MHz	Reduced <sup>2</sup>
		157 – 5785 MHz	Tested
		161 – 5805 MHz	Reduced <sup>2</sup>
		165 – 5825 MHz	Tested
	Left, Right & Bottom	149 – 5745 MHz	Reduced <sup>3</sup>
		153 – 5765 MHz	Reduced <sup>3</sup>
		157 – 5785 MHz	Reduced <sup>3</sup>
		161 – 5805 MHz	Reduced <sup>3</sup>
		165 – 5825 MHz	Reduced <sup>3</sup>
802.11n 5800 MHz	Tablet Back	149 – 5745 MHz	Reduced <sup>1</sup>
		153 – 5765 MHz	Reduced <sup>1</sup>
		157 – 5785 MHz	Reduced <sup>1</sup>
		161 – 5805 MHz	Reduced <sup>1</sup>
		165 – 5825 MHz	Reduced <sup>1</sup>
	Front Edge	149 – 5745 MHz	Reduced <sup>2</sup>
		153 – 5765 MHz	Reduced <sup>2</sup>
		157 – 5785 MHz	Reduced <sup>2</sup>
		161 – 5805 MHz	Reduced <sup>2</sup>
		165 – 5825 MHz	Reduced <sup>2</sup>
	Left, Right & Bottom	149 – 5745 MHz	Reduced <sup>3</sup>
		153 – 5765 MHz	Reduced <sup>3</sup>
		157 – 5785 MHz	Reduced <sup>3</sup>
		161 – 5805 MHz	Reduced <sup>3</sup>
		165 – 5825 MHz	Reduced <sup>3</sup>

Reduced<sup>1</sup> – When the reported SAR is  $\leq 0.4$  W/kg, SAR is not required for the remaining test configuration per KDB 248227 D01 v02 section 5.1.1 1) page 9.

Reduced<sup>2</sup> – When the reported SAR is  $> 0.4$  W/kg, test next highest output power channel until SAR  $\leq 0.8$  W/kg then all remaining test configurations are not required per KDB 248227 D01 v02 section 5.1.1 2) page 9.

Reduced<sup>3</sup> – When the antenna is more than 25 mm from a side, the test can be reduced per KDB447498 D01 v05r02 section 4.3.1 1) page 11. See below for calculations.

Calculations for test exclusion for Bottom, Left and Right side.

Maximum power: 44.7 mW  
Bottom Edge distance: 238 mm  
Right Side distance: 100 mm  
Left Side distance: 249 mm

The closest distance is from the right side. Therefore, if the right side is excluded the bottom and left would also be excluded.

$[(3.0)/(\sqrt{5.825})] \times 50 \text{ mm}] + [(100-50 \text{ mm}) \times 10] = 462 \text{ mW}$  which is greater than 44.7 mW

**Figure 8.12 Test Reduction Table – 5.8 GHz Aux**

Mode	Side	Required Channel	Tested/Reduced
802.11a 5800 MHz	Tablet Back	149 – 5745 MHz	Reduced <sup>1</sup>
		153 – 5765 MHz	Reduced <sup>1</sup>
		157 – 5785 MHz	Tested
		161 – 5805 MHz	Reduced <sup>1</sup>
		165 – 5825 MHz	Reduced <sup>1</sup>
	Front Edge	149 – 5745 MHz	Reduced <sup>2</sup>
		153 – 5765 MHz	Reduced <sup>2</sup>
		157 – 5785 MHz	Tested
		161 – 5805 MHz	Reduced <sup>2</sup>
		165 – 5825 MHz	Tested
	Left, Right & Bottom	149 – 5745 MHz	Reduced <sup>3</sup>
		153 – 5765 MHz	Reduced <sup>3</sup>
		157 – 5785 MHz	Reduced <sup>3</sup>
		161 – 5805 MHz	Reduced <sup>3</sup>
		165 – 5825 MHz	Reduced <sup>3</sup>
802.11n 5800 MHz	Tablet Back	149 – 5745 MHz	Reduced <sup>1</sup>
		153 – 5765 MHz	Reduced <sup>1</sup>
		157 – 5785 MHz	Reduced <sup>1</sup>
		161 – 5805 MHz	Reduced <sup>1</sup>
		165 – 5825 MHz	Reduced <sup>1</sup>
	Front Edge	149 – 5745 MHz	Reduced <sup>2</sup>
		153 – 5765 MHz	Reduced <sup>2</sup>
		157 – 5785 MHz	Reduced <sup>2</sup>
		161 – 5805 MHz	Reduced <sup>2</sup>
		165 – 5825 MHz	Reduced <sup>2</sup>
	Left, Right & Bottom	149 – 5745 MHz	Reduced <sup>3</sup>
		153 – 5765 MHz	Reduced <sup>3</sup>
		157 – 5785 MHz	Reduced <sup>3</sup>
		161 – 5805 MHz	Reduced <sup>3</sup>
		165 – 5825 MHz	Reduced <sup>3</sup>

Reduced<sup>1</sup> – When the reported SAR is  $\leq 0.4$  W/kg, SAR is not required for the remaining test configuration per KDB 248227 D01 v02 section 5.1.1 1) page 9.

Reduced<sup>2</sup> – When the reported SAR is  $> 0.4$  W/kg, test next highest output power channel until SAR  $\leq 0.8$  W/kg then all remaining test configurations are not required per KDB 248227 D01 v02 section 5.1.1 2) page 9.

Reduced<sup>3</sup> – When the antenna is more than 25 mm from a side, the test can be reduced per KDB447498 D01 v05r02 section 4.3.1 1) page 11. See below for calculations.

Calculations for test exclusion for Bottom, Left and Right side.

Maximum power: 44.7 mW  
Bottom Edge distance: 238 mm  
Right Side distance: 249 mm  
Left Side distance: 100 mm

The closest distance is from the left side. Therefore, if the left side is excluded the bottom and right would also be excluded.

$[(3.0)/(\sqrt{5.825})] \times 50 \text{ mm}] + [(100-50 \text{ mm}) \times 10] = 462 \text{ mW}$  which is greater than 44.7 mW

## SAR Data Summary – 2450 MHz Body 802.11b & BT

### MEASUREMENT RESULTS

Plot	Gap	Antenna	Position	Frequency		Modulation	Antenna	End Power	Measured SAR (W/kg)	Reported SAR (W/kg)
				MHz	Ch.			(dBm)		
-----	0 mm	WNC	Tablet Back	2437	6	DSSS	Main	17.50	0.00613	0.01
1			Front Edge	2437	6	DSSS		17.50	0.254	0.25
-----			Tablet Back	2437	6	DSSS	Aux	17.50	0.00352	<0.01
-----			Front Edge	2437	6	DSSS		17.50	0.180	0.18
-----			Tablet Back	2440	39	GFSK	Main	7.78	0.000268	<<0.01
-----			Front Edge	2440	39	GFSK		7.78	0.00105	<<0.01

**Body**  
**1.6 W/kg (mW/g)**  
averaged over 1 gram

- Battery is fully charged for all tests.  
Power Measured ☒ Conducted ☐ ERP ☐ EIRP
- SAR Measurement  
Phantom Configuration ☐ Left Head ☒ Eli4 ☐ Right Head  
SAR Configuration ☐ Head ☒ Body
- Test Signal Call Mode ☒ Test Code ☐ Base Station Simulator
- Test Configuration ☐ With Belt Clip ☐ Without Belt Clip ☒ N/A
- Tissue Depth is at least 15.0 cm



Jay M. Moulton  
Vice President



## SAR Data Summary – 5250 MHz Body 802.11a

### MEASUREMENT RESULTS

Plot	Gap	Antenna	Position	Frequency		Modulation	Antenna	End Power	Measured SAR (W/kg)	Reported SAR (W/kg)
				MHz	Ch.			(dBm)		
-----	0 mm	WNC	Tablet Back	5300	60	OFDM	Main	15.50	0.0189	0.02
2			Front Edge	5280	56	OFDM		15.50	1.05	1.05
-----				5300	60	OFDM		15.50	0.855	0.86
-----			Tablet Back	5300	60	OFDM	Aux	16.00	0.0111	0.01
-----			Front Edge	5280	56	OFDM		16.00	0.751	0.75
-----				5300	60	OFDM		16.00	0.811	0.81

**Body**  
**1.6 W/kg (mW/g)**  
averaged over 1 gram

- Battery is fully charged for all tests.  
Power Measured ☒ Conducted ☐ ERP ☐ EIRP
- SAR Measurement  
Phantom Configuration ☐ Left Head ☒ Eli4 ☐ Right Head  
SAR Configuration ☐ Head ☒ Body
- Test Signal Call Mode ☒ Test Code ☐ Base Station Simulator
- Test Configuration ☐ With Belt Clip ☐ Without Belt Clip ☒ N/A
- Tissue Depth is at least 15.0 cm



Jay M. Moulton  
Vice President

## SAR Data Summary – 5600 MHz Body 802.11a

### MEASUREMENT RESULTS

Plot	Gap	Antenna	Position	Frequency		Modulation	Antenna	End Power	Measured SAR (W/kg)	Reported SAR (W/kg)
				MHz	Ch.			(dBm)		
-----	0 mm	WNC	Tablet Back	5620	124	OFDM	Main	15.50	0.00404	<0.01
3			Front Edge	5580	116	OFDM		15.50	0.963	0.96
-----				5620	124	OFDM		15.50	0.896	0.90
-----			Tablet Back	5620	124	OFDM	Aux	16.00	0.00893	<0.01
-----			Front Edge	5580	116	OFDM		16.00	0.823	0.82
-----				5620	124	OFDM		16.00	0.746	0.75

**Body**  
**1.6 W/kg (mW/g)**  
averaged over 1 gram

- Battery is fully charged for all tests.  
Power Measured ☒ Conducted ☐ ERP ☐ EIRP
- SAR Measurement  
Phantom Configuration ☐ Left Head ☒ Eli4 ☐ Right Head  
SAR Configuration ☐ Head ☒ Body
- Test Signal Call Mode ☒ Test Code ☐ Base Station Simulator
- Test Configuration ☐ With Belt Clip ☐ Without Belt Clip ☒ N/A
- Tissue Depth is at least 15.0 cm



Jay M. Moulton  
Vice President

# SAR Data Summary – 5800 MHz Body 802.11a

## MEASUREMENT RESULTS

Plot	Gap	Antenna	Position	Frequency		Modulation	Antenna	End Power	Measured SAR (W/kg)	Reported SAR (W/kg)
				MHz	Ch.			(dBm)		
-----	0 mm	WNC	Tablet Back	5785	157	OFDM	Main	15.50	0.0061	<0.01
4			Front Edge	5785	157	OFDM		15.50	1.06	1.06
-----				5825	165	OFDM		15.50	0.876	0.88
-----			Tablet Back	5785	157	OFDM	Aux	16.00	0.00692	<0.01
-----			Front Edge	5785	157	OFDM		16.00	0.452	0.45
-----				5825	165	OFDM		16.00	0.459	0.46

**Body**  
**1.6 W/kg (mW/g)**  
averaged over 1 gram

- Battery is fully charged for all tests.  
Power Measured ☒ Conducted ☐ ERP ☐ EIRP
- SAR Measurement  
Phantom Configuration ☐ Left Head ☒ Eli4 ☐ Right Head  
SAR Configuration ☐ Head ☒ Body
- Test Signal Call Mode ☒ Test Code ☐ Base Station Simulator
- Test Configuration ☐ With Belt Clip ☐ Without Belt Clip ☒ N/A
- Tissue Depth is at least 15.0 cm



Jay M. Moulton  
Vice President

## SAR Data Summary – Simultaneous Evaluation

MEASUREMENT RESULTS								
Frequency		Modulation	Frequency		Modulation	SAR <sub>1</sub>	SAR <sub>2</sub>	SAR Total
MHz	Ch.		MHz	Ch.				
2437	6	DSSS	2440	39	GFSK	0.25	0.01	0.26
5280	56	OFDM	2440	39	GFSK	1.05	0.01	1.06
5580	116	OFDM	2440	39	GFSK	0.96	0.01	0.97
5785	157	OFDM	2440	39	GFSK	1.06	0.01	1.07
						<b>Body</b> <b>1.6 W/kg (mW/g)</b> averaged over 1 gram		

The sum of the two transmitters is less than the limit; therefore, the simultaneous transmission meets the requirements of KDB447498 D01 v05r02 section 4.3.2 page 11.

MEASUREMENT RESULTS - MIMO								
Frequency		Modulation	Frequency		Modulation	SAR <sub>1</sub> - Main	SAR <sub>2</sub> - Aux	SAR Total
MHz	Ch.		MHz	Ch.				
2437	6	DSSS	2437	6	DSSS	0.25	0.18	0.43
5300	60	OFDM	5300	60	OFDM	1.05	0.81	1.86
5580	116	OFDM	5620	124	OFDM	0.96	0.82	1.78
5785	157	OFDM	5785	157	OFDM	1.06	0.46	1.52
						<b>Body</b> <b>1.6 W/kg (mW/g)</b> averaged over 1 gram		

In MIMO mode, the worst case condition is in the 5.2 GHz band. The main and aux antennas are a minimum of 114 mm apart. Using the highest reported SAR to calculate the simultaneous Tx using peak separation ratio, the highest ratio would be 0.02 which meets the requirements of KDB 447498 section 4.3.2 3) on page 13. The calculation is shown below.

Simultaneous Separation Ratio Calculation

$$(SAR_1 + SAR_2)^{1.5}/R_i \leq 0.04 \text{ rounded to two digits}$$

$$(1.05 + 0.81)^{1.5}/114 = 0.02$$

## 9. Test Equipment List

**Table 9.1 Equipment Specifications**

Type	Calibration Due Date	Calibration Done Date	Serial Number
Staubli Robot TX60L	N/A	N/A	F07/55M6A1/A/01
Measurement Controller CS8c	N/A	N/A	1012
ELI4 Flat Phantom	N/A	N/A	1065
Device Holder	N/A	N/A	N/A
Data Acquisition Electronics 4	08/12/2015	08/12/2014	759
SPEAG E-Field Probe EX3DV4	01/23/2016	01/23/2015	3833
Speag Validation Dipole D2450V2	12/04/2015	12/04/2012	829
Speag Validation Dipole D5GHzV2	12/11/2015	12/11/2012	1085
Agilent N1911A Power Meter	03/24/2016	03/24/2015	GB45100254
Agilent N1922A Power Sensor	06/15/2016	06/15/2015	MY45240464
Advantest R3261A Spectrum Analyzer	03/26/2017	03/26/2015	31720068
Agilent (HP) 8350B Signal Generator	03/26/2017	03/26/2015	2749A10226
Agilent (HP) 83525A RF Plug-In	03/26/2017	03/26/2015	2647A01172
Agilent (HP) 8753C Vector Network Analyzer	03/26/2017	03/26/2015	3135A01724
Agilent (HP) 85047A S-Parameter Test Set	03/26/2017	03/26/2015	2904A00595
Agilent (HP) 8960 Base Station Sim.	03/31/2017	03/31/2015	MY48360364
Anritsu MT8820C	07/29/2015	07/29/2014	6201176199
Agilent 778D Dual Directional Coupler	N/A	N/A	MY48220184
MiniCircuits BW-N20W5+ Fixed 20 dB Attenuator	N/A	N/A	N/A
MiniCircuits SPL-10.7+ Low Pass Filter	N/A	N/A	R8979513746
Apriel Dielectric Probe Assembly	N/A	N/A	0011
Body Equivalent Matter (2450 MHz)	N/A	N/A	N/A
Body Equivalent Matter (5 Ghz)	N/A	N/A	N/A

## 10. Conclusion

The SAR measurement indicates that the EUT complies with the RF radiation exposure limits of the FCC/IC. These measurements are taken to simulate the RF effects exposure under worst-case conditions. Precise laboratory measures were taken to assure repeatability of the tests. The tested device complies with the requirements in respect to all parameters subject to the test. The test results and statements relate only to the item(s) tested.

Please note that the absorption and distribution of electromagnetic energy in the body is a very complex phenomena that depends on the mass, shape, and size of the body; the orientation of the body with respect to the field vectors; and, the electrical properties of both the body and the environment. Other variables that may play a substantial role in possible biological effects are those that characterize the environment (e.g. ambient temperature, air velocity, relative humidity, and body insulation) and those that characterize the individual (e.g. age, gender, activity level, debilitation, or disease). Because innumerable factors may interact to determine the specific biological outcome of an exposure to electromagnetic fields, any protection guide shall consider maximal amplification of biological effects as a result of field-body interactions, environmental conditions, and physiological variables.

## 11. References

- [1] Federal Communications Commission, ET Docket 93-62, Guidelines for Evaluating the Environmental Effects of Radio Frequency Radiation, August 1996
- [2] ANSI/IEEE C95.1 – 1992, American National Standard Safety Levels with respect to Human Exposure to Radio Frequency Electromagnetic Fields, 300kHz to 100GHz, New York: IEEE, 1992.
- [3] ANSI/IEEE C95.3 – 1992, IEEE Recommended Practice for the Measurement of Potentially Hazardous Electromagnetic Fields – RF and Microwave, New York: IEEE, 1992.
- [4] International Electrotechnical Commission, IEC 62209-2 (Edition 1.0), Human Exposure to radio frequency fields from hand-held and body mounted wireless communication devices – Human models, instrumentation, and procedures – Part 2: Procedure to determine the specific absorption rate (SAR) for wireless communication devices used in close proximity to the human body (frequency range of 30 MHz to 6 GHz), March 2010.
- [5] IEEE Standard 1528 – 2013, IEEE Recommended Practice for Determining the Peak-Spatial Average Specific Absorption Rate (SAR) in the Human Head from Wireless Communication Devices: Measurement Techniques, June 2013.
- [6] Industry Canada, RSS – 102 Issue 5, Radio Frequency Exposure Compliance of Radiocommunication Apparatus (All Frequency Bands), March 2015.
- [7] Health Canada, Safety Code 6, Limits of Human Exposure to Radiofrequency Electromagnetic Fields in the Frequency Range from 3kHz to 300 GHz, 2009.

## Appendix A – System Validation Plots and Data

```

*****
Test Result for UIM Dielectric Parameter
Tue 23/Jun/2015
Freq   Frequency(GHz)
FCC_eH Limits for Head Epsilon
FCC_sH Limits for Head Sigma
FCC_eB Limits for Body Epsilon
FCC_sB Limits for Body Sigma
Test_e Epsilon of UIM
Test_s Sigma of UIM
*****
Freq      FCC_eB FCC_sB Test_e Test_s
2.4100      52.75  1.91  52.60  1.94
2.4120      52.742 1.918 52.596 1.942*
2.4200      52.74  1.92  52.58  1.95
2.4300      52.73  1.93  52.57  1.96
2.4370      52.716 1.937 52.556 1.967*
2.4400      52.71  1.94  52.55  1.97
2.4500      52.70  1.95  52.53  1.98
2.4600      52.69  1.96  52.52  2.00
2.4620      52.687 1.963 52.516 2.002*
2.4700      52.67  1.98  52.50  2.01
2.4800      52.66  1.99  52.49  2.02

```

\* value interpolated



\*\*\*\*\*

Test Result for UIM Dielectric Parameter

Mon 22/Jun/2015

Freq Frequency(GHz)

FCC\_eH Limits for Head Epsilon

FCC\_sH Limits for Head Sigma

FCC\_eB Limits for Body Epsilon

FCC\_sB Limits for Body Sigma

Test\_e Epsilon of UIM

Test\_s Sigma of UIM

\*\*\*\*\*

Freq	FCC_eB	FCC_sB	Test_e	Test_s
5.1000	49.15	5.18	49.03	5.17
5.1200	49.12	5.21	49.00	5.19
5.1400	49.10	5.23	48.97	5.21
5.1600	49.07	5.25	48.94	5.24
5.1800	49.04	5.28	48.91	5.26
5.2000	49.01	5.30	48.88	5.28
5.2100	49.00	5.31	48.865	2.295*
5.2200	48.99	5.32	48.85	5.31
5.2400	48.96	5.35	48.82	5.33
5.2600	48.93	5.37	48.79	5.35
5.2800	48.91	5.39	48.76	5.38
5.2900	48.895	5.405	48.745	5.39*
5.3000	48.88	5.42	48.73	5.40
5.3200	48.85	5.44	48.70	5.42
5.3400	48.82	5.46	48.67	5.45
5.3600	48.80	5.49	48.64	5.47
5.3800	48.77	5.51	48.61	5.49
5.4000	48.74	5.53	48.58	5.52
5.4200	48.72	5.56	48.54	5.54
5.4400	48.69	5.58	48.50	5.56
5.4600	48.66	5.60	48.49	5.59
5.4800	48.63	5.63	48.46	5.62
5.5000	48.61	5.65	48.43	5.64
5.5200	48.58	5.67	48.40	5.66
5.5400	48.55	5.70	48.37	5.69
5.5600	48.53	5.72	48.34	5.71
5.5800	48.50	5.74	48.31	5.73
5.6000	48.47	5.77	48.28	5.76
5.6100	48.455	5.78	48.265	5.77*
5.6200	48.44	5.79	48.25	5.78
5.6400	48.42	5.81	48.22	5.80
5.6600	48.39	5.84	48.19	5.83
5.6800	48.36	5.86	48.16	5.85
5.7000	48.34	5.88	48.13	5.87
5.7200	48.31	5.91	48.11	5.90
5.7400	48.28	5.93	48.08	5.92
5.7450	48.273	5.935	48.07	5.925*
5.7600	48.25	5.95	48.04	5.94
5.7750	48.235	5.973	48.018	5.963*
5.7800	48.23	5.98	48.01	5.97
5.7850	48.223	5.985	48.003	5.975*
5.8000	48.20	6.00	47.98	5.99
5.8200	48.17	6.02	47.95	6.01
5.8250	48.165	6.028	47.943	6.018*
5.8400	48.15	6.05	47.92	6.04

\* value interpolated

# RF Exposure Lab

## Plot 1

**DUT: Dipole 2450 MHz D2450V2; Type: D2450V2; Serial: D2450V2 - SN: 829**

Communication System: CW; Frequency: 2450 MHz; Duty Cycle: 1:1

Medium: MSL2450; Medium parameters used:  $f = 2450$  MHz;  $\sigma = 1.98$  S/m;  $\epsilon_r = 52.53$ ;  $\rho = 1000$  kg/m<sup>3</sup>

Phantom section: Flat Section

Test Date: Date: 6/23/2015; Ambient Temp: 23 °C; Tissue Temp: 21 °C

Probe: EX3DV4 - SN3833; ConvF(6.58, 6.58, 6.58); Calibrated: 1/23/2015;

Sensor-Surface: 2mm (Mechanical Surface Detection)

Electronics: DAE4 Sn759; Calibrated: 8/12/2014

Phantom: ELI v4.0; Type: QDOVA001BB; Serial: 1251

Measurement SW: DASY52, Version 52.8 (8); SEMCAD X Version 14.6.10 (7331)

### Procedure Notes:

**Body Verification/2450 MHz/Area Scan (61x101x1):** Interpolated grid: dx=1.200 mm, dy=1.200 mm

Maximum value of SAR (interpolated) = 8.95 W/kg

**Body Verification/2450 MHz/Zoom Scan (7x7x7)/Cube 0:** Measurement grid: dx=5mm, dy=5mm, dz=5mm

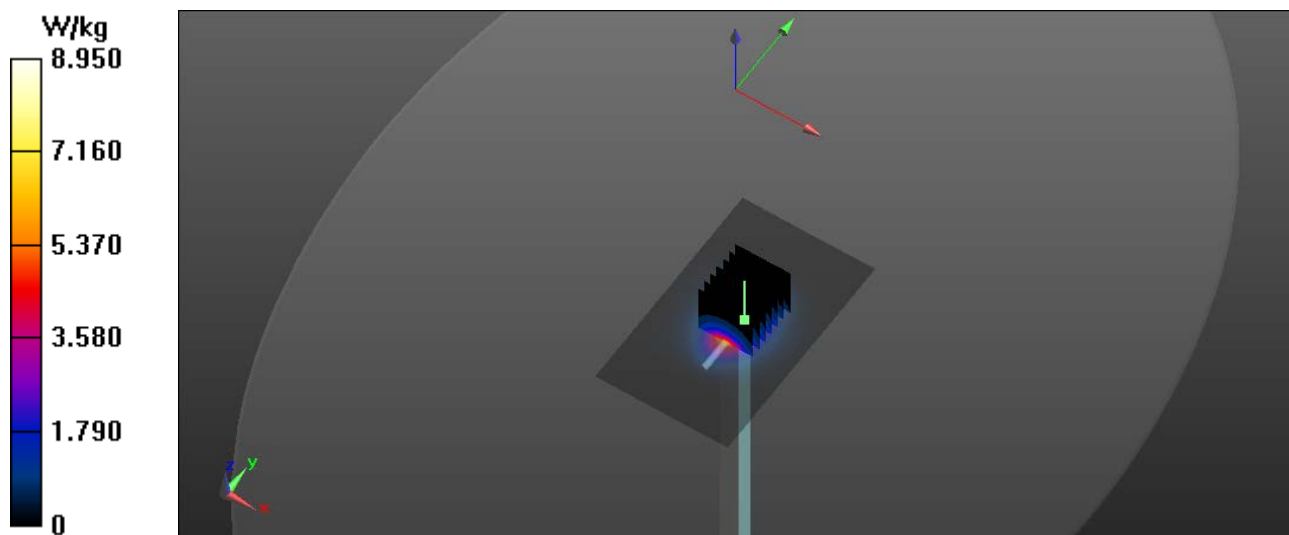
Reference Value = 53.963 V/m; Power Drift = -0.01 dB

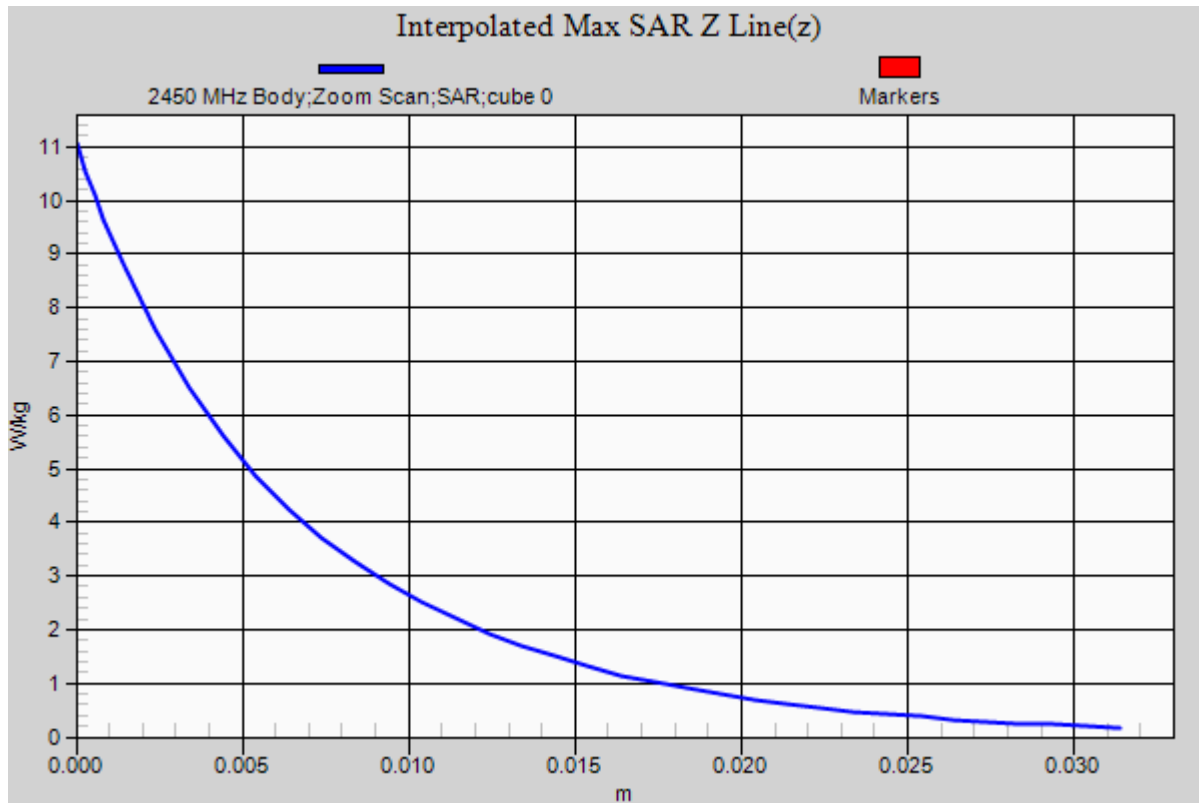
Peak SAR (extrapolated) = 11.02 W/kg

$P_{in} = 100$  mW

**SAR(1 g) = 5.09 W/kg; SAR(10 g) = 2.38 W/kg**

Maximum value of SAR (measured) = 8.92 W/kg





# RF Exposure Lab

## Plot 2

**DUT: Dipole D5GHzV2; Type: D5GHzV2; Serial: D5GHzV2 - SN: 1085**

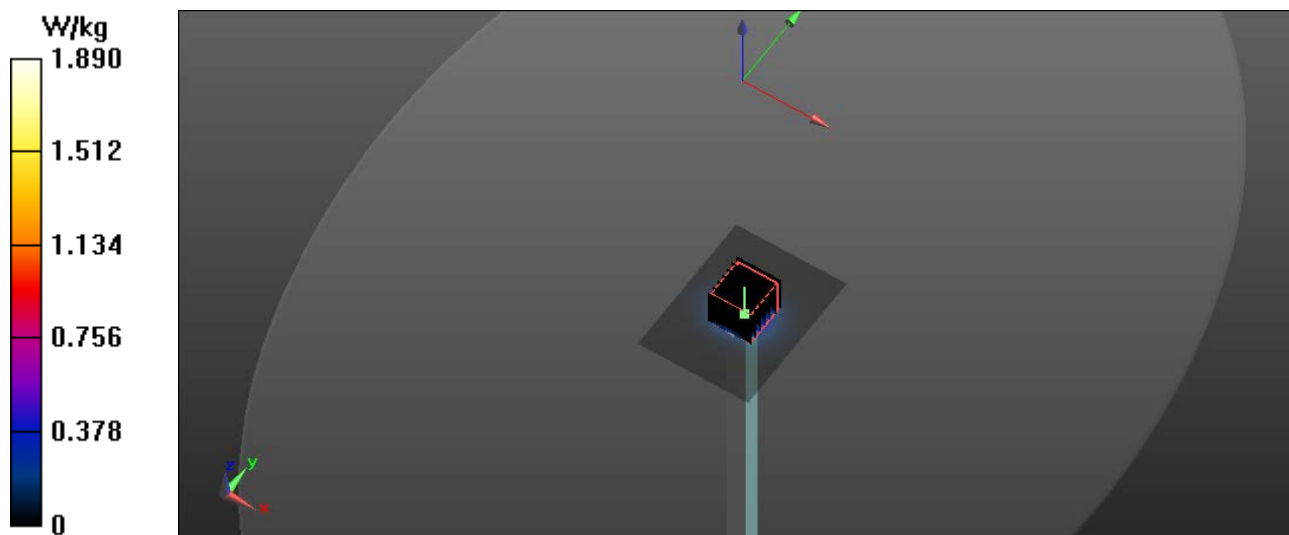
Communication System: CW; Frequency: 5200 MHz; Duty Cycle: 1:1  
Medium: MSL 3-6 GHz; Medium parameters used:  $f = 5200$  MHz;  $\sigma = 5.28$  S/m;  $\epsilon_r = 48.88$ ;  $\rho = 1000$  kg/m<sup>3</sup>  
Phantom section: Flat Section

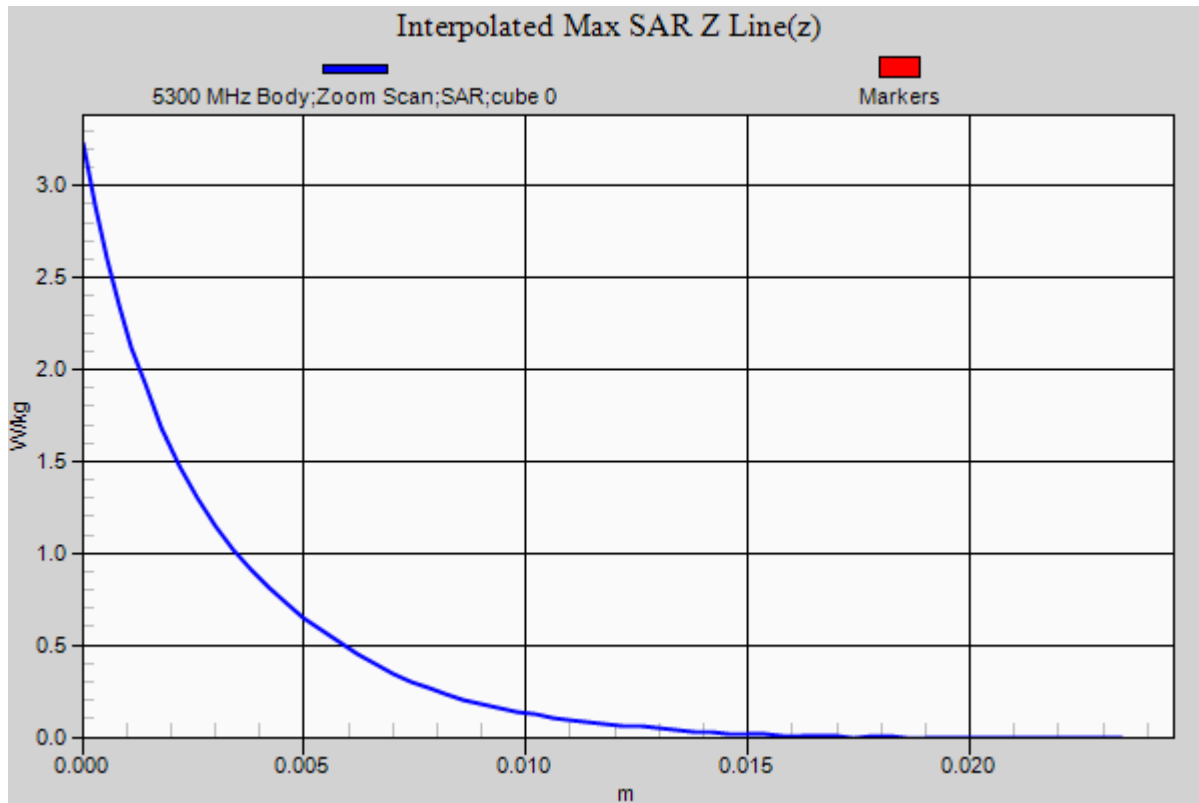
Test Date: Date: 6/22/2015; Ambient Temp: 23 °C; Tissue Temp: 21 °C  
Probe: EX3DV4 - SN3833; ConvF(4.62, 4.62, 4.62); Calibrated: 1/23/2015;  
Sensor-Surface: 2mm (Mechanical Surface Detection)  
Electronics: DAE4 Sn759; Calibrated: 8/12/2014  
Phantom: ELI v4.0; Type: QDOVA001BB; Serial: 1251  
Measurement SW: DASY52, Version 52.8 (8); SEMCAD X Version 14.6.10 (7331)

### Procedure Notes:

**Body Verification/5200 MHz/Area Scan (61x81x1):** Interpolated grid: dx=1.000 mm, dy=1.000 mm  
Maximum value of SAR (interpolated) = 1.87 W/kg

**Body Verification/5200 MHz/Zoom Scan (7x7x12)/Cube 0:** Measurement grid: dx=4mm, dy=4mm, dz=2mm  
Reference Value = 12.521 V/m; Power Drift = 0.03 dB  
Peak SAR (extrapolated) = 3.26 W/kg  
Pin=10 mW  
**SAR(1 g) = 0.73 W/kg; SAR(10 g) = 0.201 W/kg**  
Maximum value of SAR (measured) = 1.88 W/kg





# RF Exposure Lab

## Plot 3

**DUT: Dipole D5GHzV2; Type: D5GHzV2; Serial: D5GHzV2 - SN: 1085**

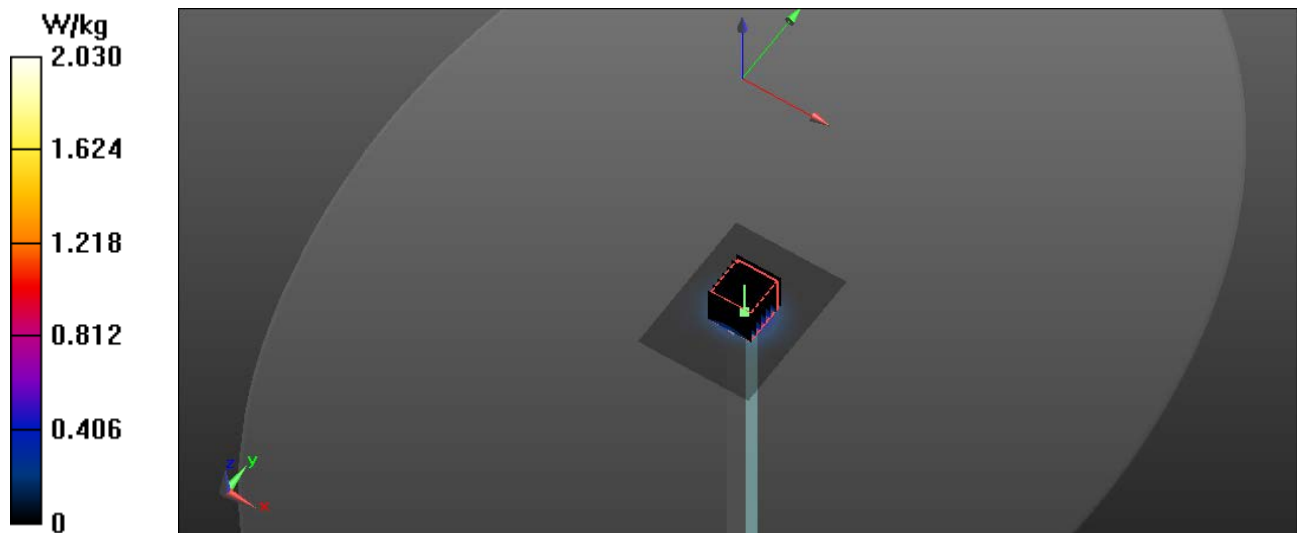
Communication System: CW; Frequency: 5600 MHz; Duty Cycle: 1:1  
Medium: MSL 3-6 GHz; Medium parameters used:  $f = 5600$  MHz;  $\sigma = 5.76$  S/m;  $\epsilon_r = 48.28$ ;  $\rho = 1000$  kg/m<sup>3</sup>  
Phantom section: Flat Section

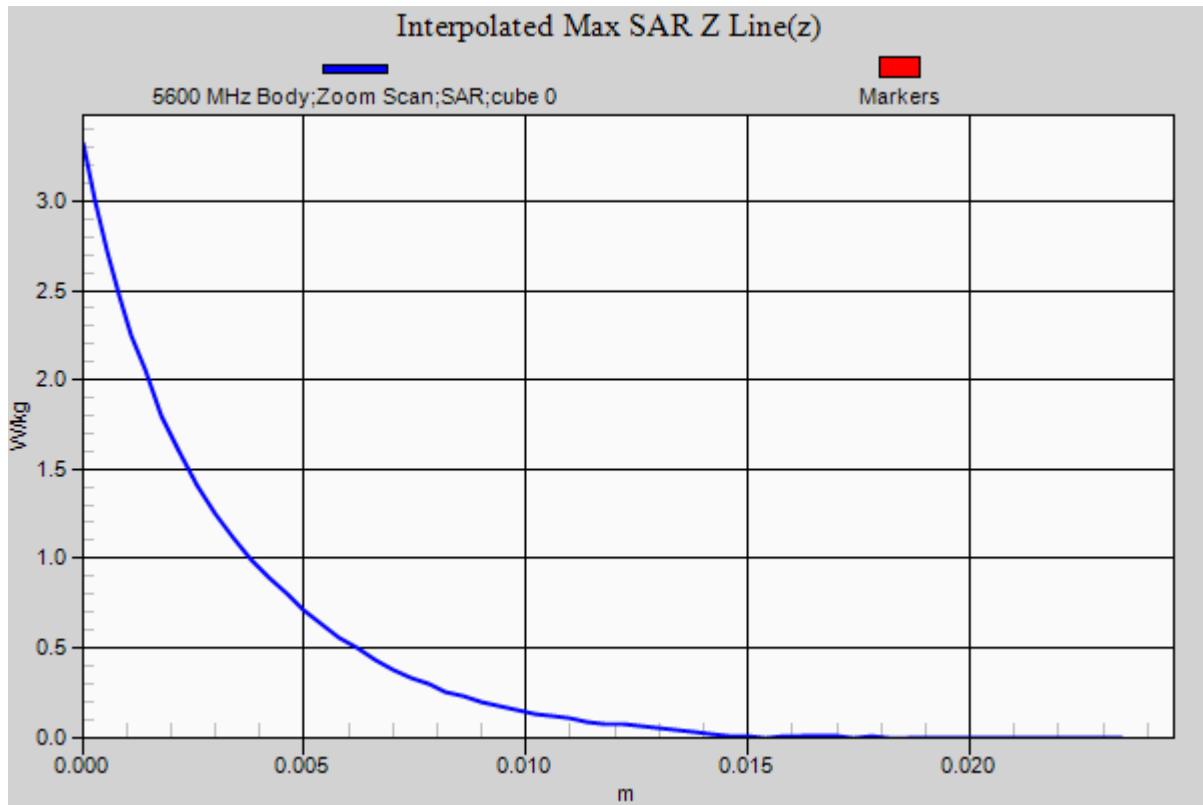
Test Date: Date: 6/22/2015; Ambient Temp: 23 °C; Tissue Temp: 21 °C  
Probe: EX3DV4 - SN3833; ConvF(4.03, 4.03, 4.03); Calibrated: 1/23/2015;  
Sensor-Surface: 2mm (Mechanical Surface Detection)  
Electronics: DAE4 Sn759; Calibrated: 8/12/2014  
Phantom: ELI v4.0; Type: QDOVA001BB; Serial: 1251  
Measurement SW: DASY52, Version 52.8 (8); SEMCAD X Version 14.6.10 (7331)

### Procedure Notes:

**Body Verification/5600 MHz/Area Scan (61x81x1):** Interpolated grid: dx=1.000 mm, dy=1.000 mm  
Maximum value of SAR (interpolated) = 2.03 W/kg

**Body Verification/5600 MHz/Zoom Scan (7x7x12)/Cube 0:** Measurement grid: dx=4mm, dy=4mm, dz=2mm  
Reference Value = 13.672 V/m; Power Drift = -0.01 dB  
Peak SAR (extrapolated) = 3.35 W/kg  
Pin=10 mW  
**SAR(1 g) = 0.796 W/kg; SAR(10 g) = 0.219 W/kg**  
Maximum value of SAR (measured) = 2.04 W/kg





# RF Exposure Lab

## Plot 4

**DUT: Dipole D5GHzV2; Type: D5GHzV2; Serial: D5GHzV2 - SN: 1085**

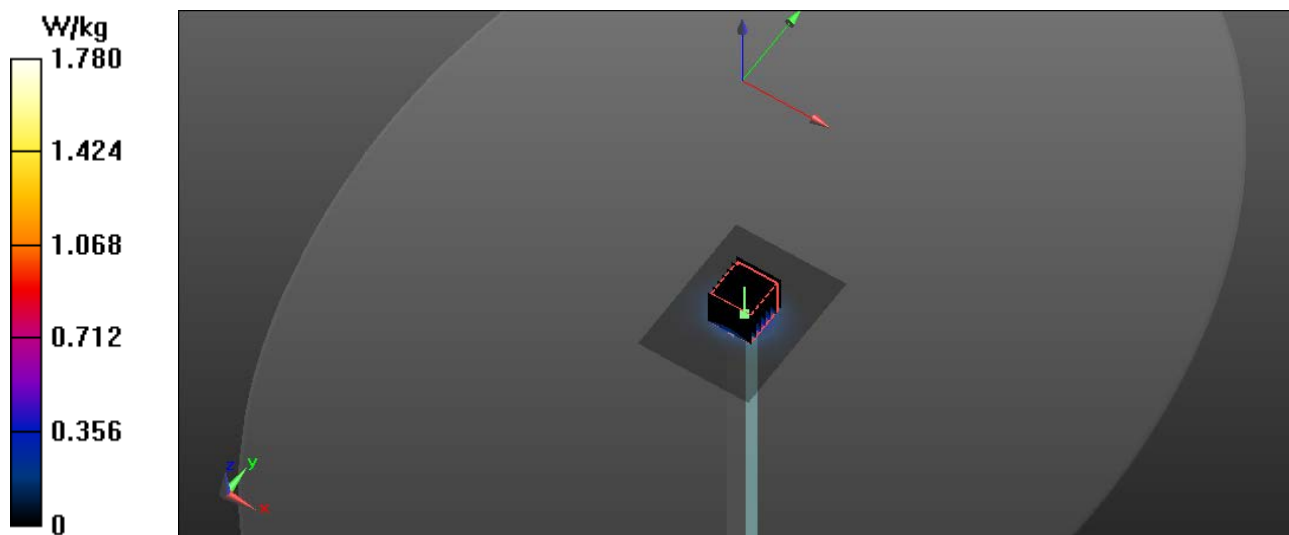
Communication System: CW; Frequency: 5800 MHz; Duty Cycle: 1:1  
Medium: MSL 3-6 GHz; Medium parameters used:  $f = 5800$  MHz;  $\sigma = 5.99$  S/m;  $\epsilon_r = 47.98$ ;  $\rho = 1000$  kg/m<sup>3</sup>  
Phantom section: Flat Section

Test Date: Date: 6/22/2015; Ambient Temp: 23 °C; Tissue Temp: 21 °C  
Probe: EX3DV4 - SN3833; ConvF(4.12, 4.12, 4.12); Calibrated: 1/23/2015;  
Sensor-Surface: 2mm (Mechanical Surface Detection)  
Electronics: DAE4 Sn759; Calibrated: 8/12/2014  
Phantom: ELI v4.0; Type: QDOVA001BB; Serial: 1251  
Measurement SW: DASY52, Version 52.8 (8); SEMCAD X Version 14.6.10 (7331)

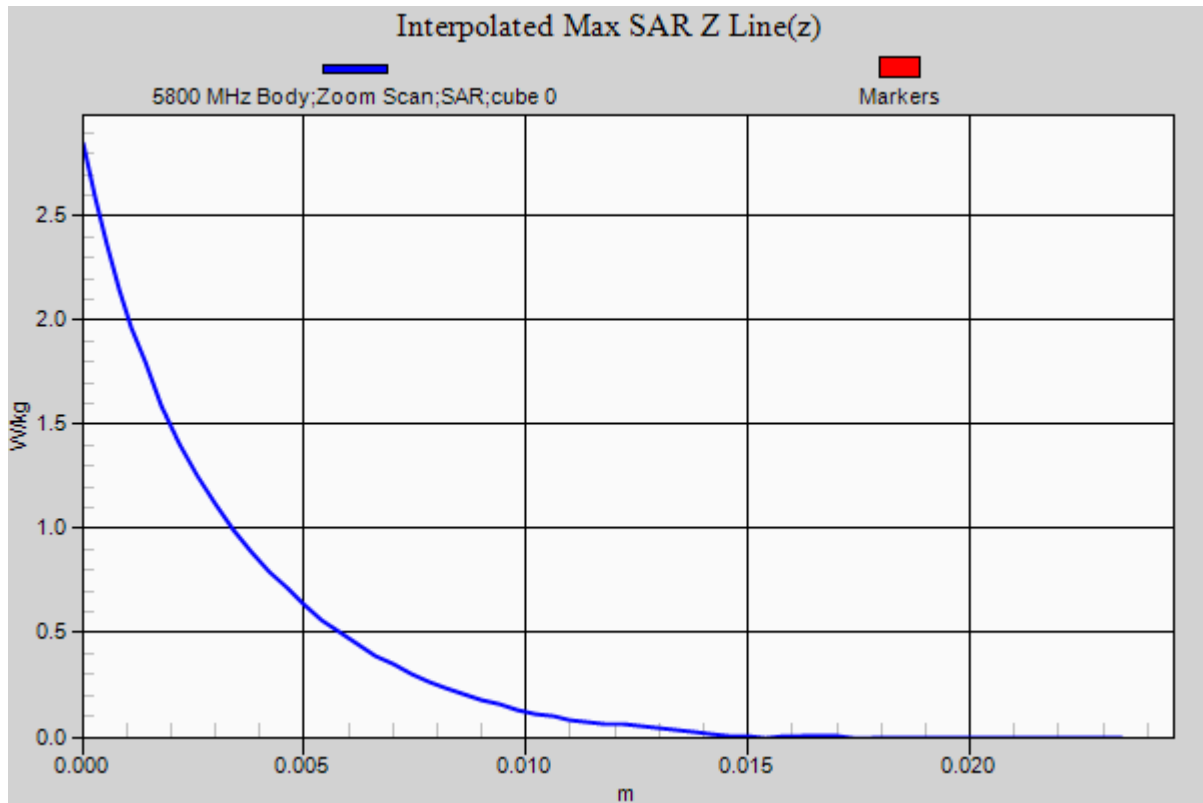
### Procedure Notes:

**Body Verification/5800 MHz/Area Scan (61x81x1):** Interpolated grid: dx=1.000 mm, dy=1.000 mm  
Maximum value of SAR (interpolated) = 1.78 W/kg

**Body Verification/5800 MHz/Zoom Scan (7x7x12)/Cube 0:** Measurement grid: dx=4mm, dy=4mm, dz=2mm  
Reference Value = 12.159 V/m; Power Drift = 0.02 dB  
Peak SAR (extrapolated) = 2.86 W/kg  
Pin=10 mW  
**SAR(1 g) = 0.725 W/kg; SAR(10 g) = 0.200 W/kg**  
Maximum value of SAR (measured) = 1.77 W/kg







## **Appendix B – SAR Test Data Plots**

# RF Exposure Lab

## Plot 1

**DUT: TPN-Q146; Type: Laptop Convertible; Serial: 5CD409167V**

Communication System: WiFi 802.11b (DSSS, 1 Mbps); Frequency: 2437 MHz; Duty Cycle: 1:1  
Medium: MSL2450; Medium parameters used (interpolated):  $f = 2437$  MHz;  $\sigma = 1.967$  S/m;  $\epsilon_r = 52.556$ ;  $\rho = 1000$  kg/m<sup>3</sup>  
Phantom section: Flat Section

Test Date: Date: 6/23/2015; Ambient Temp: 23 °C; Tissue Temp: 21 °C

Probe: EX3DV4 - SN3833; ConvF(6.69, 6.69, 6.69); Calibrated: 1/23/2015;  
Sensor-Surface: 2mm (Mechanical Surface Detection)  
Electronics: DAE4 Sn759; Calibrated: 8/12/2014  
Phantom: ELI v4.0; Type: QDOVA001BB; Serial: 1251  
Measurement SW: DASY52, Version 52.8 (8); SEMCAD X Version 14.6.10 (7331)

### Procedure Notes:

**2450 MHz/Edge Tx1 Mid/Area Scan (7x9x1):** Measurement grid: dx=10mm, dy=10mm

[Info: Interpolated medium parameters used for SAR evaluation.](#)

Maximum value of SAR (measured) = 0.318 W/kg

**2450 MHz/Edge Tx1 Mid/Zoom Scan (7x7x7)/Cube 0:** Measurement grid: dx=5mm, dy=5mm, dz=5mm

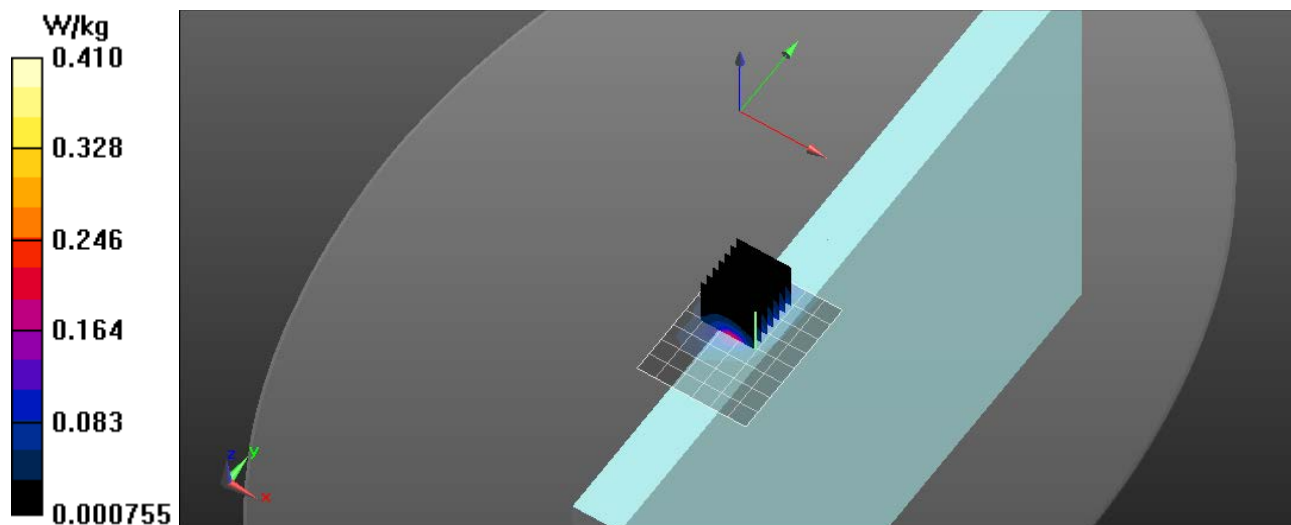
Reference Value = 8.739 V/m; Power Drift = -0.02 dB

Peak SAR (extrapolated) = 0.569 W/kg

**SAR(1 g) = 0.254 W/kg**

[Info: Interpolated medium parameters used for SAR evaluation.](#)

Maximum value of SAR (measured) = 0.410 W/kg



# RF Exposure Lab

## Plot 2

**DUT: TPN-Q146; Type: Laptop Convertible; Serial: 5CD409167V**

Communication System: WiFi 802.11a (OFDM, 6 Mbps); Frequency: 5280 MHz; Duty Cycle: 1:1  
Medium: MSL 3-6 GHz; Medium parameters used:  $f = 5280$  MHz;  $\sigma = 5.38$  S/m;  $\epsilon_r = 48.76$ ;  $\rho = 1000$  kg/m<sup>3</sup>  
Phantom section: Flat Section

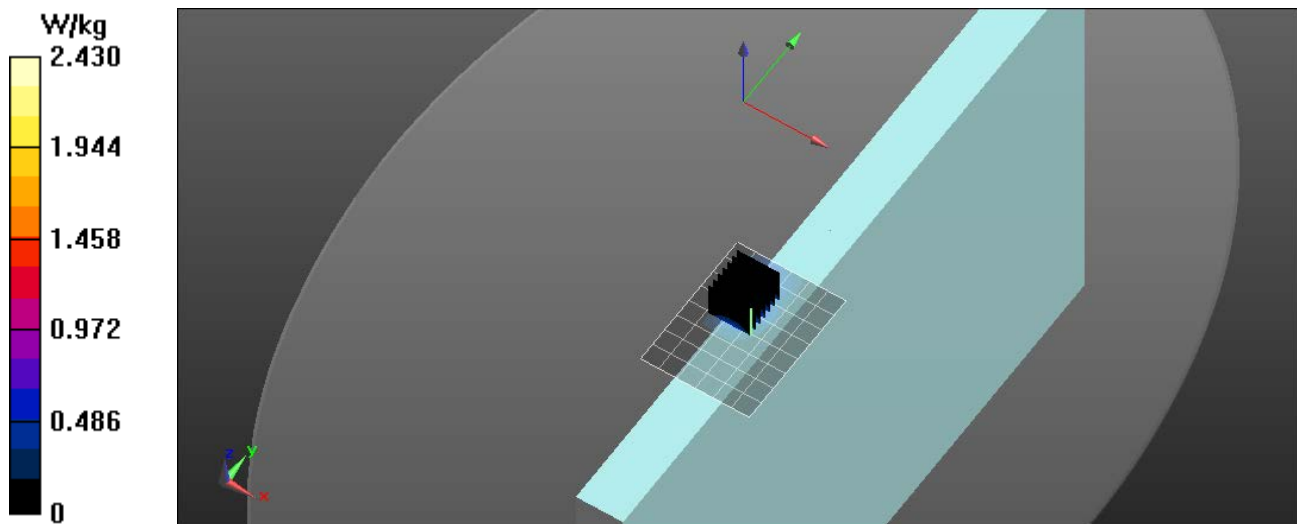
Test Date: Date: 6/23/2015; Ambient Temp: 23 °C; Tissue Temp: 21 °C

Probe: EX3DV4 - SN3833; ConvF(3.81, 3.81, 3.81); Calibrated: 1/23/2015;  
Sensor-Surface: 2mm (Mechanical Surface Detection)  
Electronics: DAE4 Sn759; Calibrated: 8/12/2014  
Phantom: ELI v4.0; Type: QDOVA001BB; Serial: 1251  
Measurement SW: DASY52, Version 52.8 (8); SEMCAD X Version 14.6.10 (7331)

### Procedure Notes:

**5200 MHz/Edge Tx1 56/Area Scan (7x9x1):** Measurement grid: dx=10mm, dy=10mm  
Maximum value of SAR (measured) = 1.44 W/kg

**5200 MHz/Edge Tx1 56/Zoom Scan (7x7x12)/Cube 0:** Measurement grid: dx=4mm, dy=4mm, dz=2mm  
Reference Value = 6.968 V/m; Power Drift = 0.01 dB  
Peak SAR (extrapolated) = 5.84 W/kg  
**SAR(1 g) = 1.05 W/kg**  
Maximum value of SAR (measured) = 2.43 W/kg



# RF Exposure Lab

## Plot 3

**DUT: TPN-Q146; Type: Laptop Convertible; Serial: 5CD409167V**

Communication System: WiFi 802.11a (OFDM, 6 Mbps); Frequency: 5580 MHz; Duty Cycle: 1:1  
Medium: MSL 3-6 GHz; Medium parameters used:  $f = 5580 \text{ MHz}$ ;  $\sigma = 5.73 \text{ S/m}$ ;  $\epsilon_r = 48.31$ ;  $\rho = 1000 \text{ kg/m}^3$   
Phantom section: Flat Section

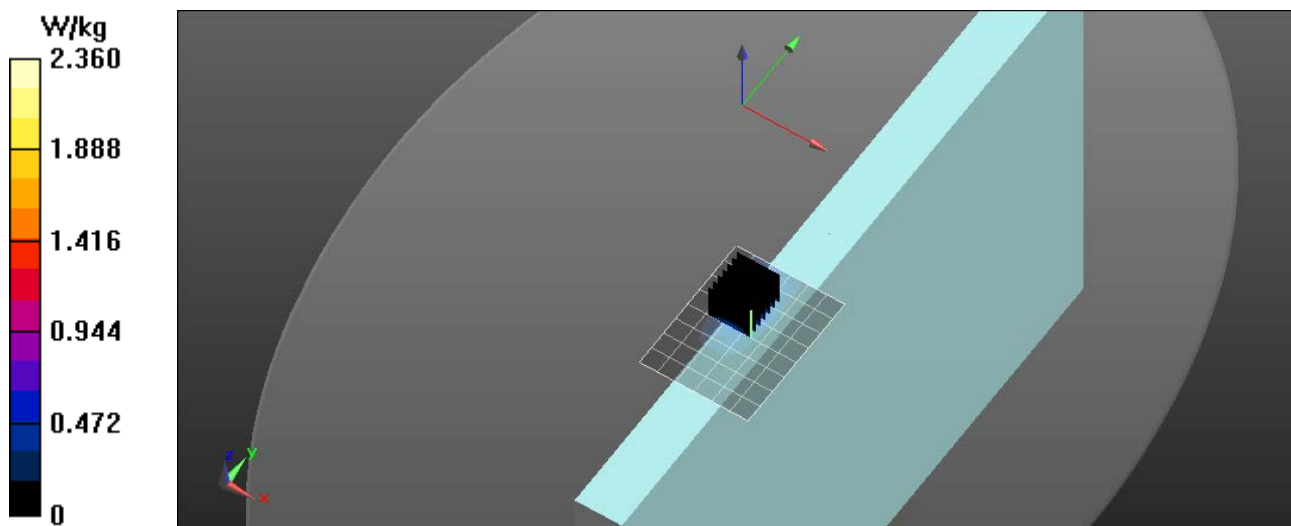
Test Date: Date: 6/23/2015; Ambient Temp: 23 °C; Tissue Temp: 21 °C

Probe: EX3DV4 - SN3833; ConvF(3.46, 3.46, 3.46); Calibrated: 1/23/2015;  
Sensor-Surface: 2mm (Mechanical Surface Detection)  
Electronics: DAE4 Sn759; Calibrated: 8/12/2014  
Phantom: ELI v4.0; Type: QDOVA001BB; Serial: 1251  
Measurement SW: DASY52, Version 52.8 (8); SEMCAD X Version 14.6.10 (7331)

### Procedure Notes:

**5600 MHz/Edge Tx1 116/Area Scan (7x9x1):** Measurement grid:  $dx=10\text{mm}$ ,  $dy=10\text{mm}$   
Maximum value of SAR (measured) = 1.32 W/kg

**5600 MHz/Edge Tx1 116/Zoom Scan (7x7x12)/Cube 0:** Measurement grid:  $dx=4\text{mm}$ ,  $dy=4\text{mm}$ ,  $dz=2\text{mm}$   
Reference Value = 6.155 V/m; Power Drift = 0.03 dB  
Peak SAR (extrapolated) = 5.47 W/kg  
**SAR(1 g) = 0.963 W/kg**  
Maximum value of SAR (measured) = 2.36 W/kg



# RF Exposure Lab

## Plot 4

**DUT: TPN-Q146; Type: Laptop Convertible; Serial: 5CD409167V**

Communication System: WiFi 802.11a (OFDM, 6 Mbps); Frequency: 5785 MHz; Duty Cycle: 1:1  
Medium: MSL 3-6 GHz; Medium parameters used (interpolated):  $f = 5785$  MHz;  $\sigma = 5.975$  S/m;  $\epsilon_r = 48.003$ ;  $\rho = 1000$  kg/m<sup>3</sup>  
Phantom section: Flat Section

Test Date: Date: 6/23/2015; Ambient Temp: 23 °C; Tissue Temp: 21 °C

Probe: EX3DV4 - SN3833; ConvF(3.57, 3.57, 3.57); Calibrated: 1/23/2015;  
Sensor-Surface: 2mm (Mechanical Surface Detection)  
Electronics: DAE4 Sn759; Calibrated: 8/12/2014  
Phantom: ELI v4.0; Type: QDOVA001BB; Serial: 1251  
Measurement SW: DASY52, Version 52.8 (8); SEMCAD X Version 14.6.10 (7331)

### Procedure Notes:

**5800 MHz/Edge Tx1 157/Area Scan (7x9x1):** Measurement grid: dx=10mm, dy=10mm

[Info: Interpolated medium parameters used for SAR evaluation.](#)

Maximum value of SAR (measured) = 1.56 W/kg

**5800 MHz/Edge Tx1 157/Zoom Scan (7x7x12)/Cube 0:** Measurement grid: dx=4mm, dy=4mm, dz=2mm

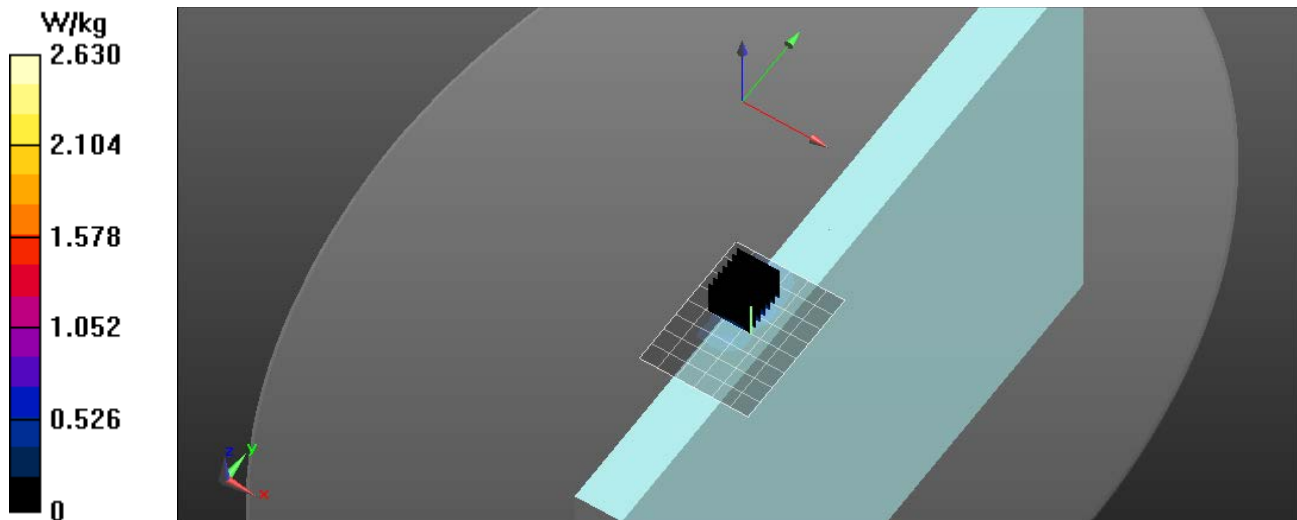
Reference Value = 5.414 V/m; Power Drift = 0.00 dB

Peak SAR (extrapolated) = 6.49 W/kg

**SAR(1 g) = 1.06 W/kg**

[Info: Interpolated medium parameters used for SAR evaluation.](#)

Maximum value of SAR (measured) = 2.63 W/kg



## **Appendix D – Probe Calibration Data Sheets**



Accredited by the Swiss Accreditation Service (SAS)

Accreditation No.: **SCS 0108**

The Swiss Accreditation Service is one of the signatories to the EA  
Multilateral Agreement for the recognition of calibration certificates

Client **RF Exposure Lab**

Certificate No: **EX3-3833\_Jan15**

## CALIBRATION CERTIFICATE

Object **EX3DV4 - SN:3833**

Calibration procedure(s) **QA CAL-01.v9, QA CAL-12.v9, QA CAL-14.v4, QA CAL-23.v5,  
QA CAL-25.v6  
Calibration procedure for dosimetric E-field probes**

Calibration date: **January 23, 2015**

This calibration certificate documents the traceability to national standards, which realize the physical units of measurements (SI).  
The measurements and the uncertainties with confidence probability are given on the following pages and are part of the certificate.

All calibrations have been conducted in the closed laboratory facility: environment temperature ( $22 \pm 3$ )°C and humidity < 70%.

Calibration Equipment used (M&TE critical for calibration)

Primary Standards	ID	Cal Date (Certificate No.)	Scheduled Calibration
Power meter E4419B	GB41293874	03-Apr-14 (No. 217-01911)	Apr-15
Power sensor E4412A	MY41498087	03-Apr-14 (No. 217-01911)	Apr-15
Reference 3 dB Attenuator	SN: S5054 (3c)	03-Apr-14 (No. 217-01915)	Apr-15
Reference 20 dB Attenuator	SN: S5277 (20x)	03-Apr-14 (No. 217-01919)	Apr-15
Reference 30 dB Attenuator	SN: S5129 (30b)	03-Apr-14 (No. 217-01920)	Apr-15
Reference Probe ES3DV2	SN: 3013	30-Dec-14 (No. ES3-3013_Dec14)	Dec-15
DAE4	SN: 660	14-Jan-15 (No. DAE4-660_Jan15)	Jan-16
Secondary Standards	ID	Check Date (in house)	Scheduled Check
RF generator HP 8648C	US3642U01700	4-Aug-99 (in house check Apr-13)	In house check: Apr-16
Network Analyzer HP 8753E	US37390585	18-Oct-01 (in house check Oct-14)	In house check: Oct-15

Calibrated by:	Name <b>Cluadio Leubler</b>	Function <b>Laboratory Technician</b>	Signature 
Approved by:	<b>Katja Pokovic</b>	<b>Technical Manager</b>	

Issued: January 26, 2015

This calibration certificate shall not be reproduced except in full without written approval of the laboratory.





Accredited by the Swiss Accreditation Service (SAS)

Accreditation No.: **SCS 0108**

The Swiss Accreditation Service is one of the signatories to the EA  
 Multilateral Agreement for the recognition of calibration certificates

### Glossary:

TSL	tissue simulating liquid
NORM <sub>x,y,z</sub>	sensitivity in free space
ConvF	sensitivity in TSL / NORM <sub>x,y,z</sub>
DCP	diode compression point
CF	crest factor (1/duty_cycle) of the RF signal
A, B, C, D	modulation dependent linearization parameters
Polarization $\phi$	$\phi$ rotation around probe axis
Polarization $\vartheta$	$\vartheta$ rotation around an axis that is in the plane normal to probe axis (at measurement center), i.e., $\vartheta = 0$ is normal to probe axis
Connector Angle	information used in DASY system to align probe sensor X to the robot coordinate system

### Calibration is Performed According to the Following Standards:

- IEEE Std 1528-2013, "IEEE Recommended Practice for Determining the Peak Spatial-Averaged Specific Absorption Rate (SAR) in the Human Head from Wireless Communications Devices: Measurement Techniques", June 2013
- IEC 62209-1, "Procedure to measure the Specific Absorption Rate (SAR) for hand-held devices used in close proximity to the ear (frequency range of 300 MHz to 3 GHz)", February 2005

### Methods Applied and Interpretation of Parameters:

- NORM<sub>x,y,z</sub>**: Assessed for E-field polarization  $\vartheta = 0$  ( $f \leq 900$  MHz in TEM-cell;  $f > 1800$  MHz: R22 waveguide). NORM<sub>x,y,z</sub> are only intermediate values, i.e., the uncertainties of NORM<sub>x,y,z</sub> does not affect the  $E^2$ -field uncertainty inside TSL (see below *ConvF*).
- NORM(f)<sub>x,y,z</sub>** = NORM<sub>x,y,z</sub> \* frequency\_response (see Frequency Response Chart). This linearization is implemented in DASY4 software versions later than 4.2. The uncertainty of the frequency response is included in the stated uncertainty of *ConvF*.
- DCP<sub>x,y,z</sub>**: DCP are numerical linearization parameters assessed based on the data of power sweep with CW signal (no uncertainty required). DCP does not depend on frequency nor media.
- PAR**: PAR is the Peak to Average Ratio that is not calibrated but determined based on the signal characteristics
- A<sub>x,y,z</sub>; B<sub>x,y,z</sub>; C<sub>x,y,z</sub>; D<sub>x,y,z</sub>; VR<sub>x,y,z</sub>; A, B, C, D** are numerical linearization parameters assessed based on the data of power sweep for specific modulation signal. The parameters do not depend on frequency nor media. VR is the maximum calibration range expressed in RMS voltage across the diode.
- ConvF and Boundary Effect Parameters**: Assessed in flat phantom using E-field (or Temperature Transfer Standard for  $f \leq 800$  MHz) and inside waveguide using analytical field distributions based on power measurements for  $f > 800$  MHz. The same setups are used for assessment of the parameters applied for boundary compensation (alpha, depth) of which typical uncertainty values are given. These parameters are used in DASY4 software to improve probe accuracy close to the boundary. The sensitivity in TSL corresponds to NORM<sub>x,y,z</sub> \* ConvF whereby the uncertainty corresponds to that given for ConvF. A frequency dependent ConvF is used in DASY version 4.4 and higher which allows extending the validity from  $\pm 50$  MHz to  $\pm 100$  MHz.
- Spherical isotropy (3D deviation from isotropy)**: in a field of low gradients realized using a flat phantom exposed by a patch antenna.
- Sensor Offset**: The sensor offset corresponds to the offset of virtual measurement center from the probe tip (on probe axis). No tolerance required.
- Connector Angle**: The angle is assessed using the information gained by determining the NORM<sub>x</sub> (no uncertainty required).

# Probe EX3DV4

## SN:3833

Manufactured: November 7, 2011  
Calibrated: January 23, 2015

Calibrated for DASY/EASY Systems  
(Note: non-compatible with DASY2 system!)

## DASY/EASY - Parameters of Probe: EX3DV4 - SN:3833

### Basic Calibration Parameters

	Sensor X	Sensor Y	Sensor Z	Unc (k=2)
Norm ( $\mu\text{V}/(\text{V}/\text{m})^2$ ) <sup>A</sup>	0.47	0.49	0.35	± 10.1 %
DCP (mV) <sup>B</sup>	101.8	100.3	103.5	

### Modulation Calibration Parameters

UID	Communication System Name		A dB	B dB $\sqrt{\mu\text{V}}$	C	D dB	VR mV	Unc <sup>E</sup> (k=2)
0	CW	X	0.0	0.0	1.0	0.00	131.5	±3.5 %
		Y	0.0	0.0	1.0		133.2	
		Z	0.0	0.0	1.0		131.7	

The reported uncertainty of measurement is stated as the standard uncertainty of measurement multiplied by the coverage factor k=2, which for a normal distribution corresponds to a coverage probability of approximately 95%.

<sup>A</sup> The uncertainties of NormX,Y,Z do not affect the E<sup>2</sup>-field uncertainty inside TSL (see Pages 5 and 6).

<sup>B</sup> Numerical linearization parameter: uncertainty not required.

<sup>E</sup> Uncertainty is determined using the max. deviation from linear response applying rectangular distribution and is expressed for the square of the field value.

## DASY/EASY - Parameters of Probe: EX3DV4 - SN:3833

### Calibration Parameter Determined in Head Tissue Simulating Media

f (MHz) <sup>C</sup>	Relative Permittivity <sup>F</sup>	Conductivity (S/m) <sup>F</sup>	ConvF X	ConvF Y	ConvF Z	Alpha <sup>G</sup>	Depth <sup>G</sup> (mm)	Unct. (k=2)
150	52.3	0.76	11.02	11.02	11.02	0.00	1.00	± 13.3 %
220	49.0	0.81	10.50	10.50	10.50	0.00	1.00	± 13.3 %
300	45.3	0.87	10.41	10.41	10.41	0.10	1.25	± 13.3 %
450	43.5	0.87	9.34	9.34	9.34	0.16	1.40	± 13.3 %
600	42.7	0.88	9.41	9.41	9.41	0.10	1.10	± 13.3 %
750	41.9	0.89	8.98	8.98	8.98	0.35	0.98	± 12.0 %
900	41.5	0.97	8.51	8.51	8.51	0.34	0.99	± 12.0 %
1640	40.3	1.29	7.50	7.50	7.50	0.23	1.08	± 12.0 %
1750	40.1	1.37	7.42	7.42	7.42	0.49	0.70	± 12.0 %
1900	40.0	1.40	7.29	7.29	7.29	0.57	0.62	± 12.0 %
2450	39.2	1.80	6.58	6.58	6.58	0.41	0.76	± 12.0 %
5200	36.0	4.66	4.62	4.62	4.62	0.35	1.80	± 13.1 %
5300	35.9	4.76	4.44	4.44	4.44	0.35	1.80	± 13.1 %
5500	35.6	4.96	4.18	4.18	4.18	0.40	1.80	± 13.1 %
5600	35.5	5.07	4.03	4.03	4.03	0.40	1.80	± 13.1 %
5800	35.3	5.27	4.12	4.12	4.12	0.40	1.80	± 13.1 %

<sup>C</sup> Frequency validity above 300 MHz of ± 100 MHz only applies for DASY v4.4 and higher (see Page 2), else it is restricted to ± 50 MHz. The uncertainty is the RSS of the ConvF uncertainty at calibration frequency and the uncertainty for the indicated frequency band. Frequency validity below 300 MHz is ± 10, 25, 40, 50 and 70 MHz for ConvF assessments at 30, 64, 128, 150 and 220 MHz respectively. Above 5 GHz frequency validity can be extended to ± 110 MHz.

<sup>F</sup> At frequencies below 3 GHz, the validity of tissue parameters ( $\epsilon$  and  $\sigma$ ) can be relaxed to ± 10% if liquid compensation formula is applied to measured SAR values. At frequencies above 3 GHz, the validity of tissue parameters ( $\epsilon$  and  $\sigma$ ) is restricted to ± 5%. The uncertainty is the RSS of the ConvF uncertainty for indicated target tissue parameters.

<sup>G</sup> Alpha/Depth are determined during calibration. SPEAG warrants that the remaining deviation due to the boundary effect after compensation is always less than ± 1% for frequencies below 3 GHz and below ± 2% for frequencies between 3-6 GHz at any distance larger than half the probe tip diameter from the boundary.

## DASY/EASY - Parameters of Probe: EX3DV4 - SN:3833

### Calibration Parameter Determined in Body Tissue Simulating Media

f (MHz) <sup>C</sup>	Relative Permittivity <sup>F</sup>	Conductivity (S/m) <sup>F</sup>	ConvF X	ConvF Y	ConvF Z	Alpha <sup>G</sup>	Depth <sup>G</sup> (mm)	Unct. (k=2)
150	61.9	0.80	11.21	11.21	11.21	0.00	1.00	± 13.3 %
220	60.2	0.86	10.20	10.20	10.20	0.00	1.00	± 13.3 %
300	58.2	0.92	10.29	10.29	10.29	0.06	1.15	± 13.3 %
450	56.7	0.94	10.02	10.02	10.02	0.08	1.12	± 13.3 %
600	56.1	0.95	9.37	9.37	9.37	0.10	1.10	± 13.3 %
750	55.5	0.96	8.75	8.75	8.75	0.24	1.32	± 12.0 %
900	55.0	1.05	8.51	8.51	8.51	0.41	0.88	± 12.0 %
1640	53.8	1.40	7.64	7.64	7.64	0.31	0.95	± 12.0 %
1750	53.4	1.49	7.18	7.18	7.18	0.34	0.93	± 12.0 %
1900	53.3	1.52	7.04	7.04	7.04	0.60	0.67	± 12.0 %
2450	52.7	1.95	6.69	6.69	6.69	0.80	0.57	± 12.0 %
5200	49.0	5.30	3.92	3.92	3.92	0.45	1.90	± 13.1 %
5300	48.9	5.42	3.81	3.81	3.81	0.45	1.90	± 13.1 %
5500	48.6	5.65	3.52	3.52	3.52	0.50	1.90	± 13.1 %
5600	48.5	5.77	3.47	3.47	3.47	0.50	1.90	± 13.1 %
5800	48.2	6.00	3.57	3.57	3.57	0.50	1.90	± 13.1 %

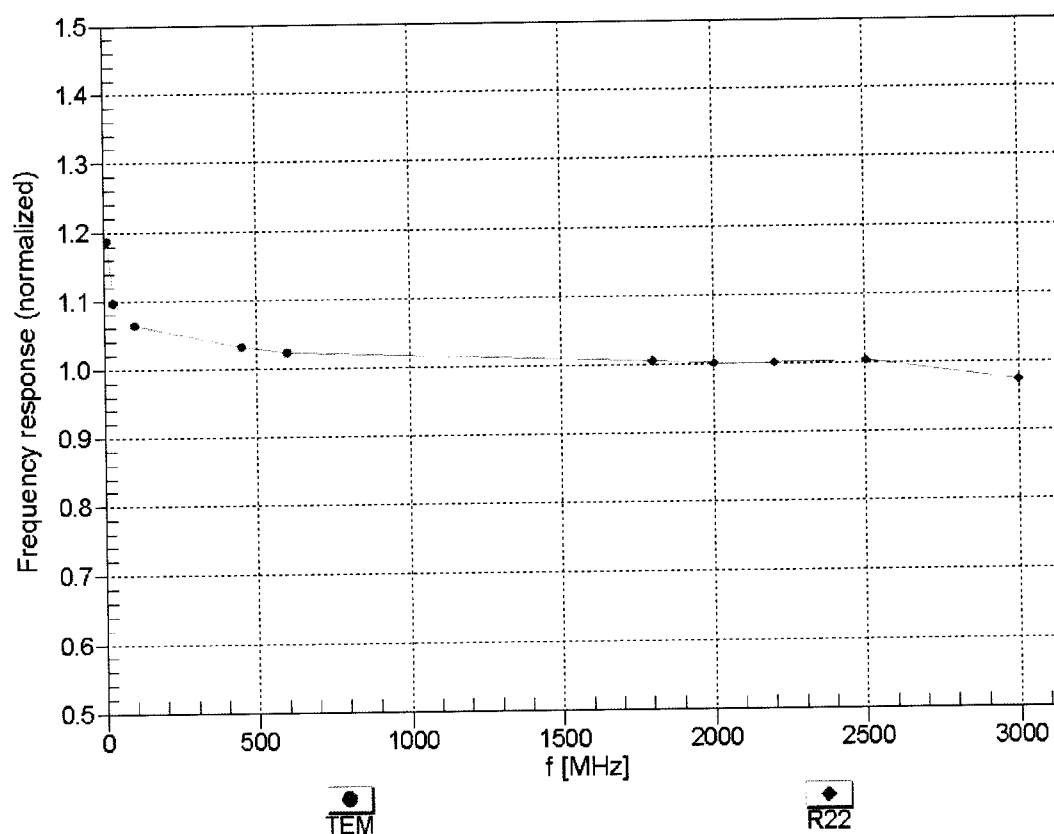
<sup>C</sup> Frequency validity above 300 MHz of ± 100 MHz only applies for DASY v4.4 and higher (see Page 2), else it is restricted to ± 50 MHz. The uncertainty is the RSS of the ConvF uncertainty at calibration frequency and the uncertainty for the indicated frequency band. Frequency validity below 300 MHz is ± 10, 25, 40, 50 and 70 MHz for ConvF assessments at 30, 64, 128, 150 and 220 MHz respectively. Above 5 GHz frequency validity can be extended to ± 110 MHz.

<sup>F</sup> At frequencies below 3 GHz, the validity of tissue parameters ( $\epsilon$  and  $\sigma$ ) can be relaxed to ± 10% if liquid compensation formula is applied to measured SAR values. At frequencies above 3 GHz, the validity of tissue parameters ( $\epsilon$  and  $\sigma$ ) is restricted to ± 5%. The uncertainty is the RSS of the ConvF uncertainty for indicated target tissue parameters.

<sup>G</sup> Alpha/Depth are determined during calibration. SPEAG warrants that the remaining deviation due to the boundary effect after compensation is always less than ± 1% for frequencies below 3 GHz and below ± 2% for frequencies between 3-6 GHz at any distance larger than half the probe tip diameter from the boundary.

## Frequency Response of E-Field

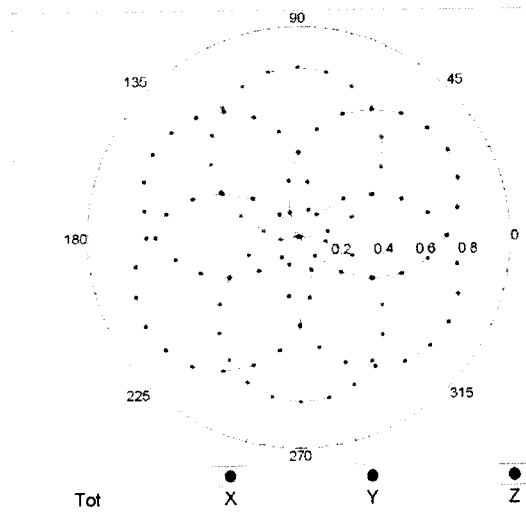
(TEM-Cell:ifi110 EXX, Waveguide: R22)



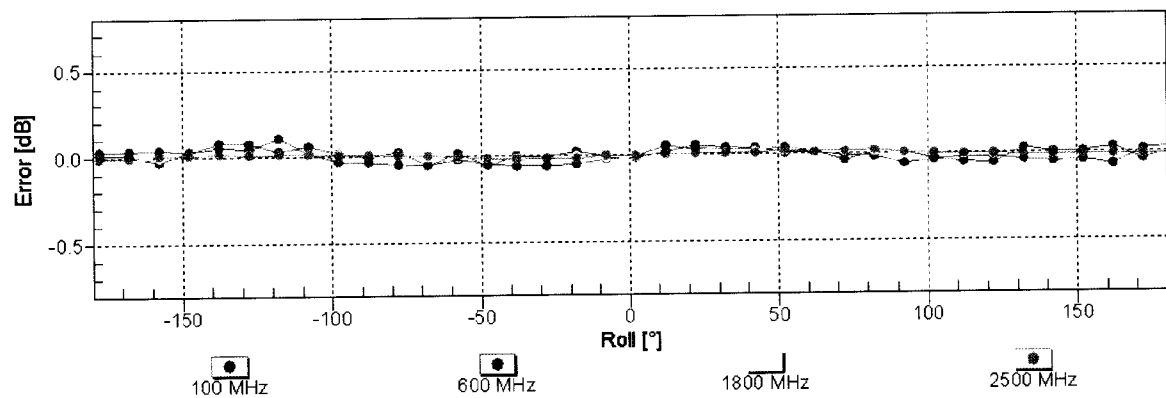
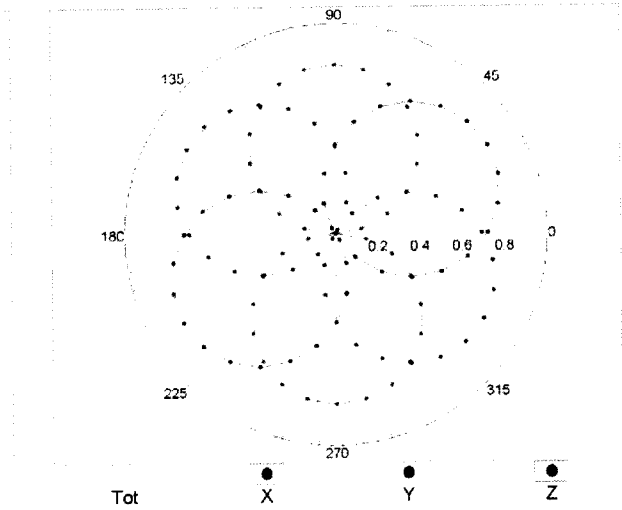
Uncertainty of Frequency Response of E-field:  $\pm 6.3\%$  ( $k=2$ )

## Receiving Pattern ( $\phi$ ), $\theta = 0^\circ$

f=600 MHz,TEM

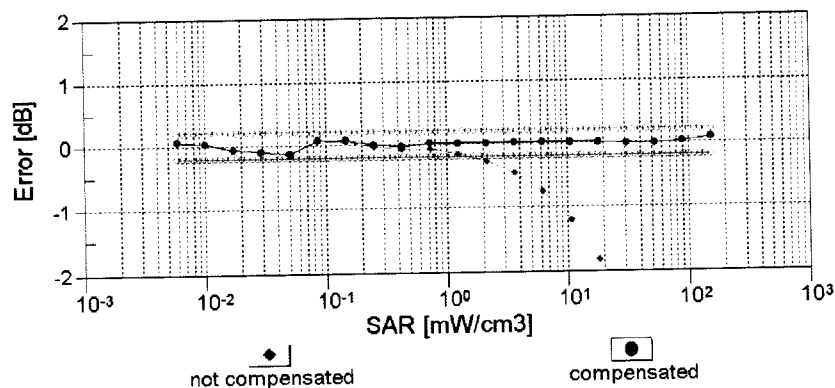
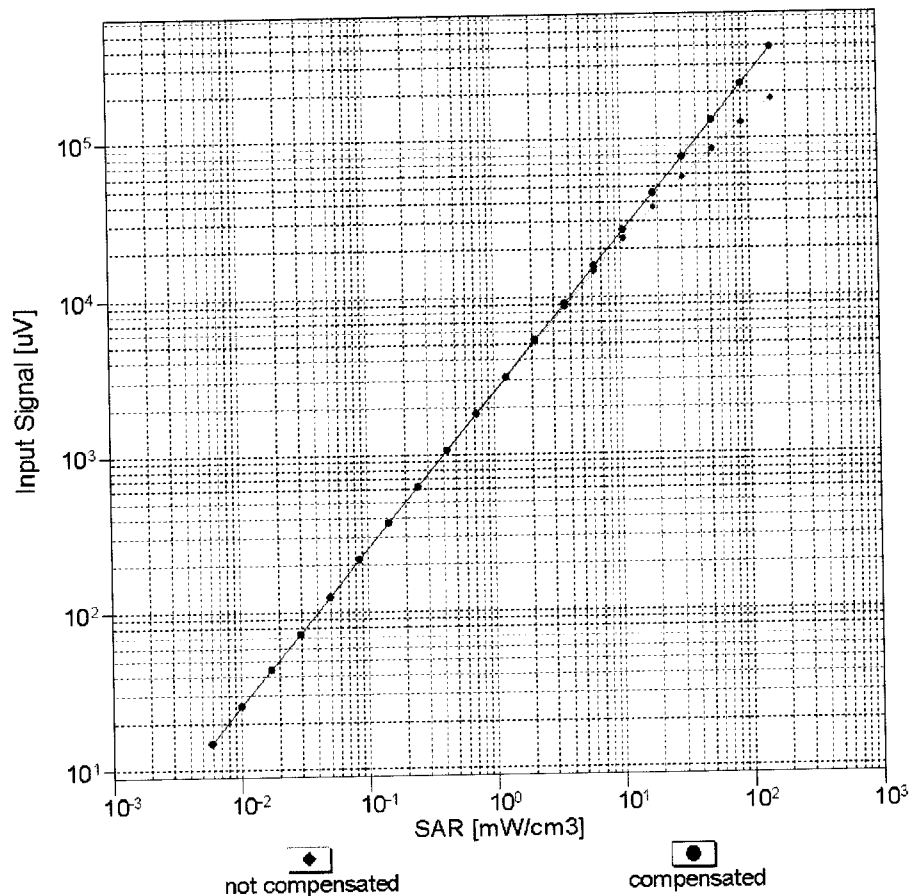


f=1800 MHz,R22



Uncertainty of Axial Isotropy Assessment:  $\pm 0.5\%$  ( $k=2$ )

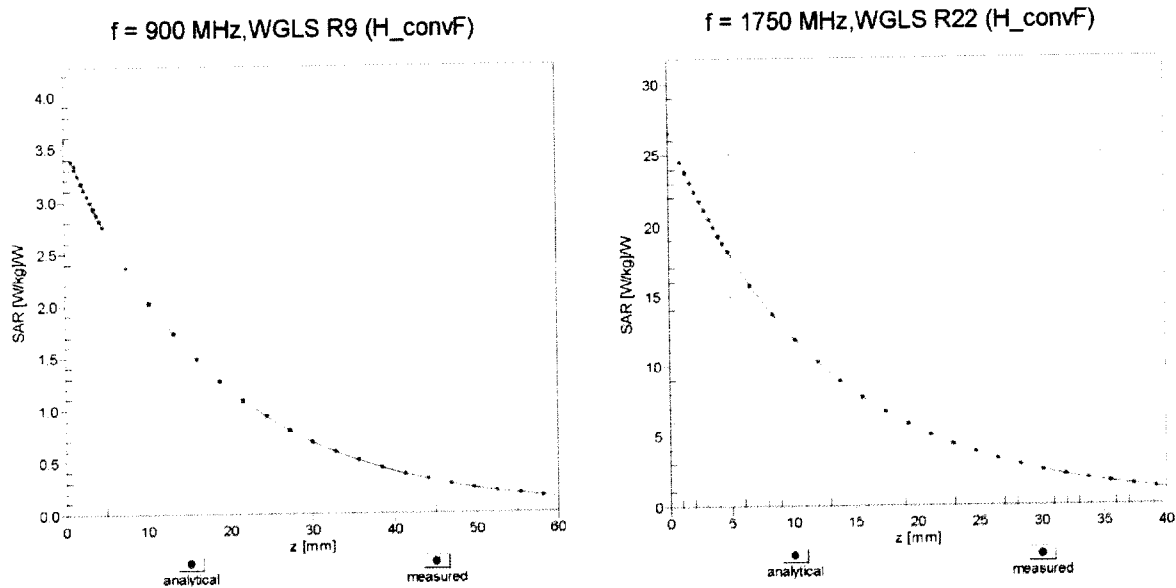
**Dynamic Range f(SAR<sub>head</sub>)**  
(TEM cell , f<sub>eval</sub>= 1900 MHz)



**Uncertainty of Linearity Assessment: ± 0.6% (k=2)**

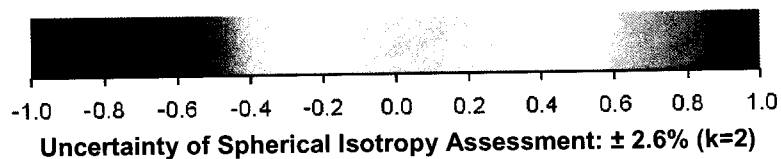
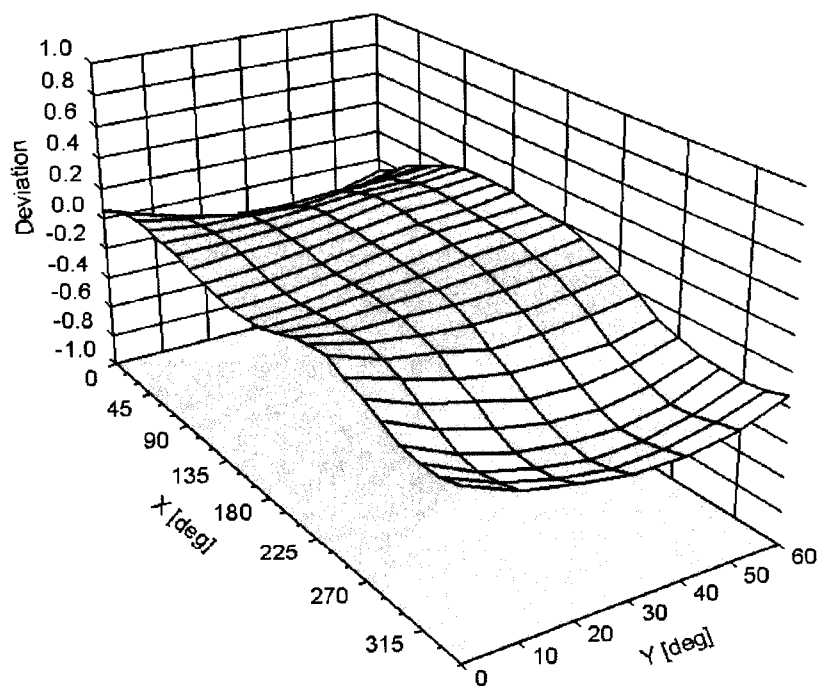


## Conversion Factor Assessment



## Deviation from Isotropy in Liquid

Error ( $\phi, \vartheta$ ),  $f = 900 \text{ MHz}$



Uncertainty of Spherical Isotropy Assessment:  $\pm 2.6\%$  ( $k=2$ )

## DASY/EASY - Parameters of Probe: EX3DV4 - SN:3833

### Other Probe Parameters

Sensor Arrangement	Triangular
Connector Angle (°)	12.2
Mechanical Surface Detection Mode	enabled
Optical Surface Detection Mode	disabled
Probe Overall Length	337 mm
Probe Body Diameter	10 mm
Tip Length	9 mm
Tip Diameter	2.5 mm
Probe Tip to Sensor X Calibration Point	1 mm
Probe Tip to Sensor Y Calibration Point	1 mm
Probe Tip to Sensor Z Calibration Point	1 mm
Recommended Measurement Distance from Surface	1.4 mm

## **Appendix E – Dipole Calibration Data Sheets**



Accredited by the Swiss Accreditation Service (SAS)  
 The Swiss Accreditation Service is one of the signatories to the EA  
 Multilateral Agreement for the recognition of calibration certificates

Accreditation No.: **SCS 108**

Client **RF Exposure Lab**

Certificate No: **D2450V2-829\_Dec12**

## CALIBRATION CERTIFICATE

Object **D2450V2 - SN: 829**

Calibration procedure(s) **QA CAL-05.v8**  
**Calibration procedure for dipole validation kits above 700 MHz**

Calibration date: **December 04, 2012**

This calibration certificate documents the traceability to national standards, which realize the physical units of measurements (SI).  
 The measurements and the uncertainties with confidence probability are given on the following pages and are part of the certificate.

All calibrations have been conducted in the closed laboratory facility: environment temperature ( $22 \pm 3$ )°C and humidity < 70%.

Calibration Equipment used (M&TE critical for calibration)

Primary Standards	ID #	Cal Date (Certificate No.)	Scheduled Calibration
Power meter EPM-442A	GB37480704	01-Nov-12 (No. 217-01640)	Oct-13
Power sensor HP 8481A	US37292783	01-Nov-12 (No. 217-01640)	Oct-13
Reference 20 dB Attenuator	SN: 5058 (20k)	27-Mar-12 (No. 217-01530)	Apr-13
Type-N mismatch combination	SN: 5047.3 / 06327	27-Mar-12 (No. 217-01533)	Apr-13
Reference Probe ES3DV3	SN: 3205	30-Dec-11 (No. ES3-3205_Dec11)	Dec-12
DAE4	SN: 601	27-Jun-12 (No. DAE4-601_Jun12)	Jun-13
Secondary Standards	ID #	Check Date (in house)	Scheduled Check
Power sensor HP 8481A	MY41092317	18-Oct-02 (in house check Oct-11)	In house check: Oct-13
RF generator R&S SMT-06	100005	04-Aug-99 (in house check Oct-11)	In house check: Oct-13
Network Analyzer HP 8753E	US37390585 S4206	18-Oct-01 (in house check Oct-12)	In house check: Oct-13

Calibrated by: **Leif Klysner**      Function: **Laboratory Technician**

Approved by: **Katja Pokovic**      Technical Manager

Signature

Issued: December 4, 2012

This calibration certificate shall not be reproduced except in full without written approval of the laboratory.



Accredited by the Swiss Accreditation Service (SAS)  
The Swiss Accreditation Service is one of the signatories to the EA  
Multilateral Agreement for the recognition of calibration certificates

### Glossary:

TSL	tissue simulating liquid
ConvF	sensitivity in TSL / NORM x,y,z
N/A	not applicable or not measured

### Calibration is Performed According to the Following Standards:

- IEEE Std 1528-2003, "IEEE Recommended Practice for Determining the Peak Spatial-Averaged Specific Absorption Rate (SAR) in the Human Head from Wireless Communications Devices: Measurement Techniques", December 2003
- IEC 62209-1, "Procedure to measure the Specific Absorption Rate (SAR) for hand-held devices used in close proximity to the ear (frequency range of 300 MHz to 3 GHz)", February 2005
- Federal Communications Commission Office of Engineering & Technology (FCC OET), "Evaluating Compliance with FCC Guidelines for Human Exposure to Radiofrequency Electromagnetic Fields; Additional Information for Evaluating Compliance of Mobile and Portable Devices with FCC Limits for Human Exposure to Radiofrequency Emissions", Supplement C (Edition 01-01) to Bulletin 65

### Additional Documentation:

- DASY4/5 System Handbook

### Methods Applied and Interpretation of Parameters:

- Measurement Conditions:** Further details are available from the Validation Report at the end of the certificate. All figures stated in the certificate are valid at the frequency indicated.
- Antenna Parameters with TSL:** The dipole is mounted with the spacer to position its feed point exactly below the center marking of the flat phantom section, with the arms oriented parallel to the body axis.
- Feed Point Impedance and Return Loss:** These parameters are measured with the dipole positioned under the liquid filled phantom. The impedance stated is transformed from the measurement at the SMA connector to the feed point. The Return Loss ensures low reflected power. No uncertainty required.
- Electrical Delay:** One-way delay between the SMA connector and the antenna feed point. No uncertainty required.
- SAR measured:** SAR measured at the stated antenna input power.
- SAR normalized:** SAR as measured, normalized to an input power of 1 W at the antenna connector.
- SAR for nominal TSL parameters:** The measured TSL parameters are used to calculate the nominal SAR result.

The reported uncertainty of measurement is stated as the standard uncertainty of measurement multiplied by the coverage factor  $k=2$ , which for a normal distribution corresponds to a coverage probability of approximately 95%.

## Measurement Conditions

DASY system configuration, as far as not given on page 1.

DASY Version	DASY5	V52.8.3
Extrapolation	Advanced Extrapolation	
Phantom	Modular Flat Phantom	
Distance Dipole Center - TSL	10 mm	with Spacer
Zoom Scan Resolution	dx, dy, dz = 5 mm	
Frequency	2450 MHz $\pm$ 1 MHz	

## Head TSL parameters

The following parameters and calculations were applied.

	Temperature	Permittivity	Conductivity
Nominal Head TSL parameters	22.0 °C	39.2	1.80 mho/m
Measured Head TSL parameters	(22.0 $\pm$ 0.2) °C	38.2 $\pm$ 6 %	1.84 mho/m $\pm$ 6 %
Head TSL temperature change during test	< 0.5 °C	----	----

## SAR result with Head TSL

SAR averaged over 1 cm <sup>3</sup> (1 g) of Head TSL	Condition	
SAR measured	250 mW input power	13.7 W/kg
SAR for nominal Head TSL parameters	normalized to 1W	53.9 W/kg $\pm$ 17.0 % (k=2)

SAR averaged over 10 cm <sup>3</sup> (10 g) of Head TSL	condition	
SAR measured	250 mW input power	6.33 W/kg
SAR for nominal Head TSL parameters	normalized to 1W	25.1 W/kg $\pm$ 16.5 % (k=2)

## Body TSL parameters

The following parameters and calculations were applied.

	Temperature	Permittivity	Conductivity
Nominal Body TSL parameters	22.0 °C	52.7	1.95 mho/m
Measured Body TSL parameters	(22.0 $\pm$ 0.2) °C	50.7 $\pm$ 6 %	2.02 mho/m $\pm$ 6 %
Body TSL temperature change during test	< 0.5 °C	----	----

## SAR result with Body TSL

SAR averaged over 1 cm <sup>3</sup> (1 g) of Body TSL	Condition	
SAR measured	250 mW input power	13.2 W/kg
SAR for nominal Body TSL parameters	normalized to 1W	51.5 W/kg $\pm$ 17.0 % (k=2)

SAR averaged over 10 cm <sup>3</sup> (10 g) of Body TSL	condition	
SAR measured	250 mW input power	6.08 W/kg
SAR for nominal Body TSL parameters	normalized to 1W	24.0 W/kg $\pm$ 16.5 % (k=2)

## Appendix

### Antenna Parameters with Head TSL

Impedance, transformed to feed point	$53.1 \Omega + 4.2 j\Omega$
Return Loss	- 25.9 dB

### Antenna Parameters with Body TSL

Impedance, transformed to feed point	$49.7 \Omega + 5.1 j\Omega$
Return Loss	- 25.9 dB

### General Antenna Parameters and Design

Electrical Delay (one direction)	1.158 ns
----------------------------------	----------

After long term use with 100W radiated power, only a slight warming of the dipole near the feedpoint can be measured.

The dipole is made of standard semirigid coaxial cable. The center conductor of the feeding line is directly connected to the second arm of the dipole. The antenna is therefore short-circuited for DC-signals. On some of the dipoles, small end caps are added to the dipole arms in order to improve matching when loaded according to the position as explained in the "Measurement Conditions" paragraph. The SAR data are not affected by this change. The overall dipole length is still according to the Standard.

No excessive force must be applied to the dipole arms, because they might bend or the soldered connections near the feedpoint may be damaged.

### Additional EUT Data

Manufactured by	SPEAG
Manufactured on	December 11, 2008

## DASY5 Validation Report for Head TSL

Date: 04.12.2012

Test Laboratory: SPEAG, Zurich, Switzerland

**DUT: Dipole 2450 MHz; Type: D2450V2; Serial: D2450V2 - SN: 829**

Communication System: CW; Frequency: 2450 MHz

Medium parameters used:  $f = 2450$  MHz;  $\sigma = 1.84$  mho/m;  $\epsilon_r = 38.2$ ;  $\rho = 1000$  kg/m<sup>3</sup>

Phantom section: Flat Section

Measurement Standard: DASY5 (IEEE/IEC/ANSI C63.19-2007)

DASY52 Configuration:

- Probe: ES3DV3 - SN3205; ConvF(4.45, 4.45, 4.45); Calibrated: 30.12.2011;
- Sensor-Surface: 3mm (Mechanical Surface Detection)
- Electronics: DAE4 Sn601; Calibrated: 27.06.2012
- Phantom: Flat Phantom 5.0 (front); Type: QD000P50AA; Serial: 1001
- DASY52 52.8.3(988); SEMCAD X 14.6.7(6848)

### Dipole Calibration for Head Tissue/Pin=250 mW, d=10mm/Zoom Scan (7x7x7)/Cube 0:

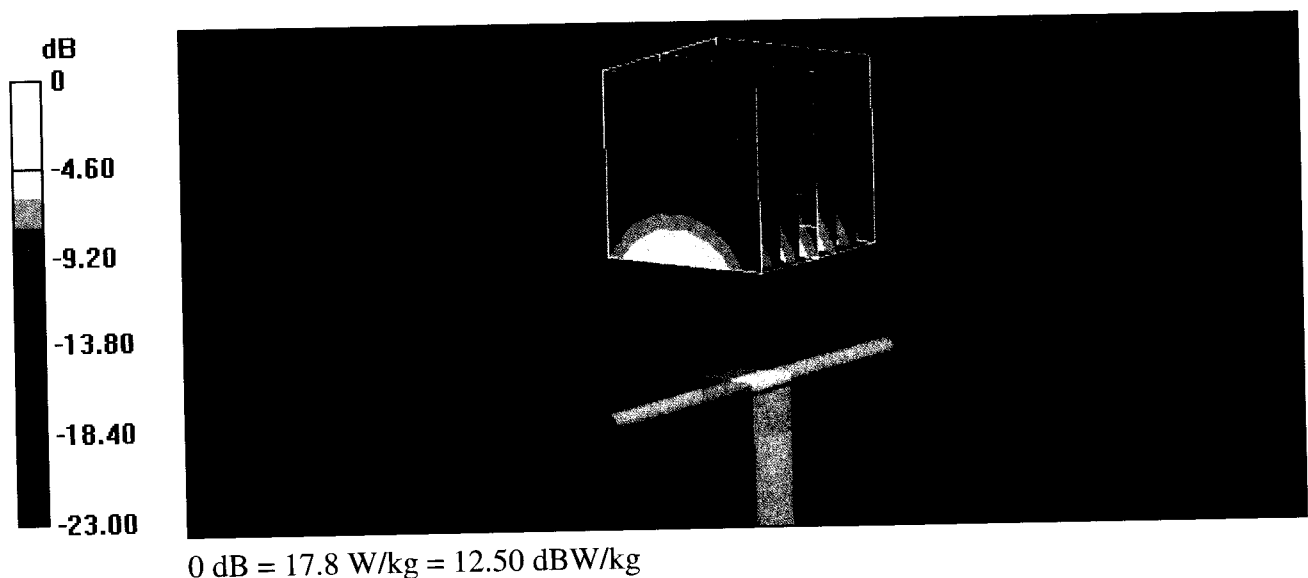
Measurement grid: dx=5mm, dy=5mm, dz=5mm

Reference Value = 102.1 V/m; Power Drift = 0.05 dB

Peak SAR (extrapolated) = 28.3 W/kg

**SAR(1 g) = 13.7 W/kg; SAR(10 g) = 6.33 W/kg**

Maximum value of SAR (measured) = 17.8 W/kg





# Impedance Measurement Plot for Head TSL

4 Dec 2012 10:08:57  
 [CH1] S11 1 U FS 1: 53.113  $\Omega$  4.1680  $\Omega$  270.76  $\mu$ H 2 450.000 000 MHz

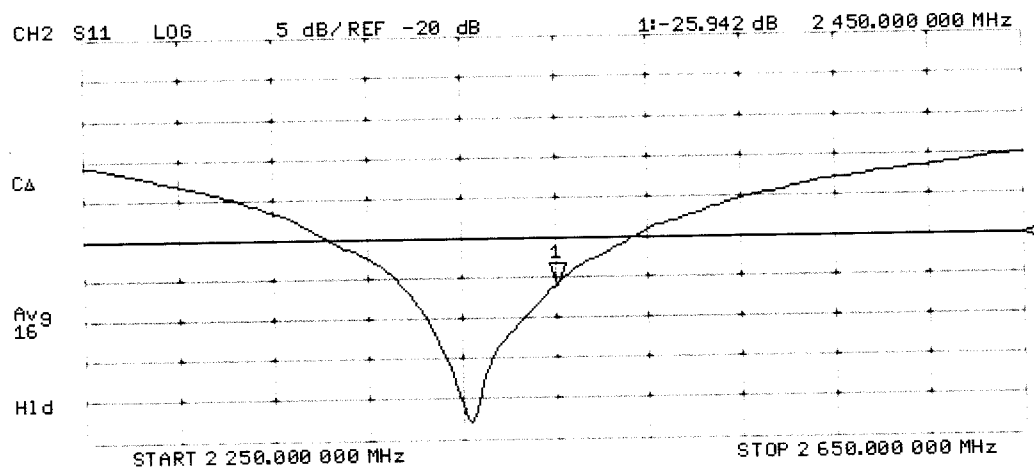
\*

De1

CA

Avg  
16

H1d



## DASY5 Validation Report for Body TSL

Date: 04.12.2012

Test Laboratory: SPEAG, Zurich, Switzerland

**DUT: Dipole 2450 MHz; Type: D2450V2; Serial: D2450V2 - SN: 829**

Communication System: CW; Frequency: 2450 MHz

Medium parameters used:  $f = 2450$  MHz;  $\sigma = 2.02$  mho/m;  $\epsilon_r = 50.7$ ;  $\rho = 1000$  kg/m<sup>3</sup>

Phantom section: Flat Section

Measurement Standard: DASY5 (IEEE/IEC/ANSI C63.19-2007)

DASY52 Configuration:

- Probe: ES3DV3 - SN3205; ConvF(4.26, 4.26, 4.26); Calibrated: 30.12.2011;
- Sensor-Surface: 3mm (Mechanical Surface Detection)
- Electronics: DAE4 Sn601; Calibrated: 27.06.2012
- Phantom: Flat Phantom 5.0 (back); Type: QD000P50AA; Serial: 1002
- DASY52 52.8.3(988); SEMCAD X 14.6.7(6848)

**Dipole Calibration for Body Tissue/Pin=250 mW, d=10mm/Zoom Scan (7x7x7)/Cube 0:**

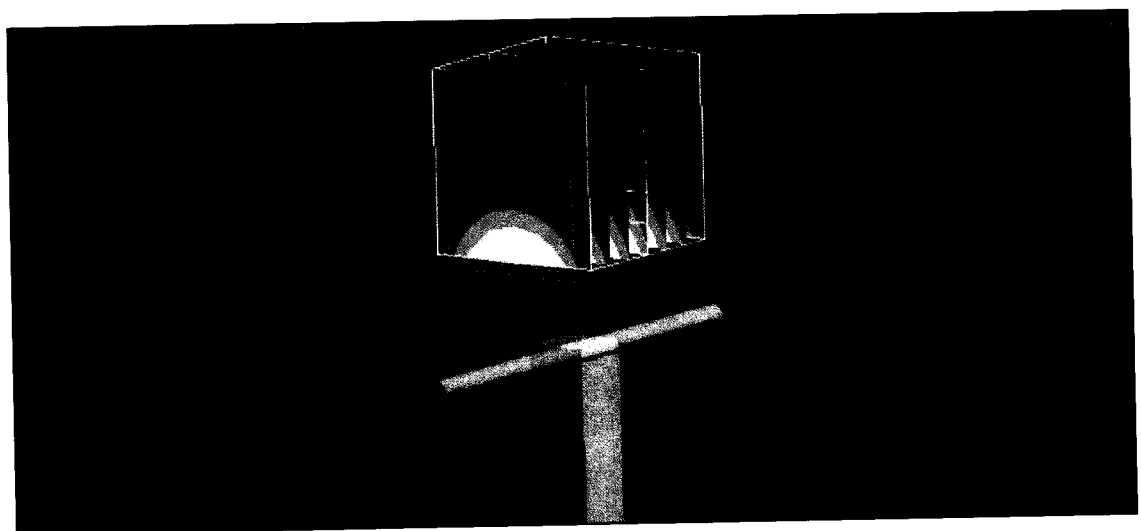
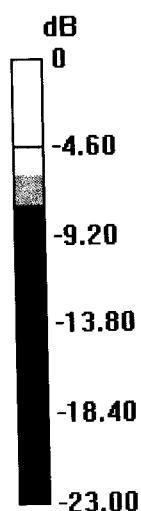
Measurement grid:  $dx=5$ mm,  $dy=5$ mm,  $dz=5$ mm

Reference Value = 102.1 V/m; Power Drift = 0.05 dB

Peak SAR (extrapolated) = 27.4 W/kg

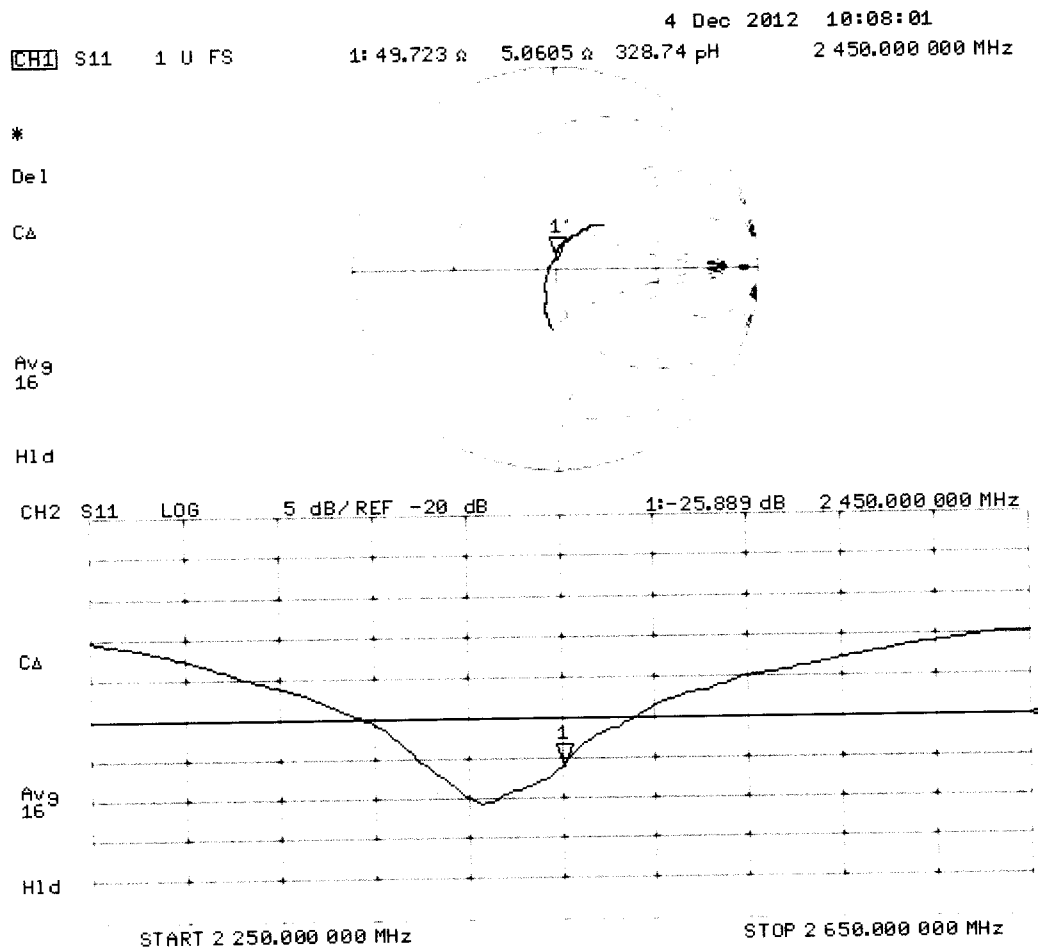
**SAR(1 g) = 13.2 W/kg; SAR(10 g) = 6.08 W/kg**

Maximum value of SAR (measured) = 17.5 W/kg



0 dB = 17.5 W/kg = 12.43 dBW/kg

## Impedance Measurement Plot for Body TSL



### Extended Calibration

Usage of SAR dipoles calibrated less than 2 years ago but more than 1 year ago were confirmed in maintaining return loss ( $< -20$  dB, within 20% of prior calibration) and impedance (within 5 ohm from prior calibration) requirements per extended calibrations in KDB Publication 865664 D01 v01r03.

D2450V2 SN: 829 - Head						
Date of Measurement	Return Loss (dB)	$\Delta\%$	Impedance ( $\Omega$ )	$\Delta\Omega$	Impedance Imaginary (j $\Omega$ )	$\Delta\Omega$
12/4/2012	-25.9		53.1		4.2	
12/5/2013	-26.5	2.3	52.6	-0.5	3.8	-0.4
12/5/2014	-24.6	-5.0	51.6	-1.5	4.9	0.7

D2450V2 SN: 829 - Body						
Date of Measurement	Return Loss (dB)	$\Delta\%$	Impedance ( $\Omega$ )	$\Delta\Omega$	Impedance Imaginary (j $\Omega$ )	$\Delta\Omega$
12/4/2012	-25.9		49.7		5.1	
12/5/2013	-26.2	1.2	48.5	-1.2	4.6	-0.5
12/4/2014	-24.6	-5.0	47.6	-2.1	5.9	0.8



Accredited by the Swiss Accreditation Service (SAS)  
 The Swiss Accreditation Service is one of the signatories to the EA  
 Multilateral Agreement for the recognition of calibration certificates

Accreditation No.: **SCS 108**

Client **RF Exposure Lab**

Certificate No: **D5GHzV2-1085\_Dec12**

## CALIBRATION CERTIFICATE

Object **D5GHzV2 - SN: 1085**

Calibration procedure(s) **QA CAL-22.v1**  
**Calibration procedure for dipole validation kits between 3-6 GHz**

Calibration date: **December 11, 2012**

This calibration certificate documents the traceability to national standards, which realize the physical units of measurements (SI).  
 The measurements and the uncertainties with confidence probability are given on the following pages and are part of the certificate.

All calibrations have been conducted in the closed laboratory facility: environment temperature ( $22 \pm 3$ )°C and humidity < 70%.

Calibration Equipment used (M&TE critical for calibration)

Primary Standards	ID #	Cal Date (Certificate No.)	Scheduled Calibration
Power meter EPM-442A	GB37480704	01-Nov-12 (No. 217-01640)	Oct-13
Power sensor HP 8481A	US37292783	01-Nov-12 (No. 217-01640)	Oct-13
Reference 20 dB Attenuator	SN: 5058 (20k)	27-Mar-12 (No. 217-01530)	Apr-13
Type-N mismatch combination	SN: 5047.3 / 06327	27-Mar-12 (No. 217-01533)	Apr-13
Reference Probe EX3DV4	SN: 3503	30-Dec-11 (No. EX3-3503_Dec11)	Dec-12
DAE4	SN: 601	27-Jun-12 (No. DAE4-601_Jun12)	Jun-13
Secondary Standards	ID #	Check Date (in house)	Scheduled Check
Power sensor HP 8481A	MY41092317	18-Oct-02 (in house check Oct-11)	In house check: Oct-13
RF generator R&S SMT-06	100005	04-Aug-99 (in house check Oct-11)	In house check: Oct-13
Network Analyzer HP 8753E	US37390585 S4206	18-Oct-01 (in house check Oct-12)	In house check: Oct-13

Calibrated by: **Israe El-Naouq** **Function**  
**Laboratory Technician**

Approved by: **Katja Pokovic** **Technical Manager**

Signature

*Israe El-Naouq*  
*Katja Pokovic*

Issued: December 11, 2012

This calibration certificate shall not be reproduced except in full without written approval of the laboratory.



Accredited by the Swiss Accreditation Service (SAS)

The Swiss Accreditation Service is one of the signatories to the EA  
Multilateral Agreement for the recognition of calibration certificates

### Glossary:

TSL	tissue simulating liquid
ConvF	sensitivity in TSL / NORM x,y,z
N/A	not applicable or not measured

### Calibration is Performed According to the Following Standards:

- IEC 62209-2, "Evaluation of Human Exposure to Radio Frequency Fields from Handheld and Body-Mounted Wireless Communication Devices in the Frequency Range of 30 MHz to 6 GHz: Human models, Instrumentation, and Procedures"; Part 2: "Procedure to determine the Specific Absorption Rate (SAR) for including accessories and multiple transmitters", March 2010
- Federal Communications Commission Office of Engineering & Technology (FCC OET), "Evaluating Compliance with FCC Guidelines for Human Exposure to Radiofrequency Electromagnetic Fields; Additional Information for Evaluating Compliance of Mobile and Portable Devices with FCC Limits for Human Exposure to Radiofrequency Emissions", Supplement C (Edition 01-01) to Bulletin 65

### Additional Documentation:

- DASY4/5 System Handbook

### Methods Applied and Interpretation of Parameters:

- Measurement Conditions:** Further details are available from the Validation Report at the end of the certificate. All figures stated in the certificate are valid at the frequency indicated.
- Antenna Parameters with TSL:** The dipole is mounted with the spacer to position its feed point exactly below the center marking of the flat phantom section, with the arms oriented parallel to the body axis.
- Feed Point Impedance and Return Loss:** These parameters are measured with the dipole positioned under the liquid filled phantom. The impedance stated is transformed from the measurement at the SMA connector to the feed point. The Return Loss ensures low reflected power. No uncertainty required.
- Electrical Delay:** One-way delay between the SMA connector and the antenna feed point. No uncertainty required.
- SAR measured:** SAR measured at the stated antenna input power.
- SAR normalized:** SAR as measured, normalized to an input power of 1 W at the antenna connector.
- SAR for nominal TSL parameters:** The measured TSL parameters are used to calculate the nominal SAR result.

The reported uncertainty of measurement is stated as the standard uncertainty of measurement multiplied by the coverage factor  $k=2$ , which for a normal distribution corresponds to a coverage probability of approximately 95%.

## Measurement Conditions

DASY system configuration, as far as not given on page 1.

<b>DASY Version</b>	DASY5	V52.8.3
<b>Extrapolation</b>	Advanced Extrapolation	
<b>Phantom</b>	Modular Flat Phantom V5.0	
<b>Distance Dipole Center - TSL</b>	10 mm	with Spacer
<b>Zoom Scan Resolution</b>	dx, dy = 4.0 mm, dz = 1.4 mm	Graded Ratio = 1.4 (Z direction)
<b>Frequency</b>	5200 MHz $\pm$ 1 MHz 5300 MHz $\pm$ 1 MHz 5600 MHz $\pm$ 1 MHz 5800 MHz $\pm$ 1 MHz	

## Head TSL parameters at 5200 MHz

The following parameters and calculations were applied.

	Temperature	Permittivity	Conductivity
<b>Nominal Head TSL parameters</b>	22.0 °C	36.0	4.66 mho/m
<b>Measured Head TSL parameters</b>	(22.0 $\pm$ 0.2) °C	34.8 $\pm$ 6 %	4.53 mho/m $\pm$ 6 %
<b>Head TSL temperature change during test</b>	< 0.5 °C	----	----

## SAR result with Head TSL at 5200 MHz

<b>SAR averaged over 1 cm<sup>3</sup> (1 g) of Head TSL</b>	Condition	
SAR measured	100 mW input power	8.20 W/kg
SAR for nominal Head TSL parameters	normalized to 1W	<b>81.4 W/kg <math>\pm</math> 19.9 % (k=2)</b>

<b>SAR averaged over 10 cm<sup>3</sup> (10 g) of Head TSL</b>	condition	
SAR measured	100 mW input power	2.35 W/kg
SAR for nominal Head TSL parameters	normalized to 1W	<b>23.3 W/kg <math>\pm</math> 19.5 % (k=2)</b>

## Head TSL parameters at 5300 MHz

The following parameters and calculations were applied.

	Temperature	Permittivity	Conductivity
<b>Nominal Head TSL parameters</b>	22.0 °C	35.9	4.76 mho/m
<b>Measured Head TSL parameters</b>	(22.0 $\pm$ 0.2) °C	34.7 $\pm$ 6 %	4.63 mho/m $\pm$ 6 %
<b>Head TSL temperature change during test</b>	< 0.5 °C	----	----

## SAR result with Head TSL at 5300 MHz

<b>SAR averaged over 1 cm<sup>3</sup> (1 g) of Head TSL</b>	Condition	
SAR measured	100 mW input power	8.35 W/kg
SAR for nominal Head TSL parameters	normalized to 1W	<b>82.9 W / kg <math>\pm</math> 19.9 % (k=2)</b>

<b>SAR averaged over 10 cm<sup>3</sup> (10 g) of Head TSL</b>	condition	
SAR measured	100 mW input power	2.39 W/kg
SAR for nominal Head TSL parameters	normalized to 1W	<b>23.7 W/kg <math>\pm</math> 19.5 % (k=2)</b>

### Head TSL parameters at 5600 MHz

The following parameters and calculations were applied.

	Temperature	Permittivity	Conductivity
Nominal Head TSL parameters	22.0 °C	35.5	5.07 mho/m
Measured Head TSL parameters	(22.0 ± 0.2) °C	34.2 ± 6 %	4.93 mho/m ± 6 %
Head TSL temperature change during test	< 0.5 °C	----	----

### SAR result with Head TSL at 5600 MHz

<b>SAR averaged over 1 cm<sup>3</sup> (1 g) of Head TSL</b>	Condition	
SAR measured	100 mW input power	8.69 W/kg
SAR for nominal Head TSL parameters	normalized to 1W	<b>86.1 W/kg ± 19.9 % (k=2)</b>

<b>SAR averaged over 10 cm<sup>3</sup> (10 g) of Head TSL</b>	condition	
SAR measured	100 mW input power	2.48 W/kg
SAR for nominal Head TSL parameters	normalized to 1W	<b>24.5 W/kg ± 19.5 % (k=2)</b>

### Head TSL parameters at 5800 MHz

The following parameters and calculations were applied.

	Temperature	Permittivity	Conductivity
Nominal Head TSL parameters	22.0 °C	35.3	5.27 mho/m
Measured Head TSL parameters	(22.0 ± 0.2) °C	34.0 ± 6 %	5.15 mho/m ± 6 %
Head TSL temperature change during test	< 0.5 °C	----	----

### SAR result with Head TSL at 5800 MHz

<b>SAR averaged over 1 cm<sup>3</sup> (1 g) of Head TSL</b>	Condition	
SAR measured	100 mW input power	8.16 W/kg
SAR for nominal Head TSL parameters	normalized to 1W	<b>80.9 W/kg ± 19.9 % (k=2)</b>

<b>SAR averaged over 10 cm<sup>3</sup> (10 g) of Head TSL</b>	condition	
SAR measured	100 mW input power	2.33 W/kg
SAR for nominal Head TSL parameters	normalized to 1W	<b>23.1 W/kg ± 19.5 % (k=2)</b>

### Body TSL parameters at 5200 MHz

The following parameters and calculations were applied.

	Temperature	Permittivity	Conductivity
Nominal Body TSL parameters	22.0 °C	49.0	5.30 mho/m
Measured Body TSL parameters	(22.0 ± 0.2) °C	46.8 ± 6 %	5.35 mho/m ± 6 %
Body TSL temperature change during test	< 0.5 °C	----	----

### SAR result with Body TSL at 5200 MHz

<b>SAR averaged over 1 cm<sup>3</sup> (1 g) of Body TSL</b>	Condition	
SAR measured	100 mW input power	7.41 W/kg
SAR for nominal Body TSL parameters	normalized to 1W	<b>73.4 W/kg ± 19.9 % (k=2)</b>

<b>SAR averaged over 10 cm<sup>3</sup> (10 g) of Body TSL</b>	condition	
SAR measured	100 mW input power	2.08 W/kg
SAR for nominal Body TSL parameters	normalized to 1W	<b>20.6 W/kg ± 19.5 % (k=2)</b>

### Body TSL parameters at 5300 MHz

The following parameters and calculations were applied.

	Temperature	Permittivity	Conductivity
Nominal Body TSL parameters	22.0 °C	48.9	5.42 mho/m
Measured Body TSL parameters	(22.0 ± 0.2) °C	46.7 ± 6 %	5.47 mho/m ± 6 %
Body TSL temperature change during test	< 0.5 °C	----	----

### SAR result with Body TSL at 5300 MHz

<b>SAR averaged over 1 cm<sup>3</sup> (1 g) of Body TSL</b>	Condition	
SAR measured	100 mW input power	7.43 W/kg
SAR for nominal Body TSL parameters	normalized to 1W	<b>73.6 W/kg ± 19.9 % (k=2)</b>

<b>SAR averaged over 10 cm<sup>3</sup> (10 g) of Body TSL</b>	condition	
SAR measured	100 mW input power	2.09 W/kg
SAR for nominal Body TSL parameters	normalized to 1W	<b>20.7 W/kg ± 19.5 % (k=2)</b>



### Body TSL parameters at 5600 MHz

The following parameters and calculations were applied.

	Temperature	Permittivity	Conductivity
Nominal Body TSL parameters	22.0 °C	48.5	5.77 mho/m
Measured Body TSL parameters	(22.0 ± 0.2) °C	46.2 ± 6 %	5.86 mho/m ± 6 %
Body TSL temperature change during test	< 0.5 °C	----	----

### SAR result with Body TSL at 5600 MHz

<b>SAR averaged over 1 cm<sup>3</sup> (1 g) of Body TSL</b>	Condition	
SAR measured	100 mW input power	7.98 W/kg
SAR for nominal Body TSL parameters	normalized to 1W	<b>79.1 W/kg ± 19.9 % (k=2)</b>

<b>SAR averaged over 10 cm<sup>3</sup> (10 g) of Body TSL</b>	condition	
SAR measured	100 mW input power	2.22 W/kg
SAR for nominal Body TSL parameters	normalized to 1W	<b>21.9 W/kg ± 19.5 % (k=2)</b>

### Body TSL parameters at 5800 MHz

The following parameters and calculations were applied.

	Temperature	Permittivity	Conductivity
Nominal Body TSL parameters	22.0 °C	48.2	6.00 mho/m
Measured Body TSL parameters	(22.0 ± 0.2) °C	45.9 ± 6 %	6.13 mho/m ± 6 %
Body TSL temperature change during test	< 0.5 °C	----	----

### SAR result with Body TSL at 5800 MHz

<b>SAR averaged over 1 cm<sup>3</sup> (1 g) of Body TSL</b>	Condition	
SAR measured	100 mW input power	7.36 W/kg
SAR for nominal Body TSL parameters	normalized to 1W	<b>72.9 W/kg ± 19.9 % (k=2)</b>

<b>SAR averaged over 10 cm<sup>3</sup> (10 g) of Body TSL</b>	condition	
SAR measured	100 mW input power	2.04 W/kg
SAR for nominal Body TSL parameters	normalized to 1W	<b>20.2 W/kg ± 19.5 % (k=2)</b>

## Appendix

### Antenna Parameters with Head TSL at 5200 MHz

Impedance, transformed to feed point	50.9 $\Omega$ - 9.9 j $\Omega$
Return Loss	- 20.2 dB

### Antenna Parameters with Head TSL at 5300 MHz

Impedance, transformed to feed point	48.7 $\Omega$ - 5.6 j $\Omega$
Return Loss	- 24.7 dB

### Antenna Parameters with Head TSL at 5600 MHz

Impedance, transformed to feed point	56.1 $\Omega$ - 4.4 j $\Omega$
Return Loss	- 23.0 dB

### Antenna Parameters with Head TSL at 5800 MHz

Impedance, transformed to feed point	51.9 $\Omega$ - 4.6 j $\Omega$
Return Loss	- 26.2 dB

### Antenna Parameters with Body TSL at 5200 MHz

Impedance, transformed to feed point	50.0 $\Omega$ - 9.5 j $\Omega$
Return Loss	- 20.5 dB

### Antenna Parameters with Body TSL at 5300 MHz

Impedance, transformed to feed point	49.7 $\Omega$ - 5.0 j $\Omega$
Return Loss	- 26.0 dB

### Antenna Parameters with Body TSL at 5600 MHz

Impedance, transformed to feed point	56.5 $\Omega$ - 3.4 j $\Omega$
Return Loss	- 23.2 dB

### Antenna Parameters with Body TSL at 5800 MHz

Impedance, transformed to feed point	53.5 $\Omega$ - 4.7 j $\Omega$
Return Loss	- 25.0 dB

## General Antenna Parameters and Design

Electrical Delay (one direction)	1.207 ns
----------------------------------	----------

After long term use with 100W radiated power, only a slight warming of the dipole near the feedpoint can be measured.

The dipole is made of standard semirigid coaxial cable. The center conductor of the feeding line is directly connected to the second arm of the dipole. The antenna is therefore short-circuited for DC-signals. On some of the dipoles, small end caps are added to the dipole arms in order to improve matching when loaded according to the position as explained in the "Measurement Conditions" paragraph. The SAR data are not affected by this change. The overall dipole length is still according to the Standard.

No excessive force must be applied to the dipole arms, because they might bend or the soldered connections near the feedpoint may be damaged.

## Additional EUT Data

Manufactured by	SPEAG
Manufactured on	December 21, 2009

## Extended Calibration

Usage of SAR dipoles calibrated less than 2 years ago but more than 1 year ago were confirmed in maintaining return loss ( $< -20$  dB, within 20% of prior calibration) and impedance (within 5 ohm from prior calibration) requirements per extended calibrations in KDB Publication 865664 D01 v01r03.

D5GHzV2 SN: 1085 - Head							
Date of Measurement	Frequency	Return Loss (dB)	$\Delta\%$	Impedance ( $\Omega$ )	$\Delta\Omega$	Impedance Imaginary ( $j\Omega$ )	$\Delta\Omega$
12/11/2012	5200 MHz	-20.2		50.9		-9.9	
12/11/2013		-21.3	5.4	51.2	0.3	-8.7	1.2
12/11/2014		-20.8	3.0	50.1	-0.8	-9.4	0.5
12/11/2012	5300 MHz	-24.7		48.7		-5.6	
12/11/2013		-24.3	-1.6	47.9	-0.8	-4.8	0.8
12/11/2014		-23.9	-3.2	47.2	-1.5	-4.2	1.4
12/11/2012	5600 MHz	-23.0		56.1		-4.4	
12/11/2013		-23.9	3.9	55.0	-1.1	-4.9	-0.5
12/11/2014		-23.5	2.2	55.8	-0.3	-3.8	1.1
12/11/2012	5800 MHz	-26.2		51.9		-4.6	
12/11/2013		-25.6	-2.3	53.1	1.2	-4.1	0.5
12/11/2014		-25.2	-3.8	52.6	0.7	-5.2	-0.6

D5GHzV2 SN: 1085 - Body							
Date of Measurement	Frequency	Return Loss (dB)	$\Delta\%$	Impedance Real ( $\Omega$ )	$\Delta\Omega$	Impedance Imaginary ( $j\Omega$ )	$\Delta\Omega$
12/11/2012	5200 MHz	-20.5		50.0		-9.5	
12/11/2013		-21.3	3.9	51.2	1.2	-8.7	0.8
12/11/2014		-21.6	5.4	49.8	-0.2	-10.2	-0.7
12/11/2012	5300 MHz	-26.0		49.7		-5.0	
12/11/2013		-25.3	-2.7	51.3	1.6	-4.6	0.4
12/11/2014		-27.1	4.2	50.3	0.6	-5.8	-0.8
12/11/2012	5600 MHz	-23.2		56.5		-3.4	
12/11/2013		-22.6	-2.6	55.9	-0.6	-3.9	-0.5
12/11/2014		-24.3	4.7	57.1	0.6	-2.8	0.6
12/11/2012	5800 MHz	-25.0		53.5		-4.7	
12/11/2013		-23.9	-4.4	52.6	-0.9	-5.7	-1.0
12/11/2014		-25.6	2.4	53.9	0.4	-4.5	0.2

## DASY5 Validation Report for Head TSL

Date: 11.12.2012

Test Laboratory: SPEAG, Zurich, Switzerland

**DUT: Dipole 5GHz; Type: D5GHzV2; Serial: D5GHzV2 - SN: 1085**

Communication System: CW; Frequency: 5200 MHz, Frequency: 5300 MHz, Frequency: 5600 MHz,  
Frequency: 5800 MHz

Medium parameters used:  $f = 5200$  MHz;  $\sigma = 4.53$  mho/m;  $\epsilon_r = 34.8$ ;  $\rho = 1000$  kg/m<sup>3</sup>, Medium parameters used:  $f = 5300$  MHz;  $\sigma = 4.63$  mho/m;  $\epsilon_r = 34.7$ ;  $\rho = 1000$  kg/m<sup>3</sup>, Medium parameters used:  $f = 5600$  MHz;  $\sigma = 4.93$  mho/m;  $\epsilon_r = 34.2$ ;  $\rho = 1000$  kg/m<sup>3</sup>, Medium parameters used:  $f = 5800$  MHz;  $\sigma = 5.15$  mho/m;  $\epsilon_r = 34$ ;  $\rho = 1000$  kg/m<sup>3</sup>

Phantom section: Flat Section

Measurement Standard: DASY5 (IEEE/IEC/ANSI C63.19-2007)

DASY52 Configuration:

- Probe: EX3DV4 - SN3503; ConvF(5.41, 5.41, 5.41); Calibrated: 30.12.2011, ConvF(5.1, 5.1, 5.1); Calibrated: 30.12.2011, ConvF(4.76, 4.76, 4.76); Calibrated: 30.12.2011, ConvF(4.81, 4.81, 4.81); Calibrated: 30.12.2011;
- Sensor-Surface: 1.4mm (Mechanical Surface Detection)
- Electronics: DAE4 Sn601; Calibrated: 27.06.2012
- Phantom: Flat Phantom 5.0 (front); Type: QD000P50AA; Serial: 1001
- DASY52 52.8.3(988); SEMCAD X 14.6.7(6848)

**Dipole Calibration for Head Tissue/Pin=100mW, dist=10mm, f=5200 MHz/Zoom Scan, dist=1.4mm (8x8x7)/Cube 0:** Measurement grid: dx=4mm, dy=4mm, dz=1.4mm

Reference Value = 64.782 V/m; Power Drift = 0.07 dB

Peak SAR (extrapolated) = 30.1 W/kg

**SAR(1 g) = 8.2 W/kg; SAR(10 g) = 2.35 W/kg**

Maximum value of SAR (measured) = 18.9 W/kg

**Dipole Calibration for Head Tissue/Pin=100mW, dist=10mm, f=5300 MHz/Zoom Scan, dist=1.4mm (8x8x7)/Cube 0:** Measurement grid: dx=4mm, dy=4mm, dz=1.4mm

Reference Value = 64.947 V/m; Power Drift = 0.04 dB

Peak SAR (extrapolated) = 31.3 W/kg

**SAR(1 g) = 8.35 W/kg; SAR(10 g) = 2.39 W/kg**

Maximum value of SAR (measured) = 19.4 W/kg

**Dipole Calibration for Head Tissue/Pin=100mW, dist=10mm, f=5600 MHz/Zoom Scan, dist=1.4mm (8x8x7)/Cube 0:** Measurement grid: dx=4mm, dy=4mm, dz=1.4mm

Reference Value = 64.857 V/m; Power Drift = 0.05 dB

Peak SAR (extrapolated) = 34.4 W/kg

**SAR(1 g) = 8.69 W/kg; SAR(10 g) = 2.48 W/kg**

Maximum value of SAR (measured) = 20.8 W/kg

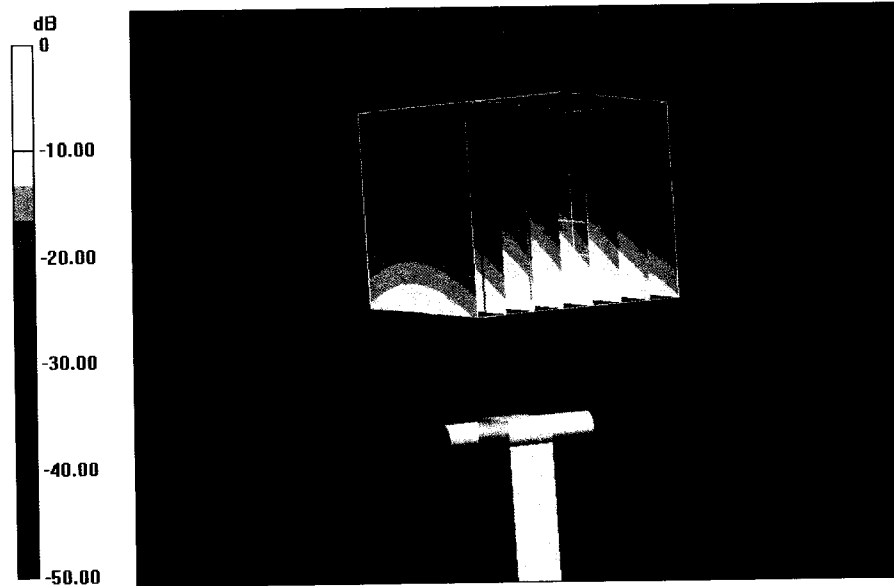
**Dipole Calibration for Head Tissue/Pin=100mW, dist=10mm, f=5800 MHz/Zoom Scan, dist=1.4mm (8x8x7)/Cube 0:** Measurement grid: dx=4mm, dy=4mm, dz=1.4mm

Reference Value = 61.816 V/m; Power Drift = 0.06 dB

Peak SAR (extrapolated) = 33.5 W/kg

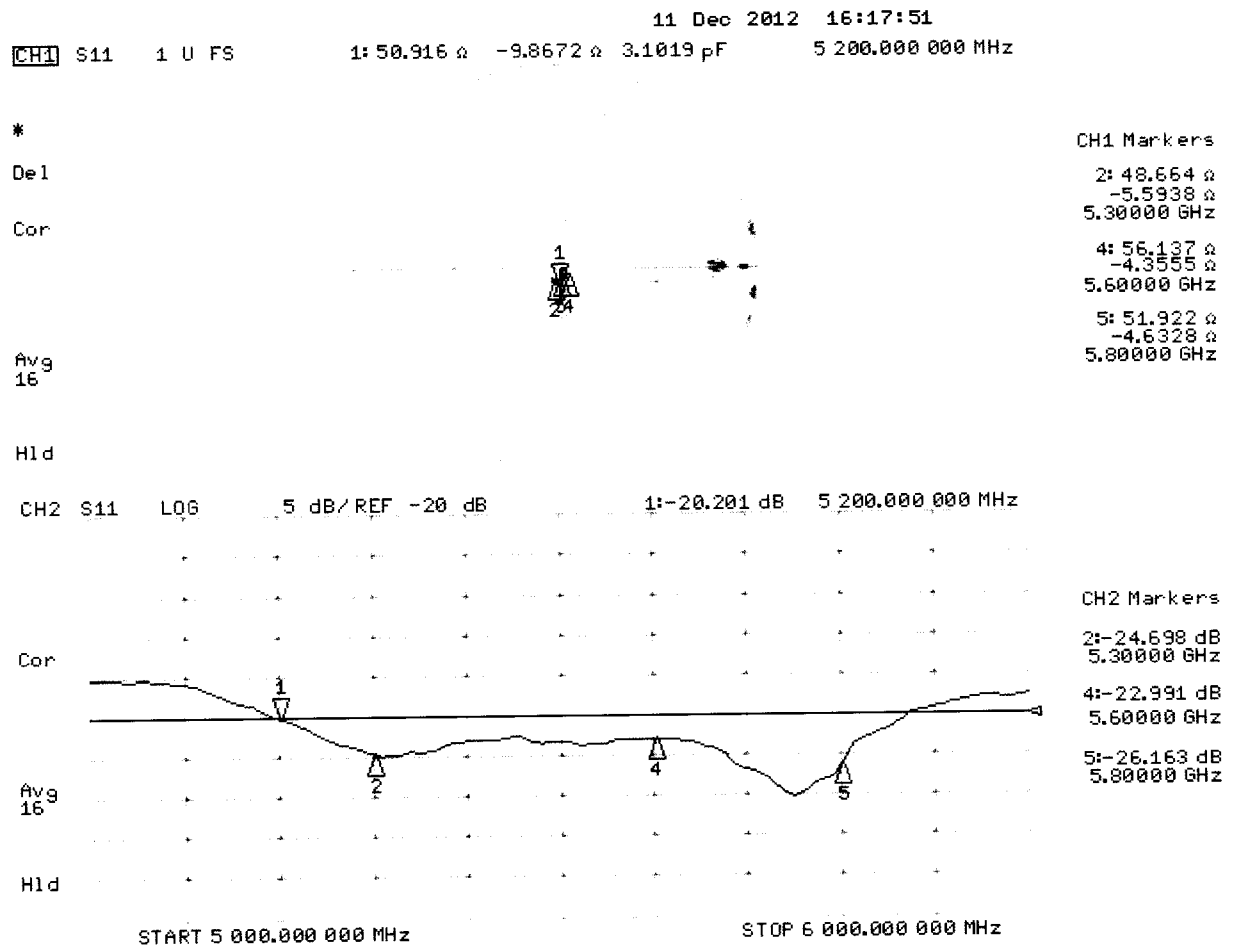
**SAR(1 g) = 8.16 W/kg; SAR(10 g) = 2.33 W/kg**

Maximum value of SAR (measured) = 19.9 W/kg



0 dB = 19.9 W/kg = 12.99 dBW/kg

# Impedance Measurement Plot for Head TSL



## DASY5 Validation Report for Body TSL

Date: 10.12.2012

Test Laboratory: SPEAG, Zurich, Switzerland

**DUT: Dipole 5GHz; Type: D5GHzV2; Serial: D5GHzV2 - SN: 1085**

Communication System: CW; Frequency: 5200 MHz, Frequency: 5300 MHz, Frequency: 5600 MHz, Frequency: 5800 MHz

Medium parameters used:  $f = 5200$  MHz;  $\sigma = 5.35$  mho/m;  $\epsilon_r = 46.8$ ;  $\rho = 1000$  kg/m<sup>3</sup>, Medium parameters used:  $f = 5300$  MHz;  $\sigma = 5.47$  mho/m;  $\epsilon_r = 46.7$ ;  $\rho = 1000$  kg/m<sup>3</sup>, Medium parameters used:  $f = 5600$  MHz;  $\sigma = 5.86$  mho/m;  $\epsilon_r = 46.2$ ;  $\rho = 1000$  kg/m<sup>3</sup>, Medium parameters used:  $f = 5800$  MHz;  $\sigma = 6.13$  mho/m;  $\epsilon_r = 45.9$ ;  $\rho = 1000$  kg/m<sup>3</sup>

Phantom section: Flat Section

Measurement Standard: DASY5 (IEEE/IEC/ANSI C63.19-2007)

DASY52 Configuration:

- Probe: EX3DV4 - SN3503; ConvF(4.91, 4.91, 4.91); Calibrated: 30.12.2011, ConvF(4.67, 4.67, 4.67); Calibrated: 30.12.2011, ConvF(4.22, 4.22, 4.22); Calibrated: 30.12.2011, ConvF(4.38, 4.38, 4.38); Calibrated: 30.12.2011;
- Sensor-Surface: 1.4mm (Mechanical Surface Detection)
- Electronics: DAE4 Sn601; Calibrated: 27.06.2012
- Phantom: Flat Phantom 5.0 (back); Type: QD000P50AA; Serial: 1002
- DASY52 52.8.3(988); SEMCAD X 14.6.7(6848)

**Dipole Calibration for Body Tissue/Pin=100mW, dist=10mm, f=5200 MHz/Zoom Scan, dist=1.4mm (8x8x7)/Cube 0:** Measurement grid: dx=4mm, dy=4mm, dz=1.4mm

Reference Value = 58.435 V/m; Power Drift = -0.01 dB

Peak SAR (extrapolated) = 29.5 W/kg

**SAR(1 g) = 7.41 W/kg; SAR(10 g) = 2.08 W/kg**

Maximum value of SAR (measured) = 17.3 W/kg

**Dipole Calibration for Body Tissue/Pin=100mW, dist=10mm, f=5300 MHz/Zoom Scan, dist=1.4mm (8x8x7)/Cube 0:** Measurement grid: dx=4mm, dy=4mm, dz=1.4mm

Reference Value = 57.938 V/m; Power Drift = -0.01 dB

Peak SAR (extrapolated) = 30.1 W/kg

**SAR(1 g) = 7.43 W/kg; SAR(10 g) = 2.09 W/kg**

Maximum value of SAR (measured) = 17.4 W/kg

**Dipole Calibration for Body Tissue/Pin=100mW, dist=10mm, f=5600 MHz/Zoom Scan, dist=1.4mm (8x8x7)/Cube 0:** Measurement grid: dx=4mm, dy=4mm, dz=1.4mm

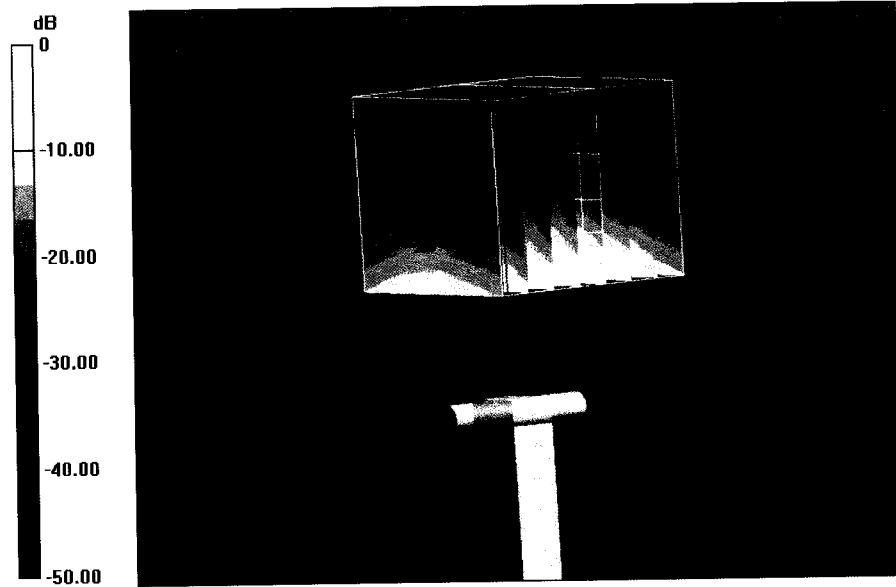
Reference Value = 58.467 V/m; Power Drift = -0.01 dB

Peak SAR (extrapolated) = 35.4 W/kg

**SAR(1 g) = 7.98 W/kg; SAR(10 g) = 2.22 W/kg**

Maximum value of SAR (measured) = 19.5 W/kg

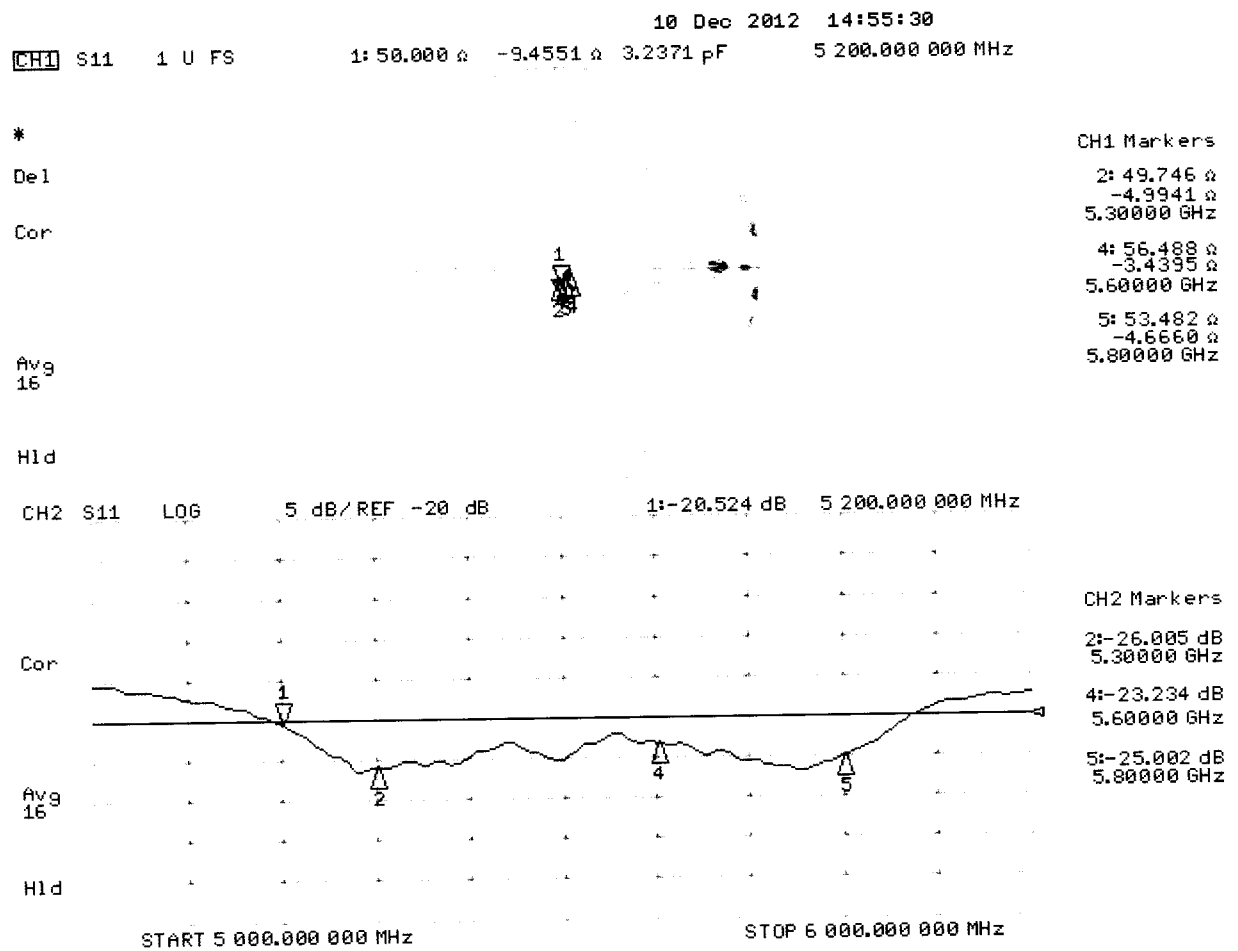
**Dipole Calibration for Body Tissue/Pin=100mW, dist=10mm, f=5800 MHz/Zoom Scan,  
dist=1.4mm (8x8x7)/Cube 0:** Measurement grid: dx=4mm, dy=4mm, dz=1.4mm  
Reference Value = 54.901 V/m; Power Drift = -0.01 dB  
Peak SAR (extrapolated) = 34.6 W/kg  
**SAR(1 g) = 7.36 W/kg; SAR(10 g) = 2.04 W/kg**  
Maximum value of SAR (measured) = 18.3 W/kg



0 dB = 18.3 W/kg = 12.62 dBW/kg



# Impedance Measurement Plot for Body TSL



## **Appendix F – Phantom Calibration Data Sheets**

## Certificate of Conformity / First Article Inspection

Item	Oval Flat Phantom ELI 4.0
Type No	QD OVA 001 B
Series No	1003 and higher
Manufacturer	Untersee Composites Knebelstrasse 8 CH-8268 Mannenbach, Switzerland

### Tests

Complete tests were made on the prototype units QD OVA 001 AA 1001, QD OVA 001 AB 1002, pre-series units QD OVA 001 BA 1003-1005 as well as on the series units QD OVA 001 BB, 1006 ff.

Test	Requirement	Details	Units tested
Material thickness	Compliant with the standard requirements	Bottom plate: 2.0mm +/- 0.2mm	all
Material parameters	Dielectric parameters for required frequencies	< 6 GHz: Rel. permittivity = 4 +/-1, Loss tangent ≤ 0.05	Material sample
Material resistivity	The material has been tested to be compatible with the liquids defined in the standards if handled and cleaned according to the instructions.	DGBE based simulating liquids. Observe Technical Note for material compatibility.	Equivalent phantoms, Material sample
Shape	Thickness of bottom material, Internal dimensions, Sagging compatible with standards from minimum frequency	Bottom elliptical 600 x 400 mm Depth 190 mm, Shape is within tolerance for filling height up to 155 mm, Eventual sagging is reduced or eliminated by support via DUT	Prototypes, Sample testing

### Standards

- [1] CENELEC EN 50361-2001, « Basic standard for the measurement of the Specific Absorption Rate related to human exposure to electromagnetic fields from mobile phones (300 MHz – 3 GHz) », July 2001
- [2] IEEE 1528-2003, "Recommended Practice for Determining the Peak Spatial-Average Specific Absorption Rate (SAR) in the Human Head from Wireless Communications Devices: Measurement Techniques, December 2003
- [3] IEC 62209 – 1, "Specific Absorption Rate (SAR) in the frequency range of 300 MHz to 3 GHz – Measurement Procedure, Part 1: Hand-held mobile wireless communication devices", February 2005
- [4] IEC 62209 – 2, Draft, "Human Exposure to Radio Frequency Fields from Handheld and Body-Mounted Wireless Communication Devices – Human models, Instrumentation and Procedures – Part 2: Procedure to determine the Specific Absorption Rate (SAR) in the head and body for 30 MHz to 6 GHz Handheld and Body-Mounted Devices used in close proximity to the Body.", February 2005
- [5] OET Bulletin 65, Supplement C, "Evaluating Compliance with FCC Guidelines for Human Exposure to Radiofrequency Electromagnetic Fields", Edition January 2001

Based on the tests above, we certify that this item is in compliance with the standards [1] to [5] if operated according to the specific requirements and considering the thickness. The dimensions are fully compliant with [4] from 30 MHz to 6 GHz. For the other standards, the minimum lower frequency limit is limited due to the dimensional requirements ([1]: 450 MHz, [2]: 300 MHz, [3]: 800 MHz, [5]: 375 MHz) and possibly further by the dimensions of the DUT.

**s p e a g**

Date 28.4.2008

Signature / Stamp

Schmid & Partner Engineering AG  
 Zeughausstrasse 43, 8004 Zurich, Switzerland  
 Phone +41 44 245 9700, Fax +41 44 245 9779  
 info@speag.com, http://www.speag.com

## Appendix G – MPE Calculations

Calculation of EIRP from maximum conducted power.

Frequency Band	Mode	Frequency Range (MHz)	Maximum Conducted output power (dBm)	Maximum Conducted output power (mW)	Duty Cycle	Equivalent conducted output power (mW)	Maximum antenna gain (dBi)	Maximum antenna gain (numerical)	EIRP (mW)
802.11	b	2412-2482	16.5	44.7	100%	44.7	1.11	1.29	57.7
	g	2412-2482	16.5	44.7	100%	44.7	1.11	1.29	57.7
	n	2412-2482	16.5	44.7	100%	44.7	1.11	1.29	57.7
	a	5180-5320	16.5	44.7	100%	44.7	0.44	1.11	49.4
	n	5180-5320	16.5	44.7	100%	44.7	0.44	1.11	49.4
	a	5500-5700	16.5	44.7	100%	44.7	1.06	1.28	57.0
	n	5500-5700	16.5	44.7	100%	44.7	1.06	1.28	57.0
	a	5745-5825	16.5	44.7	100%	44.7	0.66	1.16	52.0
	n	5745-5825	16.5	44.7	100%	44.7	0.66	1.16	52.0

Calculation of spectral power density.

Frequency Band	Mode	Frequency Range (MHz)	EIRP (mW)	Evaluation distance (R) (cm)	Power Density ( $S_{eq}$ ) $S = \frac{P \cdot G}{4\pi R^2} = \frac{EIRP}{4\pi R^2}$ (mW/cm <sup>2</sup> )	MPE limit ( $S_{lim}$ ) (mW/cm <sup>2</sup> )	Compliance ( $S_{eq} < S_{lim}$ ) (mW/cm <sup>2</sup> )
802.11	b	2412-2482	57.7	20	0.012	1.0	COMPLIANT
	g	2412-2482	57.7	20	0.012	1.0	COMPLIANT
	n	2412-2482	57.7	20	0.012	1.0	COMPLIANT
	a	5180-5320	49.4	20	0.010	1.0	COMPLIANT
	n	5180-5320	49.4	20	0.010	1.0	COMPLIANT
	a	5500-5700	57.0	20	0.011	1.0	COMPLIANT
	n	5500-5700	57.0	20	0.011	1.0	COMPLIANT
	a	5745-5825	52.0	20	0.010	1.0	COMPLIANT
	n	5745-5825	52.0	20	0.010	1.0	COMPLIANT

## Appendix H – Validation Summary

Per FCC KDB 865664 D02v01, SAR system validation status should be documented to confirm measurement accuracy. The SAR systems (including SAR probes, system components and software versions) used for this device were validated against its performance specifications prior to the SAR measurements. Reference dipoles were used with the required tissue equivalent media for system validation according to the procedures outlined in FCC KDB 865664 D01 v01 and IEEE 1528-2013. Since SAR probe calibrations are frequency dependent, each probe calibration point was validated at a frequency within the valid frequency range of the probe calibration point using the system that normally operates with the probe for routine SAR measurements and according to the required tissue equivalent media.

A tabulated summary of the system validation status including the validation date(s), measurement frequencies, SAR probes and tissue dielectric parameters has been included.

**Table H-1**  
**SAR System Validation Summary**

SAR System #	Freq. (MHz)	Date	Probe S/N	Probe Type	Probe Cal. Point		Cond. (σ)	Perm. (ε <sub>r</sub> )	CW Validation			Modulation Validation		
									Sens-itivity	Probe Linearity	Probe Isotropy	Modulation Type	Duty Factor	PAR
1	2450	2/09/2015	3833	EX3DV4	2450	Body	1.98	52.34	Pass	Pass	Pass	OFDM/TDD	Pass	Pass
1	5200	2/10/2015	3833	EX3DV4	5200	Body	5.36	48.83	Pass	Pass	Pass	OFDM	N/A	Pass
1	5300	2/10/2015	3833	EX3DV4	5300	Body	5.49	48.52	Pass	Pass	Pass	OFDM	N/A	Pass
1	5500	2/10/2015	3833	EX3DV4	5500	Body	5.79	48.04	Pass	Pass	Pass	OFDM	N/A	Pass
1	5600	2/11/2015	3833	EX3DV4	5600	Body	5.82	47.98	Pass	Pass	Pass	OFDM	N/A	Pass
1	5800	2/11/2015	3833	EX3DV4	5800	Body	6.09	47.81	Pass	Pass	Pass	OFDM	N/A	Pass