

Subsection
2.1033 (c)(1).

Manufacturer

TOSHIBA Corporation

Address1-1, Sihbaura 1-Chome, Minato-ku, Tokyo,
105-8001 Japan

Toshiba America Information System Inc.

9740 Irvine Boulevard, Irvine, California
92618-1697 U.S.A.Nanjing Postel Wong ZHI
Telecommunications co.,ltdSuning Universal Mansiong, Room 1898
188 Guanzhou Road Nanjing, China 210024MANUFACTURING LOCATION

The equipment which is the subject of this Application will initially be manufactured by Toshiba Corporation, Hino Works, Asahigaoka 3-1-1 Hino-shi, Tokyo 191-8555, Japan.

End in 2004, Toshiba Corporation plans to transfer a part of the manufacturing process for this product to the United States, at Irvine Works of Toshiba America Information Systems, Inc., 9740 Irvine Boulevard, Irvine, California 92618-1697.

When units are completed by Toshiba America Information Systems Inc. at Irvine Works, the design and initial manufacturing of the product, or least its major components, will still be done at Hino Works in Japan.

Final Assembly and Testing will be done at Irvine Works.

It has not yet been finally decided how much of the manufacturing process will be done at Irvine Works, nor has it been decided how many units will be completed at Hino Works and how many at Irvine Works. Those numbers will vary from time to time depending on market demand for the product and available plant capacity at each location.

Toshiba America Information Systems, Inc. is a wholly owned subsidiary of Toshiba Corporation.

The procedures at Irvine Works will be similar to those at Hino Works and will be designed and supervised by Hino technical personnel.

The end product will be identical in design, performance, and quality, regardless of where final assembly takes place, and will not be distinguishable by the user based on the local of final assembly.

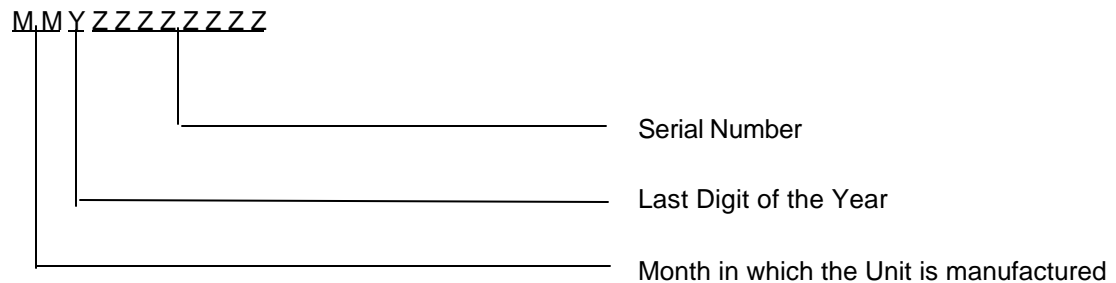
In addition to above, First in 2004, Toshiba corporation plans to transfer the manufacturing process for this product to China, at Nanjing Postel Wong ZHI Telecommunications co.,ltd.

Suning Universal Mansiong, Room 1898 188 Guanzhou Road Nanjing, China 210024.

Although, the units are completed by Nanjing Postel Wong ZHI Telecommunications co.,ltd., the design and initial manufacturing of the product has been done at Hino Works in Japan as above mentioned. And although units are completed by Nanjing Postel Wong ZHI Telecommunications co.,ltd in China, most components will still be supplied from Hino Works in Japan.

The procedures at Irvine Works and Nanjing Postel Wong ZHI Telecommunications co.,ltd will be similar to those at Hino works and will be designed and supervised by Hino technical personnel. The end product will be identical in design, performance, and quality, regardless of where final assembly takes place, and will not be distinguishable by the user based on the local of final assembly.

The FCC Identifier will be the same regardless of the location where a unit of the product is finally assembled, at Hino Works, Irvine Works or Welco China Limited. The final assembly point of any one unit may be determined by the Serial Number. The Number Assignment Rule is as follows.



Subsection

Subsection

2.1033 (c) (2) FCC ID: CJ6DCFC009001

Unit: mm

FCC ID Nameplate

A Nameplate of this type or one similar to this will be affixed to every Transceiver.

Regarding the placement of FCC ID Nameplate, see the below figure1.

For Units for which manufacture or final assembly is performed in the United States, the words MADE IN JAPAN may remain or may be changed to ASSEMBLED IN USA FROM JAPANESE COMPONENTS or a similar expression depending upon how much of the process is done in the United States and an analysis of the requirements of U.S. Customs Law under those circumstances. For Units for which manufacture or final assembly is performed in China, the words MADE IN JAPAN will be changed to MADE IN CHINA or ASSEMBLED IN CHINA.

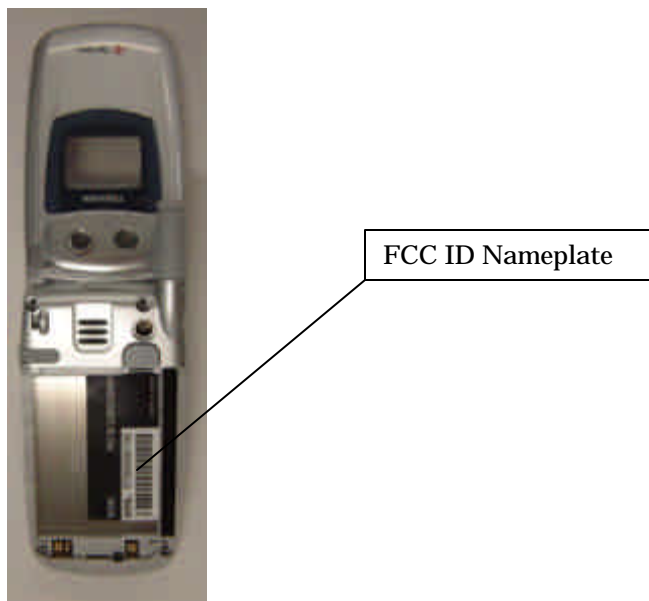


Figure1.