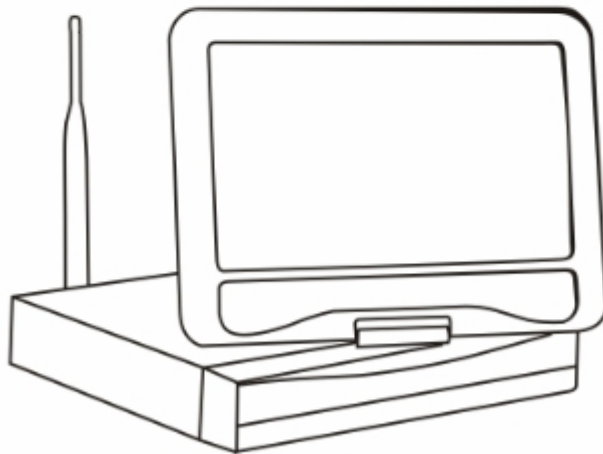
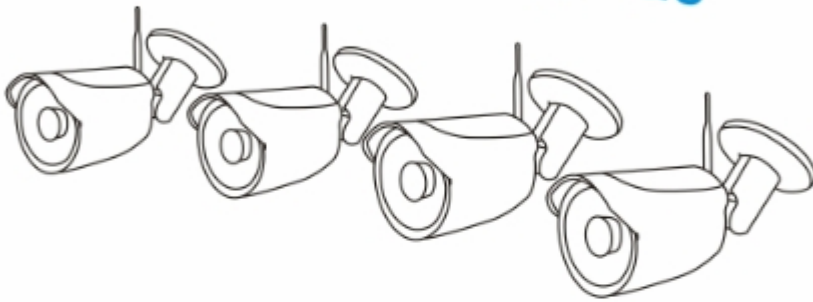


Models: 4/8CH

Wireless kit

Quick installation guide



Hardware description

1 Statement

Sincerely thanks for purchasing our products, pls contact us if any problem or requirement.

This manual is network video recorder.

This user manual may contain incorrect place in technology,place not matching with product Function or operation, or printing mistake.

We will update our user manual according to our updating in product,and will periodically Improve or updating the product and programming.the updating content will add in the new User manual, we won't inform.

If the product's description in user manual is inconsistent with the real products, pls based on The real products.

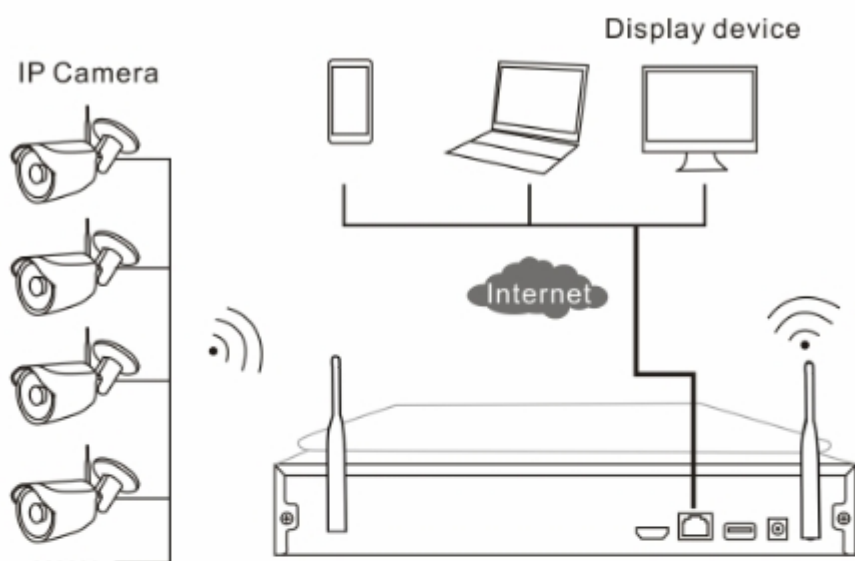
2 Safety cautions

- 1.Pls don't put a container with liquid on DVR (like Vase).
- 2.DVR should put at a ventilation place,and prevent clogged the ventilation hole.
- 3.Check the power voltage,in case if damage by wrong voltage.
- 4.DVR should work at the technical standard range of temperature and humidity.
- 5.Place DVR on level,pls avoid installing at a sharp pounding place.
- 6.Moisture dust in PCB will cause short,circuit,for long-term use of the DVR,you can Periodically remove dust in PCB by brush.
- 7.It will cause burst if replace battery in wrong way,we don't suggest user to replace by Himself,if need replace,only use the same type or equivalent type battery,pls don't try to Open or maintain the battery.
- 8.DVR installation need according to specification,you can take the national or local standard As reference.

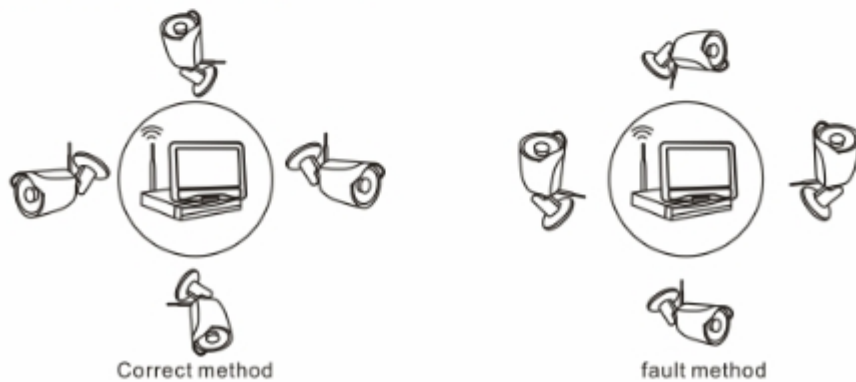
3 Open-package inspection

After receive product,pls open giftbox,remove NVR and put it on suitable place,check accessories.If any damage or lack,kindly pls contact to the distributor

4 Installation diagram



5 Antenna location



The signal coverage of Antenna is similar to a round circle. Antenna located in center of the round circle, signal of surrounding is much stronger, but much weaker if antenna end points back off direction. according to the signal divergency characteristics of antenna, and in order to guarantee the video quality, IPC antenna should try to keep in parallel or tangent with NVR antenna.

6 HD Install

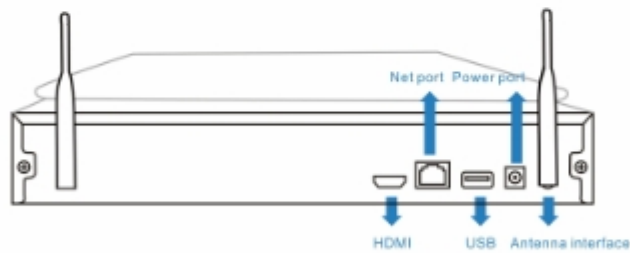
Notice that the HDD had been used need supplier recommend, and need make sure already cut off the power.

Install Steps:

1. Remove the screw of the dvr
2. Connect the HDD cable and power line
3. Assemble the screw, and fix the HDD in the bottom of NVR
4. Close the cover and fix it



7 Rear Panel Description



8 Turn on/off

Confirm that AC voltage accessible matches with DVR. Ensure that the DVR power outlet connect with a good middle ground grounding. After switching power, the device started, 【POWER】 light is on. Turn into system, if the panel status light flashing, it's normal conditions.

9 NVR,IPC parameter list

NVR parameter			
Operating System	Embedded linux OS		
AV(audio/video)input	Network Video	4CH	8CH
	Network Video input broadband	20Mbps	
AV(audio/video) output	HDMI input	1ch, resolution: 1024x768, 1336x768, 1440x900,1920x1080P	
	VGA output	1ch, resolution: 1024x768, 1336x768, 1440x900,1920x1080P	
AV CODEC	Video Resolution	DI/720P/960P	
Specification	synch-playback	4CH	8CH
Video Control	Video/Capture mode	Manual,Time,Motion,Alarm	
	Playback mode	Real time ,Routine,Event	
	Backup	USB backup	
HDD	Type	1*SATA interface	
	Max Capacity	4 TB at most for each	
External Interface	Network Interface	1 adaptable RJ45 10M/100M, 2 WIFI interface	
	USB Interface	2 USB 2.0	
Network Control	Protocol	UPnP (play&plug),SMTP(email service), PPPoE (dial-up),DHCP (Automatically Obtain an Ip address),etc...	
Others	Power	DC 12V 3A	
	Consumption(excluding HDD)	≤5W	
	Working Temperature	-10℃—55℃	
	Working Humidity	10%—90%	
	Size	257x210x45mm	
	Weight(excluding HDD)	≤1Kg	

IPC Specification

Sensor	1/3"Progressive Scan Sensor	1/4"Progressive Scan Sensor
Signal System	PAL/NTSC	PAL/NTSC
Resolution	1280x960 16:9HD	1280x720 16:9HD
Minimum illumination	Color:0.1Lux;B/W:0.01Lux	
Shutter	1/25s to 1/25,000s	
Lens	4mm	3.6mm
OSD	Date Time & Title	
White Balance	Auto	
Day&Night	Auto/Color/BW	
3D-DNR	Auto	
Mirror/Flip	On/Off	
Frame Specification	Three Streaming at the Same Time: H.264 1280x960@30fps or below H.264 640x480@30fps or below	
S/N	>39.1 Db	
Interface	RJ45/WIFI 802.11b/g/n	
Anti-thunder Level	Standard IEC61000-4-5	
Working Temperature/Humidity	-10°C to +50°C / 30% to 80% RH	
Working Temperature/Humidity	-20°C to +60°C / 20% to 90% RH	
Power Input	DC12V-1A	
Power consumption	≤6W	
Size	205(L)×70(W)×55 (H)mm	
Weight	500g	
Level of Protection	IP66	

Software operation

1 Add camera by matching code

Steps: right click the blank of main interface -> click "System Setup" System Setup->"Channel Setup"->"Channel Setup". Click "quick adding", then Pop up "video manage" Two ways for Wireless NVR to add IPC "Code Add" and "Auto Add".

Adding camera by matching code, the camera transmits video images through wireless and NVR, IP is 17.20.14.X;

Auto adding the camera, the camera transmits video images through the cable and NVR, IP is 172.25.123.X;

Note: the camera has been matched by factory, no need to add other cameras. If you need to match one code. Firstly, take one network cable and connect any NVR lan port and power on the device to make sure there is still have any channel can add one camera.

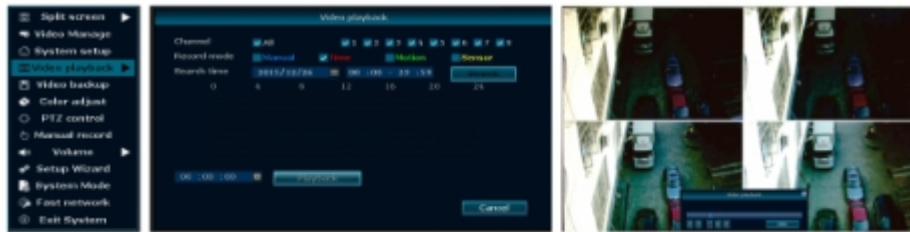


2 Video playback

Step: Right click mouse in main menu —Video playback —choose channel NO.—choose record mode —in Search time, input beginning time and end time —click search, recording will

Come out, drag time bar —click playback to start

Tips: Playback icon introduction: ⏮ playback 1 frame previous ⏭ playback 1 frame next ▶ play ⏸ puse ⏩ fast forward x2,x4,x8



3 Video backup

Step: Right click mouse in main menu —Video backup —choose channel No.—choose record mode —in Search time ,input beginning time and end time —click Search,recording will come out —choose the cideo which need to backup —click video backup

Tips: Support 32G U disk backup max ,recording will be packed every one hour



4 Video detection

Step 1:Right click mouse in mian menu →System setup →Record setup → choose motion→choose all →click Copy to →click OK to save setting.

Step 2:Choose Video detection → set sensitivity as required→ choose motion→set Alarm,Bizzar or Email as required→click Copy to→click OK to save setting .

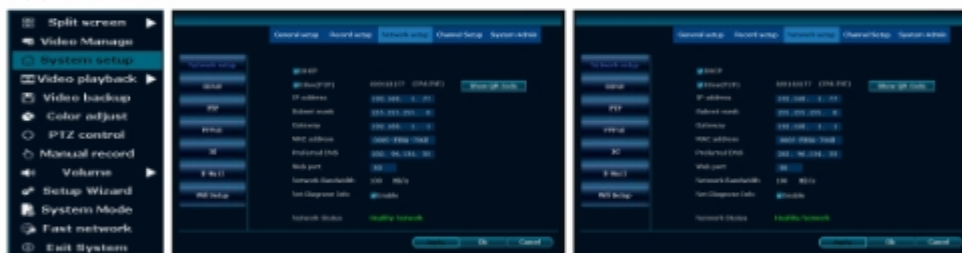


5 Generate Esee ID

Precindition to generate Esee ID is that make sure video recorder is connected with network, and IP address is available. Right click mouse in main menu —System setup—Network setup. If user is familiar with LAN, then no need to choose DHCP which help to get IP address automatically. Manually input IP address and DNS address, video recorder will generate ID by network, once generate, it will appear in menu.



If user not familiar with LAN, or video recorder is in independent network, can choose DHCP to get available IP address. After video recorder get IP address, it will generate Esee ID automatically. Manually input IP address and DNS address, video recorder will generate ID by network, once generate, it will appear in menu.



6 Access in LAN

Step 1: Right click mouse in main menu — System setup —Network setup —check video recorder IP address

Step 2: Access by computer in same LAN, input video recorder IP address and port(If port is 80, no need to input) in IE prowser or any other browser. Then it will access LAN log in webpage, input user name and password, click log in

Step 3: Once access successfully, can get video

Tips: Please make sure video recorder and computer in same network segment



7 Access in WAN

Step 1: Right click mouse in main menu — System setup — Network setup — check video recorder IP address

Step 2: Open the IE browser, enter the www.e-seenet.com in the address bar. Then it will access log in webpage, input ID, user name and password, click login

Step 3: Once access successfully, can get video

Tips: Video quality and fluency depend on video recorder side upload speed and computer side download speed, each channel need above 30KB



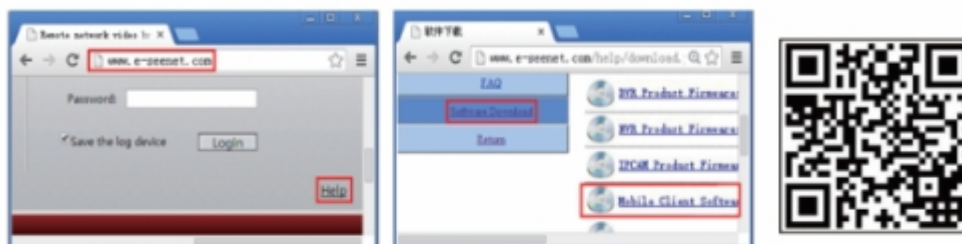
8 Android mobile application download and installation

No.1 : Right click mouse in main menu -> **Setup Wizard** -> **Show three QR code** ->

■ Android User scan QR code for android application by mobile directly, enter download page, click download to mobile to install.

No.2: Go to www.e-seenet.com/help/download.php in mobile browser, enter download page, click download to mobile

No.3: Go to www.e-seenet.com in computer, click help —► software download - find android mobile application, click download to save in computer, then copy to mobile to install



9 Iphone application download and installation

Step 1: Go to APP store

Step 2: Search IP-PRO

Step 3: Input APP ID password

Step 4: Click download



10 Esee mobile application (IP-PRO)-Add device

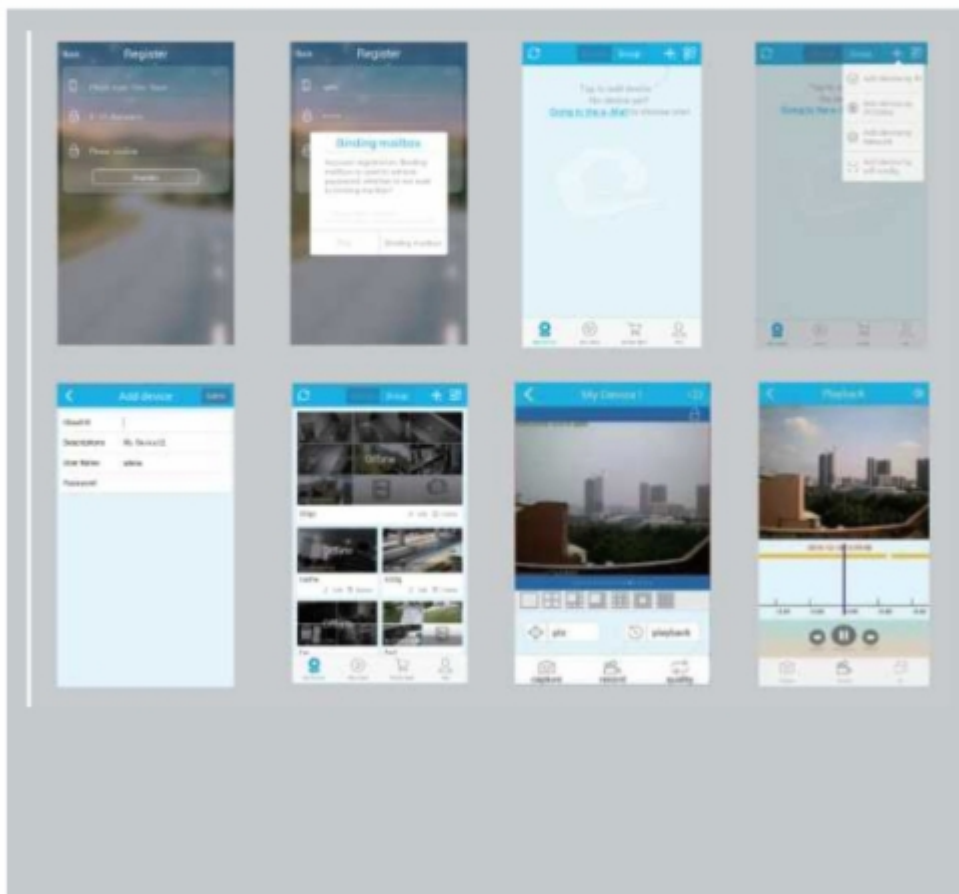
Step 1: Log in Eseenet application,Click "+"icon

Step 2: Enter device edit page

Step 3: Input video recorder login information

Step 4: Added successfully .it will show below page

Step 5: Click channel No.to get video



Packing list

S/N	Item	Quantity
1	NVR	1 pcs
2	Screw bag(4screws for HDD)	1 pcs
3	USB mouse	1 pcs
4	DC 12V3A power supply(for NVR)	1 pcs
5	NVR user manual, Installation Instructor	1 pcs
6	DC-BC130W IP Camera	2/4/8 pcs
7	DC 12V1A power supply (for IPC)	2/4/8 pcs
8	Screw bag (for IPC)	2/4/8 pcs

Notes:

1. Device will not in guarantee if caused by below reason:

A.Accident;negligence;disaster;mis-operation.

B. Do not conform to the environment and conditions,such as power improper, working temperature too high or too low, lightning stroke.ect.

C.Ever be maintained by other center which not belong to the real factory.

D.Goods already sold more than 12 months.



APP download
scan here



FCC Caution:

This device complies with part 15 of the FCC Rules. Operation is subject to the following two conditions: (1) This device may not cause harmful interference, and (2) this device must accept any interference received, including interference that may cause undesired operation.

Any Changes or modifications not expressly approved by the party responsible for compliance could void the user's authority to operate the equipment.

Note: This equipment has been tested and found to comply with the limits for a Class B digital device, pursuant to part 15 of the FCC Rules. These limits are designed to provide reasonable protection against harmful interference in a residential installation. This equipment generates uses and can radiate radio frequency energy and, if not installed and used in accordance with the instructions, may cause harmful interference to radio communications. However, there is no guarantee that interference will not occur in a particular installation. If this equipment does cause harmful interference to radio or television reception, which can be determined by turning the equipment off and on, the user is encouraged to try to correct the interference by one or more of the following measures:

- Reorient or relocate the receiving antenna.
- Increase the separation between the equipment and receiver.
- Connect the equipment into an outlet on a circuit different from that to which the receiver is connected.
- Consult the dealer or an experienced radio/TV technician for help.

This equipment complies with FCC radiation exposure limits set forth for an uncontrolled environment. This equipment should be installed and operated with minimum distance 20cm between the radiator & your body.